

DRAWING REGISTER

| DRAWING NUMBER | SHEET NAME | REV. No. | REV. DATE |
|--------------------|--|----------|-----------|
| 14507.5 >> DA L100 | key diagram | C | 24/3/23 |
| 14507.5 >> DA L101 | southern street landscape plan | A | 24/3/23 |
| 14507.5 >> DA L200 | childcare centre playground calculations | C | 24/3/23 |
| 14507.5 >> DA L201 | childcare centre playground plan | D | 27/3/23 |
| 14507.5 >> DA L202 | carpark landscape plan | D | 27/3/23 |
| 14507.5 >> DA L301 | precedents - playground | C | 24/3/23 |
| 14507.5 >> DA L302 | planting palette - playground | C | 24/3/23 |

landscape documentation

LOCHINVAR VILLAGE CHILDCARE CENTRE

GWH

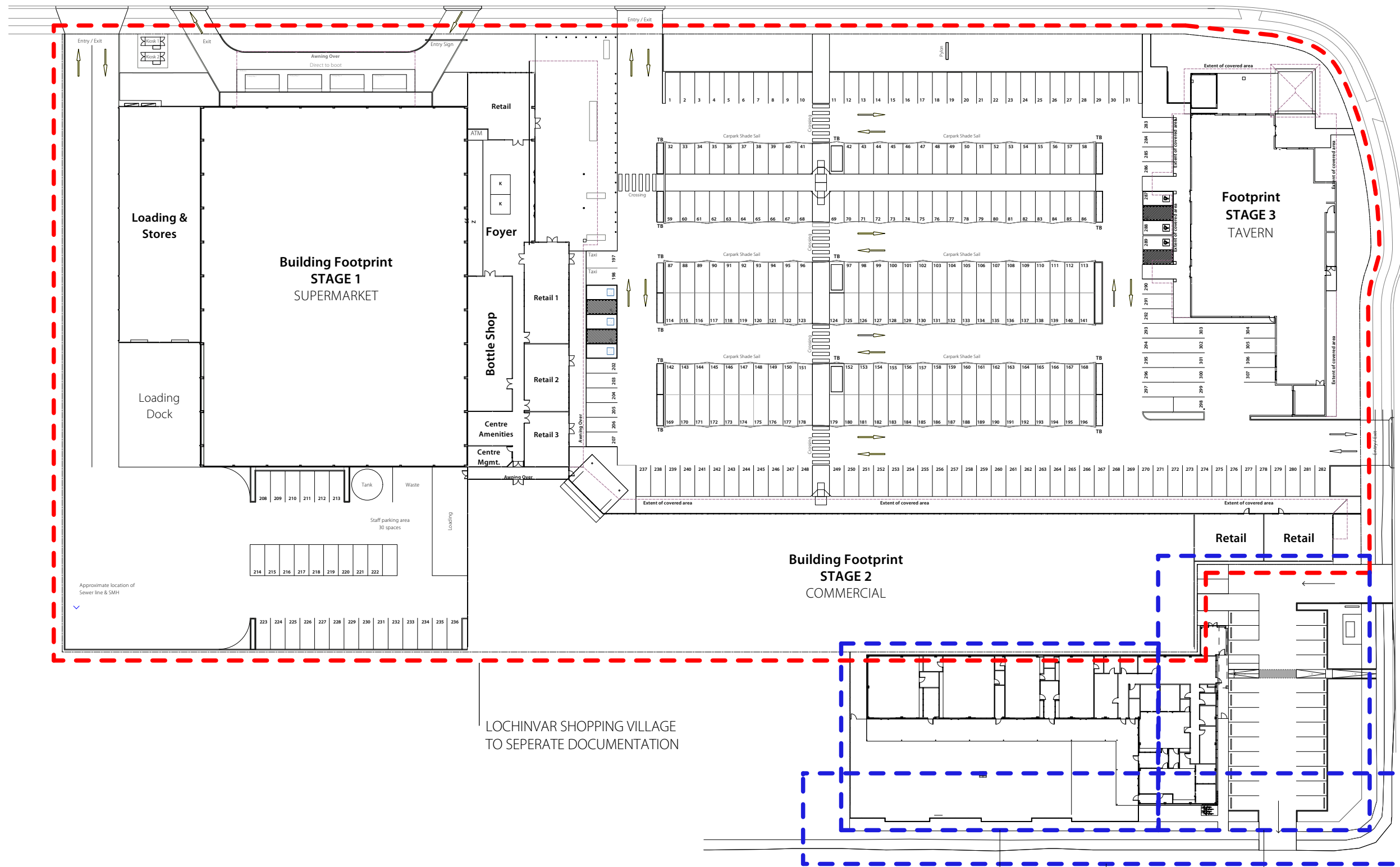
LOTS 307 & 308 & 309 & 310, LEYLAND CIRCUIT, LOCHINVAR NSW 2321



key diagram | L100

LOCHINVAR VILLAGE CHILDCARE CENTRE

Springfield Drive



Robert Road

C 24/3/23 DA ISSUE
REV DATE COMMENTS

PROJECT:
**LOCHINVAR VILLAGE
CHILDCARE CENTRE**

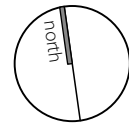
SITE:
**LOTS 307 & 308 & 309 & 310
LEYLAND CIRCUIT
LOCHINVAR NSW 2321**
CLIENT:
GWH

14507.5_Lochinvar Village_CCC_DA-REV D.vsw 27/3/23

DRAWN: AL / SR DATE: 31.11.22 SCALE: @A3

JOB NUMBER: 14507.5 DA L100 C PHASE: DWG No: REV:

- 3 L201 CHILDCARE CENTRE PLAYGROUND
- 1 L101 SOUTHERN STREET
- 2 L202 CARPARK LANDSCAPE PLAN



412 KING STREET NEWCASTLE NSW AUSTRALIA 2300
TERRAS.COM.AU PH: 49 294 926 FAX: 49 263 069

southern street landscape plan

L101

LOCHINVAR VILLAGE CHILDCARE CENTRE



Syzygium australe 'Resilience'



Syzygium australe 'Comapct'



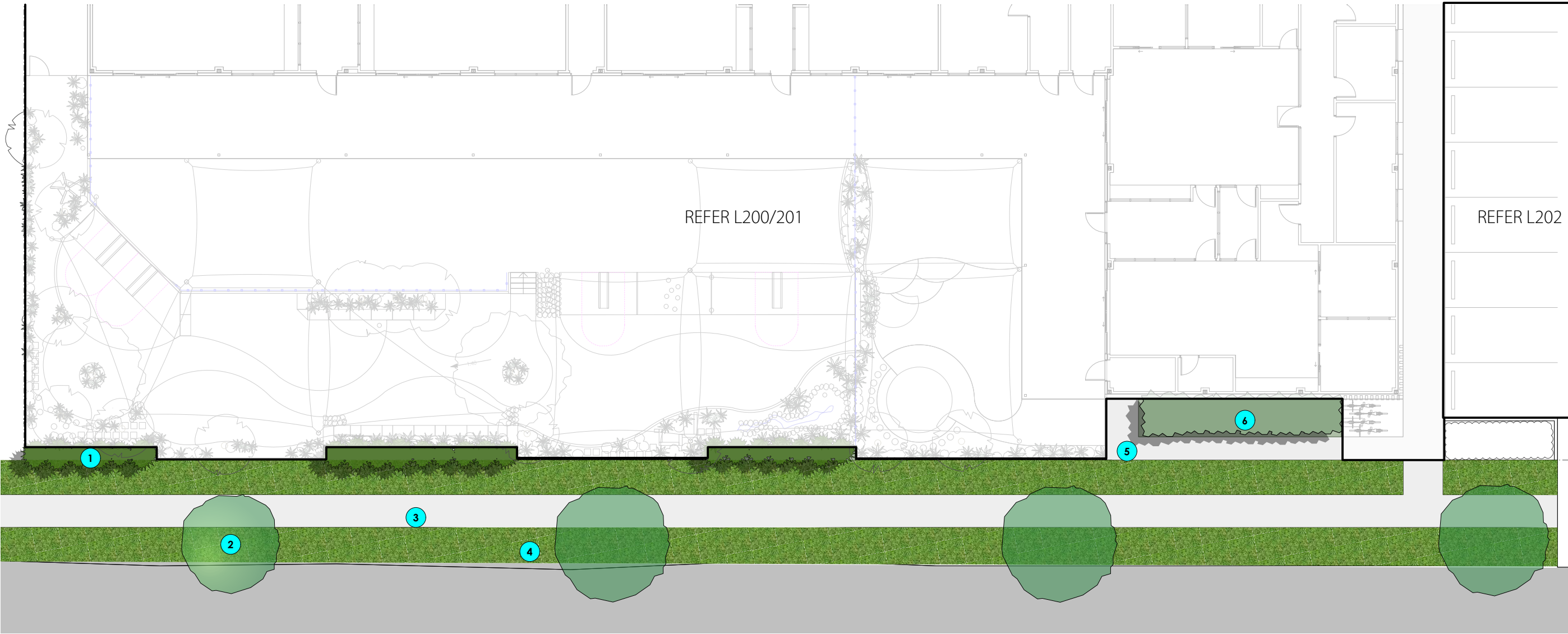
Waterhousea floribunda

Notes

1. Lilly pilly 'Straight and Narrow' as privacy hedging along boundary with timber edge
2. Weeping Lilly Pilly street trees as per Maitland City Council Preferred Species List
3. New footpath to engineers detail
4. Turf to street verge as per engineers detail
5. Maintenance / emergency egress path.
6. Low-medium shrubs (*Syzygium australe* 'Aussie Compact') to wall face to provide green contrast

Legend

- Lot boundary
- Mass planting
- Turf
- New footpath
- Edging
- Proposed trees



| | | |
|-----|---------|----------|
| A | 24/3/23 | DA ISSUE |
| REV | DATE | COMMENTS |

PROJECT:
**LOCHINVAR VILLAGE
CHILDCARE CENTRE**

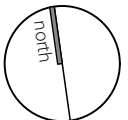
SITE:
**LOTS 307 & 308 & 309 & 310
LEYLAND CIRCUIT
LOCHINVAR NSW 2321**

CLIENT:
GWH

14507.5_Lochinvar Village_CCC_DA-REV D.vsw 27/3/23

DRAWN: AL / SR DATE: 31.11.22 SCALE: @A3

JOB NUMBER: 14507.5 DA L101 A PHASE: DWG No: REV:



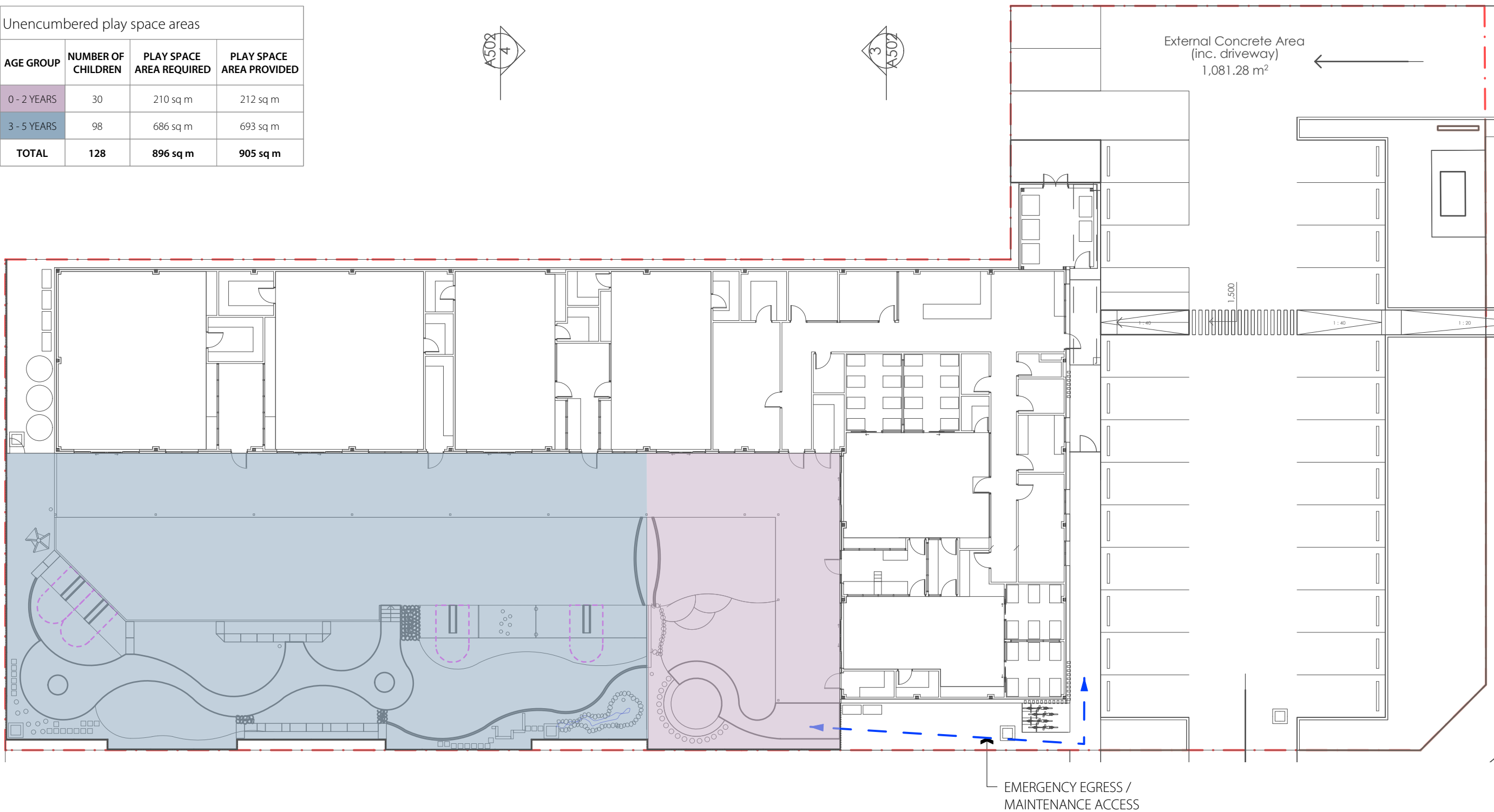
412 KING STREET NEWCASTLE NSW AUSTRALIA 2300
TERRAS.COM.AU PH: 49 294 926 FAX: 49 263 069

childcare centre playground calculations

L200

LOCHINVAR VILLAGE CHILDCARE CENTRE

| Unencumbered play space areas | | | |
|-------------------------------|--------------------|--------------------------|--------------------------|
| AGE GROUP | NUMBER OF CHILDREN | PLAY SPACE AREA REQUIRED | PLAY SPACE AREA PROVIDED |
| 0 - 2 YEARS | 30 | 210 sq m | 212 sq m |
| 3 - 5 YEARS | 98 | 686 sq m | 693 sq m |
| TOTAL | 128 | 896 sq m | 905 sq m |



C 24/3/23 DA ISSUE
REV DATE COMMENTS

PROJECT:
**LOCHINVAR VILLAGE
CHILDCARE CENTRE**

SITE:
**LOTS 307 & 308 & 309 & 310
LEYLAND CIRCUIT
LOCHINVAR NSW 2321**

CLIENT:
GWH

14507.5_Lochinvar Village_CCC_DA-REV D.vsw 27/3/23

DRAWN: AL / SR DATE: 31.11.22 SCALE: @A3

JOB NUMBER: 14507.5 DA L200 C PHASE: DWG No: REV:

childcare centre playground plan

LOCHINVAR VILLAGE CHILDCARE CENTRE

L201

Notes

- Gate to access services area.
- Explorative area with mulch, sensory planting and nature play elements.
- Security fence to boundary to engineers details.
- Concrete edge between mulch and rubber.
- Rubber mound with slides and climbing challenges.
- Sensory planting with winding explorative paths.
- Large feature shade tree to form roundabout for trike path.
- Stormwater pit with heel guard mesh lid.
- Open level artificial turf area for 3-5 free play equipment, with shade sail over.
- Raised sandstone wish planting.
- Sunken sandpit with shade sail over.
- Tap for water play and maintenance.
- Concrete circulation path.
- Sensory planting.
- Steps, retaining walls and fence to accommodate level change.
- Rock climbing wall to accommodate level change.
- Nature play elements with sensory planting, stepping stones and explorative paths.
- Stone lined creek bed with smooth pebbles for water play flowing from sandpit to mud play area.
- 1.2m palisade fence between play areas. Security gate with pool gate style lock for carer access.
- Open level artificial turf area for 0-2 free play equipment, with shade sail over.
- Rubber climbing forms with rounded edges to accommodate level change.
- Sunken sandpit with raised sandstone to back edge to retain sand.
- Veranda to Architectural documentation.
- Circulation path.
- Gate and path for maintenance access and emergency egress.
- Planting to street side of fence to provide privacy.

Legend

- Lot boundary
- Creek bed
- Concrete
- Turf
- Water play / creek
- Sandstone block
- Mulch
- Sandpit
- Concrete edge
- Rock edge
- Tap
- 1.2m palisade fence
- Shade sail
- Nature play elements
- Stepping elements
- Drainage pit to Eng.
- Proposed trees



D 27/3/23 CLIENT REVISIONS
REV DATE COMMENTS

PROJECT:
**LOCHINVAR VILLAGE
CHILDCARE CENTRE**

SITE:
**LOTS 307 & 308 & 309 & 310
LEYLAND CIRCUIT
LOCHINVAR NSW 2321**
CLIENT:
GWH

14507.5_Lochinvar Village_CCC_DA-REV D.vsw 27/3/23

DRAWN: AL / SR DATE: 31.11.22 SCALE: @A3

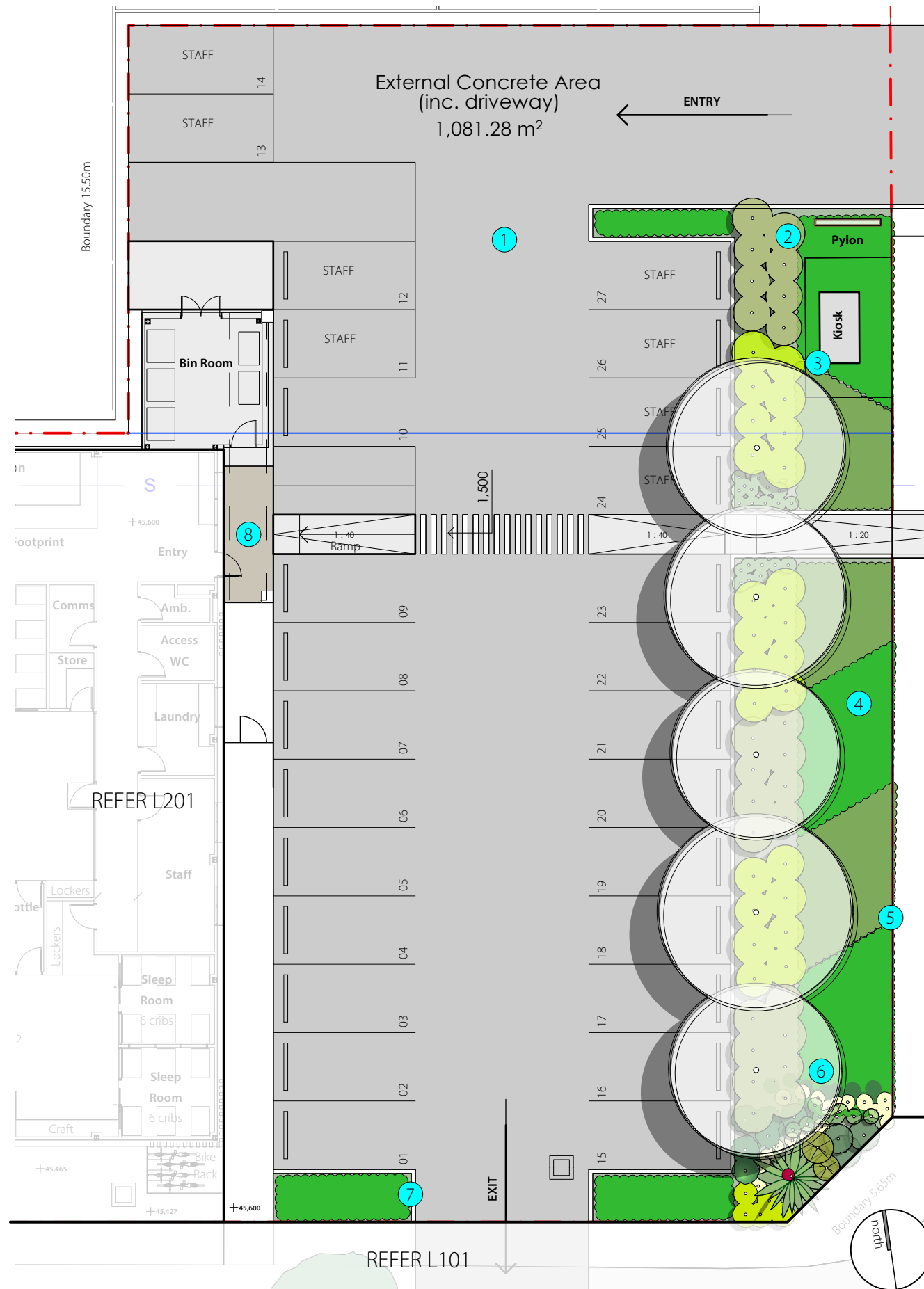
JOB NUMBER: PHASE: DWG No: REV:
14507.5 DA L201 D



412 KING STREET NEWCASTLE NSW AUSTRALIA 2300
TERRAS.COM.AU PH: 49 294 926 FAX: 49 263 069

carpark landscape plan | L202

LOCHINVAR VILLAGE CHILDCARE CENTRE



Notes

1. New carpark to engineers detail
2. Mass planting to surround pylon signage
3. Mass planting to screen kiosk. Ensure maintenance access is available
4. Informal mass planting to provide landscaped buffer to carpark edge and soften presentation to Robert Road streetfront
5. Timber edging to boundary interface to provide neat, formal edging to garden
6. Large trees (*Lophostemon confertus*) to provide shade
7. Low mass planting to carpark entry. Ensure sightlines are maintained
8. Concrete entry path with contrasting band section highlighting front door.

PLANT SCHEDULE - STREET AND CARPARK TREES

| ID | Botanical Name | Common Name | Pot Size |
|------|-------------------------------|---------------------|----------|
| LoCo | <i>Lophostemon confertus</i> | Brush Box | 75lt |
| WaFl | <i>Waterhousia floribunda</i> | Weeping Lilly Pilly | 75lt |

PLANT SCHEDULE - MASS PLANTINGS

| MP1 Plant in random groups of 3-7 at centres nominated | | | |
|--|--|--------------------------------------|----------|
| ID | Botanical Name | Common Name | Pot Size |
| AgIn | <i>Agapanthus 'Silver Lining'</i> | African Lily | 4.5lt |
| CvBJ | <i>Callistemon viminalis 'Better John'</i> | Botlebrush | 14lt |
| De | <i>Doryanthes excelsa</i> | Gymea Lily | 14lt |
| Dg | <i>Dietes grandiflora</i> | Large Wild Iris | 14lt |
| DiVe | <i>Dietes vegeta</i> | Morning Iris, White African Iris | 4.5lt |
| MyFa | <i>Myoporum parvifolium</i> | Carpet Spreading Myoporum | 4.5lt |
| Px | <i>Philodendron xanadu</i> | Xanadu | 14lt |
| MP3 Plant in random groups of 3-7 at centres nominated | | | |
| LcLC | <i>Lomandra confertifolia 'Little Con'</i> | Little Con | 4.5LT |
| LI | <i>Lomandra longifolia</i> | Spiny-headed Mat-Rush | 1.9lt |
| Lml | <i>Liriope muscari 'Isabella'</i> | Lilyturf | 1.9lt |
| LoHy | <i>Lomandra hystrix</i> | Green matrush | 4.5lt |
| WWG | <i>Westringia 'Wynabbie Gem'</i> | Coastal Rosemary | 14lt |
| MP4 Plant in random groups of 3-7 at centres nominated | | | |
| Ca | <i>Correa alba</i> | White Correa | 14lt |
| WfLH | <i>Westringia fruticosa 'Low Horizon'</i> | Coastal Rosemary, coastal westringia | 4.5lt |
| WM | <i>Westringia fruticosa 'Mundi'</i> | Coast Rosemary | 4.5lt |
| WfZ | <i>Westringia fruticosa 'Zena'</i> | Coastal Rosemary | 4.5lt |
| Southern Street Plants | | | |
| SaRSN | <i>Syzygium australe 'Straight and Narrow'</i> | Lilly Pilly 'Straight and Narrow' | 14lt |
| SyCo | <i>Syzygium australe 'Aussie Compact'</i> | Compact Lilly Pilly | 14lt |

Legend

- Lot boundary
- Mass planting
- New carpark
- Edging
- Proposed trees
- Pylon signage



Lophostemon confertus



Agapanthus inapertus 'Silver Lining'



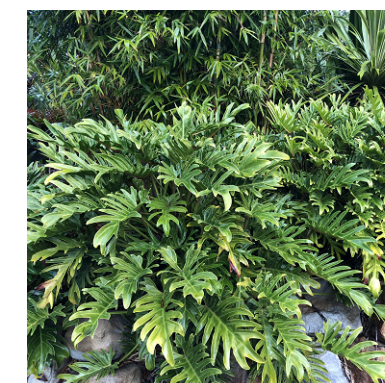
Callistemon viminalis 'Better John'



Westringia fruticosa 'Zena'



Myoporum parvifolium



Philodendron xanadu



Lomandra longifolia



Liriope muscari 'Isabella'



Doryanthes excelsa

D 27/3/23 CLIENT REVISIONS
REV DATE COMMENTS

PROJECT:
**LOCHINVAR VILLAGE
CHILDCARE CENTRE**

SITE:
**LOTS 307 & 308 & 309 & 310
LEYLAND CIRCUIT
LOCHINVAR NSW 2321**
CLIENT:
GWH

14507.5_Lochinvar Village_CCC_DA-REV D.vsw 27/3/23

DRAWN: AL / SR DATE: 31.11.22 SCALE: @A3

JOB NUMBER: 14507.5 DA L202 D PHASE: DWG No: REV:



412 KING STREET NEWCASTLE NSW AUSTRALIA 2300
TERRAS.COM.AU PH: 49 294 926 FAX: 49 263 069

precedents - playground | L301

LOCHINVAR VILLAGE CHILDCARE CENTRE

sandpits



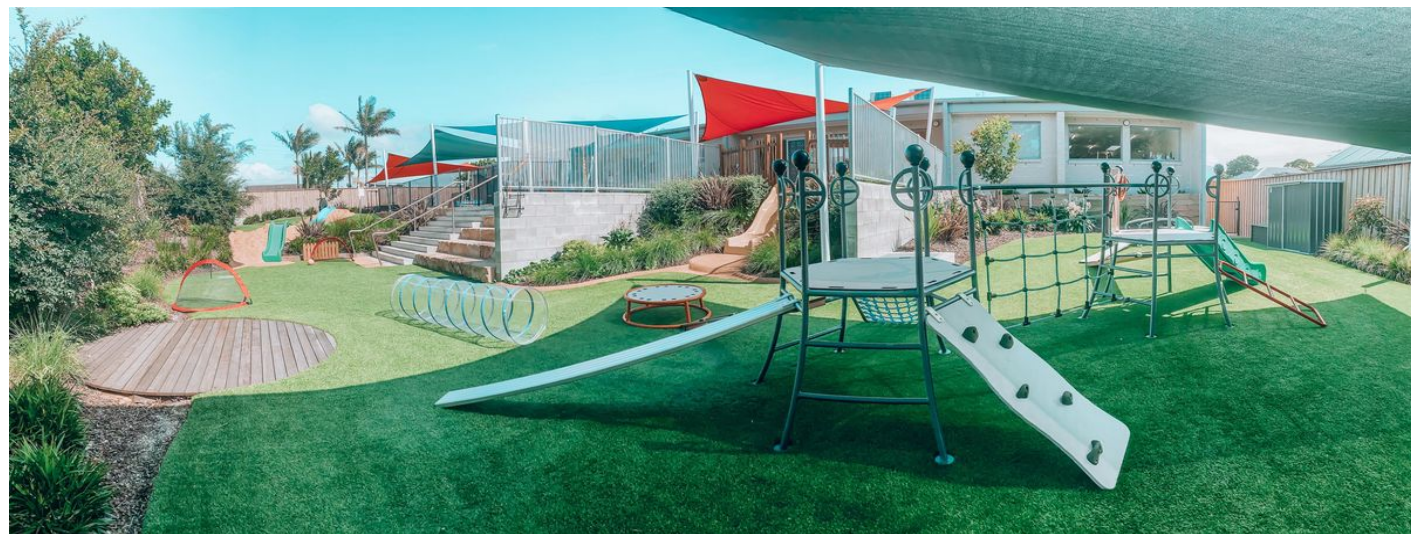
nature play



climbing mounds



open turf areas with shade sails



C 24/3/23 DA ISSUE
REV DATE COMMENTS

PROJECT:
**LOCHINVAR VILLAGE
CHILDCARE CENTRE**

SITE:
**LOTS 307 & 308 & 309 & 310
LEYLAND CIRCUIT
LOCHINVAR NSW 2321**
CLIENT:
GWH

14507.5_Lochinvar Village_CCC_DA-REV D.vsx 27/3/23

DRAWN: AL / SR DATE: 31.11.22 SCALE: @A3

JOB NUMBER: 14507.5 DA L301 C PHASE: DWG No: REV:

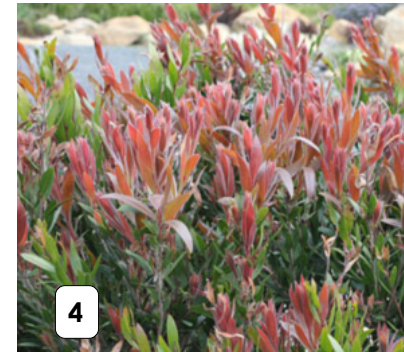
terras
landscape architects

412 KING STREET NEWCASTLE NSW AUSTRALIA 2300
TERRAS.COM.AU PH: 49 294 926 FAX: 49 263 069

planting palette - playground

LOCHINVAR VILLAGE CHILDCARE CENTRE

L302



C 24/3/23 DA ISSUE
REV DATE COMMENTS

PROJECT:
LOCHINVAR VILLAGE
CHILDCARE CENTRE

SITE:
LOTS 307 & 308 & 309 & 310
LEYLAND CIRCUIT
LOCHINVAR NSW 2321

CLIENT:
GWH

14507.5_Lochinvar Village_CCC_DA-REV D.wvx 27/3/23

DRAWN: AL / SR DATE: 31.11.22 SCALE: @A3

JOB NUMBER: 14507.5 DA L302 C PHASE: DWG No: REV:



412 KING STREET NEWCASTLE NSW AUSTRALIA 2300
TERRAS.COM.AU PH: 49 294 926 FAX: 49 263 069

Plant list - play space

1. *Tristaniopsis laurina*
2. *Banksia spinulosa* 'Birthday Candles'
3. *Hibbertia scandens*
4. *Callistemon viminalis* 'Red Alert'
5. *Rosmarinus officinalis*
6. *Stachys byzantina*
7. *Banksia integrifolia fastigiata* 'Sentinel'
8. *Ceratopetalum gummiferum*
9. *Westringia fruticosa*

- Water Gum
 Birthday Candles Banksia
 Snake Vine
 Callistemon Red Alert
 Rosemary
 Lamb's Ear
 Banksia 'Sentinel'
 New South Wales Christmas Bush
 Coastal Rosemary

10. *Grevillea lanigera* 'Mount Tamboritha'
11. *Acer palmatum*
12. *Pistacia chinensis*
13. *Pennisetum alopecuroides*
14. *Cordyline stricta*
15. *Trachelospermum jasminoides*
16. *Liriope muscari* 'Variegata'
17. *Dianella caerulea* 'Little Jess'
18. *Ajuga reptans purpurea*

- Grevillea
 Japanese Maple
 Chinese Pistacio
 Swamp Fox Tail
 Cordyline
 Star Jasmine
 Liriope
 Dianella
 Carpet Bugle

19. *Asplenium australasicum*
20. *Dietes iridoides*
21. *Pandorea jasminoides*
22. *Dicksonia antarctica*
23. *Gazania tomentosa*
24. *Melaleuca linariifolia*
25. *Lomandra longifolia* 'Variegated Tanika'

- Birds Nest Fern
 White Iris
 Bower Vine
 Tree Fern
 Silver Gazania
 Snow in Summer
 Variegated Tanika