

523 Raymond Terrace Road, Chisholm

LANDSCAPE ARCHITECTURE DOCUMENTATION
DEVELOPMENT APPLICATION



PROJECT OVERVIEW

ADW Johnson Landscape Architects has been engaged by ACG Clovelly to prepare Landscape Architecture documentation to support the Development Application for proposed subdivision, 523 Raymond Terrace Road, Chisolm. This document provides relevant layouts and details prepared in accordance with Maitland Council requirements.

The master plan identifies the landscape treatment for 108 lot and incorporates:

- Street Trees;
- Detention Basin;
- Riparian Corridor;
- Landscape Acoustic Buffer.

The concept for the landscape master plan considers the approved subdivision DA 19-574 at Thornton North located to the east. Landscape elements of this subdivision have been applied to 523 Raymond Terrace Road in order to maintain design consistency between both developments. This includes utilising same landscape treatments to

- Street Trees - Matching Street Trees To Key Roads;
- Riparian Corridor.

DOCUMENT CONTENTS

DRAWING NUMBER	TITLE NAME	DRAWING SIZE	SCALE
190837-DA-LA001	Cover Sheet	A3	As Shown
190837-DA-LA002	Project Overview	A3	As Shown
190837-DA-LA101	General Arrangement Plan	A3	As Shown
190837-DA-LA102	Part Site Plan 1	A3	As Shown
190837-DA-LA103	Part Site Plan 2	A3	As Shown
190837-DA-LA104	Part Site Plan 3	A3	As Shown
190837-DA-LA105	Riparian Corridor Plan	A3	As Shown
190837-DA-LA106	Landscape Buffer Plan	A3	As Shown
190837-DA-LA107	Detention Basin Plan	A3	As Shown
190837-DA-LA200	Street Section	A3	As Shown
190837-DA-LA300	Typical Details	A3	As Shown
190837-DA-LA400	Street Tree Imagery & Plant schedules	A3	NTS
190837-DA-LA401	Riparian Corridor Imagery & Plant schedules	A3	NTS
190837-DA-LA402	Landscape Buffer Imagery & Plant schedules	A3	NTS
190837-DA-LA403	Detention Basin Imagery & Plant schedules	A3	NTS





Legend

- - - Site Boundary
- Trees to be removed
- Trees to be retained
- **Street Trees**
Refer to dwg's:
190873 - DA-LA102
190873 - DA-LA103
190873 - DA-LA104
190873 - DA-LA104
190873 - DA-LA400
- Riparian Mass Planting**
Refer to dwg's:
190873 - DA-LA105
190873 - DA-LA401
- Detention Basin Shrub Planting**
Refer to dwg's:
190873 - DA-LA107
190873 - DA-LA403
- Buffer Planting**
Refer to dwg's:
190873 - DA-LA106
190873 - DA-LA402
- Turf verge**
190873 - DA-LA102
190873 - DA-LA103
190873 - DA-LA104
190873 - DA-LA104
190873 - DA-LA400

PLAN 1:12500 @A3



29 x Bac cit

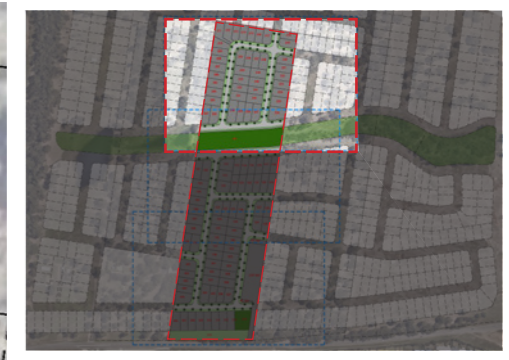
4 x Ela eum

4 x Bac cit

16 x Ela eum

18 x Wat flo

Riparian corridor
Refer to dwg 190873-DA - LA105

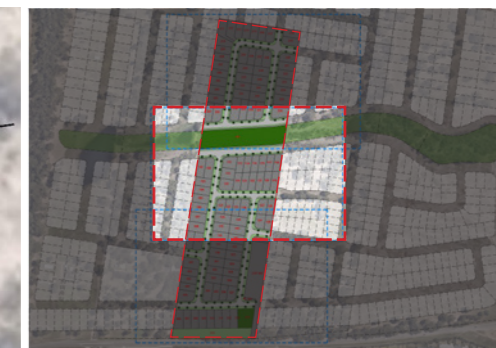


Location plan - NTS

Legend

- Site Boundary
- Trees to be removed
- Trees to be retained
- Street Trees**
Refer to dwg's 190873 - DA-LA 300
Refer to dwg's 190873 - DA-LA 400
- Bac cit - Backhousia citriodora
- Ela eum - Elaeocarpus eumundi
- Wat flo - Waterhousea floribunda
- Riparian Mass Planting
Refer to dwg's 190873 - DA-LA 105
- Turf verge
Refer to dwg's 190873 - DA-LA 109.

PLAN 1:1000 @A3

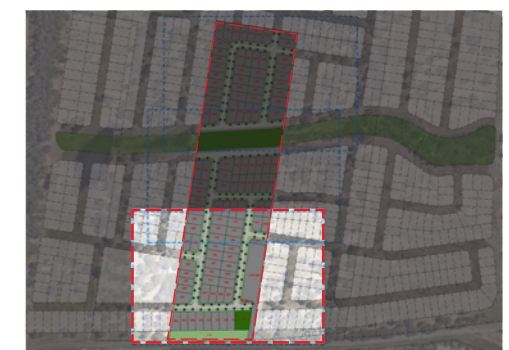


Location plan - NTS

Legend

-  Site Boundary
-  Trees to be removed
-  Trees to be retained
- Street Trees**
Refer to dwg's 190873 - DA-LA 300
Refer to dwg's 190873 - DA-LA 400
-  Bac cit - *Backhousia citriodora*
-  Ela eum - *Elaeocarpus eumundi*
-  Wat flo - *Waterhousea floribunda*
-  Tri lau - *Tristaniopsis laurina*
-  Mag lit - *Magnolia Little Gem*
-  Riparian Mass Planting
Refer to dwg's 190873 - DA-LA 105
-  Turf verge
Refer to dwg's 190873 - DA-LA 300.

PLAN 1:1000 @A3

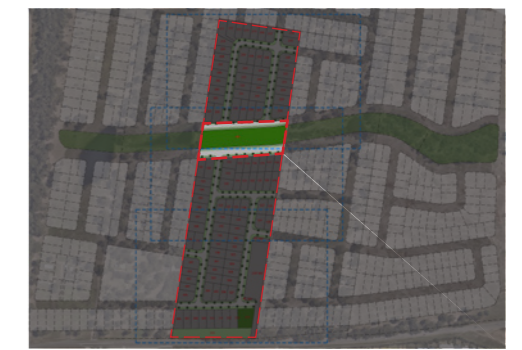
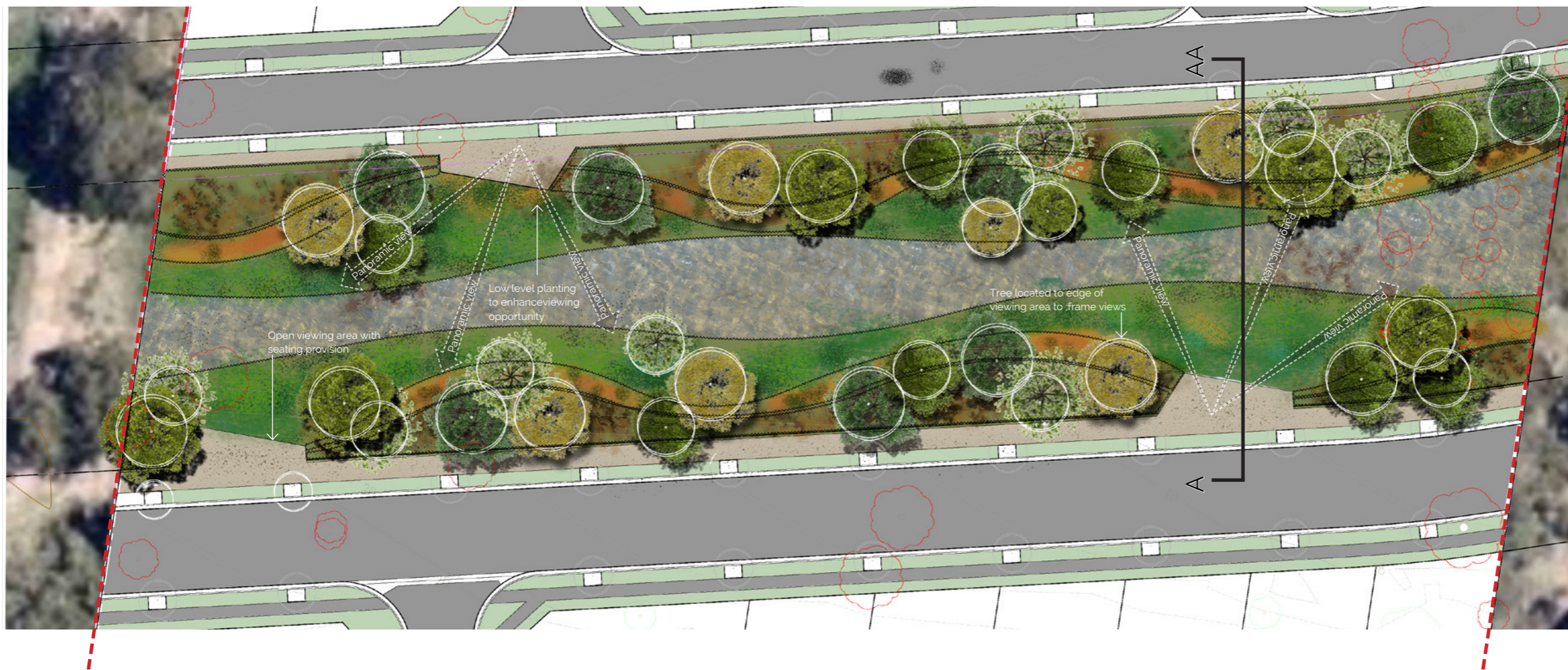


Location plan - NTS

- Legend**
- Site Boundary
 - Trees to be removed
 - Trees to be retained
 - Street Trees**
Refer to dwg's 190873 - DA-LA 300
Refer to dwg's 190873 - DA-LA 400
 - Tri lau - *Tristanopsis laurina*
 - Mag lit - *Magnolia Little Gem*
 - Ela eum - *Elaeocarpus eumundi*
 - Bac cit - *Backhousia citriodora*
 - Basin Shrub Planting
Refer to dwg's 190873 - DA-LA107
 - Buffer Planting
Refer to dwg's 190873 - DA-LA106
 - Turf verge
Refer to dwg's 190873 - DA-LA300





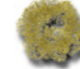






Detention Basin
Refer to dwg 190873-DA - LA1'07

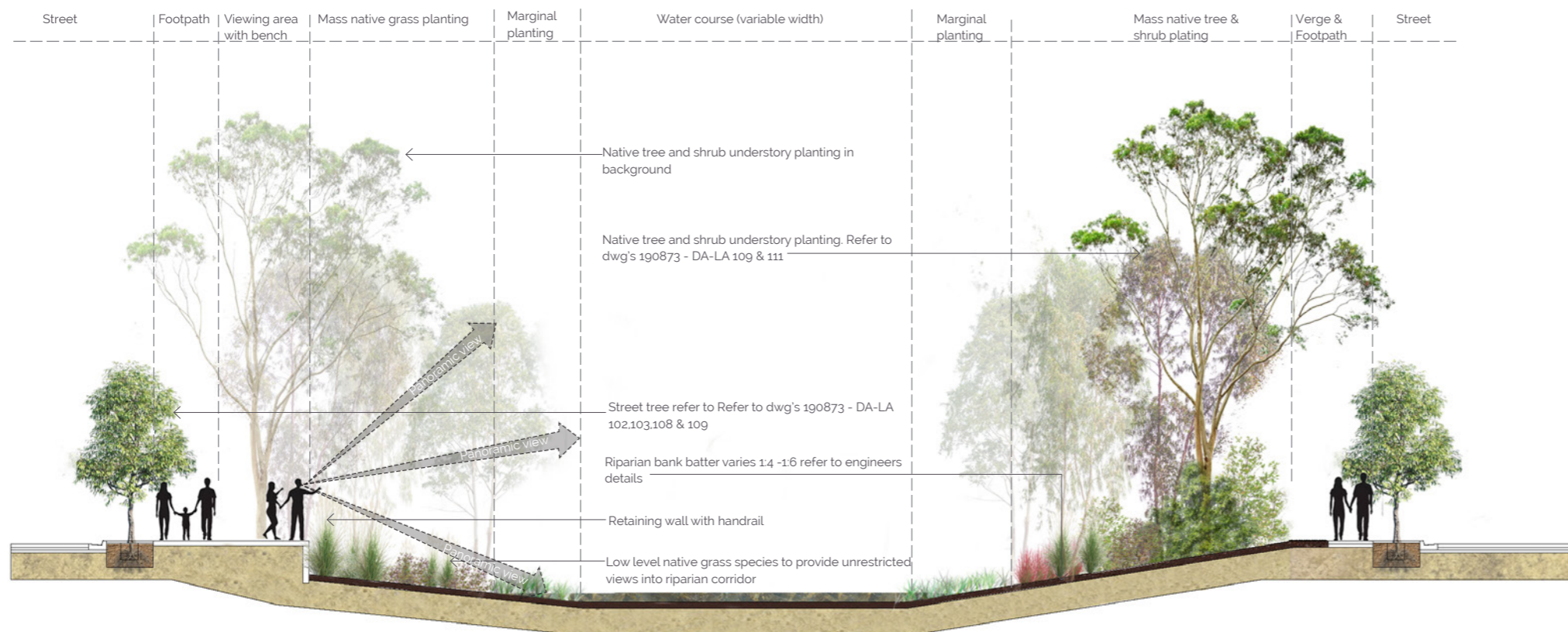
Buffer Planting
Refer to dwg 190873-DA - LA106

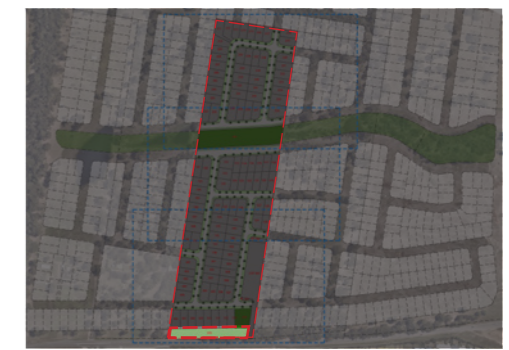
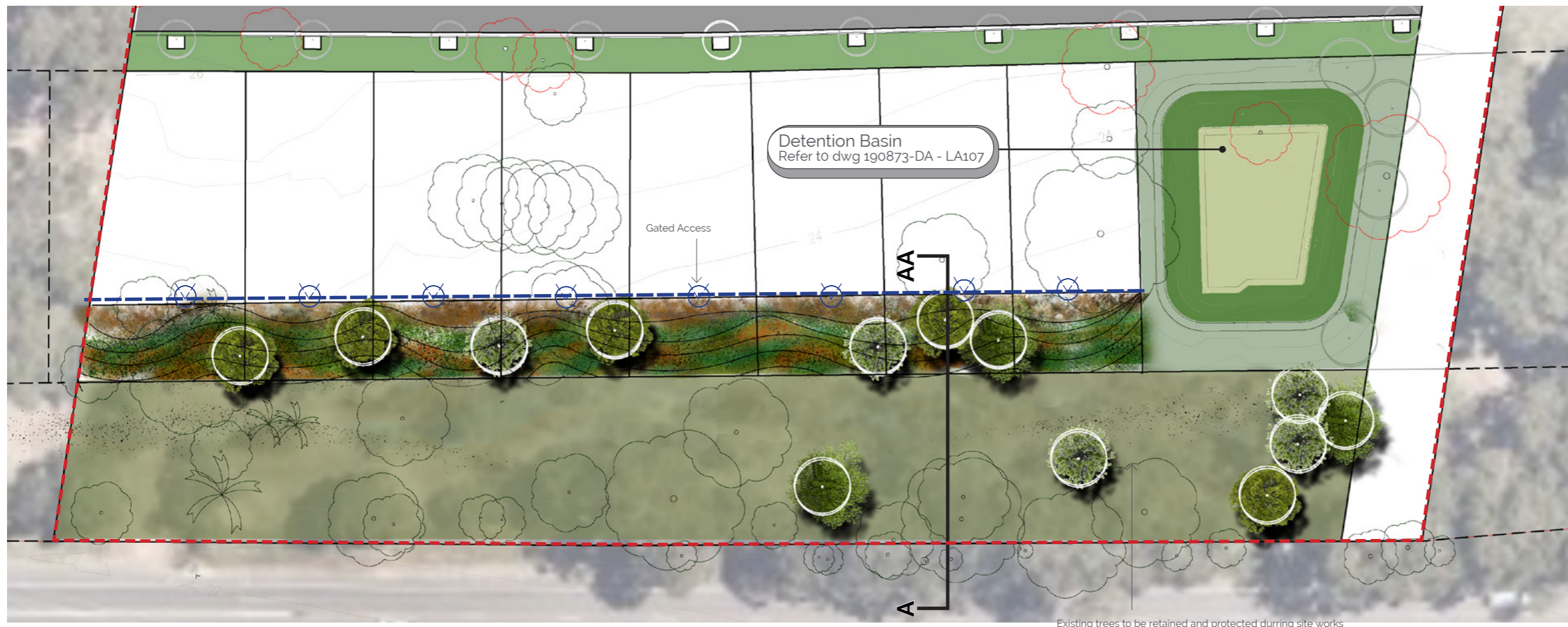


Location plan - NTS

Legend

-  Site Boundary
-  Trees to be removed
-  Trees to be retained
- Riparian Trees**
Refer to dwg's 190873 - DA-LA 401
-  Ang flo - *Angophora floribunda*
-  Euc ter - *Eucalyptus tereticornis*
-  Cal sal - *Callistemon salignus*
-  Euc pil - *Eucalyptus pilularis*
-  Mel lin - *Melaleuca linariifolia*
-  Riparian Mass Shrub Planting
Refer to dwg's 190873 - DA-LA 401.
-  Riparian Mass Grass Planting
Refer to dwg's 190873 - DA-LA 401
-  Riparian Mass Marginal Planting
Refer to dwg's 190873 - DA-LA 401

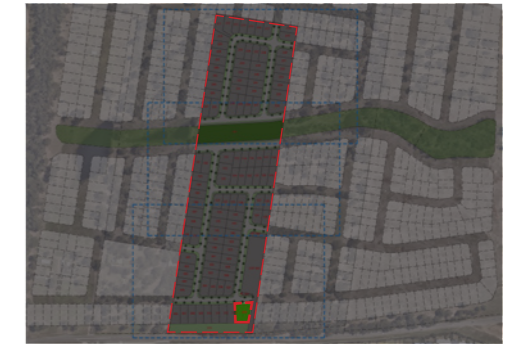
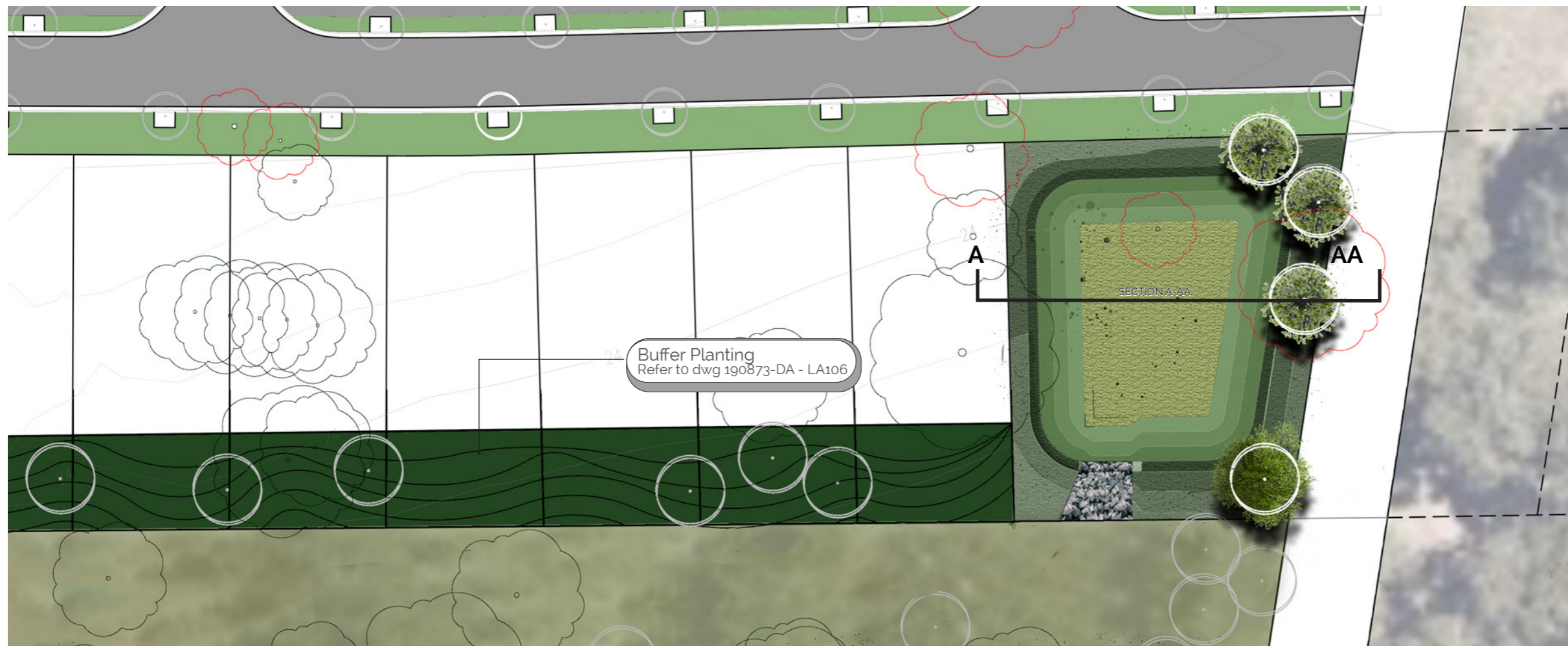










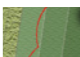
Location plan - NTS

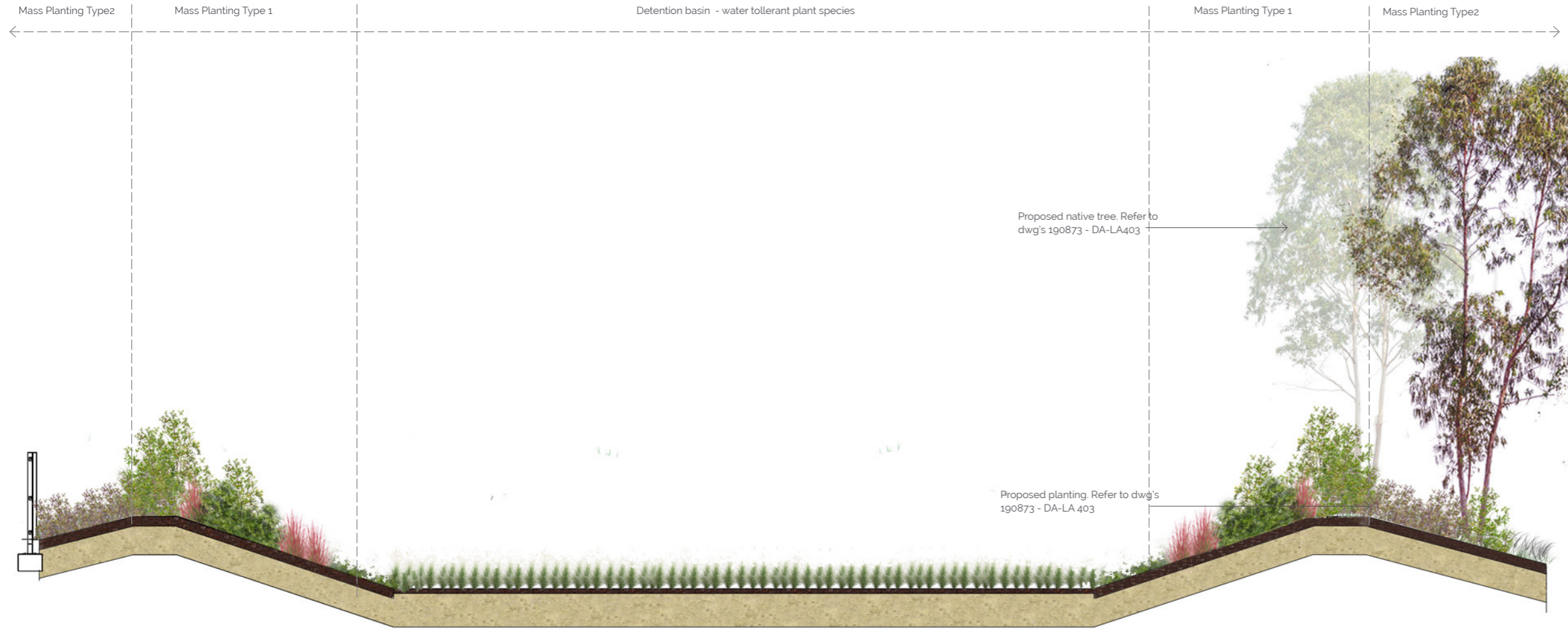
- Legend**
- Site Boundary
 - Trees to be removed
 - Trees to be retained
 - Buffer Trees**
Refer to dwg's 190873 - DA-LA 402
 - Cal sal - Callistemon salignus
 - Glo fer - Glochidion ferdinandi
 - Mel lin - Melaleuca linariifolia
 - Buffer Shrub Planting**
Refer to dwg's 190873 - DA-LA 402
 - Buffer Grass & Groundcover Planting**
Refer to dwg's 190873 - DA-LA 402

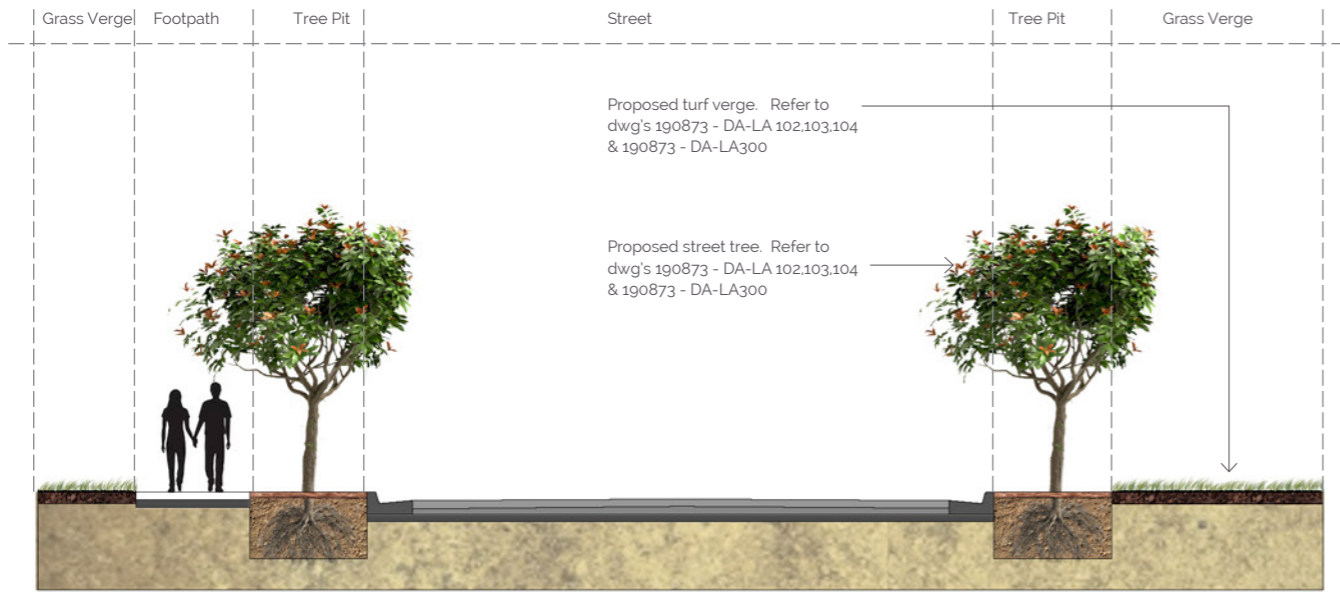




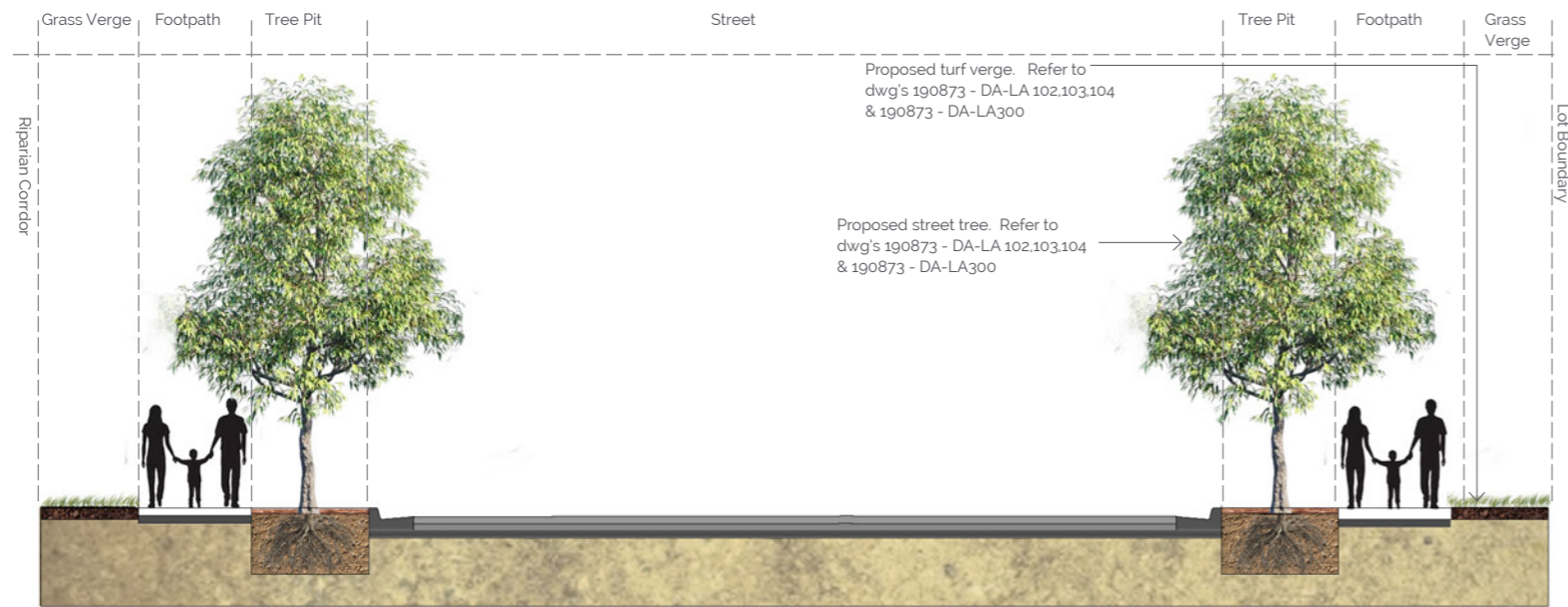
Location plan - NTS

-  Site Boundary
-  Trees to be removed
-  Trees to be retained
- Basin Trees**
Refer to dwg's 190873 - DA-LA 403
-  Cal sal - Callistemon salignus
-  Glo fer - Glochidion ferdinandi
-  Basin (base) Planting
Refer to dwg's 190873 - DA-LA 403
-  Basin (embankment) Planting
Refer to dwg's 190873 - DA-LA 403



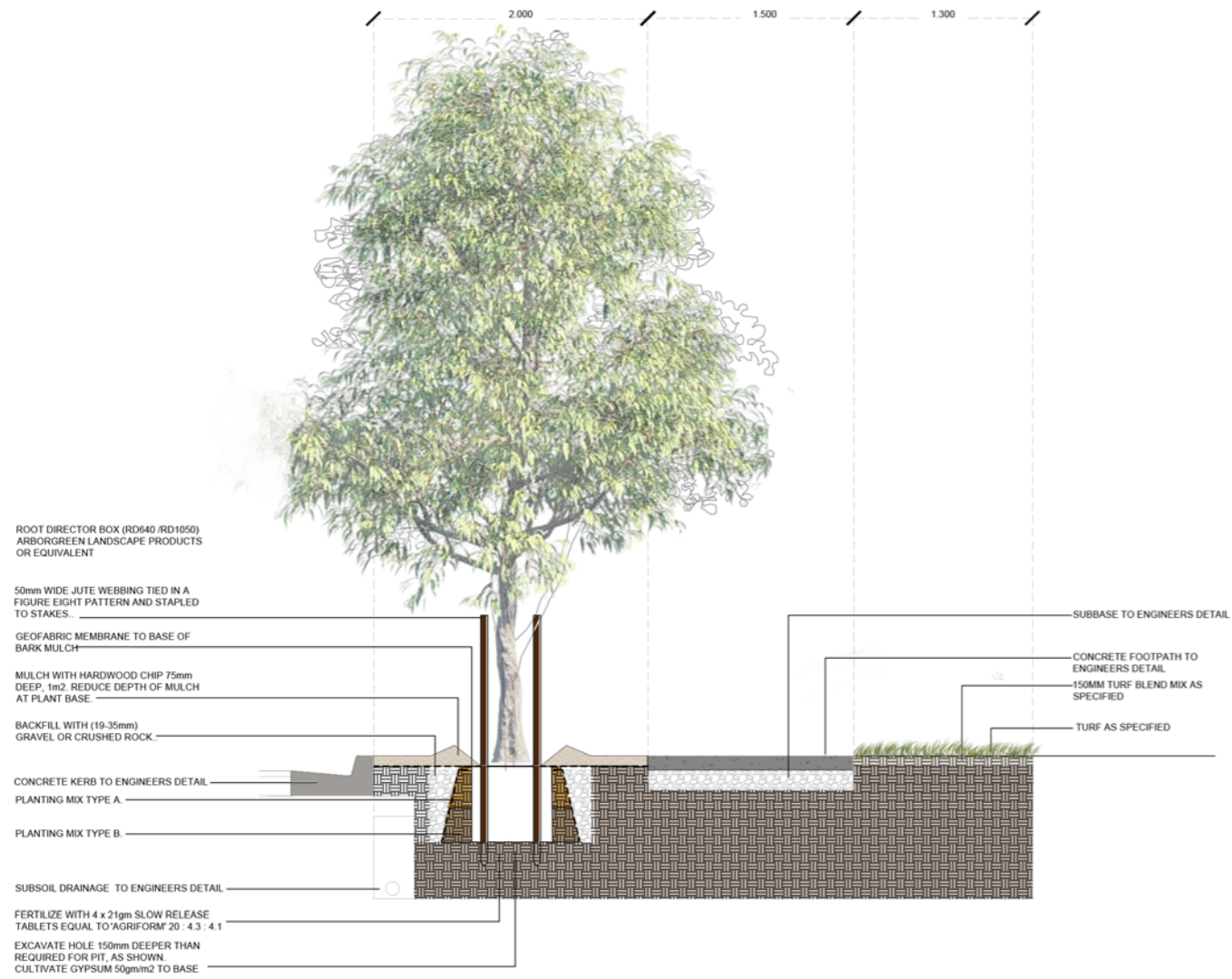


SECTION A-AA

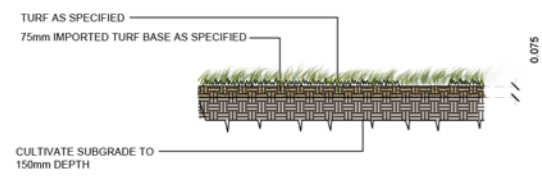


SECTION B-BB

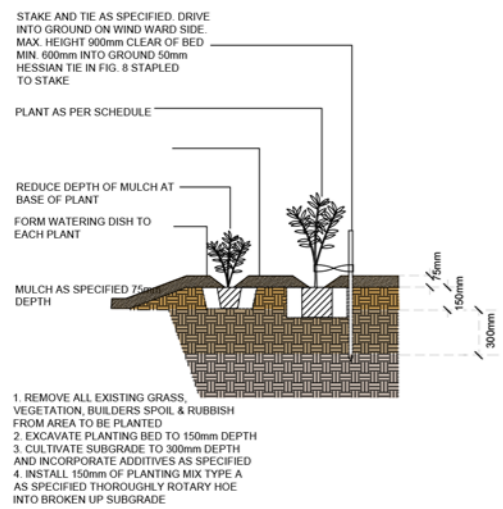




Street Tree Typical Detail



Turf Typical Detail



Mass Planting Typical Detail

Street Trees						
Code	Botanical Name	Common Name	Height(m)	Width(m)	Pot Size	Planting Density
Trees						
Bac cit	Backhousia citriodora	Weeping Bottlebrush	10	5	100ltr	Spec
Ela eum	Elaeocarpus eumundi	Eumundi	7	2	100ltr	Spec
Mag lit	Magnolia Little Gem	Dwarf Magnolia	5	3	100ltr	Spec
Tri lau	Tristaniopsis laurina	Water Gum	15	6	100ltr	Spec
Wat flo	Waterhousea floribunda	Weeping Lilly Pilly	10	5	100ltr	Spec

Street Trees



Tristaniopsis laurina



Elaeocarpus eumundi



Backhousia citriodora



Waterhousea floribunda



Magnolia Little Gem

Riparian Corridor						
Code	Botanical Name	Common Name	Height(m)	Width(m)	Pot Size	Planting Density
Trees						
Ang flo	Angophora floribunda	Rough Barked apple	20	10	75ltr	1 per 10m2
Euc ter	Eucalyptus tereticornis	Forest Red Gum	20	15	75ltr	1 per 10m2
Cal sal	Callistemon salignus	Weeping Bottlebrush	10	5	75ltr	1 per 8m2
Euc pil	Eucalyptus pilularis	Blackbutt	15	10	75ltr	1 per 10m2
Mel lin	Melaleuca linariifolia	Flax-leaved Paperbark	10	5	75ltr	1 per 8m2
Shrubs						
Bre obl	Breynia oblongifolia	Coffee Bush	3	2		1 per 3m2
Dav uli	Daviesia ulicifolia	Gorse bitter pea	2	2		1 per 6m2
Leu Jun	Leucopogon juniperinus	Prickley Beard heath	1	2		1 per 6m2
Jac sco	Jacksonia scoparia	Dogwood	4	2		1 per 6m2
Per lin	Persoonia linearis	Narrow-leaved Geebung	5	2		1 per 6m2
Grasses						
Cym ref	Cymbopogon refractus	Barbed wire grass	1	1		3 per m2
Gah cla	Gahnia clarkei	Tall Saw-sedge	2	1		3 per m2
Impcyl	Imperata cylindrica	Cogon Grass	1.2	1		3 per m2
Lom mul	Lomandra multiflora	Matt Rush	0.5	1		3 per m2
Mic sti	Microlaena stipoides	Burra weeping Grass	0.7	1		3 per m2
Shoreline						
Ele pat	Eleocharis palustris	Spike Rush	0.3	1		3 per m2
Jun usi	juncus usitatus	Common Rush	1.2	0.5		3 per m2
Pas dis	Paspalum distichum	Water couch	0.5	0.5		3 per m2

Riparian Trees



Angophora floribunda



Eucalyptus tereticornis



Callistemon salignus



Eucalyptus pilularis



Melaleuca linariifolia

Shrubs



Breynia oblongifolia



Daviesia ulicifolia



Leucopogon juniperinus



Jacksonia scoparia



Persoonia linearis

Grasses



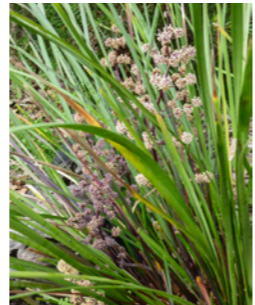
Cymbopogon refractus



Gahnia clarkei



Imperata cylindrica



Lomandra multiflora



Microlaena stipoides

Shoreline



Eleocharis palustris



Juncus usitatus



Paspalum distichum

Buffer Planting						
Code	Botanical Name	Common Name	Height(m)	Width(m)	Pot Size	Planting Density
Trees						
Cal sal	Callistemon salignus	Weeping Bottlebrush	10	5	75ltr	Spec
Glo fer	Glochidion ferdinandi	Cheese Tree	8	5	75ltr	Spec
Mel lin	Melaleuca linariifolia	Flax-leaved Paperbark	10	5	75ltr	Spec
Shrubs						
Bre obl	Breynia oblongifolia	Coffee Bush	3	2	3ltr	3 per m2
Dav uli	Daviesia ulicifolia	Gorse bitter pea	2	2		3 per m2
Leu Jun	Leucopogon juniperinus	Prickley Beard heath	1	2		3 per m2
Jac sco	Jacksonia scoparia	Dogwood	4	2		3 per m2
Grasses						
Impcyl	Imperata cylindrica	Cogon Grass	1.2	1		3 per m2
Lom mon	Lomandra confertifolia	Matt Rush	0.5	1		3 per m2
Lom fil	Lomandra filiformis	Wattle Mat Rush	0.5	1		3 per m2
Mic sti	Micolaena stipoides	Burra weeping Grass	0.7	1		3 per m2
Ground cover						
Dic rep	Dichondra repens	Kidney Weed	0.3	1		3 per m2
Opl aem	Oplismenus aemulus	Creeping beard grass	0.3	1		3 per m2

Buffer Tree Planting



Callistemon salignus



Glochidion ferdinandi



Melaleuca linariifolia

Buffer Shrub Planting



Breynia oblongifolia



Daviesia ulicifolia

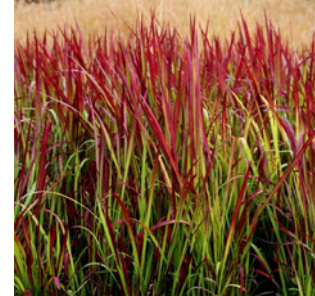


Leucopogon juniperinus



Jacksonia scoparia

Buffer Grass Planting



Imperata cylindrica



Lomandra confertifolia

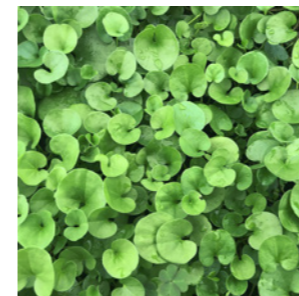


Lomandra filiformis



Micolaena stipoides

Buffer Ground Cover Planting



Dichondra repens



Oplismenus aemulus

Basin Mass Planting 1						
Code	Botanical Name	Common Name	Height(m)	Width(m)	Pot Size	Planting Density
Shrubs						
Mel qui	Melaleuca quinquenervia	Paper Bark Tea Tree	3	2	Viotube	1 per 2m2
Mel lin	Melaleuca linariifolia	Snow-in-summer	2	2	Viotube	1 per 2m2
Mel nod	Melaleuca nodosa	Prickly-leaved Paperbark	1	2	Viotube	1 per 2m2
Mel sie	Melaleuca sieberi	Sieberi Paperbark	4	2	Viotube	1 per 2m2
Aca lon	Acacia longifolia	Long-leaved Wattle	5	2	Viotube	1 per 2m2
Groundcovers						
Lob pur	Lobelia purpurascens	Whiteroot	1	1	Viotube	3 per m2
Gah cla	Gahnia clarkei	Tall Saw-sedge	2	1	Viotube	3 per m2
Pte esc	Pteridium esculentum	Bracken	1.2	1	Viotube	3 per m2
Adi aet	Adiantum aethiopicum	Maidenhair Fern	0.5	1	Viotube	3 per m2
Dia cae	Dianella caerulea	Blue Flax-lily	0.3	1	Viotube	4 per m2
Lom lon	Lomandra longifolia	Spiny-headed Mat-rush	1.2	0.5	Viotube	4 per m2

Basin						
Code	Botanical Name	Common Name	Height(m)	Width(m)	Pot Size	Planting Density
Shoreline						
Dan cae	Dianella caerulea	Blue Flax-lily	0.3	1	Viotube	4 per m2
Lom lon	Lomandra longifolia	Spiny-headed Mat-rush	1.2	0.5	Viotube	4 per m2
Jun usi	Juncus usitatus	Common Rush	0.5	0.5	Viotube	4 per m2

Basin Mass Planting 2						
Code	Botanical Name	Common Name	Height(m)	Width(m)	Pot Size	Planting Density
Trees						
Glo fer	Glochidion ferdinandi	Cheese Tree	8	5	75ltr	Spec
Cal sal	Callistemon salignus	Weeping Bottlebrush	10	5	75ltr	Spec
Shrubs						
Mel nod	Melaleuca nodosa	Prickly-leaved Paperbark	1	2	Viotube	1 per 2m2
Mel sie	Melaleuca sieberi	Sieberi Paperbark	4	2	Viotube	1 per 2m2
Aca lon	Acacia longifolia	Long-leaved Wattle	5	2	Viotube	1 per 2m2
Groundcovers						
Cym ref	Pratia purpurascens	Barbed wire grass	1	1	Viotube	4 per m2
Gah cla	Gahnia clarkei	Tall Saw-sedge	2	1	Viotube	4 per m2
Impcyl	Entolasia stricta	Wiry Panic	1.2	1	Viotube	4 per m2
Lom mul	Xanthorrhoea sp	Grass Gumtree	0.5	1	Viotube	4 per m2
Ele pal	Dianella caerulea	Blue Flax-lily	0.3	1	Viotube	4 per m2
Jun usi	Lepidosperma laterale	Variable Sword Sedge	1.2	0.5	Viotube	4 per m2

Basin Tree Planting



Callistemon salignus

Glochidion ferdinandi

Basin Shrub Planting



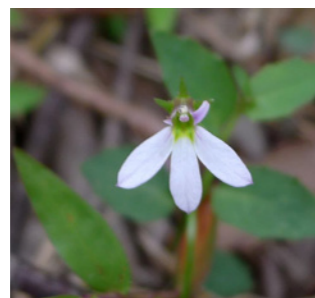
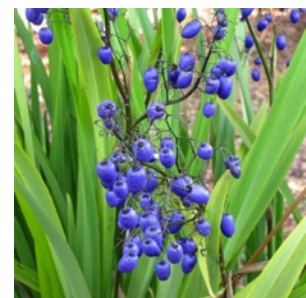
Melaleuca sieberi

Acacia longifolia

Melaleuca quinquenervia

Melaleuca linariifolia

Basin Ground Cover



Dianella caerulea

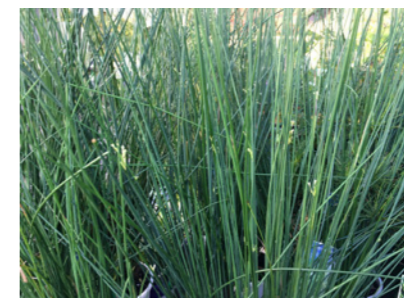
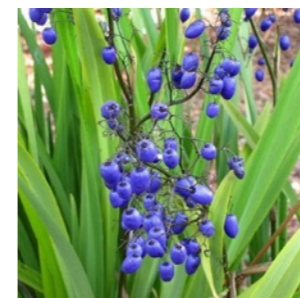
Lobelia purpurascens

Entolasia stricta

Xanthorrhoea sp

Pteridium esculentum

Basin (Water tollerant)



Dianella caerulea

Juncus usitatus

Lomandra longifolia