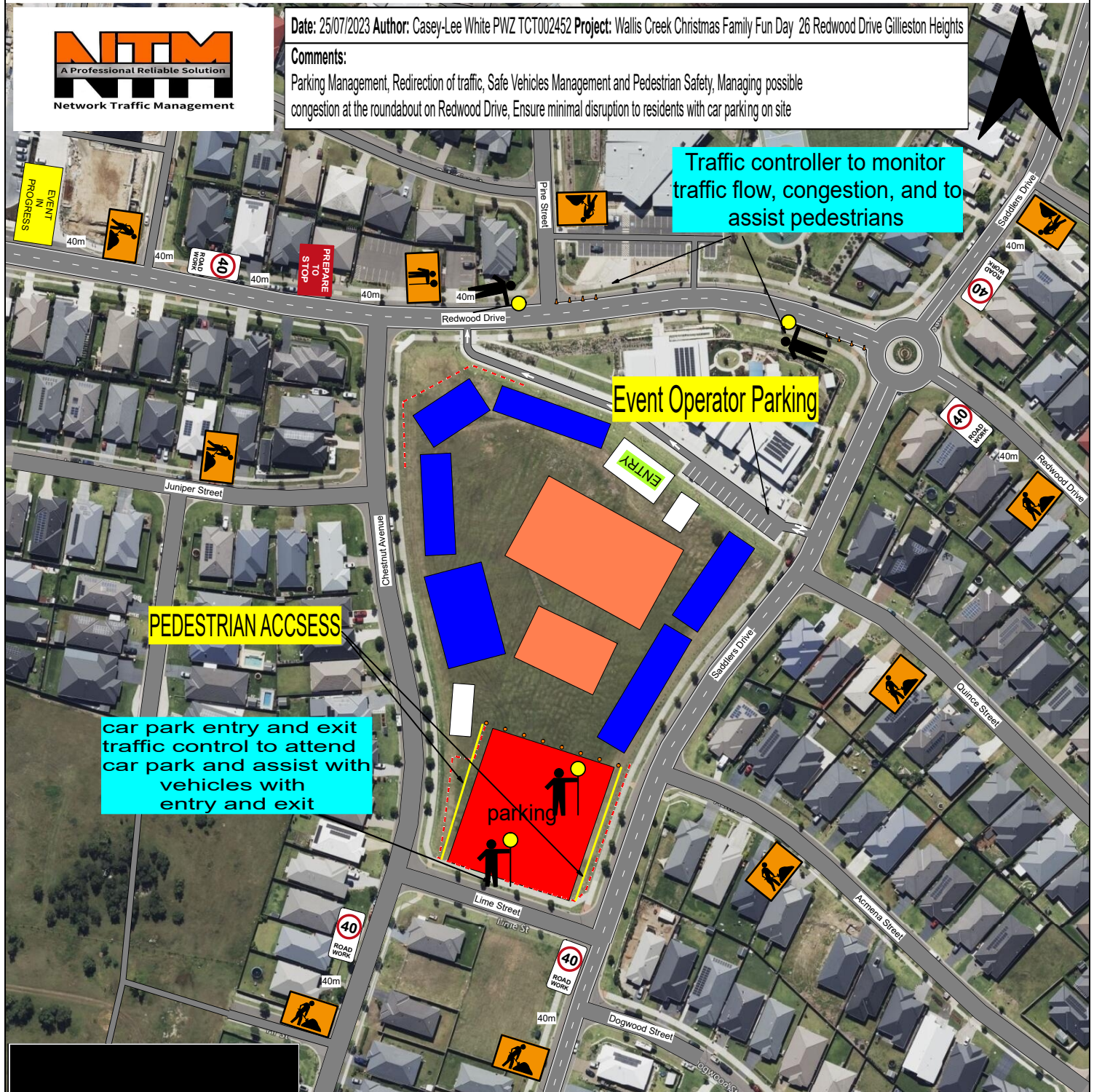




Date: 25/07/2023 Author: Casey-Lee White PWZ TCT002452 Project: Wallis Creek Christmas Family Fun Day 26 Redwood Drive Gillieston Heights

Comments:

Parking Management, Redirection of traffic, Safe Vehicles Management and Pedestrian Safety, Managing possible congestion at the roundabout on Redwood Drive, Ensure minimal disruption to residents with car parking on site



Traffic controller to monitor traffic flow, congestion, and to assist pedestrians

Event Operator Parking

PEDESTRIAN ACCESS

car park entry and exit traffic control to attend car park and assist with vehicles with entry and exit

parking

All Network Traffic management Plans comply with WHS Standards Road Rules Legislation and Australian control standards. TFNSW Traffic control at worksites version 6.1

TGS Assessed by: Jayden John Teague PWZ TCT0033714

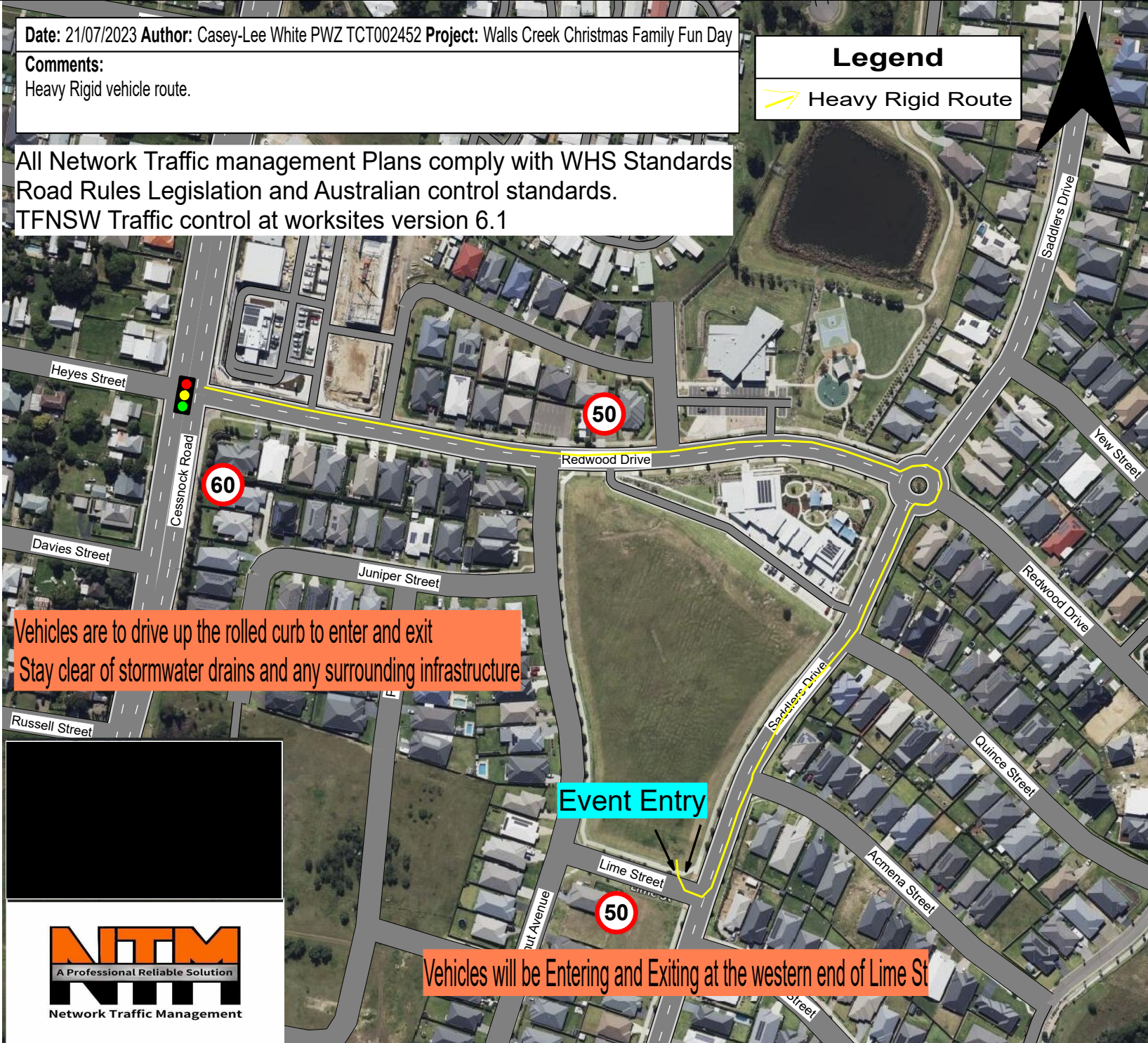
Date: 21/07/2023 Author: Casey-Lee White PWZ TCT002452 Project: Walls Creek Christmas Family Fun Day

Comments:
Heavy Rigid vehicle route.

Legend

 Heavy Rigid Route

All Network Traffic management Plans comply with WHS Standards
Road Rules Legislation and Australian control standards.
TFNSW Traffic control at worksites version 6.1



Vehicles are to drive up the rolled curb to enter and exit
Stay clear of stormwater drains and any surrounding infrastructure

Event Entry

Vehicles will be Entering and Exiting at the western end of Lime St

