



RUTHERFORD TECHNOLOGY
HIGH SCHOOL

SCOPE
OF
WORKS

WEBLANDS ST

AVERY ST

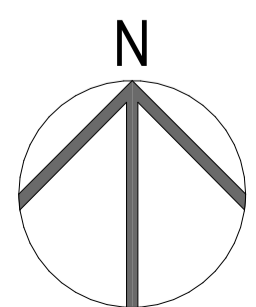
ALEXANDRA AVE

- A00 COVER SHEET
- A01 SITE ANALYSIS PLAN
- A02 EXISTING SITE PLAN
- A03 DEMOLITION PLAN
- A04 PROPOSED SITE PLAN
- A05 GROUND FLOOR PLAN STAGE 1
- A06 GROUND FLOOR PLAN STAGE 1 & 2
- A07 NORTH & EAST ELEVATIONS
- A08 SOUTH & WEST ELEVATIONS
- A09 SECTIONS
- A10 3D PERSPECTIVES STAGE 1
- A11 3D PERSPECTIVES STAGE 2
- A12 SCHEDULE OF MATERIALS
- A13 NOTIFICATION PLAN

MAX MCMAHON OVAL AMENITIES

RUTHERFORD OVAL, WEBLANDS ST,
RUTHERFORD, NSW 2320

DA ISSUE



ACN 002 912 843 | ABN 82 644 649 849
 Nominated Architect - Bernard Collins NSW Architects Registration No. 4438
 A 412 KING STREET NEWCASTLE NSW 2300 AUSTRALIA
 P +61 2 4929 2353 | F +61 2 4928 2300 | E mail@eje.com.au | W www.eje.com.au

COMPLETION OF THE QUALITY ASSURANCE CHECKS IS VERIFICATION THAT THE DOCUMENT
 CONFORMS WITH THE REQUIREMENTS OF THE QUALITY PROJECT PLAN, WHERE THE
 QUALITY ASSURANCE CHECK IS INCOMPLETE THIS DOCUMENT IS PRELIMINARY FOR
 INFORMATION PURPOSES ONLY, OR SUCH PURPOSES AS STATED IN THE REVISION COLUMN.
 THE IDEAS, INFORMATION AND CONCEPTS CONTAINED IN THIS DOCUMENT ARE THE
 PROPERTY OF EJE ARCHITECTURE. PHOTOCOPYING OR REPRODUCING THIS DOCUMENT AND
 PASSING IT ON TO OTHERS WITHOUT THE EXPRESS PERMISSION OF EJE ARCHITECTURE IS AN
 INFRINGEMENT OF COPYRIGHT. ©

FILE NAME: 14280_Max McMahon Oval Amenities_DA [2023]PBR [1]ESTIM817632283



EJE

ABBREVIATIONS

AC AIR CONDITIONING - REFER TO MECHANICAL DOCUMENTATION
 ACP ALUMINIUM COMPOSITE PANEL
 ACS SOLID SURFACE
 ADJ ADJUSTABLE SHELF
 AHD AUSTRALIAN HEIGHT DATUM
 AL ALUMINIUM LOUVRE
 ALB ALUMINIUM BATTEN
 ALS VERTICAL ALUMINIUM SCREEN
 AP ACCESS PANEL
 AR ARCHITRAVE
 AS AUSTRALIAN STANDARD
 BA BARGE BOARD
 BAL BALUSTRADE
 BC BABY CHANGE TABLE
 BOT BENCHTOP
 BF BI-FOLD DOOR
 BG BOX GUTTER

BH BULKHEAD
 BIN GARBAGE BIN
 BLK CONCRETE BLOCKWORK
 BRK BRICKWORK
 BSL BOLLARD
 BS BENCH SEAT
 BT BOTTLE TRAP
 BTH BATHTUB
 CWP CAPPING
 CB PREFINISHED STEEL
 CBG COLOUR-BACKED GLASS
 CFC COMPRESSED FIBRE CEMENT
 CH COAT HOOK
 CJ CONSTRUCTION / CONTROL JOINT
 CL CENTRE LINE
 CLD CLADDING
 CLS CLOTHESLINE

COL COLUMN - REFER TO STRUCTURAL DOCUMENTATION
 CONC CONCRETE
 COS CONFRIM ON SITE
 CPC COLORBOND PARAPET CAPPING
 CPD CUPBOARD
 CRT CARPET
 CR CEMENT RENDER
 CRN CORNICE
 CRT CURTAIN
 CRR CURTAIN RAIL
 CS CLEANERS SINK
 CVC COVERED SHIRTING
 CW COLD WATER
 DP DOWNPIPE - REFER TO HYDRAULIC DOCUMENTATION
 DR DOOR
 DS DOOR STOP
 EDB ELECTRICAL DISTRIBUTION BOARD - REFER TO ELECTRICAL DOCUMENTATION

EF EXHAUST FAN
 EG EAVES GUTTER - REFER TO HYDRAULIC DOCUMENTATION
 EJ EXPANSION JOINT
 ELP ELECTRICAL PLATE
 ENS ENSUITE
 EP EPOXY FLOORING
 EPS EXPANDED POLYSTYRENE CLADDING SYSTEM
 EQ EQUAL SPACING
 FB FACE BRICK
 FC FIBRE CEMENT SHEETING
 FE FIRE EXTINGUISHER
 FFL FINISHED FLOOR LEVEL
 FG FIXED GLASS
 FH FIRE HYDRANT - REFER TO HYDRAULIC DOCUMENTATION
 FHR FIRE HOSE REEL - REFER TO HYDRAULIC DOCUMENTATION

FI FIRE INDICATOR PANEL TO CONSULTANTS REQUIREMENTS
 FL FLASHING
 FLX VINYL FILM
 FR FIRE RESISTANCE
 FRP FIRE REPLACEMENT
 FS FIXED SHELF
 FT FLOOR TILES
 FW FLOOR WASTE
 G GLASS
 GA GREASE ARRESTOR
 GC GARBAGE CHUTE
 GD GRATED DRAIN
 GL GLASS LOUVRES
 GR GRASS RAIL
 GRD GARAGE DOOR
 GRV GRAVEL
 GP GRAVED PIT - REFER TO HYDRAULIC DOCUMENTATION

GT GUTTER TRANSOM
 GW GLASS WINDOW
 HA HOME AUTOMATION CLIPBOARD
 HB HAND BASIN
 HD HINGED DOOR
 HOR HAND DRIVER
 HP HIGH POINT
 HR HANDRAIL
 HRL HANGING RAIL
 HT HOSE TAP
 HTR HEATER
 HWS HOT WATER SYSTEM
 HYD HYDRAULIC
 J JOINERY
 KK KNOCK
 LB LINING BOARDS
 LD ACCESS LADDER

LDL DOWNLIGHT
 LDY LAUNDRY
 LK LOCKER SYSTEM
 LP LIGHT FITTING POCKET IN CONCRETE SLAB SOFFIT
 LPN PENDANT LIGHT
 LPL LIGHT POLE - REFER TO ELECTRICAL DOCUMENTATION
 LST LED STRIP LIGHT
 LTB LETTERBOX
 LVR LOUVRE
 LWL WALL LIGHT
 MC METAL CLADDING
 MDS MAIN DISTRIBUTION BOARD - REFER TO ELECTRICAL DOCUMENTATION
 MECH MECHANICAL
 MEL MELAMINE
 MI MIRROR
 MRS METAL ROOF SHEETING
 MW MATWELL

LEGEND

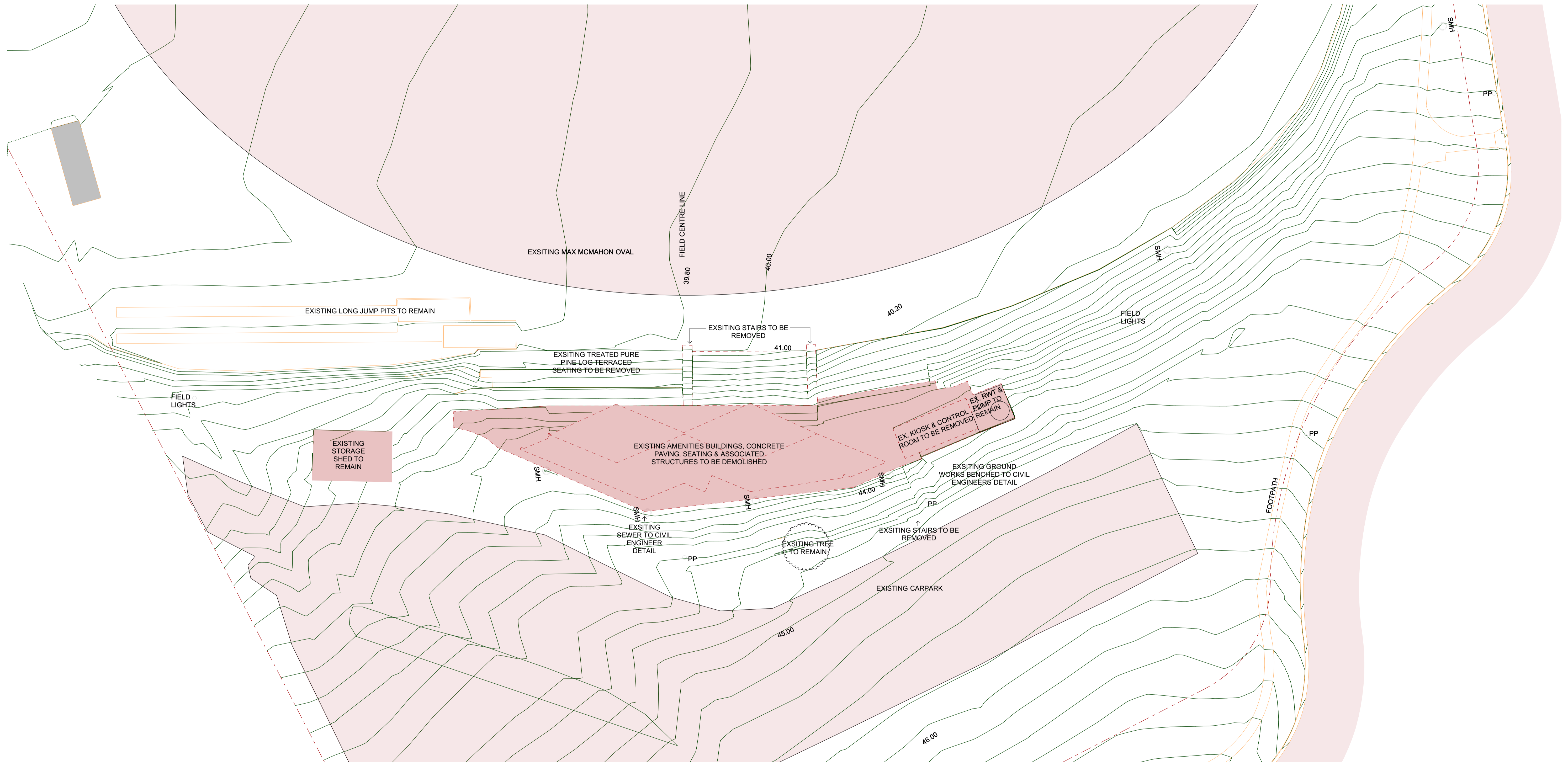
WT.05 WINDOW MARKER
 eg. WINDOW / LEVEL 1 / WINDOW N° 05

LT.05 LOUVRE MARKER
 eg. LOUVRE / LEVEL 1 / LOUVRE N° 05

DT.05 DOOR MARKER
 eg. DOOR / LEVEL 1 / DOOR N° 05

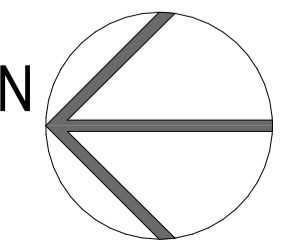
LINE MARKING

0.00 EXISTING RL
 0.00 PROPOSED RL



COMPLETION OF THE QA CHECKS IS VERIFICATION THAT THE DOCUMENT CONFORMS WITH THE REQUIREMENTS OF THE QUALITY PROJECT PLAN, WHERE THE QUALITY ASSURANCE CHECK IS INCOMPLETE THIS DOCUMENT IS PRELIMINARY FOR INFORMATION PURPOSES ONLY, OR SUCH PURPOSES AS STATED IN THE REVISION COLUMN. THE IDEAS, INFORMATION AND CONCEPTS CONTAINED IN THIS DOCUMENT ARE THE PROPERTY OF EJE. PHOTOCOPYING OR REPRODUCING THIS DOCUMENT AND PASSING IT ON TO OTHERS WITHOUT THE EXPRESS PERMISSION OF EJE IS AN INFRINGEMENT OF COPYRIGHT. WORK IN FIGURED DIMENSIONS IN PREFERENCE TO SCALE. CHECK DIMENSIONS AND LEVELS ON SITE PRIOR TO THE ORDERING OF MATERIALS OR THE COMPLETION OF WORKSHOP DRAWINGS. IF IN DOUBT ASK. REPORT ALL ERRORS AND OMISSIONS.

ACN 002 912 843 | ABN 82 644 649 849 Nominated Architect - Bernard Collins NSW Architects Registration No. 4438
 A 412 KING STREET, NEWCASTLE, NSW 2300 P +61 2 4926 3069 | E mail@eje.com.au | W www.eje.com.au



| REV | DATE | COMMENTS |
|-----|------------|-----------------------------|
| A | 17/08/2023 | CLIENT REVIEW |
| B | 24/08/2023 | ISSUE TO CONSULTANTS |
| C | 5/09/2023 | REVISE ISSUE TO CONSULTANTS |
| D | 13/09/2023 | ISSUE TO CONSULTANTS |
| E | 21/09/2023 | 50% DA ISSUE |
| F | 27/09/2023 | ISSUE FOR DA |

| DRN | CHKD | VRFD |
|-----|------|------|
| EWS | CIW | BH |
| EWS | CIW | BH |
| EWS | CIW | BH |
| EWS | CIW | BH |
| EWS | CIW | BH |
| EWS | CIW | BH |

PROJECT: MAX MCMAHON OVAL AMENITIES
 RUTHERFORD OVAL, WEBLANDS ST,
 RUTHERFORD, NSW 2320

DRAWING: DEMOLITION PLAN



DRAWN: EWS DATE: 27/09/2023 SCALES @A1: 1:250

FILENAME: 14280_Max McMahon Oval Amenities_DA [20230817] - STAGE 1 & 2.pln

PROJECT No: 14280 PHASE: DA DRAWING No: A03 REV: F



ABBREVIATIONS

AC AIR CONDITIONING - REFER TO MECHANICAL DOCUMENTATION
 ACP ALUMINIUM COMPOSITE PANEL
 ACS SOLID SURFACE
 ADJ ADJUSTABLE SHELF
 AHD AUSTRALIAN HEIGHT DATUM
 AL ALUMINIUM LOUVRE
 ALB ALUMINIUM BATTEN
 ALS VERTICAL ALUMINIUM SCREEN
 AP ACCESS PANEL
 AR ARCHITRAVE
 AS AUSTRALIAN STANDARD
 BA BARGE BOARD
 BAL BALUSTRADE
 BC BABY CHANGE TABLE
 BOT BENCHTOP
 BF BI-FOLD DOOR
 BG BOX GUTTER

BH BULKHEAD
 BIN GARBAGE BIN
 BK CONCRETE BLOCKWORK
 BRK BRICKWORK
 BOL BOLLARD
 BS BENCH SEAT
 BT BOTTLE TRAP
 BTH BATHTUB
 CAP CURTAIN
 CB PREFINISHED STEEL
 CBG COLOUR-BACKED GLASS
 CFC COMPRESSED FIRE CEMENT
 CH COAT HOOK
 CJ CONSTRUCTION / CONTROL JOINT
 CL CENTRE LINE
 CLD CLADDING
 CLS CLOTHESLINE

COL COLUMN - REFER TO STRUCTURAL DOCUMENTATION
 CONC CONCRETE
 COS CONFORM ON SITE
 CPC COLORBOND PARAPET CAPPING
 CPD CUPBOARD
 CRT CARPET
 CR CEMENT RENDER
 CRN CORNICE
 CRT CURTAIN
 CRR CURTAIN RAIL
 CS CLEANERS SINK
 CVC COVERED SHIRTING
 CW COLD WATER
 DP DOWNPIPE - REFER TO HYDRAULIC DOCUMENTATION
 DR DOOR
 DS DOOR STOP
 EDB ELECTRICAL DISTRIBUTION BOARD - REFER TO ELECTRICAL DOCUMENTATION

EF EXHAUST FAN
 EG EAVES GUTTER - REFER TO HYDRAULIC DOCUMENTATION
 EJ EXPANSION JOINT
 ELP ELECTRICAL PLATE
 ENS ENSUITE
 EP EPOXY FLOORING
 EPS EXPANDED POLYSTYRENE CLADDING SYSTEM
 EQ EQUAL SPACING
 FB FACE BRICK
 FC FIBRE CEMENT SHEETING
 FE FIRE EXTINGUISHER
 FFL FINISHED FLOOR LEVEL
 FG FIXED GLASS
 FH FIRE HYDRANT - REFER TO HYDRAULIC DOCUMENTATION
 FHR FIRE HOSE REEL - REFER TO HYDRAULIC DOCUMENTATION

FI FIRE INDICATOR PANEL TO CONSULTANTS REQUIREMENTS
 FL FLASHING
 FLM VINYL FILM
 FR FIRE RESISTANCE
 FRP FIREPLACE
 FS FIXED SHELF
 FT FLOOR TILES
 FW FLOOR WASTE
 G GLASS
 GA GREASE ARRESTOR
 GC GARBAGE CHUTE
 GD GRATED DRAIN
 GL GLASS LOUVRES
 GR GRASS RAIL
 GRD GARAGE DOOR
 GRV GRAVEL
 GP GRATED PIT - REFER TO HYDRAULIC DOCUMENTATION

GT GUTTER TRANSOM
 GW GLASS WINDOW
 HA HOME AUTOMATION CUPBOARD
 HB HAND BASIN
 HD HINGED DOOR
 HOR HAND DRIVER
 HP HIGH POINT
 HR HANDRAIL
 HRL HANGING RAIL
 HT HOSE TAP
 HTR HEATER
 HWS HOT WATER SYSTEM
 HYD HYDRAULIC
 J JOINERY
 KK KNOCK
 LB LINING BOARDS
 LD ACCESS LADDER

LDL DOWNLIGHT
 LDY LAUNDRY
 LK LOCKER SYSTEM
 LP LIGHT FITTING POCKET IN CONCRETE SLAB SOFFIT
 LPN PENDANT LIGHT
 LPL LIGHT POLE - REFER TO ELECTRICAL DOCUMENTATION
 LST LED STRIP LIGHT
 LTB LETTERBOX
 LVR LOUVRE
 LWL WALL LIGHT
 MC METAL CLADDING
 MDS MAIN DISTRIBUTION BOARD - REFER TO ELECTRICAL DOCUMENTATION
 MECH MECHANICAL
 MEL MELAMINE
 MI MIRROR
 MRS METAL ROOF SHEETING
 MW MATWELL

LEGEND

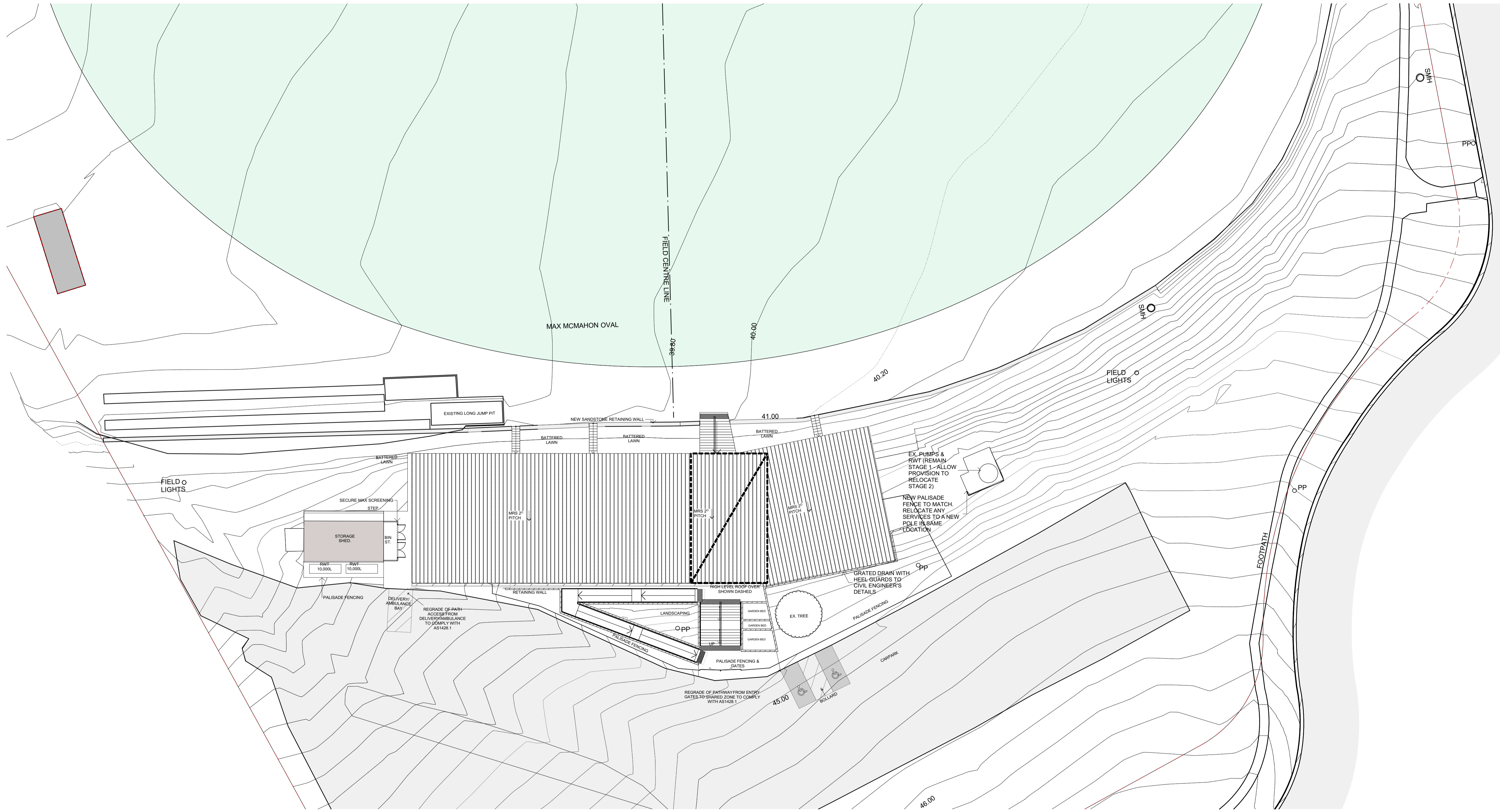
WT.05 WINDOW MARKER
 eg. WINDOW / LEVEL 1 / WINDOW N° 05

LT.05 LOUVRE MARKER
 eg. LOUVRE / LEVEL 1 / LOUVRE N° 05

DT.05 DOOR MARKER
 eg. DOOR / LEVEL 1 / DOOR N° 05

LINE MARKING

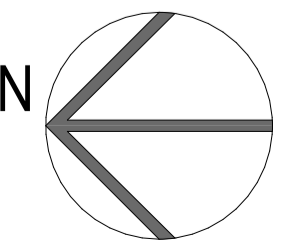
0.00 EXISTING RL
 0.00 PROPOSED RL



COMPLETION OF THE QA CHECKS IS VERIFICATION THAT THE DOCUMENT CONFORMS WITH THE REQUIREMENTS OF THE QUALITY PROJECT PLAN, WHERE THE QUALITY ASSURANCE CHECK IS INCOMPLETE THIS DOCUMENT IS PRELIMINARY FOR INFORMATION PURPOSES ONLY, OR SUCH PURPOSES AS STATED IN THE REVISION COLUMN. THE IDEAS, INFORMATION AND CONCEPTS CONTAINED IN THIS DOCUMENT ARE THE PROPERTY OF EJE. PHOTOCOPYING OR REPRODUCING THIS DOCUMENT AND PASSING IT ON TO OTHERS WITHOUT THE EXPRESS PERMISSION OF EJE IS AN INFRINGEMENT OF COPYRIGHT. ©

WORK IN FIGURED DIMENSIONS IN PREFERENCE TO SCALE. CHECK DIMENSIONS AND LEVELS ON SITE PRIOR TO THE ORDERING OF MATERIALS OR THE COMPLETION OF WORKSHOP DRAWINGS. IF IN DOUBT ASK. REPORT ALL ERRORS AND OMISSIONS.

ACN 002 912 843 | ABN 82 644 649 849 Nominated Architect - Bernard Collins NSW Architects Registration No. 4438
 A 412 KING STREET, NEWCASTLE, NSW 2300 P +61 2 4929 2353 | F +61 2 4926 3069 | E mail@eje.com.au | W www.eje.com.au



| REV | DATE | COMMENTS | DRN | CHKD | VRFD |
|-----|------------|-----------------------------|-----|------|------|
| A | 4/05/2023 | REVISED CONCEPT ISSUE | CB | BH | JBS |
| B | 17/08/2023 | CLIENT REVIEW | EWS | CIW | BH |
| C | 24/08/2023 | ISSUE TO CONSULTANTS | EWS | CIW | BH |
| D | 5/09/2023 | REVISE ISSUE TO CONSULTANTS | EWS | CIW | BH |
| E | 13/09/2023 | ISSUE TO CONSULTANTS | EWS | CIW | BH |
| F | 21/09/2023 | 50% DA ISSUE | EWS | CIW | BH |
| G | 27/09/2023 | ISSUE FOR DA | EWS | CIW | BH |

PROJECT: MAX MCMAHON OVAL AMENITIES
 RUTHERFORD OVAL, WEBLANDS ST, RUTHERFORD, NSW 2320

DRAWING: PROPOSED SITE PLAN



DRAWN: EWS DATE: 27/09/2023 SCALES @A1: 1:250

FILENAME: 14280_Max McMahon Oval Amenities_DA [20230817] - STAGE 1 & 2.pln

PROJECT No: 14280 PHASE: DA DRAWING No: A04 REV: G



ABBREVIATIONS

AC AIR CONDITIONING - REFER TO MECHANICAL DOCUMENTATION
 ACP ALUMINIUM COMPOSITE PANEL
 ACS SOLID SURFACE
 ADJ ADJUSTABLE SHELF
 AHD AUSTRALIAN HEIGHT DATUM
 AL ALUMINIUM LOUVER
 ALB ALUMINIUM BATTEN
 ALS VERTICAL ALUMINIUM SCREEN
 AP ACCESS PANEL
 AR ARCHITRAVE
 AS AUSTRALIAN STANDARD
 BA BARRE BOARD
 BAL BALUSTRADE
 BC BABY CHANGE TABLE
 BCT BENCHTOP
 BF BI-FOLD DOOR
 BG BOX GUTTER

BH BULKHEAD
 BIN GARBAGE BIN
 BK CONCRETE BLOCKWORK
 BRK BRICKWORK
 BOL BOLLARD
 BS BENCH SEAT
 BT BOTTLE TRAP
 BTH BATHTUB
 CAP CARPETING
 CB PREFINISHED STEEL
 CBG COLOUR-BACKED GLASS
 CPC COMPRESSED FIBRE CEMENT
 CH COAT HOOK
 CJ CONSTRUCTION / CONTROL JOINT
 CL CENTRE LINE
 CLD CLADDING
 CLS CLOTHESLINE

COL COLUMN - REFER TO STRUCTURAL DOCUMENTATION
 CONC CONCRETE
 COS CONFORM ON SITE
 CPC COLORBOND PARAPET CAPPING
 CPD CUPBOARD
 CRT CARPET
 CR CEMENT RENDER
 CRN CORNICE
 CRT CURTAIN
 CRR CURTAIN RAIL
 CS CLEANERS SINK
 CSD COVERED SHIRTING
 CW COLD WATER
 DP DOWNPIPE - REFER TO HYDRAULIC DOCUMENTATION
 DR DOOR
 DS DOOR STOP
 EDB ELECTRICAL DISTRIBUTION BOARD - REFER TO ELECTRICAL DOCUMENTATION

EF EXHAUST FAN
 EG EAVES GUTTER - REFER TO HYDRAULIC DOCUMENTATION
 EJ EXPANSION JOINT
 ELP ELECTRICAL PLATE
 ENS ENSUITE
 EP EPOXY FLOORING
 EPS EXPANDED POLYSTYRENE CLADDING SYSTEM
 EQ EQUAL SPACING
 FB FACE BRICK
 FC FIBRE CEMENT SHEETING
 FE FIRE EXTINGUISHER
 FFL FINISHED FLOOR LEVEL
 FG FIXED GLASS
 FH FIRE HYDRANT - REFER TO HYDRAULIC DOCUMENTATION
 FHR FIRE HOSE REEL - REFER TO HYDRAULIC DOCUMENTATION

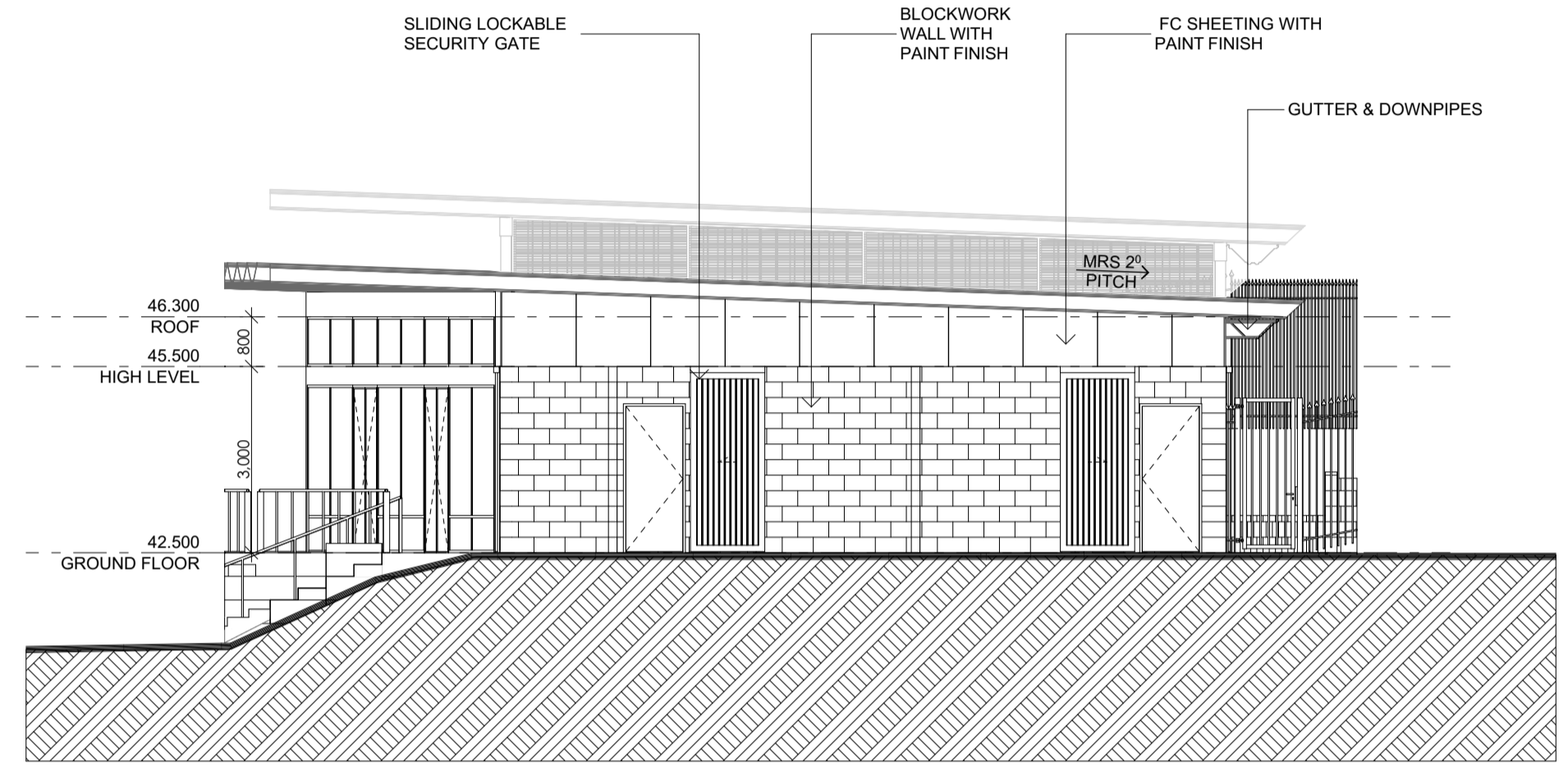
FI FIRE INDICATOR PANEL TO CONSULTANTS REQUIREMENTS
 FL FLASHING
 FLM VINYL FILM
 FR FIRE RESISTANCE
 FRP FIREPLACE
 FS FIXED SHELF
 FT FLOOR TILES
 FW FLOOR WASTE
 G GLASS
 GA GREASE ARRESTOR
 GC GARBAGE CHUTE
 GD GRATED DRAIN
 GL GLASS LOUVRES
 GR GARAGE RAIL
 GRD GARAGE DOOR
 GRV GRAVEL
 GP GRATED PIT - REFER TO HYDRAULIC DOCUMENTATION

GT GUTTER TRANSOM
 GW GLASS WINDOW
 HA HOME AUTOMATION CLIPBOARD
 HB HAND BASIN
 HD HINGED DOOR
 HDR HAND DRYER
 HP HIGH POINT
 HR HANDRAIL
 HRL HANDING RAIL
 HT HOSE TAP
 HTR HEATER
 HWS HOT WATER SYSTEM
 HYD HYDRAULIC
 J JOINERY
 KK KICK
 LB LINING BOARDS
 LD ACCESS LADDER

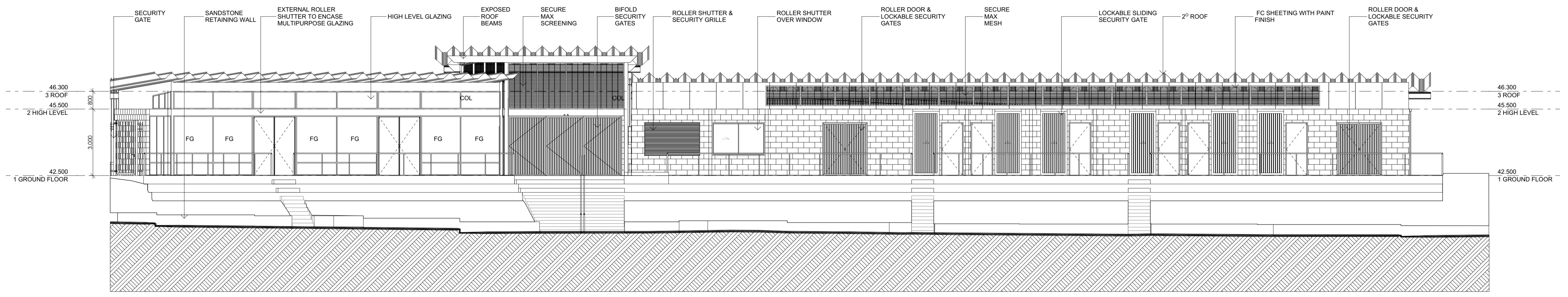
LDL DOWNLIGHT
 LDY LAUNDRY
 LK LOCKER SYSTEM
 LP LIGHT FITTING POCKET IN CONCRETE SLAB SOFFIT
 LPN PENDANT LIGHT
 LPL LIGHT POLE - REFER TO ELECTRICAL DOCUMENTATION
 LST LED STRIP LIGHT
 LTB LETTERBOX
 LVR LOUVRE
 LWL WALL LIGHT
 LYR LOCKER SYSTEM
 LPL LIGHT POLE - REFER TO ELECTRICAL DOCUMENTATION
 LST LED STRIP LIGHT
 LTB LETTERBOX
 LVR LOUVRE
 LWL WALL LIGHT
 LYR LOCKER SYSTEM

W1.05 WINDOW MARKER
 eg WINDOW / LEVEL 1 / WINDOW N° 05
 D1.05 DOOR MARKER
 eg DOOR / LEVEL 1 / DOOR N° 05

LEGEND



01 NORTH ELEVATION
 Scale 1:100



02 EAST ELEVATION
 Scale 1:100

COMPLETION OF THE QA CHECKS IS VERIFICATION THAT THE DOCUMENT CONFORMS WITH THE REQUIREMENTS OF THE QUALITY PROJECT PLAN, WHERE THE QUALITY ASSURANCE CHECK IS INCOMPLETE THIS DOCUMENT IS PRELIMINARY FOR INFORMATION PURPOSES ONLY, OR SUCH PURPOSES AS STATED IN THE REVISION COLUMN. THE IDEAS, INFORMATION AND CONCEPTS CONTAINED IN THIS DOCUMENT ARE THE PROPERTY OF EJE. PHOTOCOPYING OR REPRODUCING THIS DOCUMENT AND PASSING IT ON TO OTHERS WITHOUT THE EXPRESS PERMISSION OF EJE IS AN INFRINGEMENT OF COPYRIGHT. WORK IN FIGURED DIMENSIONS IN PREFERENCE TO SCALE. CHECK DIMENSIONS AND LEVELS ON SITE PRIOR TO THE ORDERING OF MATERIALS OR THE COMPLETION OF WORKSHOP DRAWINGS. IF IN DOUBT ASK, REPORT ALL ERRORS AND OMISSIONS.

ACN 002 912 843 | ABN 82 644 649 849 Nominated Architect - Bernard Collins NSW Architects Registration No. 4438
 A 412 KING STREET, NEWCASTLE, NSW 2300 P +61 2 4926 2353 | F +61 2 4926 3069 | E mail@eje.com.au | W www.eje.com.au



| REV | DATE | COMMENTS | DRN | CHKD | VRFD |
|-----|------------|-----------------------------|-----|------|------|
| A | 4/05/2023 | REVISED CONCEPT ISSUE | CB | BH | JBS |
| B | 17/08/2023 | CLIENT REVIEW | EWS | CIW | BH |
| C | 24/08/2023 | ISSUE TO CONSULTANTS | EWS | CIW | BH |
| D | 5/09/2023 | REVISE ISSUE TO CONSULTANTS | EWS | CIW | BH |
| E | 13/09/2023 | ISSUE TO CONSULTANTS | EWS | CIW | BH |
| F | 21/09/2023 | 50% DA ISSUE | EWS | CIW | BH |
| G | 27/09/2023 | ISSUE FOR DA | EWS | CIW | BH |

PROJECT: MAX MCMAHON OVALAMENITIES
 RUTHERFORD OVAL, WEBLANDS
 ST, RUTHERFORD, NSW 2320

CLIENT: maitland city council

DRAWING: NORTH & EAST ELEVATIONS

DRAWN: EWS DATE: 27/09/2023 SCALES @A1: 1:100

FILENAME: 14280_Max McMahon Oval Amenities_DA [20230817] - STAGE 1 & 2.pln

PROJECT No: 14280 PHASE: DA DRAWING No: A07 REV: G



ABBREVIATIONS

AC AIR CONDITIONING - REFER TO MECHANICAL DOCUMENTATION
 ACP ALUMINIUM COMPOSITE PANEL
 ACS SOLID SURFACE
 ADJ ADJUSTABLE SHELF
 AHD AUSTRALIAN HEIGHT DATUM
 AL ALUMINIUM LOUVER
 ALB ALUMINIUM BATTEN
 ALS VERTICAL ALUMINIUM SCREEN
 AP ACCESS PANEL
 AR ARCHITRAVE
 AS AUSTRALIAN STANDARD
 BA BARRIE BOARD
 BAL BALUSTRADE
 BC BABY CHANGE TABLE
 BOT BENCHTOP
 BF BIFOLD DOOR
 BG BOX GUTTER

BH BULKHEAD
 BIN GARBAGE BIN
 BK CONCRETE BLOCKWORK
 BRK BRICKWORK
 BOL BOLLARD
 BS BENCH SEAT
 BT BOTTLE TRAP
 BTH BATHTUB
 CAP CAPPING
 CB PREFINISHED STEEL
 CBG COLOUR-BACKED GLASS
 CPC COMPRESSED FIBRE CEMENT
 CH COAT HOOK
 CJ CONSTRUCTION / CONTROL JOINT
 CL CENTRE LINE
 CLD CLADDING
 CLS CLOTHESLINE

COL COLUMN - REFER TO STRUCTURAL DOCUMENTATION
 CONC CONCRETE
 COS CONFIRM ON SITE
 CPC COLORBOND PARAPET CAPPING
 CPD CURBBOARD
 OPT CARPET
 CR CEMENT RENDER
 CRN CORNICE
 CRT CURTAIN
 CRR CURTAIN RAIL
 CS CLEANERS SINK
 CUS COVERED SHIRTING
 CW COLD WATER
 DP DOWNPIPE - REFER TO HYDRAULIC DOCUMENTATION
 DR DOOR
 DS DOOR STOP
 EDB ELECTRICAL DISTRIBUTION BOARD - REFER TO ELECTRICAL DOCUMENTATION

EF EXHAUST FAN
 EG EAVES GUTTER - REFER TO HYDRAULIC DOCUMENTATION
 EJ EXPANSION JOINT
 ELP ELECTRICAL PLATE
 ENS ENSUITE
 EP EPOXY FLOORING
 EPS EXPANDED POLYSTYRENE CLADDING SYSTEM
 ED EQUAL SPACING
 FB FACE BRICK
 FC FIBRE CEMENT SHEETING
 FE FIRE EXTINGUISHER
 FFL FINISHED FLOOR LEVEL
 FG FIXED GLASS
 FH FIRE HYDRANT - REFER TO HYDRAULIC DOCUMENTATION
 FHR FIRE HOSE REEL - REFER TO HYDRAULIC DOCUMENTATION

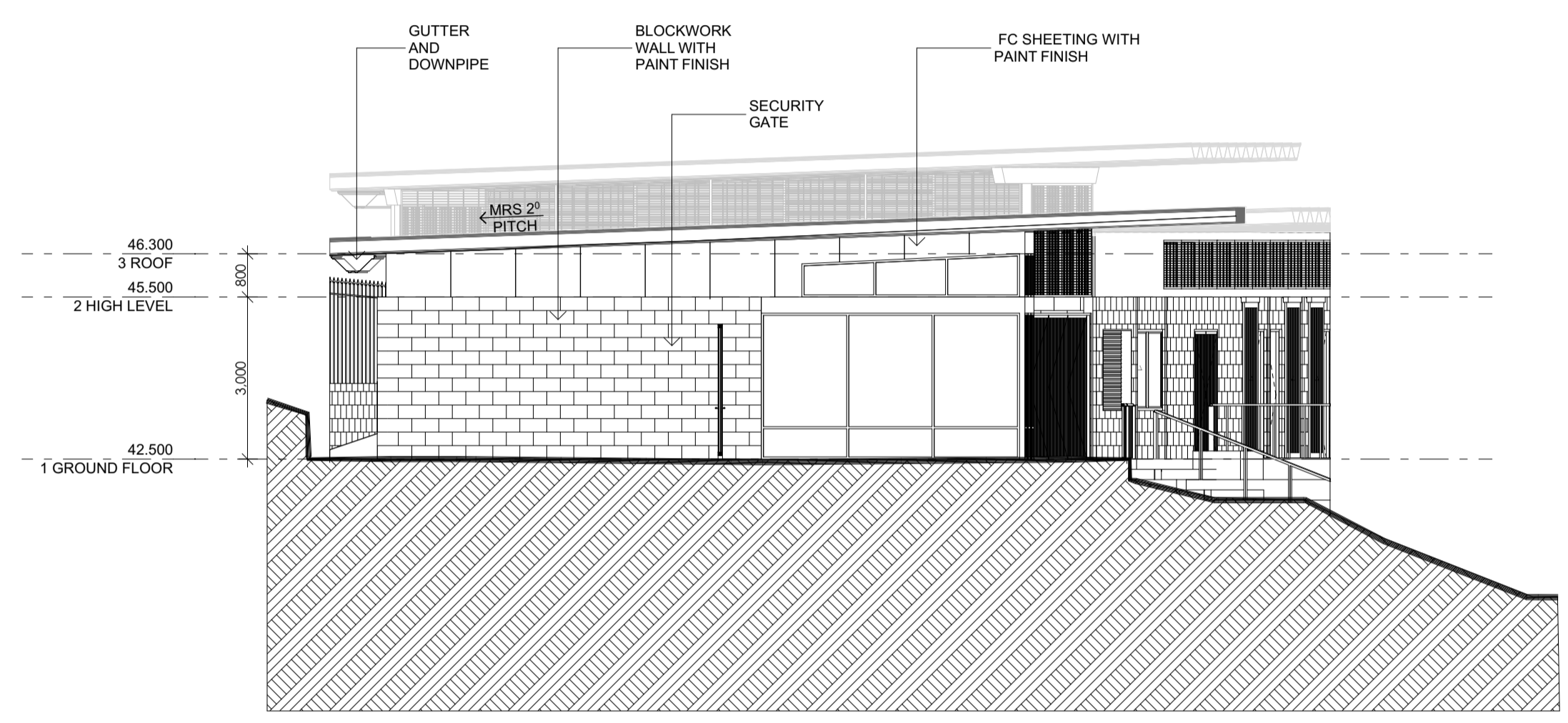
FI FIRE INDICATOR PANEL TO CONSULTANTS REQUIREMENTS
 FL FLASHING
 FLM FILM
 FR FIRE RESISTANCE
 FRP FIREPLACE
 FS FIXED SHELF
 FT FLOOR TILES
 FW FLOOR WASTE
 G GLASS
 GA GREASE ARRESTOR
 GC GARBAGE CHUTE
 GD GRATED DRAIN
 GL GLASS LOUVRES
 GR GRAB RAIL
 GRD GARAGE DOOR
 GRV GRAVEL
 GP GRATED PIT - REFER TO HYDRAULIC DOCUMENTATION

GT GUTTER TRANSOM
 GW GLASS WINDOW
 HA HOME AUTOMATION CLIPBOARD
 HB HAND BASIN
 HD HINGED DOOR
 HDR HAND DRYER
 HP HIGH POINT
 HR HANDRAIL
 HRL HANGING RAIL
 HT HOSE TAP
 HTR HEATER
 HWS HOT WATER SYSTEM
 HYD HYDRAULIC
 J JOINERY
 KK KICK
 LB LINING BOARDS
 LD ACCESS LADDER

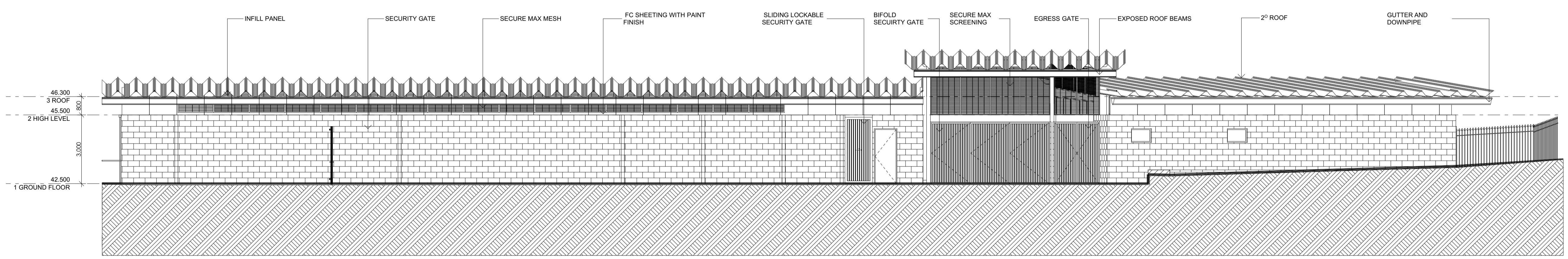
LDL DOWNLIGHT
 LDY LAUNDRY
 LK LOCKER SYSTEM
 LP LIGHT FITTING POCKET IN CONCRETE SLAB SOFFIT
 LPN PENDANT LIGHT
 LPL LIGHT POLE - REFER TO ELECTRICAL DOCUMENTATION
 LST LED STRIP LIGHT
 LTB LETTERBOX
 LVR LOUVRE
 LWL WALL LIGHT
 MC METAL CLADDING
 MDB MAIN DISTRIBUTION BOARD - REFER TO ELECTRICAL DOCUMENTATION
 MECH MECHANICAL
 MEL MELAMINE
 MI MIRROR
 MRS METAL ROOF SHEETING
 MW MATWELL

LEGEND

W1.05 WINDOW MARKER
 eg WINDOW / LEVEL 1 / WINDOW N° 05
 D1.05 DOOR MARKER
 eg DOOR / LEVEL 1 / DOOR N° 05



03 SOUTH ELEVATION
 Scale 1:100



04 WEST ELEVATION
 Scale 1:100

COMPLETION OF THE QA CHECKS IS VERIFICATION THAT THE DOCUMENT CONFORMS WITH THE REQUIREMENTS OF THE QUALITY PROJECT PLAN, WHERE THE QUALITY ASSURANCE CHECK IS INCOMPLETE THIS DOCUMENT IS PRELIMINARY FOR INFORMATION PURPOSES ONLY, OR SUCH PURPOSES AS STATED IN THE REVISION COLUMN. THE IDEAS, INFORMATION AND CONCEPTS CONTAINED IN THIS DOCUMENT ARE THE PROPERTY OF EJE. PHOTOCOPYING OR REPRODUCING THIS DOCUMENT AND PASSING IT ON TO OTHERS WITHOUT THE EXPRESS PERMISSION OF EJE IS AN INFRINGEMENT OF COPYRIGHT. WORK IN FIGURED DIMENSIONS IN PREFERENCE TO SCALE. CHECK DIMENSIONS AND LEVELS ON SITE PRIOR TO THE ORDERING OF MATERIALS OR THE COMPLETION OF WORKSHOP DRAWINGS. IF IN DOUBT ASK, REPORT ALL ERRORS AND OMISSIONS.

ACN 002 912 843 | ABN 82 644 649 849 Nominated Architect - Bernard Collins NSW Architects Registration No. 4438
 A 412 KING STREET, NEWCASTLE, NSW 2300 P +61 2 4929 2353 | F +61 2 4926 3069 | E mail@eje.com.au | W www.eje.com.au

| REV | DATE | COMMENTS | DRN | CHKD | VRFD |
|-----|------------|-----------------------------|-----|------|------|
| A | 4/05/2023 | REVISED CONCEPT ISSUE | CB | BH | JBS |
| B | 17/08/2023 | CLIENT REVIEW | EWS | CIW | BH |
| C | 24/08/2023 | ISSUE TO CONSULTANTS | EWS | CIW | BH |
| D | 5/09/2023 | REVISE ISSUE TO CONSULTANTS | EWS | CIW | BH |
| E | 13/09/2023 | ISSUE TO CONSULTANTS | EWS | CIW | BH |
| F | 21/09/2023 | 50% DA ISSUE | EWS | CIW | BH |
| G | 27/09/2023 | ISSUE FOR DA | EWS | CIW | BH |

PROJECT: **MAX MCMAHON OVALAMENITIES**
 RUTHERFORD OVAL, WEBLANDS
 ST, RUTHERFORD, NSW 2320

CLIENT: **maitland city council**

DRAWING: **SOUTH & WEST ELEVATIONS**

DRAWN: **EWS** DATE: **27/09/2023** SCALES @A1: **1:100**

FILENAME: 14280_Max McMahon Oval Amenities_DA [20230817] - STAGE 1 & 2.pln

PROJECT No: **14280** PHASE: **DA** DRAWING No: **A08** REV: **G**

