

# Maitland Town Hall





## Introduction

Nestled in the heart of Central Maitland, the newly refurbished Maitland Town Hall stands as a beacon of elegance and sophistication and serves as the perfect venue for your most prestigious events.

From theatrical performances and lavish weddings, to captivating receptions and chic cocktail parties, Town Hall sets the stage for countless unforgettable moments.

Prepare to be captivated by the exquisite architecture and the seamless integration of modern amenities within this historical gem.

Let this historic venue serve as the backdrop and perfect destination for your next boardroom meeting, exhibition, conference, wedding or event.



## Location

Located in Central Maitland, only two hours north of Sydney and 35 minutes from Newcastle Airport (NTL), Maitland is easily accessible to conference delegates from across the state. Newcastle Airport provides a direct connection to Sydney, Dubbo, Taree, Coffs Harbour and Ballina/Byron Bay. Interstate flights also make Maitland accessible from the Gold Coast, Cairns, Sunshine Coast, The Whitsundays, Brisbane, Canberra and Melbourne.

With a train station located in the city centre, Maitland is also accessible via rail from the north and south.



## Venue at a glance

With a grand auditorium, four additional breakout rooms and foyer area, flexible set ups, state of the art equipment and a dedicated team motivated to ensure your event is a success, Maitland Town Hall can cater for a variety of events.

Stepping into the Main Hall is like stepping back in time, with the space embracing the grace and charm of a bygone era while seamlessly blending with modern amenities. Immerse yourself in its timeless beauty as you discover a versatile setting that can easily accommodate up to 300 guests theatre style or 200 in a formal setting, complemented with breakroom options, a large stage area, dressing rooms and a green room, making this the perfect venue for concerts, performances, exhibitions and tradeshow.



# Venue Capacity



FLOOR SIZE



BOARDROOM



THEATRE



BANQUET



U-SHAPE



CLASSROOM



CABARET



COCKTAIL

## Main Hall

**469m<sup>2</sup>**    **300\***    **320\***    **208\***    **78**    **80**    **104**    **300**

## Evans Room

**200m<sup>2</sup>**    **30**    **196**    **96**    **50**    **50**    **48**    **150**

## Maitland Room

**110m<sup>2</sup>**    **30**    **55**    **48**    **29**    **24**    **24**    **50**

## Heritage Room

**34m<sup>2</sup>**    **10**    **25**    **8**    **10**

## Paterson Room

**35m<sup>2</sup>**    **8**    **25**    **8**    **10**

## Hunter Room

**36m<sup>2</sup>**    **12**    **25**

## Committee Room 1

**36m<sup>2</sup>**    **10**    **25**

## Maitland Administration Centre Foyer

**148m<sup>2</sup>**    **100**

\*Seating capacity might change due to table size, see individual room pages for more details



# Main Hall



FLOOR SIZE

**469m<sup>2</sup>**



STAGE SIZE

**180m<sup>2</sup>**



BOARDROOM

**300** dining  
**50** single table



THEATRE

**320** floor seating  
**316** with floor seating and retractable seating



CLASSROOM

**80**



CABARET

**104**



COCKTAIL

**300**



BANQUET

**208** no dancefloor



U-SHAPE

**78**

The stunning Main Hall embraces the grace and charm of a bygone era while seamlessly blending with modern amenities, making it the ideal space for large functions, weddings, conferences, presentations, live shows, performances and concerts.

Discover a versatile setting that can easily accommodate up to 300 guests theatre style or 200 in a formal setting, complemented with breakroom options, a large stage area, dressing rooms and a green room.



# Main Hall





## Evans Room



FLOOR SIZE

**200m<sup>2</sup>**



BOARDROOM

**30**



THEATRE

**196**



CLASSROOM

**50**



CABARET

**48**



COCKTAIL

**150**



BANQUET

**96**



U-SHAPE

**50**

The Evans Room is a suitable space for smaller, intimate and private functions, such as conferences, dinner parties, presentations, cocktail parties and weddings. It can also be an optional break out area for larger conferences.



# Evans Room





## Maitland Room



FLOOR SIZE

**110m<sup>2</sup>**



BOARDROOM

**30**



THEATRE

**55**



CLASSROOM

**24**



CABARET

**24**



COCKTAIL

**50**



BANQUET

**48**



U-SHAPE

**29**

The Maitland Room is suitable as a conference space, training room or meeting room with the option for larger conferences to use this space as a breakout area. The Maitland Room is the second largest of the meeting spaces at 110 square metres. This versatile space comfortably seats up to 55 guests and is ideal for cocktail parties, banquet style events or corporate functions.



## Heritage Room



FLOOR SIZE

**34m<sup>2</sup>**



BOARDROOM

**10**



THEATRE

**25**



BANQUET

**8**



U-SHAPE

**10**

For those looking to host smaller scale events including meetings, training seminars and corporate launches, the Heritage Room is sure to impress your guests.

## Paterson Room



FLOOR SIZE

**35m<sup>2</sup>**



BOARDROOM

**8**



THEATRE

**25**



BANQUET

**8**



U-SHAPE

**10**

The Paterson Room is suitable for smaller scale events including meetings and training seminars or break out sessions for larger conferences.





## Hunter Room



FLOOR SIZE

**36m<sup>2</sup>**



BOARDROOM

**12**



THEATRE

**25**

The Hunter Room is suitable as a conference break out room, meeting room or training room.



## Committee Room 1



FLOOR SIZE

**36m<sup>2</sup>**



BOARDROOM

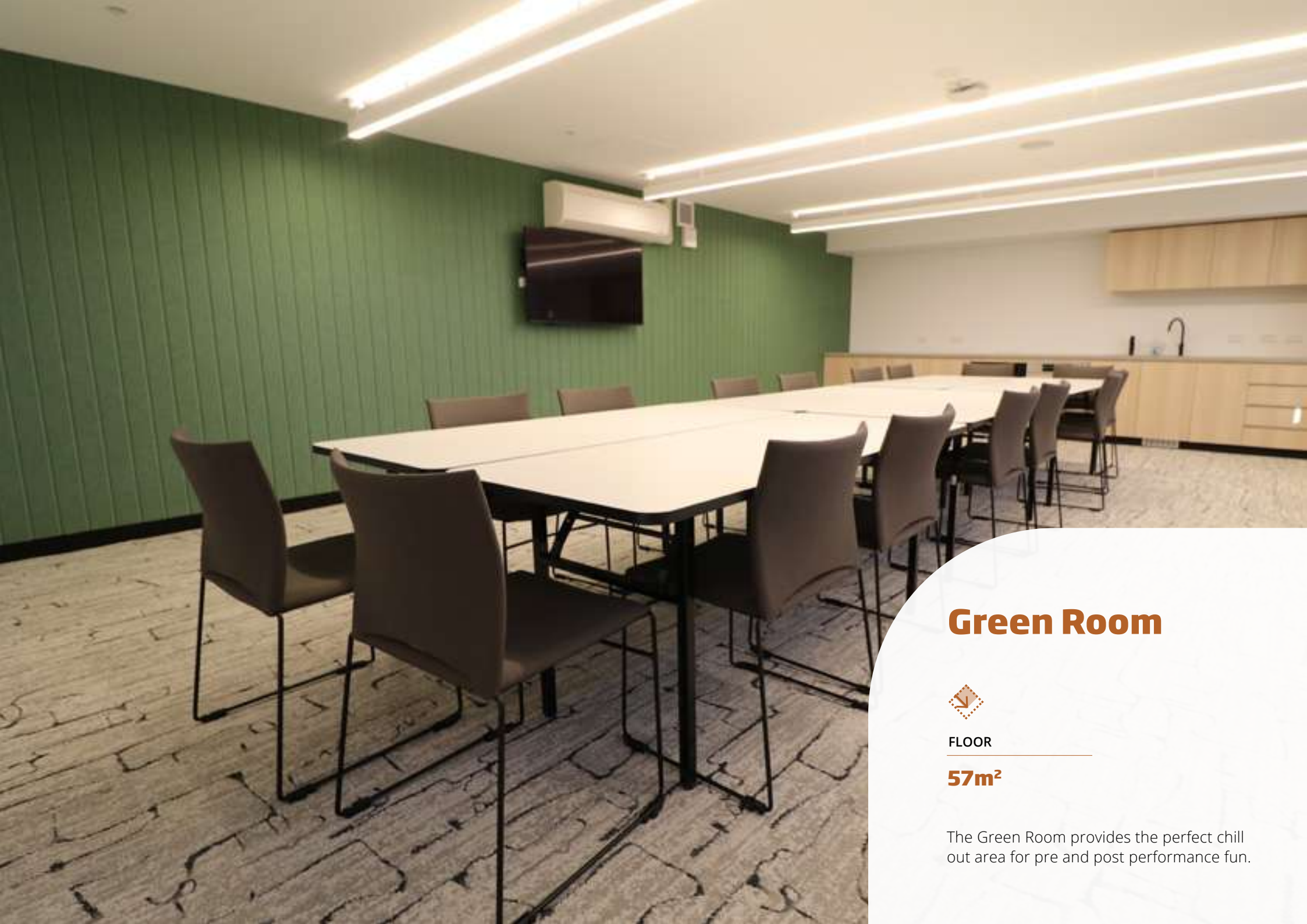
**10**



THEATRE

**25**

The Committee Room 1 is suitable as a conference break out room, meeting room or training room.



## Green Room



FLOOR

**57m<sup>2</sup>**

The Green Room provides the perfect chill out area for pre and post performance fun.



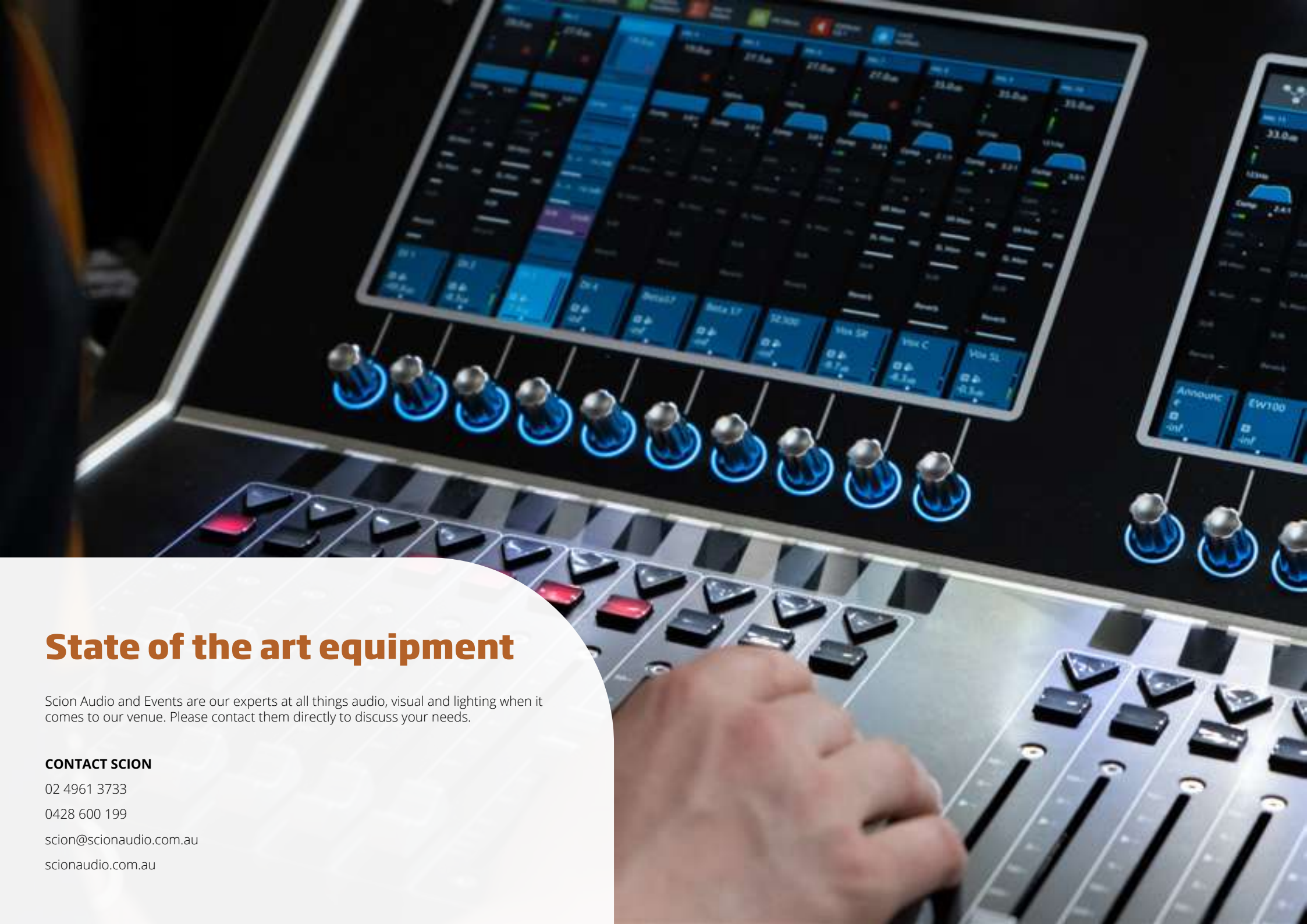
## Sunken foyer



FLOOR

**148m<sup>2</sup>**

Welcome your guests to Maitland Town Hall via the Maitland Administration Centre foyer and sunken foyer space, our arrival destination for hosting sophisticated gatherings or mid event breakout functions. Offering the perfect blend of heritage charm and contemporary flair, the space also features a large projection screen to showcase images, videos or welcome messages for your event.



## State of the art equipment

Scion Audio and Events are our experts at all things audio, visual and lighting when it comes to our venue. Please contact them directly to discuss your needs.

### CONTACT SCION

02 4961 3733

0428 600 199

[scion@scionaudio.com.au](mailto:scion@scionaudio.com.au)

[scionaudio.com.au](http://scionaudio.com.au)

# Catering

We understand the importance of selecting the right cuisine for your event and as such, only use a selection of preferred caterers.

## CATERER CONTACTS

### **Eat Me Catering**

Amanda Suffell

0421 502 299

dine@eatmecatering.com.au

eatmecatering.com.au

### **Sprout Catering & Kitchen**

Jacque and Tom Brown

02 4032 7920

0410 409 746

info@sproutcatering.com.au

sproutcatering.com.au

### **Little Castro Catering**

Damian Beric

0497 706 243

info@littlecastrocatering.com.au







## **Versatile event space**

Our diverse and impressive venue effortlessly transforms to suit your event's unique needs. Whether you're envisioning a grand wedding, a dynamic corporate function, an artful exhibition, a lively social gathering or a captivating theatre production, we've got you covered.

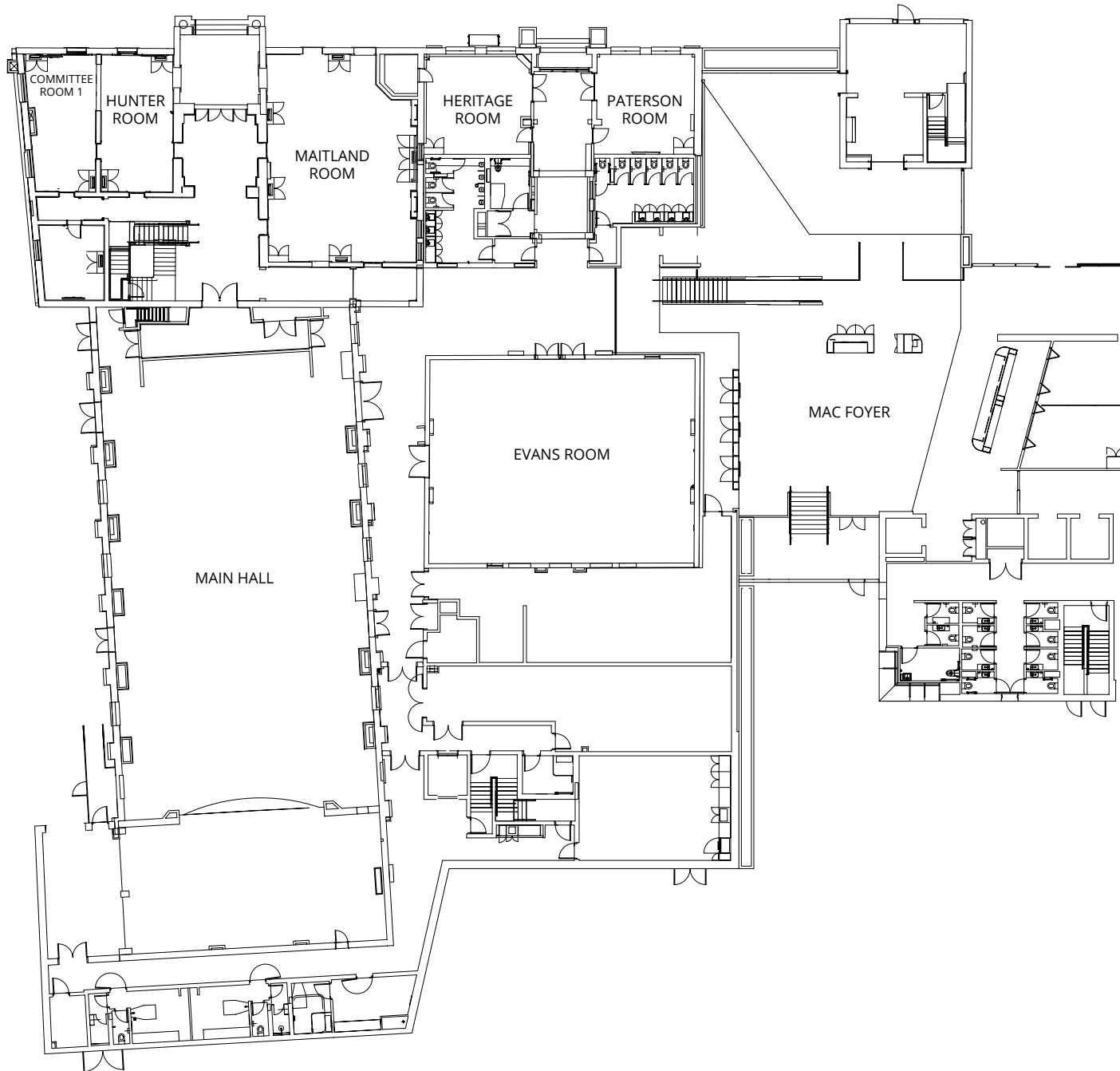
A photograph of the Maitland Administration Centre building. The building features a mix of brickwork and large glass windows. A blue car is parked in the foreground on the right. The sky is clear and blue.

## Parking and accessibility

Representing a new era for Maitland Town Hall, entry to the venue is now via the Maitland Administration Centre. The building is accessible from both High Street and the Maitland Administration Centre car park on Devonshire Street.

The Maitland Administration Centre car park is available to guests of Maitland Town Hall of an evening and on weekends. Guests can access the building from the surrounding public parking when attending daytime events.

# Venue Footprint



Contact a member of our team  
for further package information,  
check availability or to arrange a  
personalised tour and meeting.

263 High Street  
Maitland NSW 2320

02 4934 9700

[recreation@maitland.nsw.gov.au](mailto:recreation@maitland.nsw.gov.au)

[maitland.nsw.gov.au/maitland-town-hall](http://maitland.nsw.gov.au/maitland-town-hall)



**maitland**  
city council