



Maitland Local Environmental Plan 2011

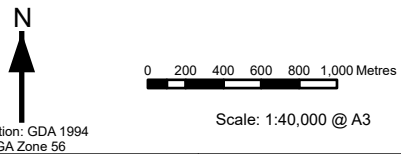
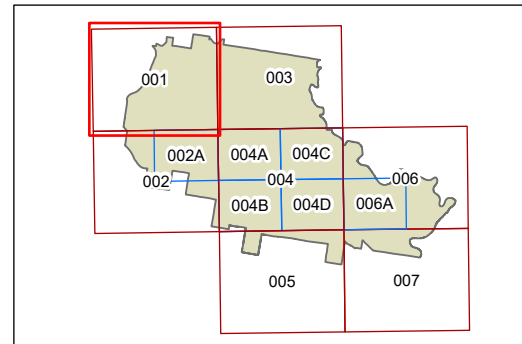
Land Zoning Map - Sheet LZN_001

Zone

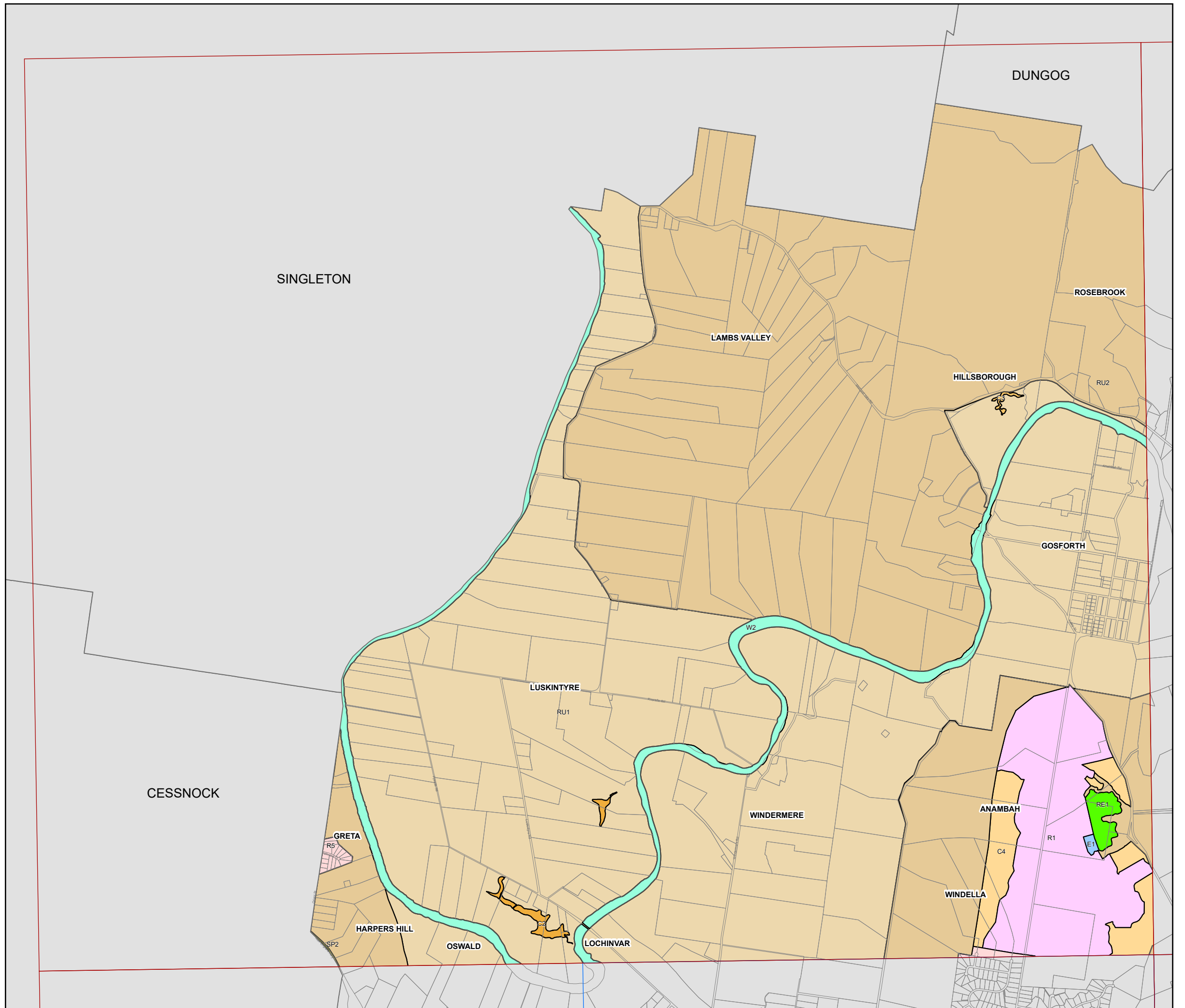
- C2 Environmental Conservation
- C3 Environmental Management
- C4 Environmental Living
- E1 Local Centre
- E2 Commercial Centre
- E3 Productivity Support
- E4 General Industry
- MU1 Mixed Use
- R1 General Residential
- R5 Large Lot Residential
- RE1 Public Recreation
- RE2 Private Recreation
- RU1 Primary Production
- RU2 Rural Landscape
- SP1 Special Activities
- SP2 Infrastructure
- SP3 Tourist
- W2 Recreational Waterways

Cadastre

Cadastre 14/03/23 © Spatial Services



Map identification number: 5050_COM_LZN_001_020_20240314





Maitland Local Environmental Plan 2011

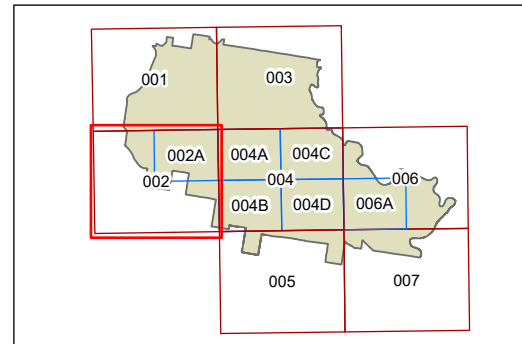
Land Zoning Map - Sheet LZN_002

Zone

- C2 Environmental Conservation
- C3 Environmental Management
- C4 Environmental Living
- E1 Local Centre
- E2 Commercial Centre
- E3 Productivity Support
- E4 General Industry
- MU1 Mixed Use
- R1 General Residential
- R5 Large Lot Residential
- RE1 Public Recreation
- RE2 Private Recreation
- RU1 Primary Production
- RU2 Rural Landscape
- SP1 Special Activities
- SP2 Infrastructure
- SP3 Tourist
- W2 Recreational Waterways

Cadastre

Cadastre 14/03/23 © Spatial Services

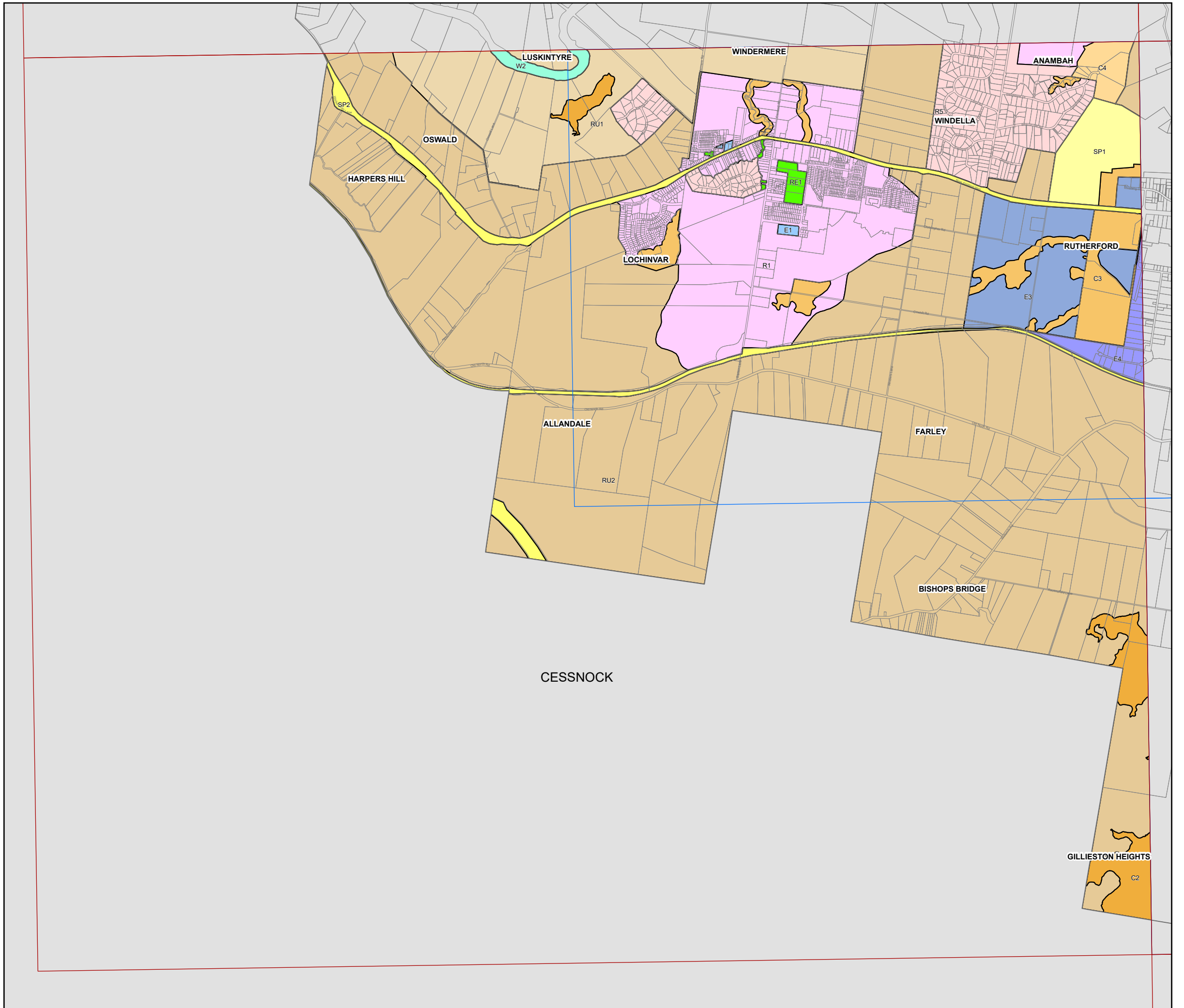


0 200 400 600 800 1,000 Metres

Scale: 1:40,000 @ A3

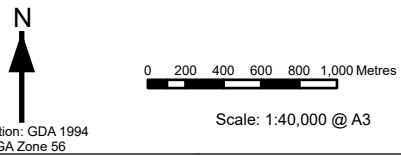
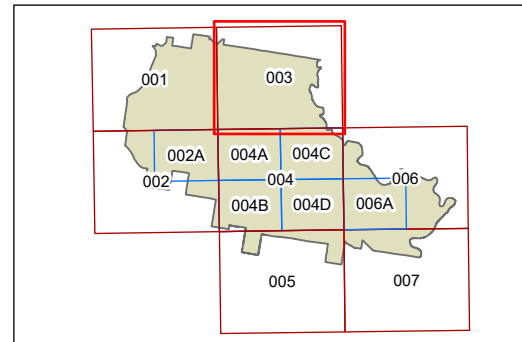
Projection: GDA 1994
MGA Zone 56

Map identification number:
5050_COM_LZN_002_020_20240314

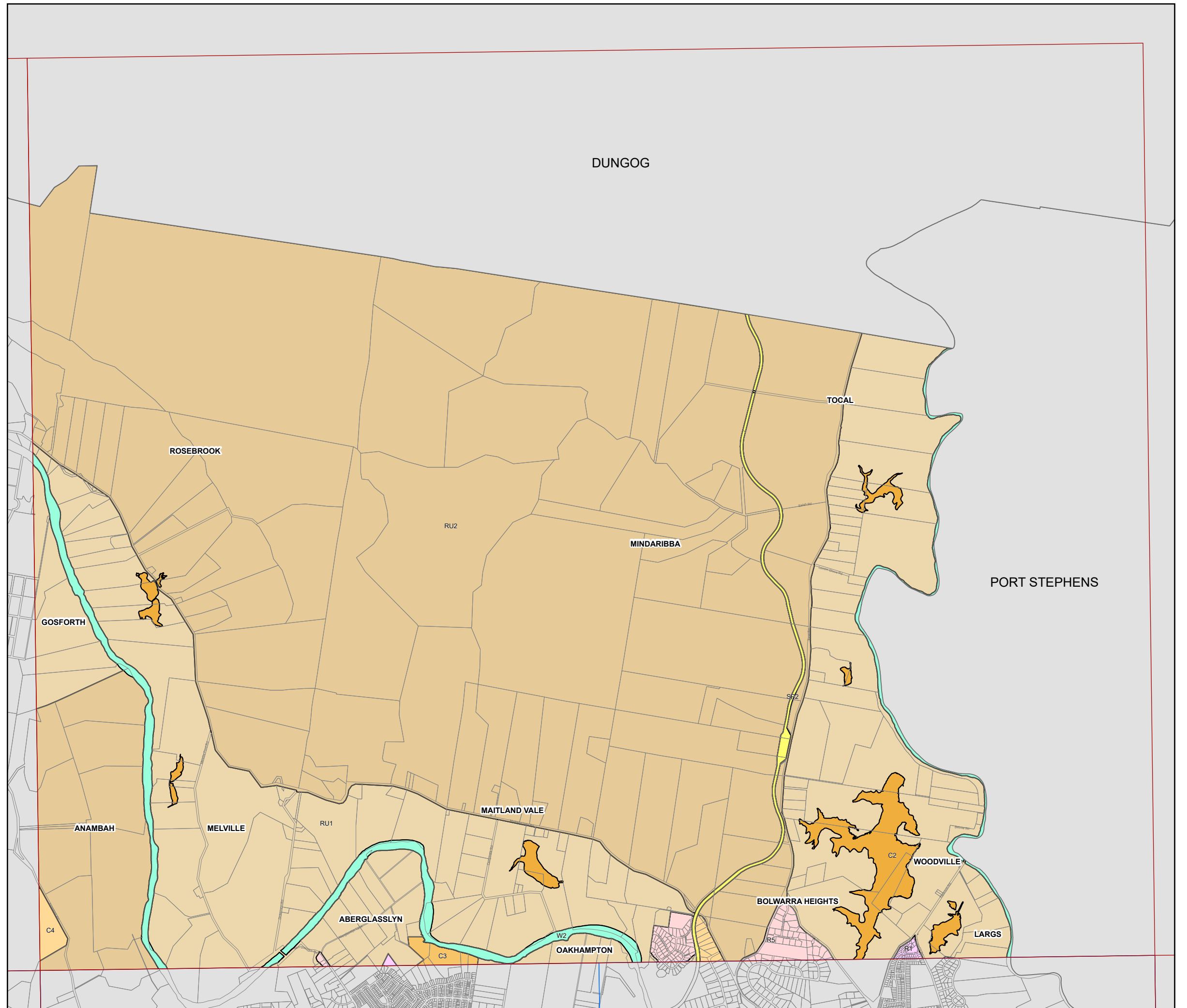


- Zone**
- C2 Environmental Conservation
 - C3 Environmental Management
 - C4 Environmental Living
 - E1 Local Centre
 - E2 Commercial Centre
 - E3 Productivity Support
 - E4 General Industry
 - MU1 Mixed Use
 - R1 General Residential
 - R5 Large Lot Residential
 - RE1 Public Recreation
 - RE2 Private Recreation
 - RU1 Primary Production
 - RU2 Rural Landscape
 - SP1 Special Activities
 - SP2 Infrastructure
 - SP3 Tourist
 - W2 Recreational Waterways

Cadastre
 Cadastre 14/03/23 © Spatial Services



Map identification number:
5050_COM_LZN_003_020_20240314





Maitland Local Environmental Plan 2011

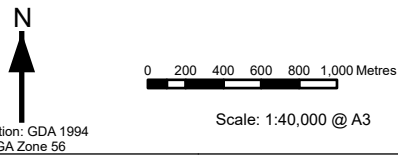
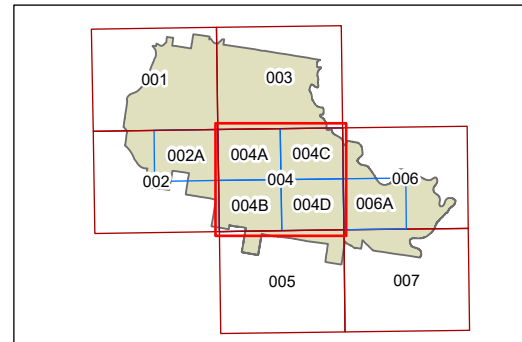
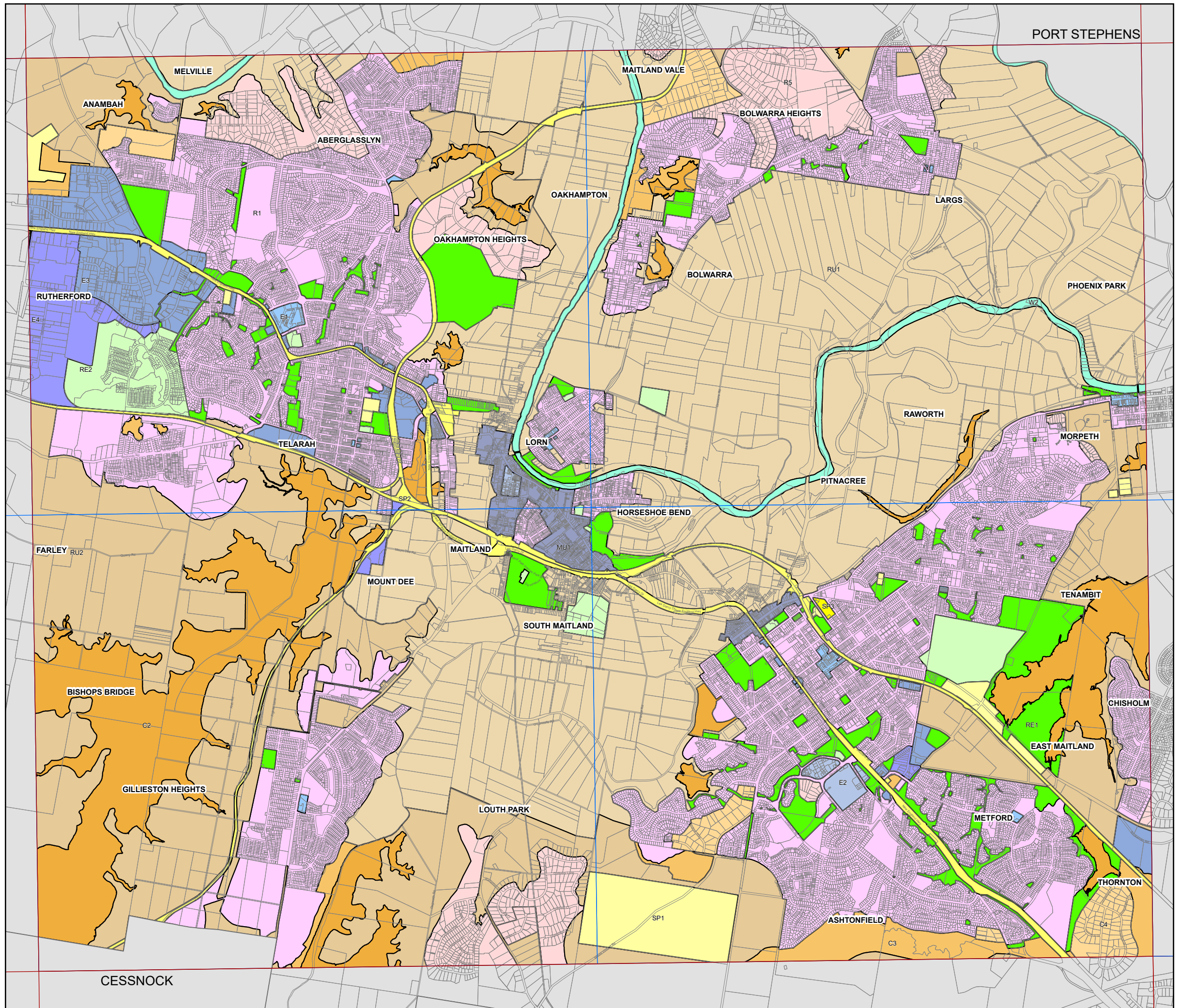
Land Zoning Map - Sheet LZN_004

Zone

- C2 Environmental Conservation
- C3 Environmental Management
- C4 Environmental Living
- E1 Local Centre
- E2 Commercial Centre
- E3 Productivity Support
- E4 General Industry
- MU1 Mixed Use
- R1 General Residential
- R5 Large Lot Residential
- RE1 Public Recreation
- RE2 Private Recreation
- RU1 Primary Production
- RU2 Rural Landscape
- SP1 Special Activities
- SP2 Infrastructure
- SP3 Tourist
- W2 Recreational Waterways

Cadastre

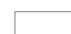
Cadastre 14/03/23 © Spatial Services

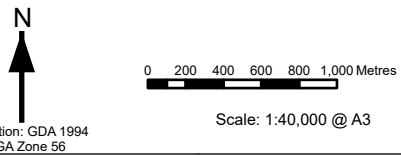
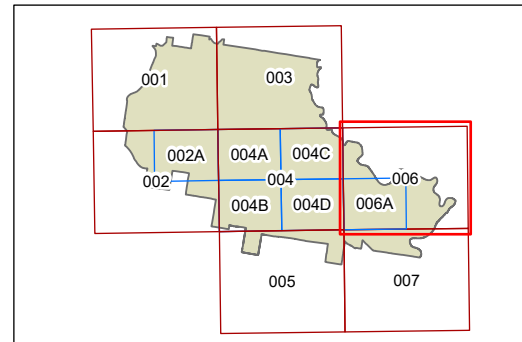


Zone

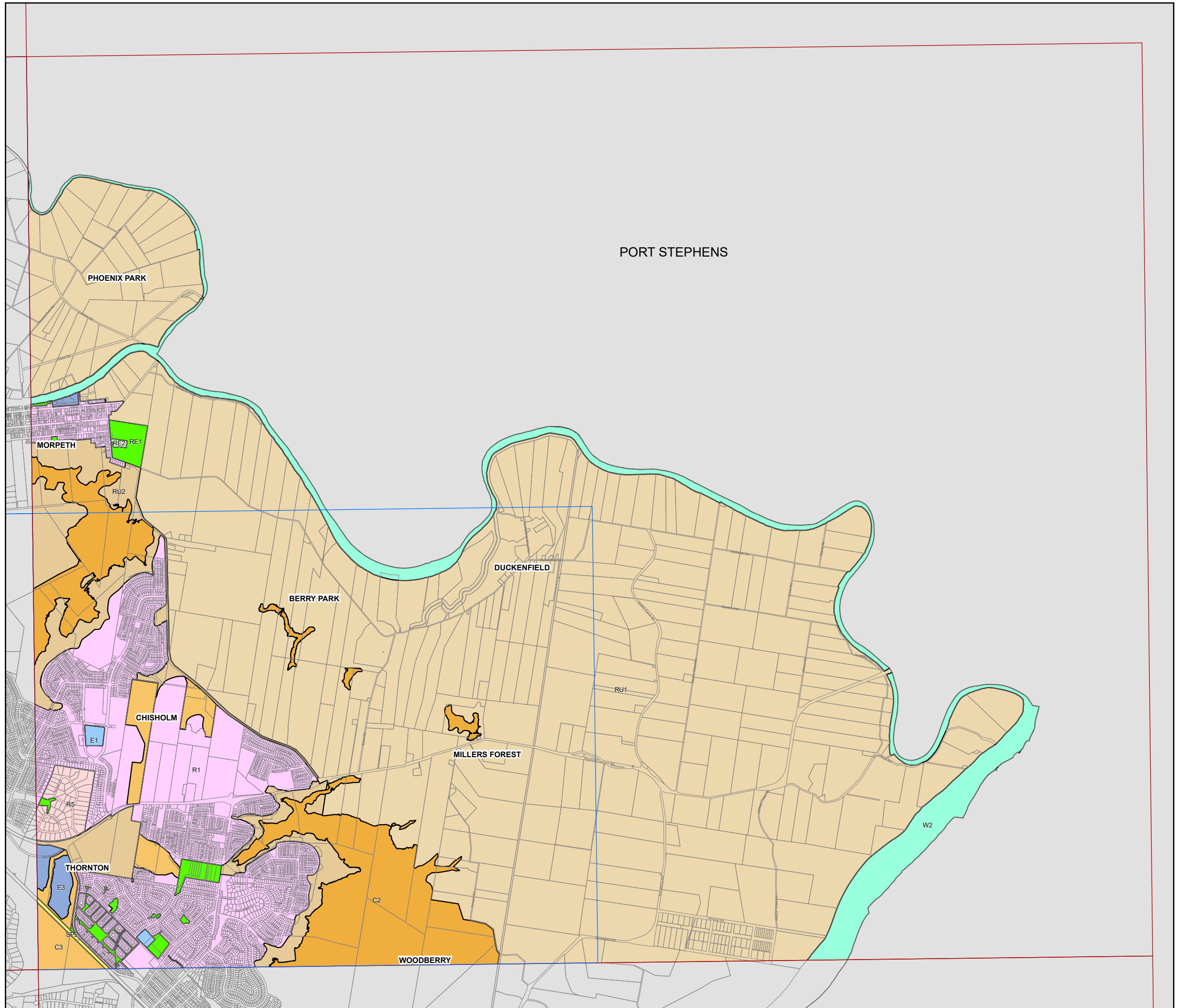
- C2 Environmental Conservation
- C3 Environmental Management
- C4 Environmental Living
- E1 Local Centre
- E2 Commercial Centre
- E3 Productivity Support
- E4 General Industry
- MU1 Mixed Use
- R1 General Residential
- R5 Large Lot Residential
- RE1 Public Recreation
- RE2 Private Recreation
- RU1 Primary Production
- RU2 Rural Landscape
- SP1 Special Activities
- SP2 Infrastructure
- SP3 Tourist
- W2 Recreational Waterways

Cadastre

 Cadastre 14/03/23 © Spatial Services



Map identification number:
5050_COM_LZN_006_020_20240314





Maitland Local Environmental Plan 2011

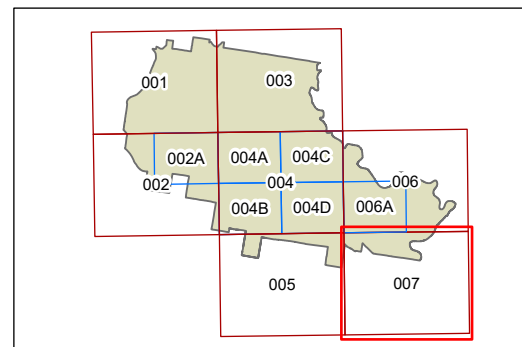
Land Zoning Map - Sheet LZN_007

Zone

- C2 Environmental Conservation
- C3 Environmental Management
- C4 Environmental Living
- E1 Local Centre
- E2 Commercial Centre
- E3 Productivity Support
- E4 General Industry
- MU1 Mixed Use
- R1 General Residential
- R5 Large Lot Residential
- RE1 Public Recreation
- RE2 Private Recreation
- RU1 Primary Production
- RU2 Rural Landscape
- SP1 Special Activities
- SP2 Infrastructure
- SP3 Tourist
- W2 Recreational Waterways

Cadastre

Cadastre 14/03/23 © Spatial Services



0 200 400 600 800 1,000 Metres

Scale: 1:40,000 @ A3

Projection: GDA 1994
MGA Zone 56

Map identification number:
5050_COM_LZN_007_020_20240314

