



# BUSHFIRE THREAT ASSESSMENT

FOR  
A PROPOSED STRATA SUBDIVISION  
INCLUDING RESIDENTIAL UNIT  
DEVELOPMENT AT  
119 SPRINGFIELD DRIVE,  
LOCHINVAR NSW 2321

Prepared by:

**Firebird ecoSultants Pty Ltd**

ABN – 16 105 985 993

PO Box 354

Newcastle NSW 2300

Mob: 0414 465 990

Ph: 02 4910 3939

Fax: 02 4929 2727

Email: [sarah@firebirdeco.com.au](mailto:sarah@firebirdeco.com.au)



<b>Site Details:</b>	119 Springfield Drive, Lochinvar NSW 2321
<b>Prepared by:</b>	<b><i>Sarah Jones B.Env.Sc.,G.Dip.DBPA (Design in Bushfire Prone Areas)</i></b> <b><i>Firebird ecoSultants Pty Ltd</i></b> ABN – 16 105 985 993 PO Box 354, Newcastle NSW 2300 M: 0414 465 990                      Email: <a href="mailto:sarah@firebirdeco.com.au">sarah@firebirdeco.com.au</a> T: 02 4910 3939                      Fax: 02 4929 2727
<b>Prepared for:</b>	Lochinvar Downs Pty Ltd
<b>Reference No.</b>	Lochinvar – Lochinvar Downs Pty Ltd – May 2024
<b>Document Status &amp; Date:</b>	22/05/2024

#### **Disclaimer**

*Notwithstanding the precautions adopted within this report, it should always be remembered that bushfires burn under a wide range of conditions. An element of risk, no matter how small always remains, and although the standard is designed to improve the performance of such buildings, there can be no guarantee, because of the variable nature of bushfires, that any one building will withstand bushfire attack on every occasion.*

## Executive Summary

A Bushfire Threat Assessment Report (BTA) has been prepared by Firebird ecoSultants Pty Ltd at the request of Lochinvar Downs Pty Ltd for a proposed strata subdivision and residential unit development at 119 Springfield Drive, Lochinvar NSW 2321. The report forms part of the supporting documentation for a DA to be submitted to Maitland City Council (MCC).

The report demonstrates compliance with Planning for Bushfire Protection 2019 (NSW RFS, 2019) and AS3959-2018 Construction of Buildings in Bush Fire Prone Areas.

This assessment aims to consider and assess the bushfire hazard and associated potential threats relevant to the proposal. Recommendations are provided with regard to fuel management, access, provision of emergency services, building protection and construction standards to facilitate an acceptable level of bushfire protection.

In summary, the following is recommended to enable the proposal to meet the relevant legislative requirements for the proposed subdivision:

- To achieve a Bushfire Attack Level (BAL) of BAL-29 or less, the following land is to be managed as an APZ, which is made up of an Inner Protection Area (IPA) and Outer Protection Area (OPA):
  - North for a distance of 5m as an IPA, and
  - West for a distance of 10m as an IPA, inclusive of Station Lane.

These distances are to be managed as described under 'Planning for Bushfire Protection (Appendix 4 – Asset Protect Zone Requirements)' and the document titled 'Standards for Asset Protection Zones'.

- Based on the APZs provided above, the proposed multi-unit development will be able to achieve a BAL rating of BAL-29 or less.
- Access is to be provided to the site by a proposed new road which runs off station lane. Additional access and egress can be provided for firefighting vehicles to the North via the managed land which will be used in future for access for management around the basin.



Sarah Jones



B.Env.Sc., G.Dip.DBPA (Design for Bushfire Prone Areas)  
**FPA BPAD-A Certified Practitioner (Certification Number BPD -26512)**  
Ecologist / Bushfire Planner



## Terms & Abbreviations

<b>Abbreviation</b>	<b>Meaning</b>
APZ	Asset Protection Zone
AS2419 -2017	Australian Standard – Fire Hydrant Installations
AS3959-2018	Australian Standard – Construction of Buildings in Bush Fire Prone Areas
BCA	Building Code of Australia
BPA	Bush Fire Prone Area (Also Bushfire Prone Land)
BFPL Map	Bush Fire Prone Land Map
BPMs	Bush Fire Protection Measures
BFSA	Bush Fire Safety Authority
CC	Construction Certificate
<i>EPA Act</i>	<i>NSW Environmental Planning and Assessment Act 1979</i>
FFDI	Forest Fire Danger Index
FMP	Fuel Management Plan
ha	hectare
IPA	Inner Protection Area
LGA	Local Government Area
MCC	Maitland City Council
OPA	Outer Protection Area
PBP	Planning for Bushfire Protection 2019
PoM	Plan of Management
RF Act	Rural Fires Act 1997
RF Regulation	Rural Fires Regulation





---

## CONTENTS

<b>1</b>	<b>INTRODUCTION</b>	<b>1</b>
1.1	Site Particulars	1
1.2	Description of the Proposal	3
1.3	Legislative Requirements	3
1.4	Objectives of Assessment	3
<b>2</b>	<b>METHODOLOGY</b>	<b>4</b>
2.1	Vegetation Assessment	4
2.2	Slope Assessment	4
<b>3</b>	<b>SITE ASSESSMENT</b>	<b>5</b>
3.1	Vegetation & Slope Assessment	5
<b>4</b>	<b>BUSHFIRE PROTECTION ASSESSMENT</b>	<b>7</b>
4.1	Asset Protection Zones (APZ)	7
<b>5</b>	<b>DWELLING DESIGN &amp; CONSTRUCTION</b>	<b>9</b>
5.1	Determination of Bushfire Attack Levels	11
<b>6</b>	<b>COMPLIANCE</b>	<b>13</b>
<b>7</b>	<b>CONCLUSION &amp; RECOMMENDATIONS</b>	<b>21</b>
<b>8</b>	<b>BIBLIOGRAPHY</b>	<b>22</b>
	<b>APPENDIX A PROPOSED SITE PLANS</b>	<b>A-1</b>
	<b>APPENDIX B ASSET PROTECTION ZONES</b>	<b>B-1</b>

## TABLES

Table 3-1: Vegetation Classification	5
Table 4-1: Recommended APZs for Proposed Dwellings	7
Table 5-1: Determination of BALs for the proposed units within site	11
Table 6-1: Proposed Strata Subdivision and Residential Unit Development Compliance with Development Standards	13

## FIGURES

Figure 1-1: Site Location	2
Figure 3-1: Vegetation Map	6
Figure 4-1 APZ Map	8
Figure 5-1: BAL Map	12



---

# I INTRODUCTION

A Bushfire Threat Assessment Report (BTA) has been prepared by Firebird ecoSultants Pty Ltd at the request of Lochinvar Downs Pty Ltd for a proposed strata subdivision and residential unit development at 119 Springfield Drive, Lochinvar NSW 2321, hereafter referred to as the “site” (refer to Figure 1-1 for site locality). Refer to Appendix A for Proposed Site Plans.

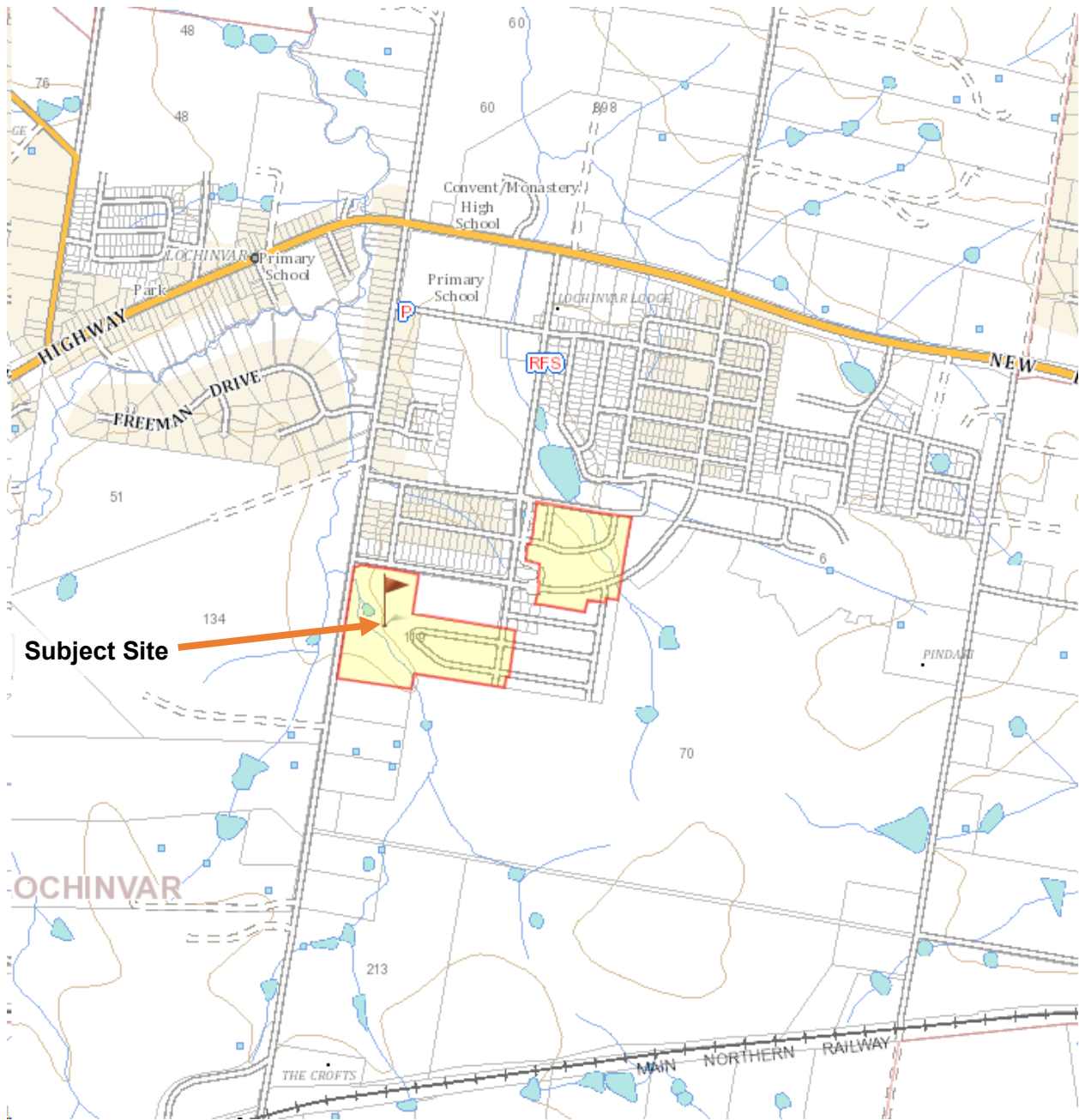
This BTA is suitable for submission with a Development Application (DA) and provides information on measures that will enable the development to comply with ‘Planning for Bushfire Protection’ (NSW RFS, 2019), hereafter referred to as PBP (RFS, 2019).

This assessment aims to consider and assess the bushfire hazard and associated potential threats relevant to such a proposal, and to outline the minimum mitigative measures which would be required in accordance with the provisions of the Environmental Planning and Assessment Amendment (Planning for Bushfire Protection) Regulation 2007 and the Rural Fires Amendment Regulation 2007 (RF Amendment Regulation 2007).

## I.1 Site Particulars

<b>Locality:</b>	119 Springfield Drive, Lochinvar NSW 2321
<b>LGA:</b>	Maitland City Council
<b>Current Land Use:</b>	Vacant lot
<b>Forest Danger Index:</b>	100 FFDI

**Figure 1-1: Site Location**





---

## **I.2 Description of the Proposal**

This DA relates to the proposal for a strata subdivision and residential unit development. Refer to Appendix A for proposed plans.

## **I.3 Legislative Requirements**

The Site has been mapped as Bush Fire Prone Land Map (BFPLM) by MCC.

This report forms part of the supporting documentation for a Development Application (DA) to be submitted to MCC.

This BTA has been prepared using current legislative requirements and associated guidelines for assessment of bushfire protection, these being:

- PBP (RRS, 2019); and
- AS3959-2018 Construction of Buildings in Bushfire Prone Area; and

## **I.4 Objectives of Assessment**

This report has been prepared to address the requirements of Clause 44 of the Rural Fires Regulation. This BTA also addresses the six key Bush Fire Protection Measures (BFRMs) in a development assessment context being:

- The provision of clear separation of buildings and bush fire hazards, in the form of fuel-reduced APZ and their components being Inner Protection Areas (IPA's) and Outer Protection Areas (OPA's);
- Sitting and design of the proposal;
- Construction standards;
- Appropriate access standards for residents, fire-fighters, emergency workers and those involved in evacuation;
- Adequate water supply and pressure, and utility services; and
- Suitable landscaping, to limit fire spreading to a building.



---

## 2 METHODOLOGY

### 2.1 Vegetation Assessment

Vegetation surveys and vegetation mapping carried out on the site has been undertaken as follows:

- Aerial Photograph Interpretation to map vegetation cover and extent
- Confirmation of the vegetation assemblage typology present.

### 2.2 Slope Assessment

Slope assessment has been undertaken as follows:

- Aerial Photograph Interpretation in conjunction with analysis of electronic contour maps with a contour interval of 10m.



### 3 SITE ASSESSMENT

The following assessment has been undertaken in accordance with the requirements of PBP (RFS, 2019).

#### 3.1 Vegetation & Slope Assessment

In accordance with PBP (RFS 2019), an assessment of the vegetation over a distance of 140m in all directions from the site was undertaken. Vegetation that may be considered a bushfire hazard was identified in all directions from the site. This assessment is depicted in Table 3-1 and Figure 3-1 that shows the vegetation post development.

In accordance with PBP (RFS 2019), an assessment of the slope that the vegetation considered a bushfire hazard was undertaken and the results are presented in Table 3.1 below.

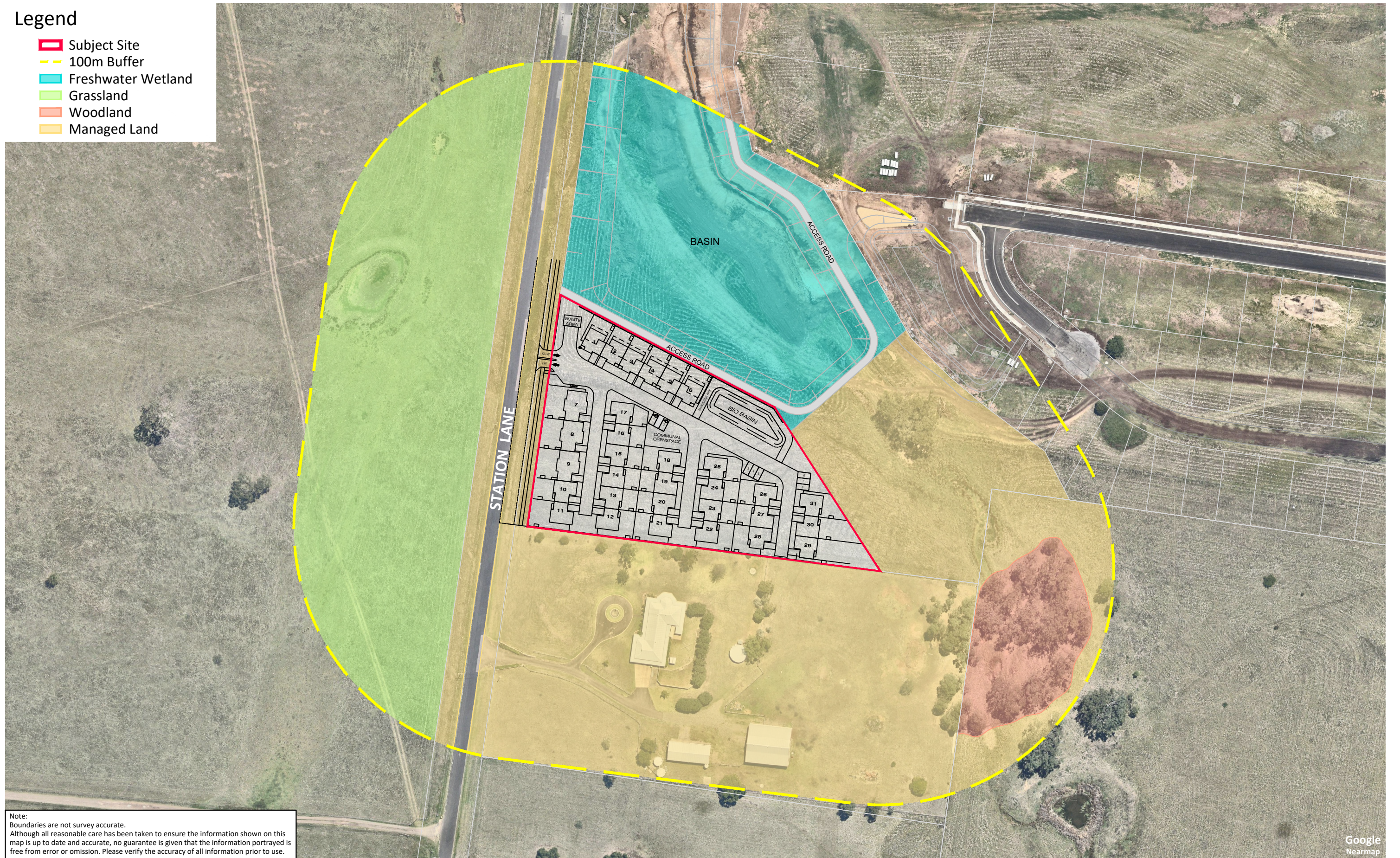
**Table 3-1: Vegetation Classification**

Direction	Vegetation Type	Distance to Vegetation	Slope
North	Forested Wetland – Drainage Basin	>5m	Upslope
East	Managed Land	N/A	N/A
South	Managed Land	N/A	N/A
West	Grassland	>10m	Flat



**Legend**

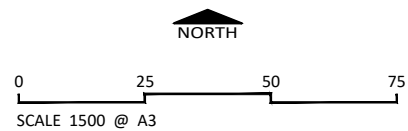
- ▭ Subject Site
- - - 100m Buffer
- ▭ Freshwater Wetland
- ▭ Grassland
- ▭ Woodland
- ▭ Managed Land



Note:  
Boundaries are not survey accurate.  
Although all reasonable care has been taken to ensure the information shown on this map is up to date and accurate, no guarantee is given that the information portrayed is free from error or omission. Please verify the accuracy of all information prior to use.

**FIGURE 3 - 1: VEGETATION MAP**

CLIENT Client  
SITE DETAILS Springfield Road Lochinvar  
DATE 12 June 2024



Firebird ecoSultants Pty Ltd  
ABN - 16 105 985 993  
Level 1, 146 Hunter Street, Newcastle NSW 2300  
P O Box 354 Newcastle NSW 2300



DISCLAIMER  
This document and the information shown shall remain the property of Firebird ecoSultants Pty Ltd. The document may only be used for the purpose for which it was supplied and in accordance with the terms of engagement for the commission. Unauthorised use of this document in any way is prohibited.



## 4 BUSHFIRE PROTECTION ASSESSMENT

### 4.1 Asset Protection Zones (APZ)

The PBP (RFS, 2019) guidelines has been used to determine the widths of the APZs required for habitable buildings within the site using the vegetation and slope data identified in Section 3-1 of this report.

The site lies within Maitland Local Government Area and therefore is assessed under a FDI rating of 100. Using the results from the Site Assessment (section 3-1 of this report) the deemed to satisfy APZ requirements for the proposed buildings within the site was determined using Table A1.12.2 in PBP (RFS, 2019). Refer to Table 4-1 and Figure 4-1 for required APZs for the proposed habitable buildings.

**Table 4-1: Recommended APZs for Proposed Dwellings**

Direction from Building Envelope	Vegetation Classification within 140m	Effective Slope (within 100m)	APZ to be Provided <sup>1</sup>	Comment
North	Freshwater Wetland	Upslope	5m APZ to the North.	Acceptable solution in accordance with PBP (RFS, 2019)
East	Managed Land	N/A	N/A	Acceptable solution in accordance with PBP (RFS, 2019)
South	Managed Land	N/A	N/A	Acceptable solution in accordance with PBP (RFS, 2019)
West	Managed Land followed by Grassland	Flat	10m APZ to the West, inclusive of Station Lane.	Acceptable solution in accordance with PBP (RFS, 2019)

<sup>1</sup> APZ as per Table A1.12.2 in PBP 2019



**Legend**

- █ Subject Site
- APZ

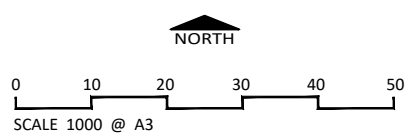


Note:  
Boundaries are not survey accurate.  
Although all reasonable care has been taken to ensure the information shown on this map is up to date and accurate, no guarantee is given that the information portrayed is free from error or omission. Please verify the accuracy of all information prior to use.

Google  
Nearmap

**FIGURE 4-1: ASSET PROTECTION ZONES**

CLIENT Client  
SITE DETAILS Springfield Road Lochinvar  
DATE 12 June 2024



Firebird ecoSultants Pty Ltd  
ABN - 16 105 985 993  
Level 1, 146 Hunter Street, Newcastle NSW 2300  
P O Box 354 Newcastle NSW 2300



DISCLAIMER  
This document and the information shown shall remain the property of Firebird ecoSultants Pty Ltd. The document may only be used for the purpose for which it was supplied and in accordance with the terms of engagement for the commission. Unauthorised use of this document in any way is prohibited.





---

## 5 DWELLING DESIGN & CONSTRUCTION

Building design and the materials used for construction of future dwellings should be chosen based on the information contained within AS3959-2018, and accordingly the designer / architect should be made aware of this recommendation. It may be necessary to have dwelling plans checked by the architect involved to ensure that the proposed dwellings meet the relevant Bushfire Attack Level (BAL) as detailed in AS3959-2018.

The determinations of the appropriate BAL are based upon parameters such as weather modelling, fire-line intensity, flame length calculations, as well as vegetation and fuel load analysis. The determination of the construction level is derived by assessing the:

- Relevant FFDI = 100
- Flame temperature
- Slope
- Vegetation classification; and
- Building location.

The following BAL, based on heat flux exposure thresholds, are used in the standard:

(a) **BAL – LOW**      The risk is considered to be **VERY LOW**

There is insufficient risk to warrant any specific construction requirements but there are still some risks.

(b) **BAL – 12.5**      The risk is considered to be **LOW**

There is a risk of ember attack.

The construction elements are expected to be exposed to a heat flux not greater than 12.5 k/m<sup>2</sup>.

(c) **BAL – 19** The risk is considered to be **MODERATE**

There is a risk of ember attack and burning debris ignited by wind borne embers and a likelihood of exposure to radiant heat.

The construction elements are expected to be exposed to a heat flux not greater than 19 kW/m<sup>2</sup>.

(d) **BAL-29** The risk is considered to be **HIGH**

There is an increased risk of ember attack and burning debris ignited by windborne embers and a likelihood of exposure to an increased level of radiant heat.



---

The construction elements are expected to be exposed to a heat flux no greater than 29 kW/m<sup>2</sup>.

(e) **BAL-40** The risk is considered to be **VERY HIGH**

There is much increased risk of ember attack and burning debris ignited by windborne embers, a likelihood of exposure to a high level of radiant heat and some likelihood of direct exposure to flames from the fire front.

The construction elements are expected to be exposed to a heat flux no greater than 40 kW/m<sup>2</sup>.

(f) **BAL-FZ** The risk is considered to be **EXTREME**

There is an extremely high risk of ember attack and burning debris ignited by windborne embers, a likelihood of exposure to an extreme level of radiant heat and direct exposure to flames from the fire front.

The construction elements are expected to be exposed to a heat flux greater than 40 kW/m<sup>2</sup>.

## 5.1 Determination of Bushfire Attack Levels

Using a FFDI of 100, the information relating to vegetation, slope and according to Table A1.12.5 of PBP 2019 that determined the appropriate BAL. The results from this bush fire risk assessment are detailed below in Table 5-1–Bush Fire Attack Assessment and Figure 5-1 BAL Map shows the vegetation.

**Table 5-1: Determination of BALs for the proposed units within site**

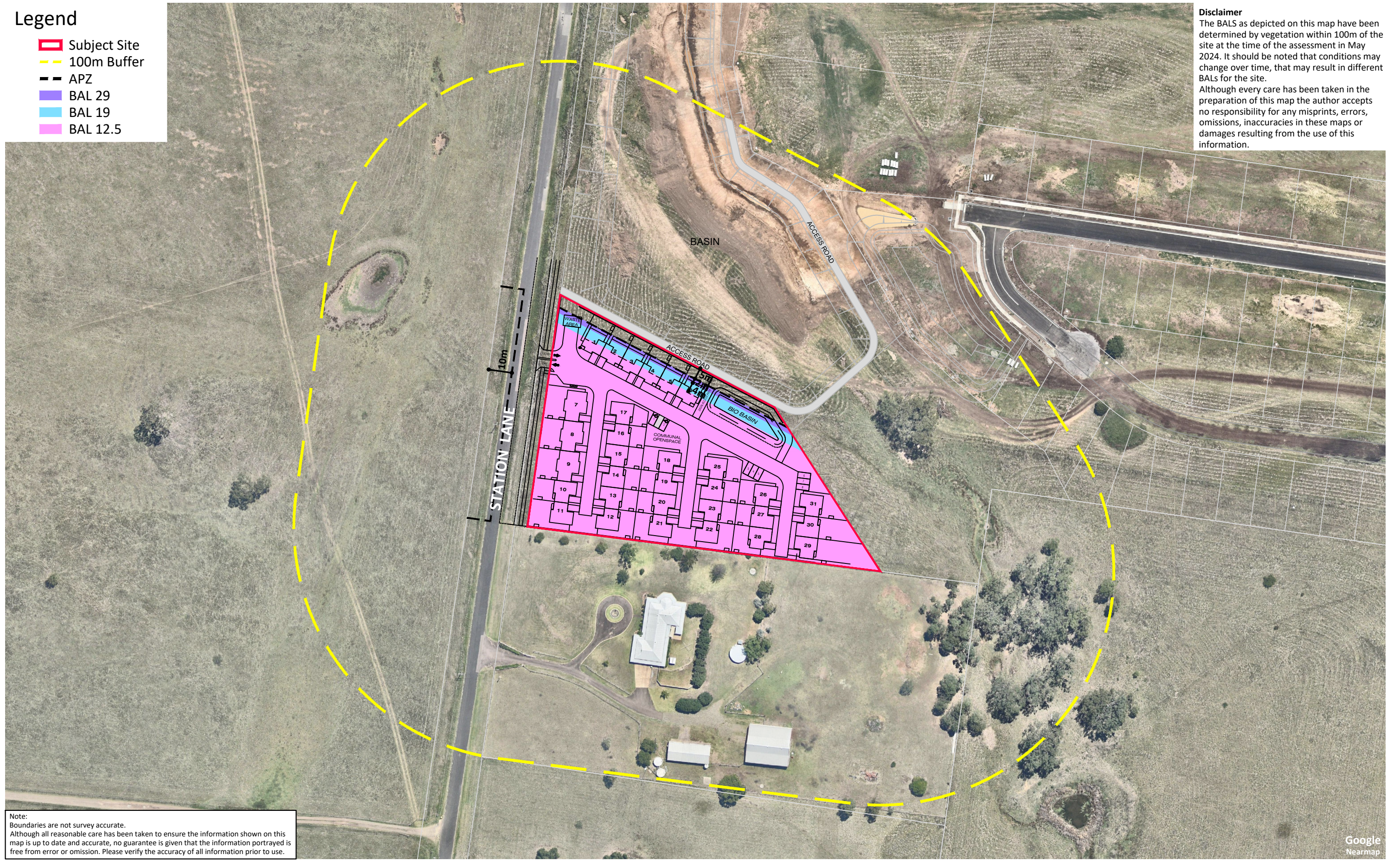
<b>Vegetation Type &amp; Direction</b>	<b>Separation Distance from vegetation</b>	<b>Bushfire Attack Level (BAL)</b>	<b>Construction Section</b>
Freshwater Wetland to the North	5-<7m	BAL-29	Sect 3 & 7 of AS3959
	7-<11m	BAL-19	Sect 3 & 6 of AS3959
	11-<100m	BAL-12.5	Sect 3 & 5 of AS3959
	>100m	BAL-LOW	No construction requirements
Managed Land to the East	>50m	BAL-LOW	No construction requirements
Managed Land to the South	>100m	BAL-LOW	No construction requirements
Grassland to the West	10-<15m	BAL-29	Sect 3 & 7 of AS3959
	15-<22m	BAL-19	Sect 3 & 6 of AS3959
	22-<50m	BAL-12.5	Sect 3 & 5 of AS3959
	>50m	BAL-LOW	No construction requirements



**Legend**

- Subject Site
- 100m Buffer
- APZ
- BAL 29
- BAL 19
- BAL 12.5

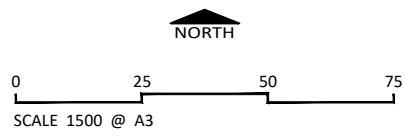
**Disclaimer**  
 The BALS as depicted on this map have been determined by vegetation within 100m of the site at the time of the assessment in May 2024. It should be noted that conditions may change over time, that may result in different BALS for the site.  
 Although every care has been taken in the preparation of this map the author accepts no responsibility for any misprints, errors, omissions, inaccuracies in these maps or damages resulting from the use of this information.



**Note:**  
 Boundaries are not survey accurate.  
 Although all reasonable care has been taken to ensure the information shown on this map is up to date and accurate, no guarantee is given that the information portrayed is free from error or omission. Please verify the accuracy of all information prior to use.

**FIGURE 5 - 1: BUSHFIRE ATTACK LEVELS**

**CLIENT** Client  
**SITE DETAILS** Springfield Road Lochinvar  
**DATE** 12 June 2024



Firebird ecoSultants Pty Ltd  
 ABN - 16 105 985 993  
 Level 1, 146 Hunter Street, Newcastle NSW 2300  
 P O Box 354 Newcastle NSW 2300



**DISCLAIMER**  
 This document and the information shown shall remain the property of Firebird ecoSultants Pty Ltd. The document may only be used for the purpose for which it was supplied and in accordance with the terms of engagement for the commission. Unauthorised use of this document in any way is prohibited.





## 6 COMPLIANCE

The proposal is for a residential strata subdivision and associated units and therefore development standards apply. Table 5-1 details the proposed compliance with Development Standards for Residential and Rural Residential Subdivisions.

**Table 6-1: Proposed Strata Subdivision and Residential Unit Development Compliance with Development Standards**

Acceptable Solutions	Performance Criteria	Compliance with Performance Criteria
<b>Asset Protection Zones</b>		
> APZs are provided in accordance with Tables A1.12.2 and A1.12.3 based on the FFDI.	potential building footprints must not be exposed to radiant heat levels exceeding 29 kW/m <sup>2</sup> on each proposed lot.	<b>Complies with Acceptable Solution –</b> APZs for the site have been provided in accordance with A1.12.2.
> APZs are managed in accordance with the requirements of Appendix 4.	APZs are managed and maintained to prevent the spread of a fire towards the building.	<b>Complies with Acceptable Solution –</b> APZs on site are to be managed in accordance with Appendix 4 of the PBP 2019.
> APZs are wholly within the boundaries of the development site	the APZs is provided in perpetuity	<b>Complies with Acceptable Solution –</b> APZs on site occur entirely within the boundary of the site.
> APZs are located on lands with a slope less than 18 degrees.	APZ maintenance is practical, soil stability is not compromised and the potential for crown fires is minimised.	<b>Complies with Acceptable Solution –</b> APZs on site occur over slopes <18°.
<b>Landscaping</b>		
> landscaping is in accordance with Appendix 4; and fencing is constructed in accordance with section 7.6.	landscaping is designed and managed to minimise flame contact and radiant heat to buildings, and the potential for wind-driven embers to cause ignitions.	<b>Complies with Acceptable Solution –</b> All landscaping within the site will meet the requirements of the acceptable solution.



## Access (General Requirements)

<ul style="list-style-type: none"> <li>› property access roads are two-wheel drive, all-weather roads;</li> <li>› perimeter roads are provided for residential subdivisions of three or more allotments;</li> <li>› subdivisions of three or more allotments have more than one access in and out of the development;</li> <li>› traffic management devices are constructed to not prohibit access by emergency services vehicles;</li> <li>› maximum grades for sealed roads do not exceed 15 degrees and an average grade of not more than 10 degrees or other gradient specified by road design standards, whichever is the lesser gradient;</li> <li>› all roads are through roads;</li> <li>› dead end roads are not recommended, but if unavoidable, are not more than 200 metres in length, incorporate a minimum 12 metres outer radius turning circle, and are clearly sign posted as a dead end;</li> <li>› where kerb and guttering is provided on perimeter roads, roll top kerbing should be used to the hazard side of the road;</li> <li>› where access/egress can only be achieved through forest, woodland and heath</li> </ul>	<p>firefighting vehicles are provided with safe, all-weather access to structures.</p>	<p><b>Complies with Performance Criteria –</b>          The site has direct access to the Public Road System, with all units have internal access, with the internal access connecting to Station Lane and the remainder of lots being linked to the road system to be constructed. Additional access and egress are accessible for firefighting vehicles via the area of land to the north to be accessed for managing the basin.</p>
--	--	--



<p>vegetation, secondary access shall be provided to an alternate point on the existing public road system; and</p> <p>one way only public access roads are no less than 3.5 metres wide and have designated parking bays with hydrants located outside of these areas to ensure accessibility to reticulated water for fire suppression.</p>		
<p>&gt; the capacity of perimeter and non-perimeter road surfaces and any bridges/causeways is sufficient to carry fully loaded firefighting vehicles (up to 23 tonnes); bridges/causeways are to clearly indicate load rating.</p>	<p>the capacity of access roads is adequate for firefighting vehicles.</p>	<p><b>Complies with Acceptable Solution –</b> All roads within the site are designed to meet the requirements of the acceptable solution.</p>
<p>&gt; hydrants are located outside of parking reserves and road carriageways to ensure accessibility to reticulated water for fire suppression;</p> <p>&gt; hydrants are provided in accordance with the relevant clauses of AS 2419.1:2017 - Fire hydrant installations System design, installation and commissioning; and</p> <p>there is suitable access for a Category 1 fire appliance to within 4m of the static water supply where no reticulated supply is available.</p>	<p>there is appropriate access to water supply.</p>	<p><b>Complies with Acceptable Solution –</b> Hydrants are to be positioned appropriately across the site.</p>





## Perimeter Roads

<ul style="list-style-type: none"> <li>› are two-way sealed roads;</li> <li>› minimum 8m carriageway width kerb to kerb;</li> <li>› parking is provided outside of the carriageway width;</li> <li>› hydrants are located clear of parking areas;</li> <li>› are through roads, and these are linked to the internal road system at an interval of no greater than 500m;</li> <li>› curves of roads have a minimum inner radius of 6m;</li> <li>› the maximum grade road is 15 degrees and average grade of not more than 10 degrees;</li> <li>› the road crossfall does not exceed 3 degrees; and</li> </ul> <p style="margin-left: 40px;">a minimum vertical clearance of 4m to any overhanging obstructions, including tree branches, is provided.</p>	<p>access roads are designed to allow safe access and egress for firefighting vehicles while residents are evacuating as well as providing a safe operational environment for emergency service personnel during firefighting and emergency management on the interface.</p>	<p><b>Complies with Performance Criteria –</b> All access roads are designed to allow safe access and egress for firefighting vehicles and provide a safe operational environment for emergency service personnel through direct linkage to the public roads system to the North and West. Furthermore, the road system runs in the direction away from the bushfire hazard vegetation. Additional access and egress is accessible for firefighting vehicles via the access road around the proposed drainage road to the north, providing further emergency access routes.</p>
---	--	---

## Non-Perimeter Roads

<ul style="list-style-type: none"> <li>› minimum 5.5m carriageway width kerb to kerb;</li> <li>› parking is provided outside of the carriageway width;</li> <li>› hydrants are located clear of parking areas;</li> </ul>	<p>access roads are designed to allow safe access and egress for firefighting vehicles while residents are evacuating.</p>	<p><b>Complies with Acceptable Solution –</b> All non-perimeter access roads to the site are designed to meet the requirements of the acceptable solution.</p>
---	--	--



<ul style="list-style-type: none"> <li>&gt; roads are through roads, and these are linked to the internal road system at an interval of no greater than 500m;</li> <li>&gt; curves of roads have a minimum inner radius of 6m;</li> <li>&gt; the road crossfall does not exceed 3 degrees; and             <ul style="list-style-type: none"> <li>a minimum vertical clearance of 4m to any overhanging obstructions, including tree branches, is provided.</li> </ul> </li> </ul>		
<h3>Property Access</h3>		
<ul style="list-style-type: none"> <li>&gt; There are no specific access requirements in an urban area where an unobstructed path (no greater than 70m) is provided between the most distant external part of the proposed dwelling and the nearest part of the public access road (where the road speed limit is not greater than 70kph) that supports the operational use of emergency firefighting vehicles.</li> </ul> <p><b>In circumstances where this cannot occur, the following requirements apply:</b></p> <ul style="list-style-type: none"> <li>&gt; minimum 4m carriageway width;</li> <li>&gt; in forest, woodland and heath situations, rural property access roads have passing bays every 200m that are 20m long by 2m wide, making a minimum trafficable width of 6m at the passing bay;</li> </ul>	<p>firefighting vehicles can access the dwelling and exit the property safely.</p>	<p><b>Complies with Acceptable Solution –</b> All future lots are to be connected to a public road by a driveway &lt;70m</p>



---

<ul style="list-style-type: none"><li>› a minimum vertical clearance of 4m to any overhanging obstructions, including tree branches;</li><li>› provide a suitable turning area in accordance with Appendix 3;</li><li>› curves have a minimum inner radius of 6m and are minimal in number to allow for rapid access and egress;</li><li>› the minimum distance between inner and outer curves is 6m;</li><li>› the crossfall is not more than 10 degrees;</li><li>› maximum grades for sealed roads do not exceed 15 degrees and not more than 10 degrees for unsealed roads; and</li><li>› a development comprising more than three dwellings has access by dedication of a road and not by right of way.</li></ul> <p><b>Note: Some short constrictions in the access may be accepted where they are not less than 3.5m wide, extend for no more than 30m and where the obstruction cannot be reasonably avoided or removed. The gradients applicable to public roads also apply to community style development property access roads in addition to the above.</b></p>		
--	--	--



## Water Supplies

<ul style="list-style-type: none"> <li>› reticulated water is to be provided to the development where available;</li> <li>› a static water and hydrant supply is provided for non-reticulated developments or where reticulated water supply cannot be guaranteed; and</li> </ul> <p style="padding-left: 40px;">static water supplies shall comply with Table 5.3d.</p>	<p>adequate water supplies are provided for firefighting purposes.</p>	<p><b>Complies with Acceptable Solution –</b> All lots are to be connected to reticulated water.</p>
<ul style="list-style-type: none"> <li>› fire hydrant, spacing, design and sizing complies with the relevant clauses of Australian Standard AS 2419.1:2017;</li> <li>› hydrants are not located within any road carriageway; and</li> <li>› reticulated water supply to urban subdivisions uses a ring main system for areas with perimeter roads.</li> </ul>	<p>Water supplies are located at regular intervals; and</p> <p>the water supply is accessible and reliable for firefighting operations.</p>	<p><b>Can Comply with Acceptable Solution –</b> Hydrants are to be positioned appropriately across the site.</p>
<ul style="list-style-type: none"> <li>› fire hydrant flows and pressures comply with the relevant clauses of AS 2419.1:2017.</li> </ul>	<p>flows and pressure are appropriate.</p>	<p><b>Complies with Acceptable Solution –</b> Flows and pressure assumed compliant</p>
<ul style="list-style-type: none"> <li>› all above-ground water service pipes are metal, including and up to any taps; and</li> </ul> <p>above-ground water storage tanks shall be of concrete or metal.</p>	<p>the integrity of the water supply is maintained.</p>	<p><b>Complies with Acceptable Solution –</b> All above ground water service pipes will meet the requirements.</p>



## Electricity Services

<ul style="list-style-type: none"> <li>&gt; where practicable, electrical transmission lines are underground;</li> <li>&gt; where overhead, electrical transmission             <ul style="list-style-type: none"> <li>&gt; lines are proposed as follows: lines are installed with short pole spacing of 30m, unless crossing gullies, gorges or riparian areas; and</li> </ul> <p>no part of a tree is closer to a power line than the distance set out in ISSC3 Guideline for Managing Vegetation Near Power Lines.</p> </li> </ul>	<p>location of electricity services limits the possibility of ignition of surrounding bush land or the fabric of buildings.</p>	<p><b>Complies with Acceptable Solution –</b> Electricity will be installed in accordance with the acceptable solution.</p>
--	---	---

## Gas Services

<ul style="list-style-type: none"> <li>&gt; reticulated or bottled gas is installed and maintained in accordance with AS/NZS 1596:2014 - The storage and handling of LP Gas, the requirements of relevant authorities, and metal piping is used;</li> <li>&gt; all fixed gas cylinders are kept clear of all flammable materials to a distance of 10m and shielded on the hazard side;</li> <li>&gt; connections to and from gas cylinders are metal;</li> <li>&gt; polymer-sheathed flexible gas supply lines are not used; and</li> <li>&gt; above-ground gas service pipes are metal, including and up to any outlets.</li> </ul>	<p>location and design of gas services will not lead to ignition of surrounding bushland or the fabric of buildings.</p>	<p><b>Complies with Acceptable Solution –</b> All gas will be supplied to the units in accordance with the acceptable solution.</p>
--	--	---

## 7 CONCLUSION & RECOMMENDATIONS

In summary, a Bushfire Risk Assessment has been undertaken for a proposed strata subdivision and residential unit development. The report forms part of the supporting documentation for a Development Application (DA) to be submitted to MCC.

If the recommendations contained within this report are duly considered and incorporated, it is considered that the fire hazard present is containable to a level necessary to provide an adequate level of protection to life and property on the subdivision. In summary, the following is recommended to enable the proposal to meet the relevant legislative requirements for the proposed strata subdivision:

- To achieve a Bushfire Attack Level (BAL) of BAL-29 or less, the following land is to be managed as an APZ, which is made up of an Inner Protection Area (IPA) and Outer Protection Area (OPA):
  - North for a distance of 5m as an IPA, and
  - West for a distance of 10m as an IPA inclusive of Station Lane.

These distances are to be managed as described under 'Planning for Bushfire Protection (Appendix 4 – Asset Protection Zone Requirements)' and the document titled 'Standards for Asset Protection Zones'.

- Based on the APZs provided above, the proposed multi-unit development will be able to achieve a BAL rating of BAL-29 or less.
- Access is to be provided to the site by a proposed new road which runs off station lane. Additional access and egress can be provided for firefighting vehicles to the North via the managed land which will be used in future for access for management around the basin.

Provided the recommendations stated above are implemented in full Firebird ecoSultants Pty Ltd is of the opinion that the proposed development is able to meet the aims and objectives of PBP (RFS, 2019).



---

## 8 BIBLIOGRAPHY

Department of Bush Fire Services (undated). *Bush Fire Readiness Checklist*.

NSWFB (1988). *Hazard Reduction for the Protection of Buildings in Bushland Areas*. New South Wales Fire Brigades.

NSW Rural Fire Service (1997). *Bush Fire Protection for New and Existing Rural Properties*. September 1997, NSW Government.

NSW Rural Fire Service (2006). *Planning for Bushfire Protection – A Guide for Councils, Planners, Fire Authorities, Developers and Home Owners*.

NSW Rural Fire Service (2019). *Planning for Bushfire Protection – A Guide for Councils, Planners, Fire Authorities, Developers and Home Owners*.

NSW Rural Fire Service (2005). Standards for Asset Protection Zones. NSW Rural Fire Service.

NSW Rural Fire Service (2002). *Circular 16/2002: Amendments to the Rural Fires Act 1997 – hazard reduction and planning requirements*.

Planning NSW & NSW Rural Fire Service (2001). *Planning for Bushfire Protection – A Guide for Councils, Planners, Fire Authorities, Developers and Home Owners*.

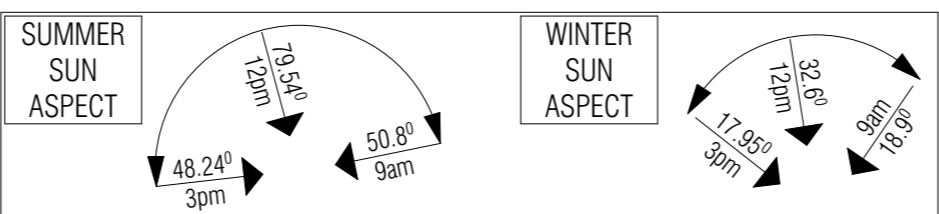
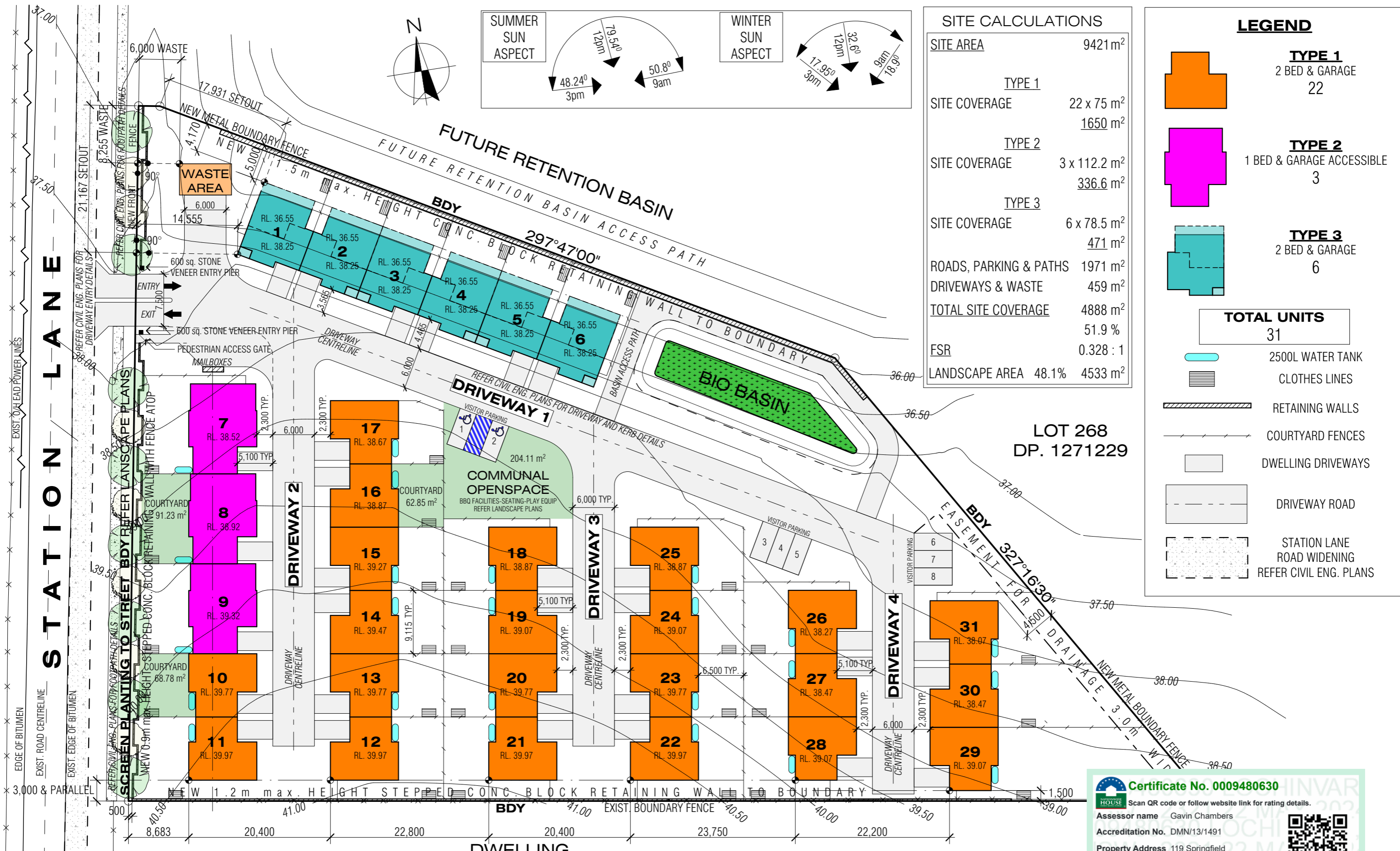
Ramsay, GC and Dawkins, D (1993). *Building in Bushfire-prone Areas – Information and Advice*. CSIRO and Standards Australia.

*Rural Fires and Environmental Assessment Legislation Amendment Act 2002*.

Standards Australia (2018). *AS 3959 – 2018: Construction of Buildings in Bushfire-prone Areas*.

# **APPENDIX A      PROPOSED SITE PLANS**





**SITE CALCULATIONS**

SITE AREA	9421 m <sup>2</sup>
TYPE 1	
SITE COVERAGE	22 x 75 m <sup>2</sup> 1650 m <sup>2</sup>
TYPE 2	
SITE COVERAGE	3 x 112.2 m <sup>2</sup> 336.6 m <sup>2</sup>
TYPE 3	
SITE COVERAGE	6 x 78.5 m <sup>2</sup> 471 m <sup>2</sup>
ROADS, PARKING & PATHS	1971 m <sup>2</sup>
DRIVEWAYS & WASTE	459 m <sup>2</sup>
TOTAL SITE COVERAGE	4888 m <sup>2</sup>
FSR	51.9 %
LANDSCAPE AREA	0.328 : 1 48.1% 4533 m <sup>2</sup>

**LEGEND**

- TYPE 1** 2 BED & GARAGE 22
- TYPE 2** 1 BED & GARAGE ACCESSIBLE 3
- TYPE 3** 2 BED & GARAGE 6

**TOTAL UNITS** 31

- 2500L WATER TANK
- CLOTHES LINES
- RETAINING WALLS
- COURTYARD FENCES
- DWELLING DRIVEWAYS
- DRIVEWAY ROAD
- STATION LANE ROAD WIDENING REFER CIVIL ENG. PLANS

**SITE PLAN**  
SCALE 1 : 500

**DWELLING LOT 32**  
DP. 776491

**Certificate No. 0009480630**

Assessor name Gavin Chambers  
Accreditation No. DMN/13/1491  
Property Address 119 Springfield Drive, Lochinvar NSW, 2321

hstar.com.au/QR/Generate?p=CeZFGGUXI

**BLACKDRAFT**  
architectural design  
blackdraft333@gmail.com  
mob 0449 75 88 66 abn 53 392 045 355

**PROJECT** RESIDENTIAL UNIT DEVELOPMENT  
**LOCATION** No. 119 Lot 268 DP.1271229 SPRINGFIELD DRIVE, LOCHINVAR

**CLIENT** TOCAE  
**DRAWING** SITE PLAN

**DRAWN** MLB  
**SCALE** AS SHOWN

**DATE** 01/06/24  
**ISSUE** DA

**DWG No.** 003 / 015  
**JOB No.** 21 01

**ISSUE** **DATE** **AMENDMENT**

# **APPENDIX B      ASSET PROTECTION ZONES**

# APPENDIX 4

## ASSET PROTECTION ZONE REQUIREMENTS

In combination with other BPMS, a bush fire hazard can be reduced by implementing simple steps to reduce vegetation levels. This can be done by designing and managing landscaping to implement an APZ around the property.

Careful attention should be paid to species selection, their location relative to their flammability, minimising continuity of vegetation (horizontally and vertically), and ongoing maintenance to remove flammable fuels (leaf litter, twigs and debris).

This Appendix sets the standards which need to be met within an APZ.

### A4.1 Asset Protection Zones

An APZ is a fuel-reduced area surrounding a building or structure. It is located between the building or structure and the bush fire hazard.

For a complete guide to APZs and landscaping, download the NSW RFS document *Standards for Asset Protection Zones* at the NSW RFS Website [www.rfs.nsw.gov.au](http://www.rfs.nsw.gov.au).

An APZ provides:

- a buffer zone between a bush fire hazard and an asset;
- an area of reduced bush fire fuel that allows for suppression of fire;
- an area from which backburning or hazard reduction can be conducted; and
- an area which allows emergency services access and provides a relatively safe area for firefighters and home owners to defend their property.

Bush fire fuels should be minimised within an APZ. This is so that the vegetation within the zone does not provide a path for the spread of fire to the building, either from the ground level or through the tree canopy.

An APZ, if designed correctly and maintained regularly, will reduce the risk of:

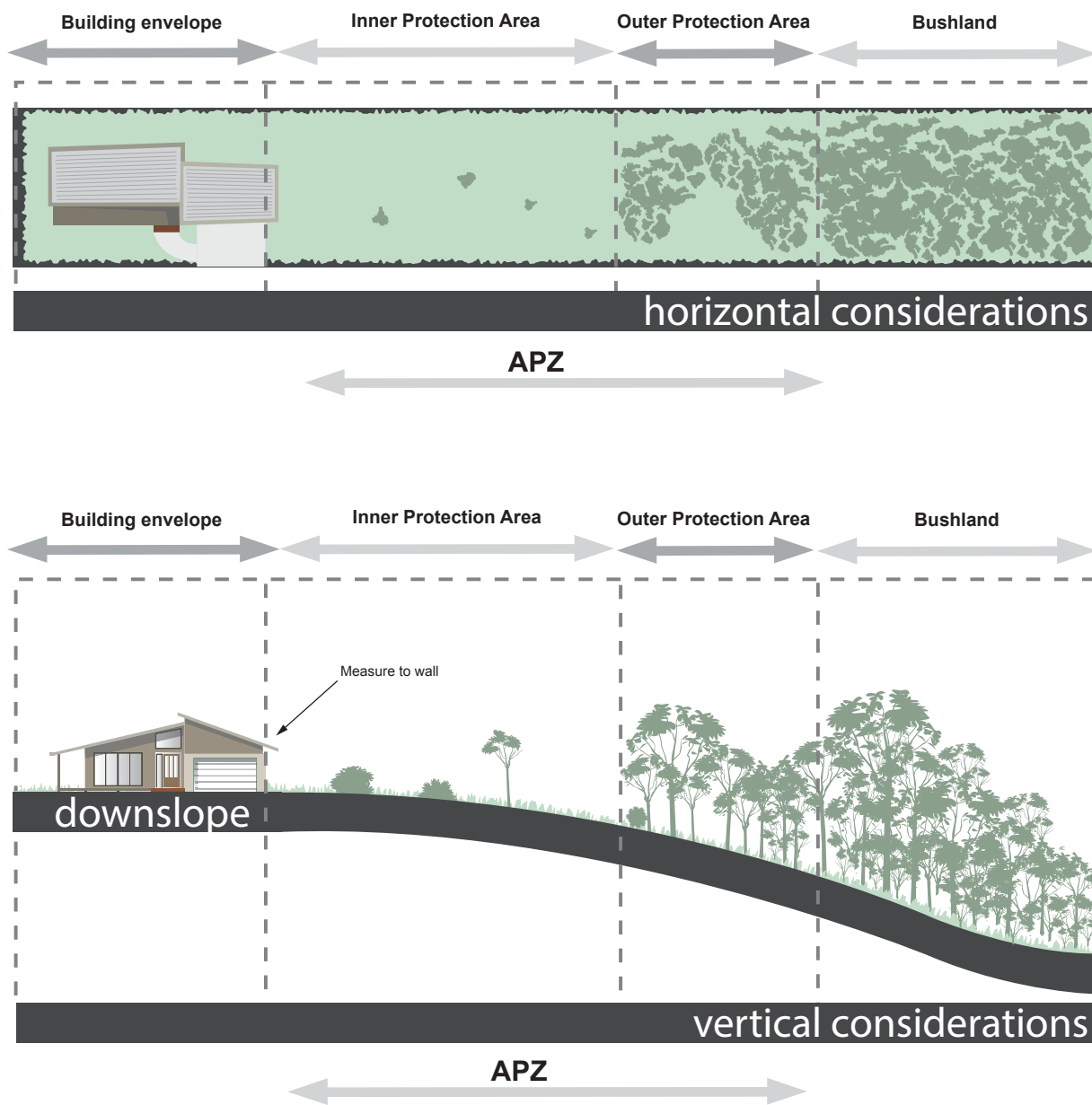
- direct flame contact on the building;
- damage to the building asset from intense radiant heat; and
- ember attack.

The methodology for calculating the required APZ distance is contained within Appendix 1. The width of the APZ required will depend upon the development type and bush fire threat. APZs for new development are set out within Chapters 5, 6 and 7 of this document.

In forest vegetation, the APZ can be made up of an Inner Protection Area (IPA) and an Outer Protection Area (OPA).

**Figure A4.1**

Typical Inner and Outer Protection Areas.



#### A4.1.1 Inner Protection Areas (IPAs)

The IPA is the area closest to the building and creates a fuel-managed area which can minimise the impact of direct flame contact and radiant heat on the development and act as a defensible space. Vegetation within the IPA should be kept to a minimum level. Litter fuels within the IPA should be kept below 1cm in height and be discontinuous.

In practical terms the IPA is typically the curtilage around the building, consisting of a mown lawn and well maintained gardens.

When establishing and maintaining an IPA the following requirements apply:

##### Trees

- tree canopy cover should be less than 15% at maturity;
- trees at maturity should not touch or overhang the building;
- lower limbs should be removed up to a height of 2m above the ground;
- tree canopies should be separated by 2 to 5m; and
- preference should be given to smooth barked and evergreen trees.

##### Shrubs

- create large discontinuities or gaps in the vegetation to slow down or break the progress of fire towards buildings should be provided;
- shrubs should not be located under trees;
- shrubs should not form more than 10% ground cover; and
- clumps of shrubs should be separated from exposed windows and doors by a distance of at least twice the height of the vegetation.

##### Grass

- grass should be kept mown (as a guide grass should be kept to no more than 100mm in height); and
- leaves and vegetation debris should be removed.

#### A4.1.2 Outer Protection Areas (OPAs)

An OPA is located between the IPA and the unmanaged vegetation. It is an area where there is maintenance of the understorey and some separation in the canopy. The reduction of fuel in this area aims to decrease the intensity of an approaching fire and restricts the potential for fire spread from crowns; reducing the level of direct flame, radiant heat and ember attack on the IPA.

Because of the nature of an OPA, they are only applicable in forest vegetation.

When establishing and maintaining an OPA the following requirements apply:

##### Trees

- tree canopy cover should be less than 30%; and
- canopies should be separated by 2 to 5m.

##### Shrubs

- shrubs should not form a continuous canopy; and
- shrubs should form no more than 20% of ground cover.

##### Grass

- grass should be kept mown to a height of less than 100mm; and
- leaf and other debris should be removed.

An APZ should be maintained in perpetuity to ensure ongoing protection from the impact of bush fires. Maintenance of the IPA and OPA as described above should be undertaken regularly, particularly in advance of the bush fire season.