



Maitland Town Hall

Let this historic venue serve as the backdrop and perfect destination for your next boardroom meeting, exhibition, theatre show, conference, wedding or event.

maitland
CITY COUNCIL

Introduction

Welcome to Maitland, a city that blends rich heritage with dynamic growth, where family-friendly charm and a welcoming community await you. Nestled on the banks of the Hunter River and centrally located in the heart of the Hunter region, Maitland offers the perfect combination of city convenience and warm country charm.

The newly refurbished Maitland Town Hall is located in Central Maitland and stands as a beacon of elegance and sophistication, serving as the perfect venue for your most prestigious events.

From theatrical performances and lavish weddings, to captivating receptions, productive board meetings, exhibitions, conferences, events and chic cocktail parties, Town Hall sets the stage for countless unforgettable moments. Prepare to be captivated by the exquisite architecture and the seamless integration of modern amenities within this historical gem.



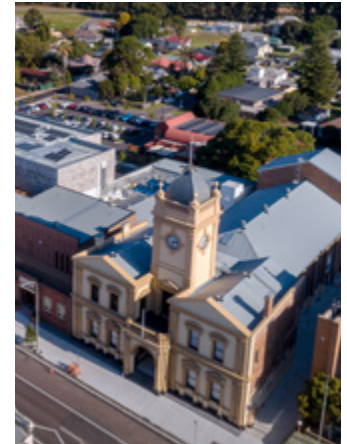
Venue at a glance

With a grand auditorium, featuring a proscenium arch stage, four additional breakout rooms and foyer area, flexible set ups, state of the art equipment and a dedicated team motivated to ensure your event is a success, Maitland Town Hall can cater for a variety of events.

Stepping into the Main Hall is like stepping back in time, with the space embracing the grace and charm of a bygone era while seamlessly blending with modern amenities. Immerse yourself in its timeless beauty as you discover a versatile setting that can easily accommodate up to 320 guests theatre style or 208 in a formal setting, complemented with breakroom options, a large stage area, dressing rooms and a green room, making this the perfect venue for concerts, performances, exhibitions and tradeshows.

Our team work with you to confirm a floor plan and set up prior to your arrival. The following equipment is available to hirers of the Maitland Town Hall.

- 28 Round tables
- 60 Rectangular Tables
- 320 chairs
- 12 Bar Tables
- 80 Bar Stools



Location, parking and access

Representing a new era for Maitland Town Hall, entry to the venue is now via the Maitland Administration Centre, 263 High Street Maitland, NSW.

The building is accessible from both High Street and the Maitland Administration Centre car park (entry via Devonshire Street) on the day of your event, via the large glass automatic doors.



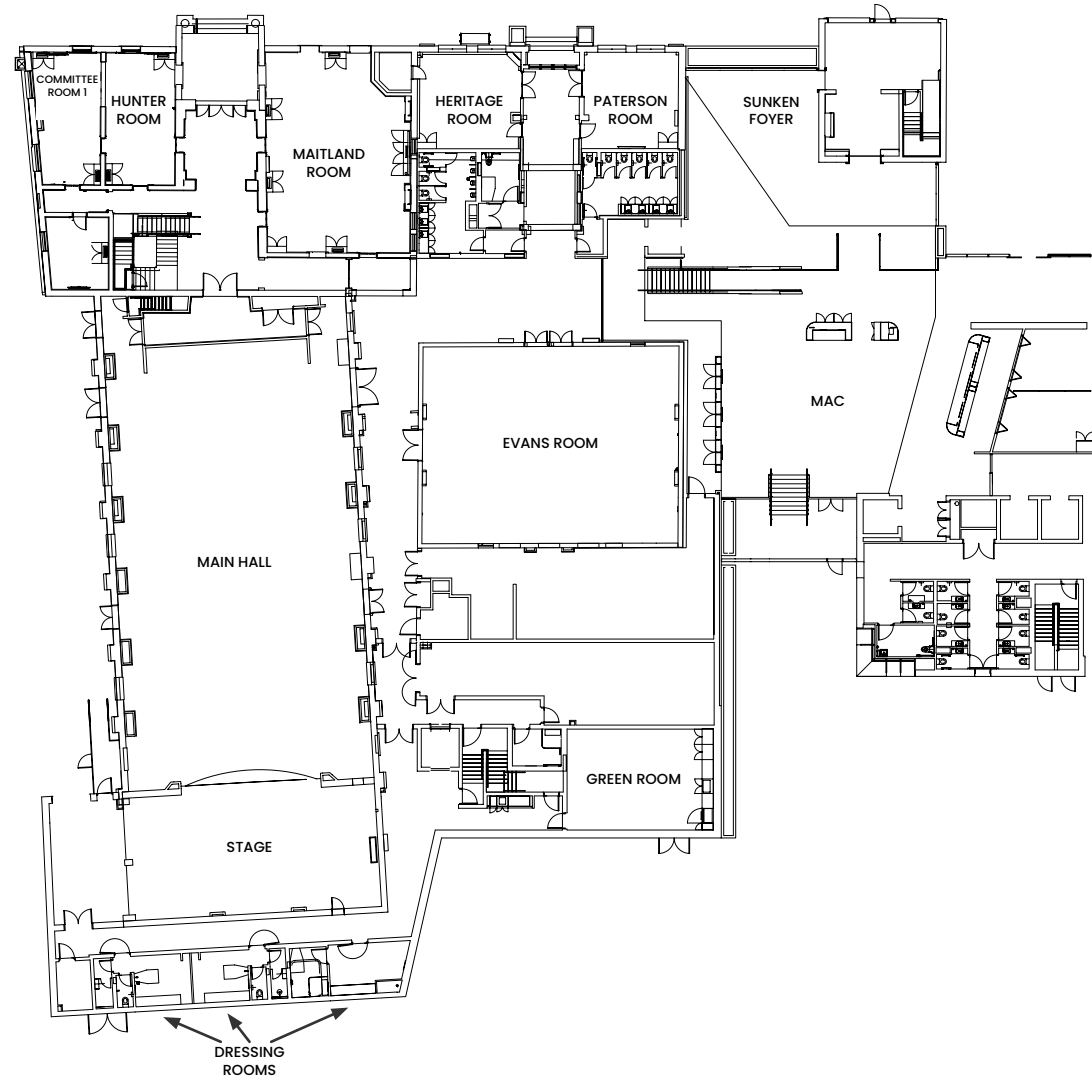
The Maitland Administration Centre car park is available to guests of Maitland Town Hall of an evening and on weekends. Guests can access the building from the surrounding public parking when attending daytime events.

Located in Central Maitland, only two hours north of Sydney and 35 minutes from Newcastle Airport (NTL), Maitland is easily accessible to conference delegates from across the state. Newcastle Airport provides a direct connection to Sydney, Dubbo, Taree, Coffs Harbour and Ballina/Byron Bay. Interstate flights also make Maitland accessible from the Gold Coast, Cairns, Sunshine Coast, The Whitsundays, Brisbane, Canberra and Melbourne.

With a train station located in the city centre, Maitland is also accessible via rail from the north and south.



Venue footprint



Audio

Scion Audio and Events are our experts at all things audio, visual and lighting when it comes to hire of the Main Hall. Please contact them directly to discuss your needs.

Scion

02 4961 3733

scion@scionaudio.com.au

scionaudio.com.au

Signage and Decorations

Any signs or decorations in the Town Hall or Meeting Rooms are to be free standing or on tables. There can be no items fixed to any walls within the venue. Venue hire does not include stationery, this must be supplied by the hirer if required. The venue has one whiteboard, 1200mm W x 900mm H. Please confirm availability when booking.



Catering

We understand the importance of selecting the right cuisine for your event and as such, catering at the Maitland Town Hall involves a panel of approved caterers. Hirers can contact the catering companies directly and arrange for menu packages for each event.

Sprout Catering & Kitchen

Jacque and Tom Brown
02 4032 7920
0410 409 746
info@sproutcatering.com.au
sproutcatering.com.au

Little Castro Catering

Damian Beric
0497 706 243
info@littlecastrocatering.com.au

Eat Me Catering

Amanda Suffell
0421 502 299
dine@eatmecatering.com.au
eatmecatering.com.au



Venue Capacity

FLOOR SIZE	BOARDROOM	THEATRE	BANQUET	U-SHAPE	CLASSROOM	CABARET	COCKTAIL
Main Hall							
469m ²	300	320	208	78	80	156	300
Evans Room							
200m ²	30	182	96	50	50	72	150
Maitland Room							
110m ²	30	55	48	29	24	24	50
Heritage Room							
34m ²	10	25	8	10	8	6	
Paterson Room							
35m ²	8	25	8	12	8	6	
Hunter Room							
36m ²	12	25	8	6	8	6	
Committee Room 1							
36m ²	10	25	8	6	8	6	
Sunken Foyer							
148m ²		50					100



Main Hall

The stunning Main Hall embraces the grace and charm of the bygone era while seamlessly blending with modern amenities, making it the ideal space for large functions, weddings, conferences, presentations, live shows, performances and concerts.

Discover a versatile setting that can easily accommodate up to 320 guests theatre style or 208 in a formal banquet setting, complemented with breakout room options, a proscenium arch stage, dressing rooms and a green room.



FLOOR SIZE	STAGE SIZE	BOARDROOM	THEATRE	BANQUET	U-SHAPE	CLASSROOM	CABARET	COCKTAIL
Main Hall								
469m ²	180m ²	300 dining 50 single table	320 floor seating 316 with floor seating and retractable seating	208 no dancefloor	78	80	156	300



Dressing Rooms and Green Room

Our backstage area includes three dressing rooms, included in the hire of the Main Hall. Dressing Room 1 is accessible. Dressing Room 2 & 3 are one space but can be divided to make two smaller dressing rooms.

The Green Room can be added to your Main Hall booking for an additional fee. Also located backstage, this space features a full size fridge, microwave, dishwasher and hot/cold water tap, and provides the perfect chillout area for pre and post performance fun.



Evans Room

The Evans Room is a suitable space for smaller, intimate and private functions, such as conferences, dinner parties, presentations, cocktail parties and weddings.

The Evans Room is located adjacent to the Main Hall and is often a popular choice for hirers to use as a breakout room for large conferences, offer additional services such as food and beverage, or use as another dressing room.

AV Included

The room includes a projector screen that you can connect a laptop to for a presentation. There is also a microphone, lapel mic and clicker for presentations.

**Please note, this room is not suitable for TEAMS Meetings.*



FLOOR SIZE	BOARDROOM	THEATRE	BANQUET	U-SHAPE	CLASSROOM	CABARET	COCKTAIL
Evans Room							
200m ²	30	182	96	50	50	72	150



Maitland Room

The Maitland Room is suitable as a conference space, training room or meeting room with the option for larger conferences to use this space as a breakout area. The Maitland Room is the second largest of the meeting spaces at 110 square metres. This versatile space comfortably seats up to 55 guests and is ideal for cocktail parties, banquet style events or corporate functions.

AV Included

The room includes a projector screen that you can connect a laptop to for a presentation. There is also a microphone, lapel mic and clicker for presentations.

**Please note, this room is not suitable for TEAMS Meetings.*



FLOOR SIZE	BOARDROOM	THEATRE	BANQUET	U-SHAPE	CLASSROOM	CABARET	COCKTAIL
Maitland Room							
110m ²	30	55	48	29	24	36	50



Meeting Rooms

The Maitland Town Hall features four meeting rooms; Heritage Room, Paterson Room, Hunter Room and Committee Room.

These meeting rooms are available for smaller scale events including training days or break out sessions for larger conferences.

Each meeting room features a commbox that you can connect a laptop to for a presentation and is suitable for TEAMS Meetings.



FLOOR SIZE	BOARDROOM	THEATRE	BANQUET	U-SHAPE	CLASSROOM	CABARET
Heritage Room						
34m ²	10	25	8	10	8	6
Paterson Room						
35m ²	8	25	8	12	8	6
Hunter Room						
36m ²	12	25	8	6	8	6
Committee Room 1						
36m ²	10	25	8	6	8	6



Sunken Foyer

Welcome your guests to Maitland Town Hall via the Maitland Administration Centre foyer and sunken foyer space, our arrival destination for hosting sophisticated gatherings or mid event breakout functions. Offering the perfect blend of heritage charm and contemporary flair, the space also features a large projection screen to showcase images, videos or welcome messages for your event.



FLOOR SIZE



THEATRE



COCKTAIL



Sunken Foyer

148m²

50

100m





02 4934 9700

263 High Street, Maitland NSW 2320

recreation@maitland.nsw.gov.au

maitland.nsw.gov.au/maitland-town-hall

maitland
CITY COUNCIL