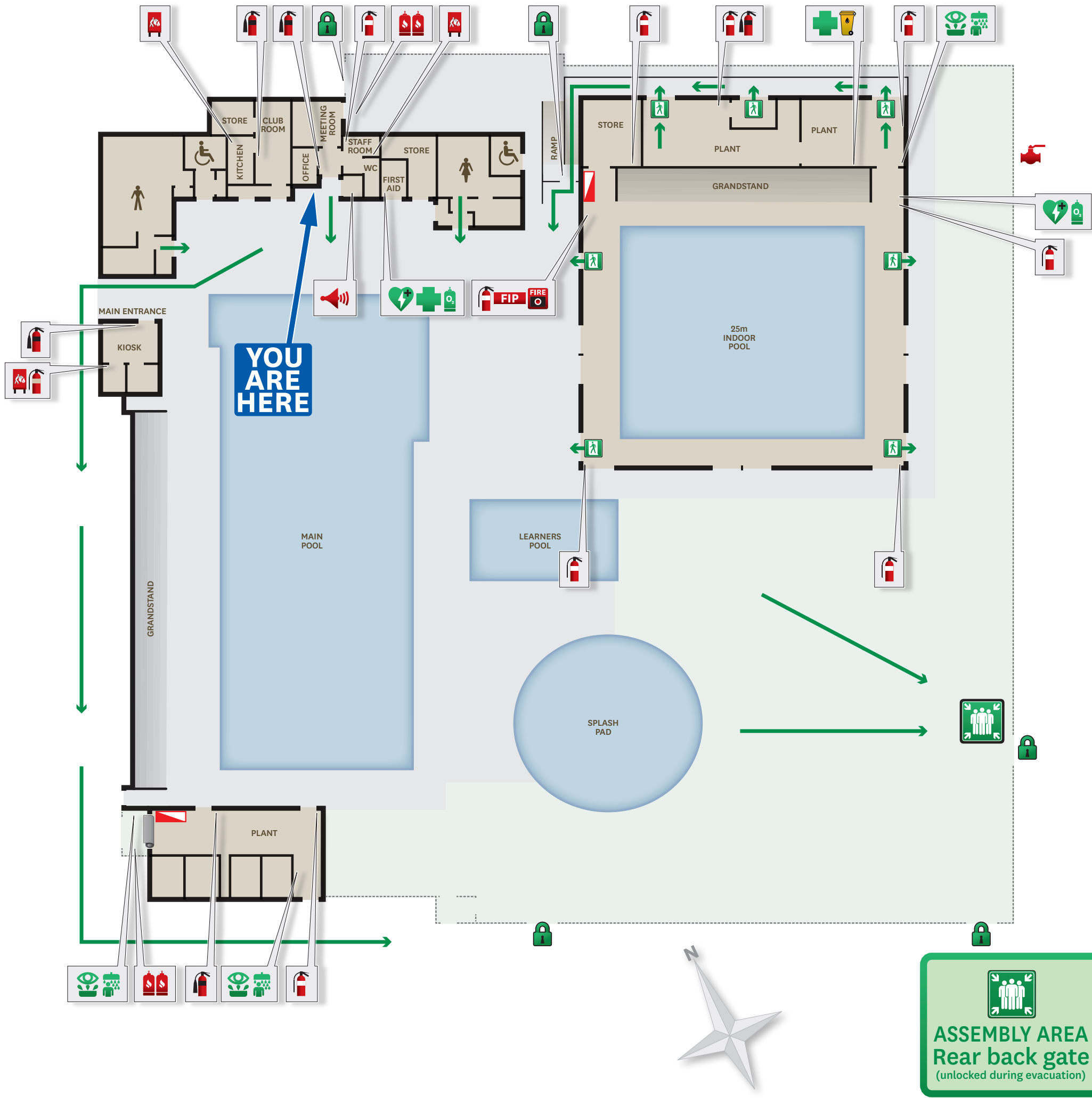


EVACUATION DIAGRAM

MAITLAND AQUATIC CENTRE

Maitland Park, Les Darcy Drive, Maitland NSW 2320



Location Plan



Fire extinguisher selection chart

CLASS OF FIRE		A	B	C	E	F
TYPE OF FIRE		Ordinary combustible wood, paper, plastic etc	Flammable and combustible liquids	Flammable gases	Fire involving energised electrical equipment	Fire involving cooking oil and fat
IDENT COLOUR	EXTING TYPE	EXTINGUISHER SUITABILITY				
	AB(E) Dry Chem Powder	YES	YES	YES	YES	NO
	CO ₂ Carbon Dioxide	LIMITED	LIMITED	NO	YES	NO
	Wet Chemical	YES	NO	NO	NO	YES

Fire/Emergency procedure

- R REMOVE**
Remove any person(s) in immediate danger, to a safe area. (If safe to do so)
 - A ALARM**
Ensure all occupants are aware of the emergency. Dial 000 – Fire Brigade
 - C CONTAIN**
Close doors and where possible windows to contain the fire/smoke.
 - E EXTINGUISH/EVACUATE**
Attempt to extinguish the fire only if you are trained and if safe to do so. Evacuate to Assembly Area.
- For all emergency services, dial 000**
Police / Fire Brigade / Ambulance

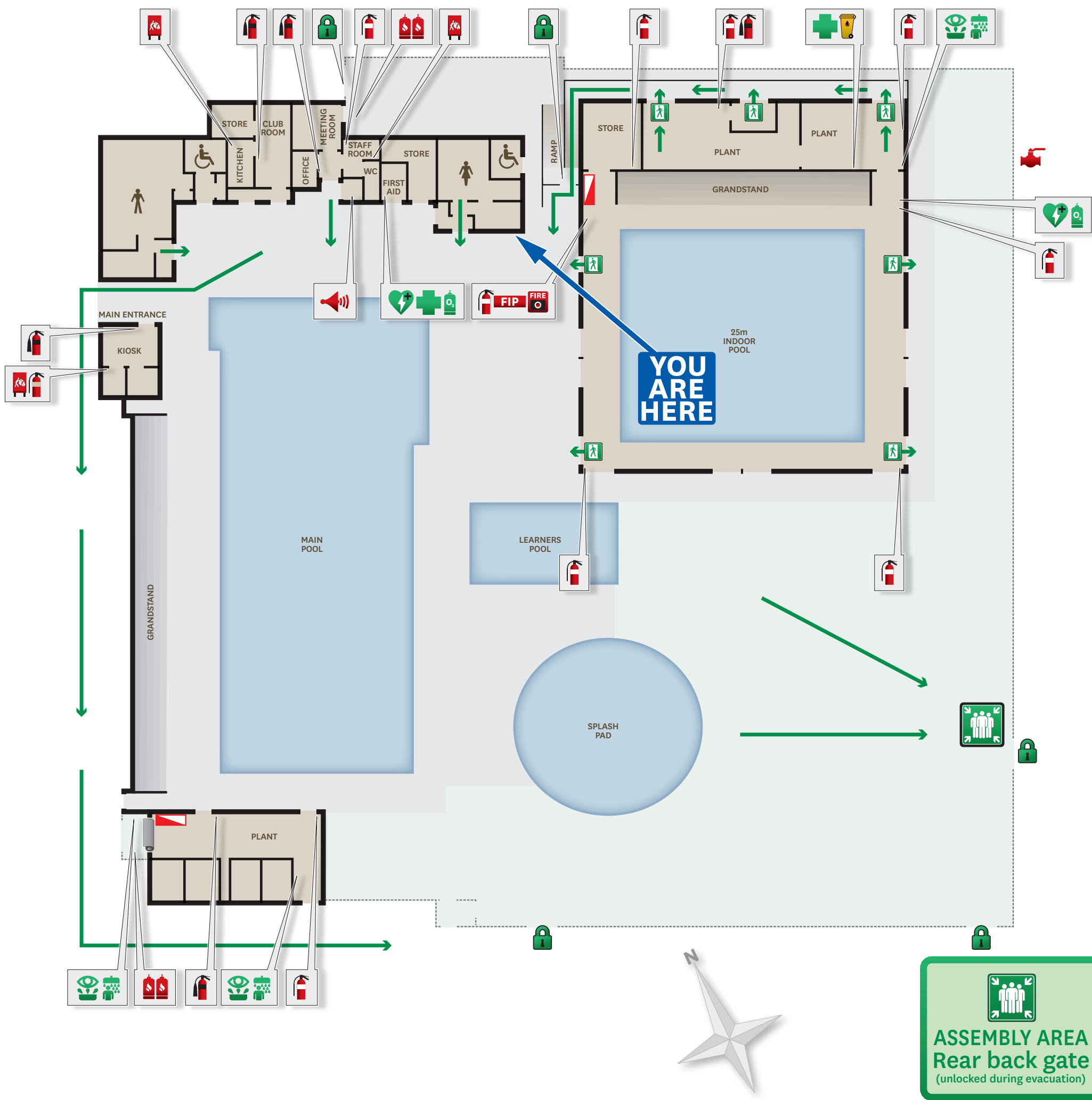
Legend

- Egress path
- Exit sign
- Assembly area
- First aid
- Defibrillator
- Eyewash shower
- Oxygen store
- Safety shower
- Locked gate
- Spill kit
- Fire Indicator Panel
- Manual call point
- Fire blanket
- LPG storage
- Switch board
- Public address
- Gas valve

EVACUATION DIAGRAM

MAITLAND AQUATIC CENTRE

Maitland Park, Les Darcy Drive, Maitland NSW 2320



Location Plan



Fire extinguisher selection chart

CLASS OF FIRE		A	B	C	E	F
TYPE OF FIRE		Ordinary combustible wood, paper, plastic etc	Flammable and combustible liquids	Flammable gases	Fire involving energised electrical equipment	Fire involving cooking oil and fat
IDENT COLOUR	EXTING TYPE	EXTINGUISHER SUITABILITY				
	AB(E) Dry Chem Powder	YES	YES	YES	YES	NO
	CO2 Carbon Dioxide	LIMITED	LIMITED	NO	YES	NO
	Wet Chemical	YES	NO	NO	NO	YES

Fire/Emergency procedure

- R REMOVE**
Remove any person(s) in immediate danger, to a safe area. (If safe to do so)
 - A ALARM**
Ensure all occupants are aware of the emergency. Dial 000 – Fire Brigade
 - C CONTAIN**
Close doors and where possible windows to contain the fire/smoke.
 - E EXTINGUISH/EVACUATE**
Attempt to extinguish the fire only if you are trained and if safe to do so. Evacuate to Assembly Area.
- For all emergency services, dial 000**
Police / Fire Brigade / Ambulance

Legend

- Egress path
- Exit sign
- Assembly area
- First aid
- Defibrillator
- Eyewash shower
- Oxygen store
- Safety shower
- Locked gate
- Spill kit
- Fire Indicator Panel
- Manual call point
- Fire blanket
- LPG storage
- Switch board
- Public address
- Gas valve

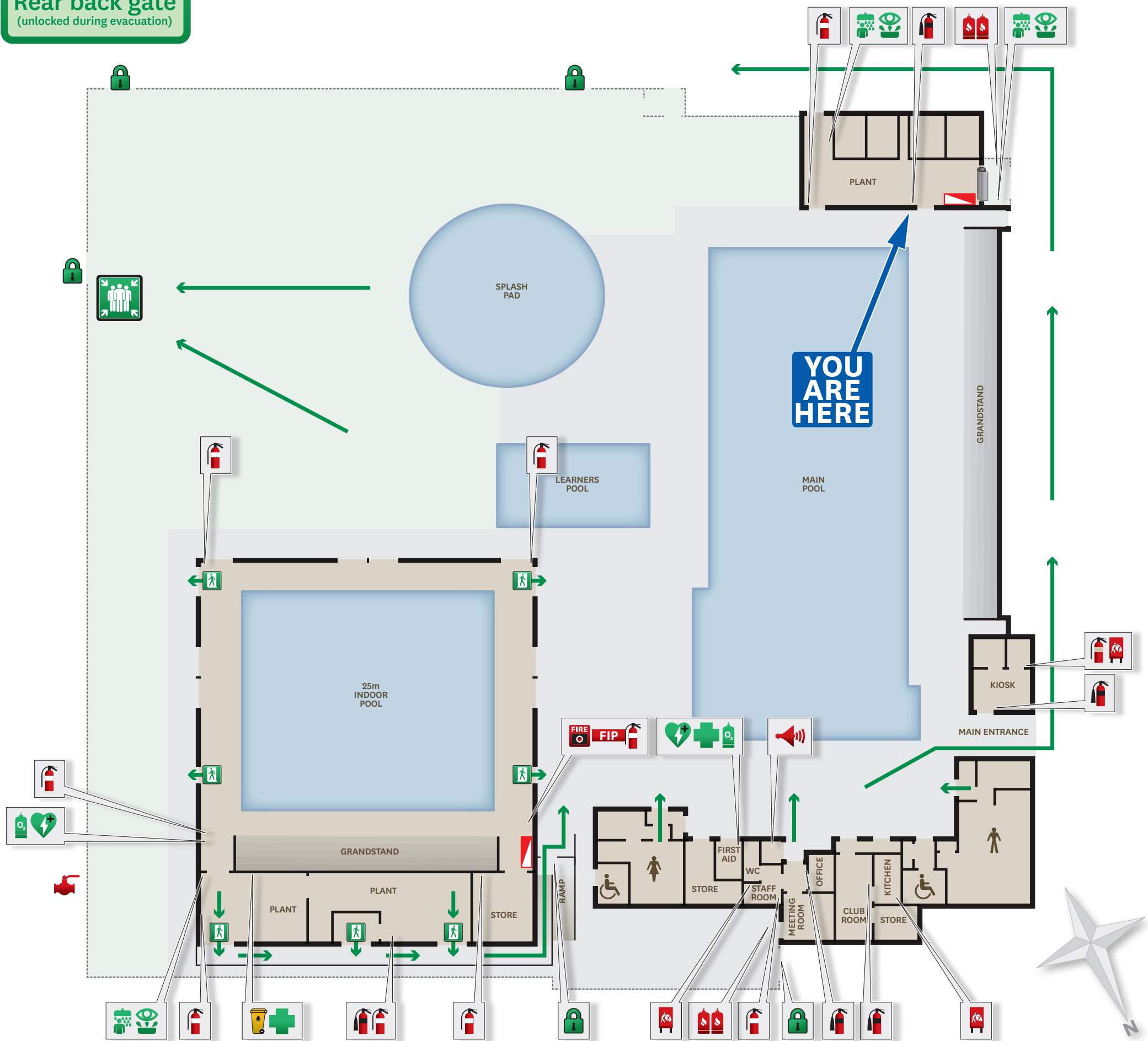
EVACUATION DIAGRAM

MAITLAND AQUATIC CENTRE

Maitland Park, Les Darcy Drive, Maitland NSW 2320






ASSEMBLY AREA
Rear back gate
(unlocked during evacuation)



Location Plan



















Fire extinguisher selection chart

CLASS OF FIRE		A	B	C	E	F
TYPE OF FIRE		Ordinary combustible wood, paper, plastic etc	Flammable and combustible liquids	Flammable gases	Fire involving energised electrical equipment	Fire involving cooking oil and fat
IDENT COLOUR	EXTING TYPE	EXTINGUISHER SUITABILITY				
	AB(E) Dry Chem Powder	YES	YES	YES	YES	NO
	CO2 Carbon Dioxide	LIMITED	LIMITED	NO	YES	NO
	Wet Chemical	YES	NO	NO	NO	YES

Fire/Emergency procedure

- R REMOVE**
Remove any person(s) in immediate danger, to a safe area. (If safe to do so)
- A ALARM**
Ensure all occupants are aware of the emergency. Dial 000 - Fire Brigade
- C CONTAIN**
Close doors and where possible windows to contain the fire/smoke.
- E EXTINGUISH/EVACUATE**
Attempt to extinguish the fire only if you are trained and if safe to do so. Evacuate to Assembly Area.
- For all emergency services, dial 000
Police / Fire Brigade / Ambulance

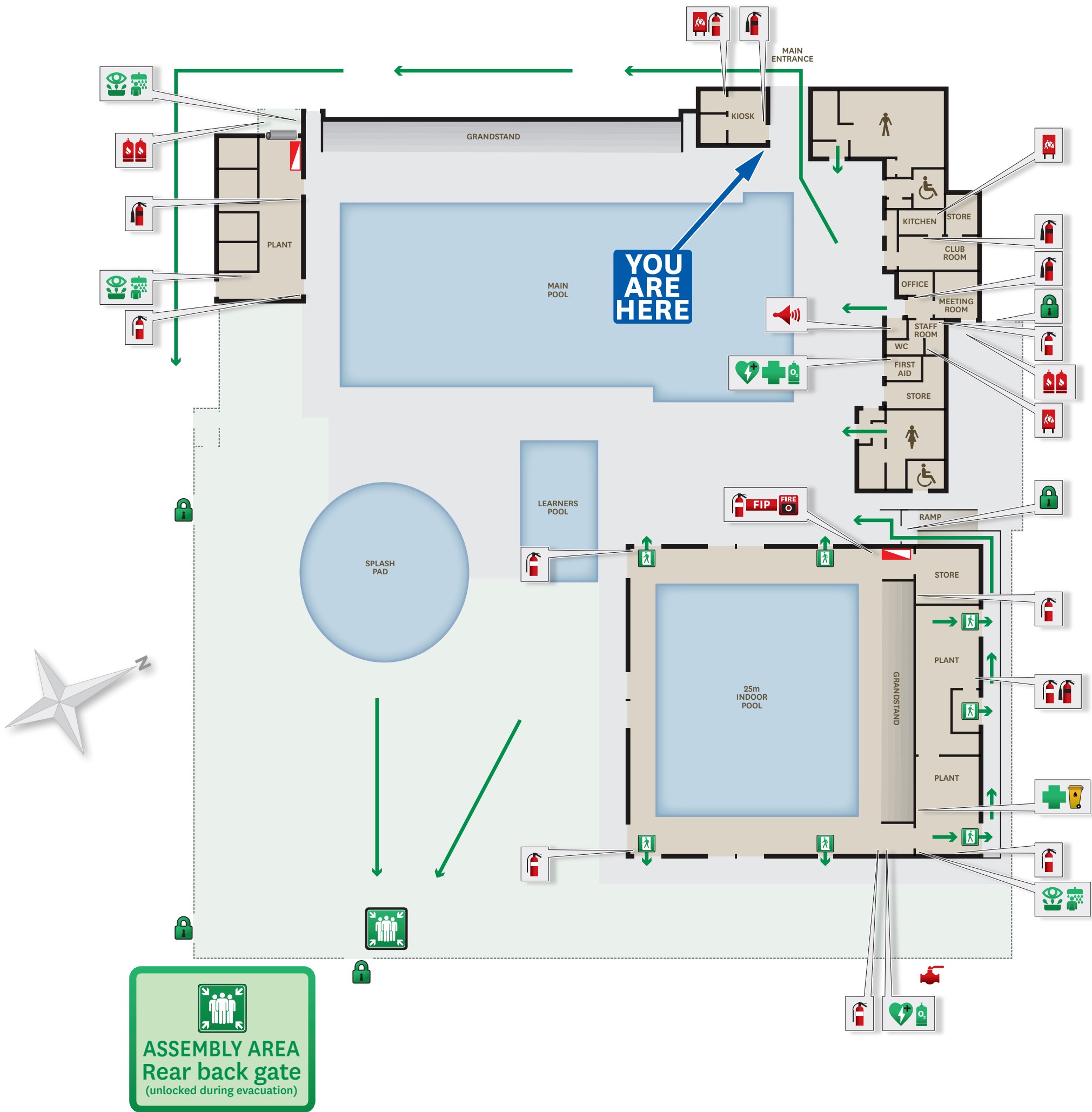
Legend

-  Egress path
-  Exit sign
-  Assembly area
-  First aid
-  Defibrillator
-  Eyewash shower
-  Oxygen store
-  Safety shower
-  Locked gate
-  Spill kit
-  Fire Indicator Panel
-  Manual call point
-  Fire blanket
-  LPG storage
-  Switch board
-  Public address
-  Gas valve

EVACUATION DIAGRAM

MAITLAND AQUATIC CENTRE

Maitland Park, Les Darcy Drive, Maitland NSW 2320



Location Plan



Fire extinguisher selection chart

CLASS OF FIRE		A	B	C	E	F
TYPE OF FIRE		Ordinary combustible wood, paper, plastic etc	Flammable and combustible liquids	Flammable gases	Fire involving energised electrical equipment	Fire involving cooking oil and fat
IDENT COLOUR	EXTING TYPE	EXTINGUISHER SUITABILITY				
	AB(E) Dry Chem Powder	YES	YES	YES	YES	NO
	CO2 Carbon Dioxide	LIMITED	LIMITED	NO	YES	NO
	Wet Chemical	YES	NO	NO	NO	YES

Fire/Emergency procedure

- R REMOVE**
Remove any person(s) in immediate danger, to a safe area. (If safe to do so)
 - A ALARM**
Ensure all occupants are aware of the emergency. Dial 000 - Fire Brigade
 - C CONTAIN**
Close doors and where possible windows to contain the fire/smoke.
 - E EXTINGUISH/EVACUATE**
Attempt to extinguish the fire only if you are trained and if safe to do so. Evacuate to Assembly Area.
- For all emergency services, dial 000**
Police / Fire Brigade / Ambulance

Legend

- Egress path
- Exit sign
- Assembly area
- First aid
- Defibrillator
- Eyewash shower
- Oxygen store
- Safety shower
- Locked gate
- Spill kit
- Fire Indicator Panel
- Manual call point
- Fire blanket
- LPG storage
- Switch board
- Public address
- Gas valve

PEP Training

178 Caves Beach Road, Caves Beach NSW 2281
Mobile 0400 604 439

www.PEPTraining.com.au



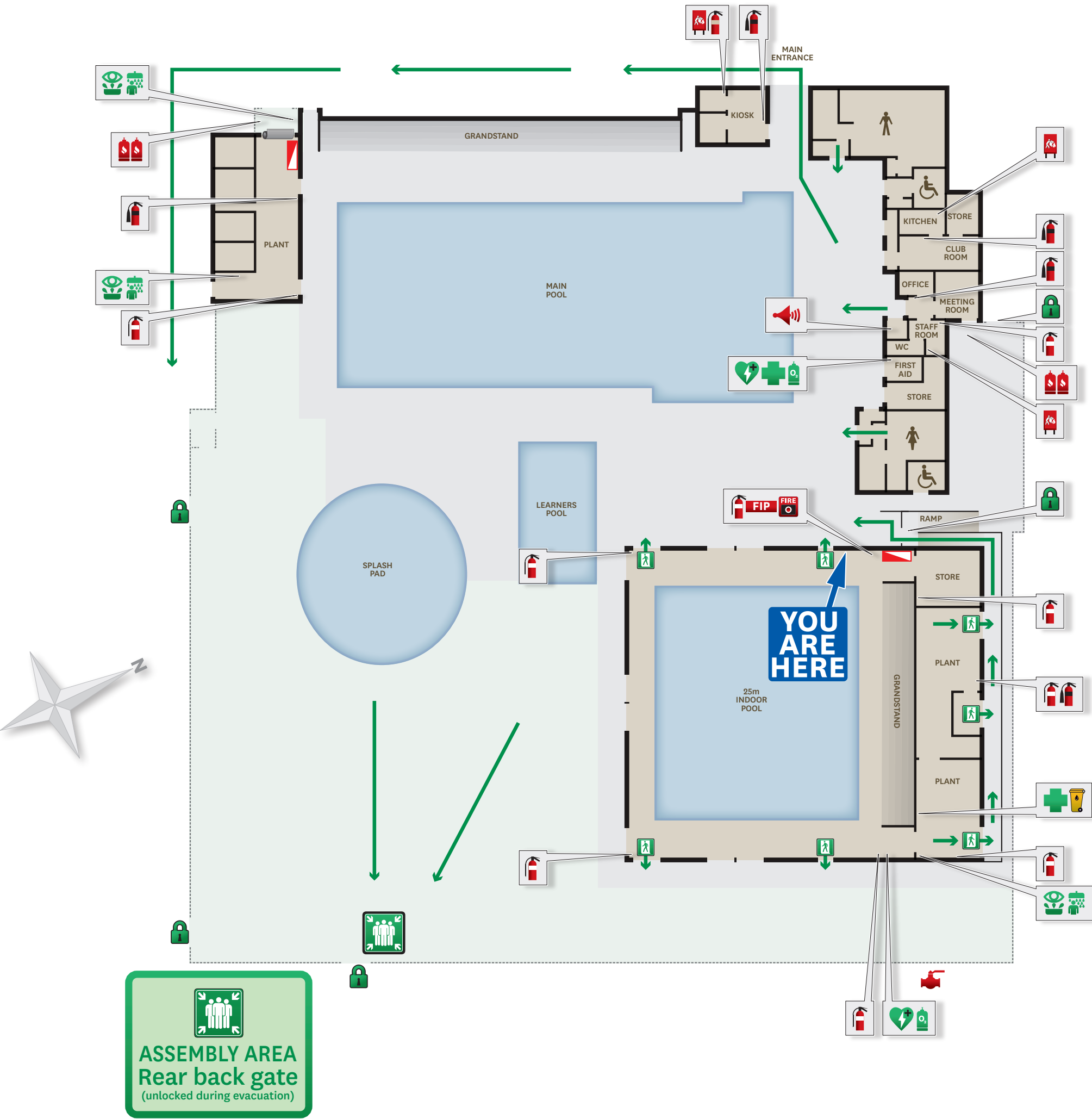
Designed by:
Drawn by:
Date:
Scale:
Validity date:

Summa Stanbridge
Malcolm Jones
12 April 2021
NTS
12 April 2026

EVACUATION DIAGRAM

MAITLAND AQUATIC CENTRE

Maitland Park, Les Darcy Drive, Maitland NSW 2320



Location Plan



Fire extinguisher selection chart

CLASS OF FIRE		A	B	C	E	F
TYPE OF FIRE		Ordinary combustible wood, paper, plastic etc	Flammable and combustible liquids	Flammable gases	Fire involving energised electrical equipment	Fire involving cooking oil and fat
IDENT COLOUR	EXTING TYPE	EXTINGUISHER SUITABILITY				
	AB(E) Dry Chem Powder	YES	YES	YES	YES	NO
	CO2 Carbon Dioxide	LIMITED	LIMITED	NO	YES	NO
	Wet Chemical	YES	NO	NO	NO	YES

Fire/Emergency procedure

- R REMOVE**
Remove any person(s) in immediate danger, to a safe area. (If safe to do so)
 - A ALARM**
Ensure all occupants are aware of the emergency. Dial 000 - Fire Brigade
 - C CONTAIN**
Close doors and where possible windows to contain the fire/smoke.
 - E EXTINGUISH/EVACUATE**
Attempt to extinguish the fire only if you are trained and if safe to do so. Evacuate to Assembly Area.
- For all emergency services, dial 000**
Police / Fire Brigade / Ambulance

Legend

- Egress path
- Exit sign
- Assembly area
- First aid
- Defibrillator
- Eyewash shower
- Oxygen store
- Safety shower
- Locked gate
- Spill kit
- Fire Indicator Panel
- Manual call point
- Fire blanket
- LPG storage
- Switch board
- Public address
- Gas valve

PEP Training

178 Caves Beach Road, Caves Beach NSW 2281
Mobile 0400 604 439

www.PEPTraining.com.au



Designed by:
Drawn by:
Date:
Scale:
Validity date:

Summa Stanbridge
Malcolm Jones
12 April 2021
NTS
12 April 2026

EVACUATION DIAGRAM

MAITLAND AQUATIC CENTRE

Maitland Park, Les Darcy Drive, Maitland NSW 2320



Location Plan



Fire extinguisher selection chart

CLASS OF FIRE		A	B	C	E	F
TYPE OF FIRE		Ordinary combustible wood, paper, plastic etc	Flammable and combustible liquids	Flammable gases	Fire involving energised electrical equipment	Fire involving cooking oil and fat
IDENT COLOUR	EXTING TYPE	EXTINGUISHER SUITABILITY				
	AB(E) Dry Chem Powder	YES	YES	YES	YES	NO
	CO2 Carbon Dioxide	LIMITED	LIMITED	NO	YES	NO
	Wet Chemical	YES	NO	NO	NO	YES

Fire/Emergency procedure

- R REMOVE**
Remove any person(s) in immediate danger, to a safe area. (If safe to do so)
 - A ALARM**
Ensure all occupants are aware of the emergency. Dial 000 - Fire Brigade
 - C CONTAIN**
Close doors and where possible windows to contain the fire/smoke.
 - E EXTINGUISH/EVACUATE**
Attempt to extinguish the fire only if you are trained and if safe to do so. Evacuate to Assembly Area.
- For all emergency services, dial 000**
Police / Fire Brigade / Ambulance

Legend

- Egress path
- Exit sign
- Assembly area
- First aid
- Defibrillator
- Eyewash shower
- Oxygen store
- Safety shower
- Locked gate
- Spill kit
- Fire Indicator Panel
- Manual call point
- Fire blanket
- LPG storage
- Switch board
- Public address
- Gas valve