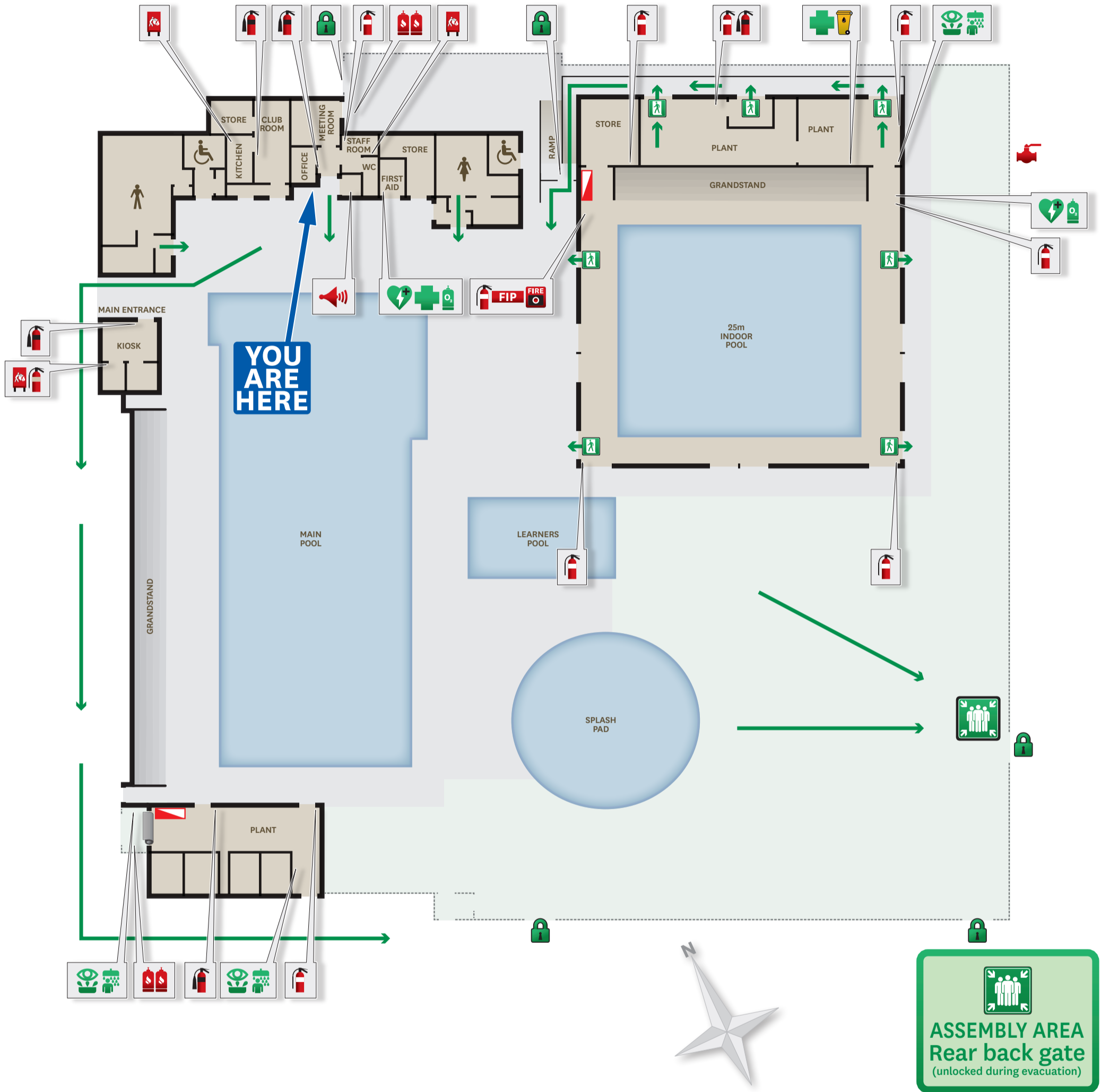


EVACUATION DIAGRAM

MAITLAND AQUATIC CENTRE

Maitland Park, Les Darcy Drive, Maitland NSW 2320



Location Plan



Fire extinguisher selection chart

CLASS OF FIRE	A	B	C	E	F	
TYPE OF FIRE	Ordinary combustible wood, paper, plastic etc	Flammable and combustible liquids	Flammable gases	Fire involving energised electrical equipment	Fire involving cooking oil and fat	
IDENT COLOUR	EXTING TYPE	EXTINGUISHER SUITABILITY				
	AB(E) Dry Chem Powder	YES	YES	YES	YES	NO
	CO ₂ Carbon Dioxide	LIMITED	LIMITED	NO	YES	NO
	Wet Chemical	YES	NO	NO	NO	YES

Fire/Emergency procedure

- R REMOVE**
Remove any person(s) in immediate danger, to a safe area. (If safe to do so)
 - A ALARM**
Ensure all occupants are aware of the emergency. Dial 000 - Fire Brigade
 - C CONTAIN**
Close doors and where possible windows to contain the fire/smoke.
 - E EXTINGUISH/EVACUATE**
Attempt to extinguish the fire only if you are trained and if safe to do so. Evacuate to Assembly Area.
- For all emergency services, dial 000**
Police / Fire Brigade / Ambulance

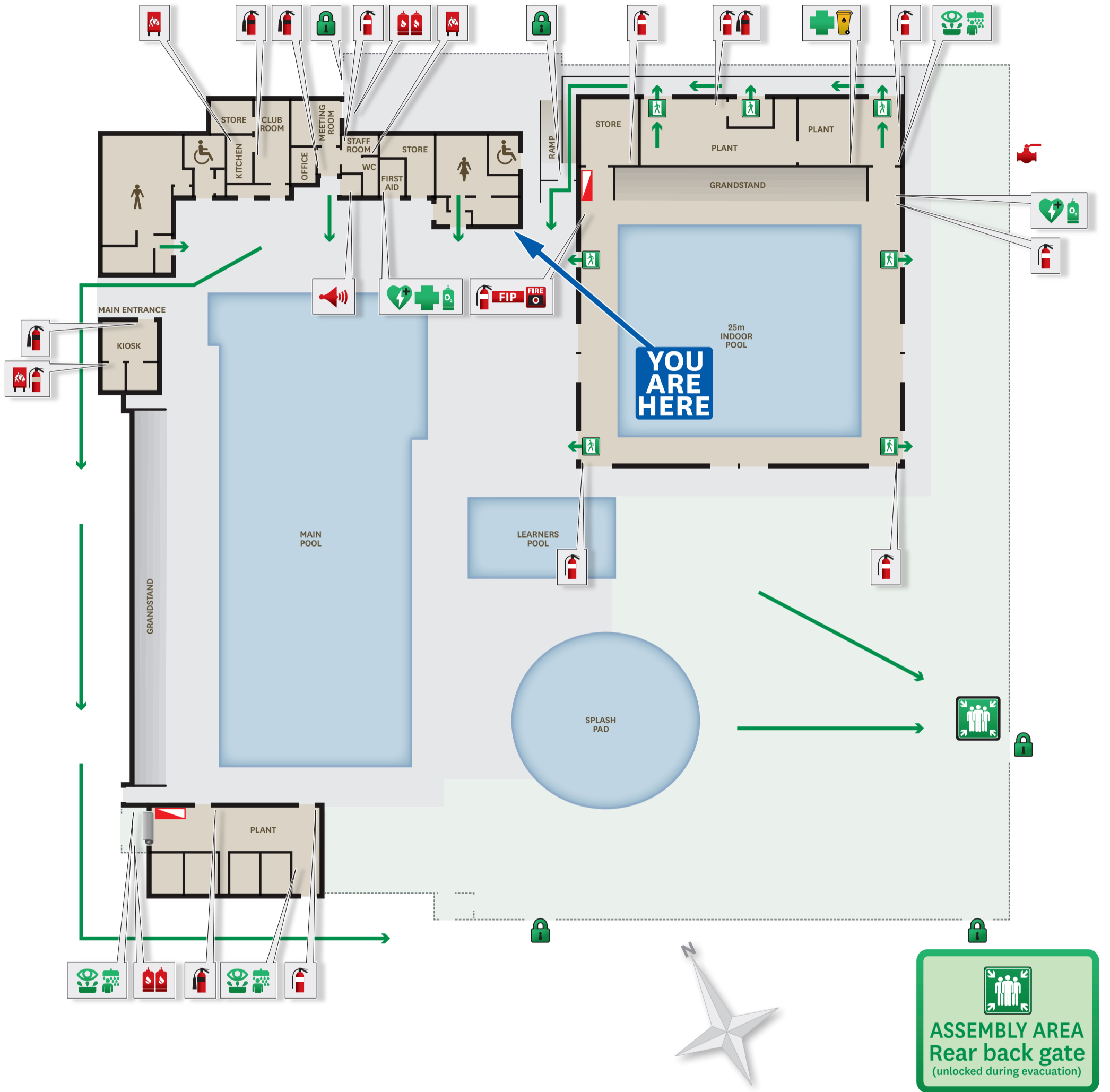
Legend

- Egress path
- Exit sign
- Assembly area
- First aid
- Defibrillator
- Eyewash shower
- Oxygen store
- Safety shower
- Locked gate
- Spill kit
- Fire Indicator Panel
- Manual call point
- Fire blanket
- LPG storage
- Switch board
- Public address
- Gas valve

EVACUATION DIAGRAM

MAITLAND AQUATIC CENTRE

Maitland Park, Les Darcy Drive, Maitland NSW 2320



Location Plan



Fire extinguisher selection chart

CLASS OF FIRE		A	B	C	E	F
TYPE OF FIRE		Ordinary combustible wood, paper, plastic etc	Flammable and combustible liquids	Flammable gases	Fire involving energised electrical equipment	Fire involving cooking oil and fat
IDENT COLOUR	EXTING TYPE	EXTINGUISHER SUITABILITY				
	AB(E) Dry Chem Powder	YES	YES	YES	YES	NO
	CO ₂ Carbon Dioxide	LIMITED	LIMITED	NO	YES	NO
	Wet Chemical	YES	NO	NO	NO	YES

Fire/Emergency procedure

- R REMOVE**
Remove any person(s) in immediate danger, to a safe area. (If safe to do so)
 - A ALARM**
Ensure all occupants are aware of the emergency. Dial 000 - Fire Brigade
 - C CONTAIN**
Close doors and where possible windows to contain the fire/smoke.
 - E EXTINGUISH/EVACUATE**
Attempt to extinguish the fire only if you are trained and if safe to do so. Evacuate to Assembly Area.
- For all emergency services, dial 000**
Police / Fire Brigade / Ambulance

Legend

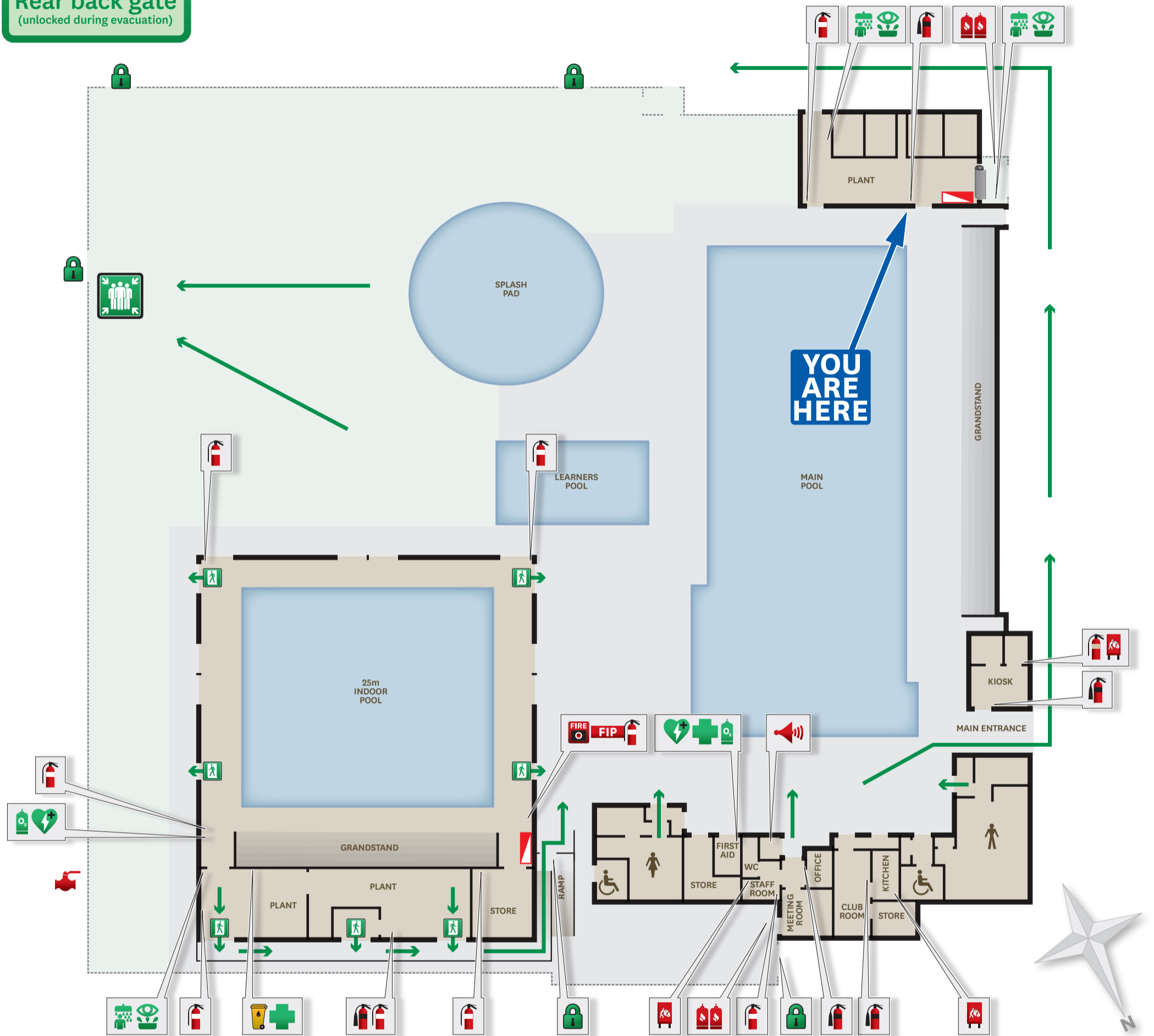
- Egress path
- Exit sign
- Assembly area
- First aid
- Defibrillator
- Eyewash shower
- Oxygen store
- Safety shower
- Locked gate
- Spill kit
- Fire Indicator Panel
- Manual call point
- Fire blanket
- LPG storage
- Switch board
- Public address
- Gas valve

EVACUATION DIAGRAM

MAITLAND AQUATIC CENTRE

Maitland Park, Les Darcy Drive, Maitland NSW 2320

ASSEMBLY AREA
Rear back gate
(unlocked during evacuation)



Location Plan



Fire extinguisher selection chart

CLASS OF FIRE	A	B	C	E	F	
TYPE OF FIRE	Ordinary combustible wood, paper, plastic etc	Flammable and combustible liquids	Flammable gases	Fire involving energised electrical equipment	Fire involving cooking oil and fat	
IDENT COLOUR	EXTING TYPE	EXTINGUISHER SUITABILITY				
	AB(E) Dry Chem Powder	YES	YES	YES	YES	NO
	CO2 Carbon Dioxide	LIMITED	LIMITED	NO	YES	NO
	Wet Chemical	YES	NO	NO	NO	YES

Fire/Emergency procedure

- R REMOVE**
Remove any person(s) in immediate danger, to a safe area. (If safe to do so)
 - A ALARM**
Ensure all occupants are aware of the emergency. Dial 000 - Fire Brigade
 - C CONTAIN**
Close doors and where possible windows to contain the fire/smoke.
 - E EXTINGUISH/EVACUATE**
Attempt to extinguish the fire only if you are trained and if safe to do so. Evacuate to Assembly Area.
- For all emergency services, dial 000**
Police / Fire Brigade / Ambulance

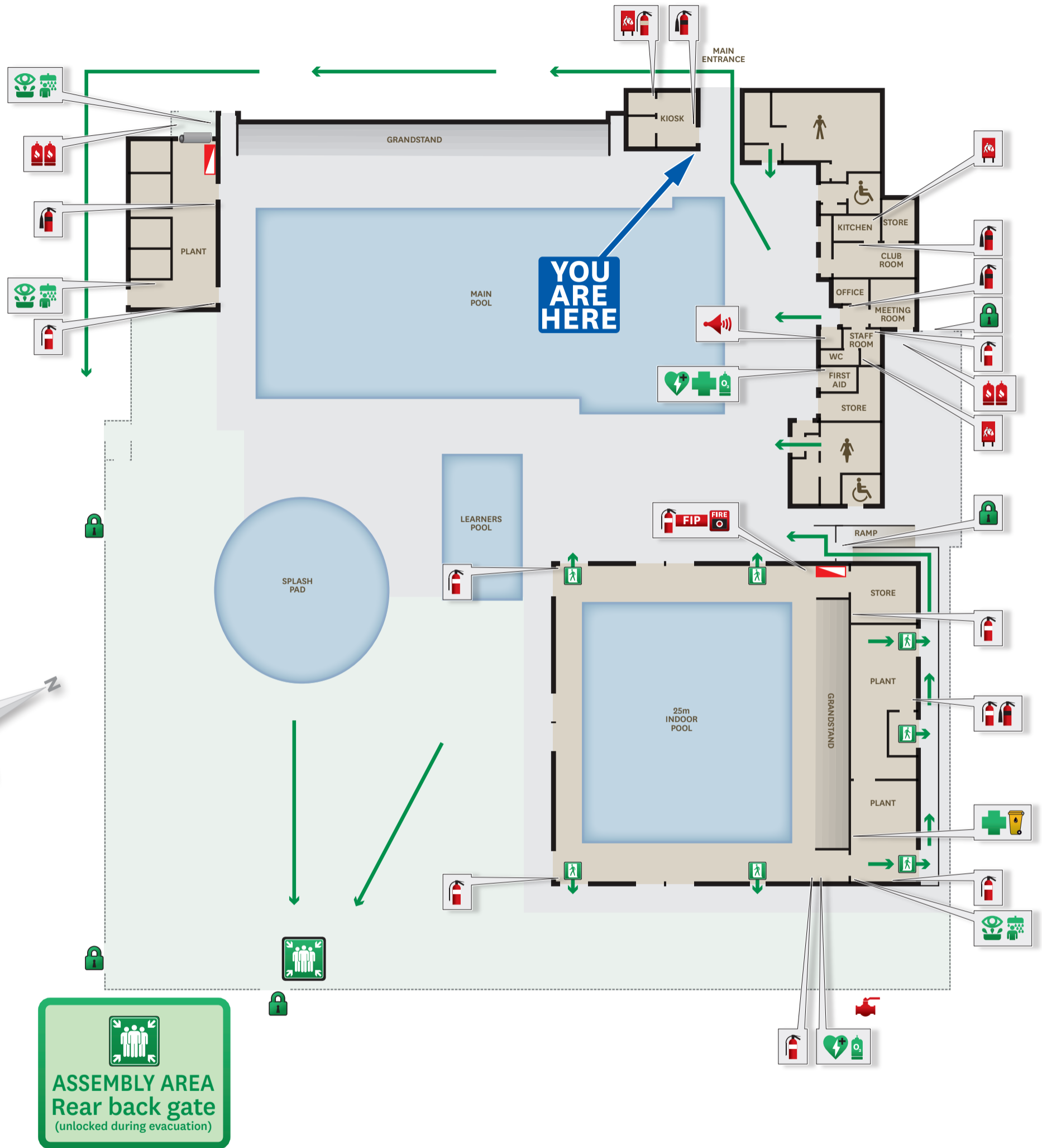
Legend

- Egress path
- Oxygen store
- Fire blanket
- Exit sign
- Safety shower
- LPG storage
- Assembly area
- Locked gate
- Switch board
- First aid
- Spill kit
- Public address
- Defibrillator
- Fire Indicator Panel
- Gas valve
- Eyewash shower
- Manual call point

EVACUATION DIAGRAM

MAITLAND AQUATIC CENTRE

Maitland Park, Les Darcy Drive, Maitland NSW 2320



Location Plan



Fire extinguisher selection chart

CLASS OF FIRE		A	B	C	E	F
TYPE OF FIRE		Ordinary combustible wood, paper, plastic etc	Flammable and combustible liquids	Flammable gases	Fire involving energised electrical equipment	Fire involving cooking oil and fat
IDENT COLOUR	EXTING TYPE	EXTINGUISHER SUITABILITY				
	AB(E) Dry Chem Powder	YES	YES	YES	YES	NO
	CO ₂ Carbon Dioxide	LIMITED	LIMITED	NO	YES	NO
	Wet Chemical	YES	NO	NO	NO	YES

Fire/Emergency procedure

- R REMOVE**
Remove any person(s) in immediate danger, to a safe area. (If safe to do so)
 - A ALARM**
Ensure all occupants are aware of the emergency. Dial 000 - Fire Brigade
 - C CONTAIN**
Close doors and where possible windows to contain the fire/smoke.
 - E EXTINGUISH/EVACUATE**
Attempt to extinguish the fire only if you are trained and if safe to do so. Evacuate to Assembly Area.
- For all emergency services, dial 000
Police / Fire Brigade / Ambulance**

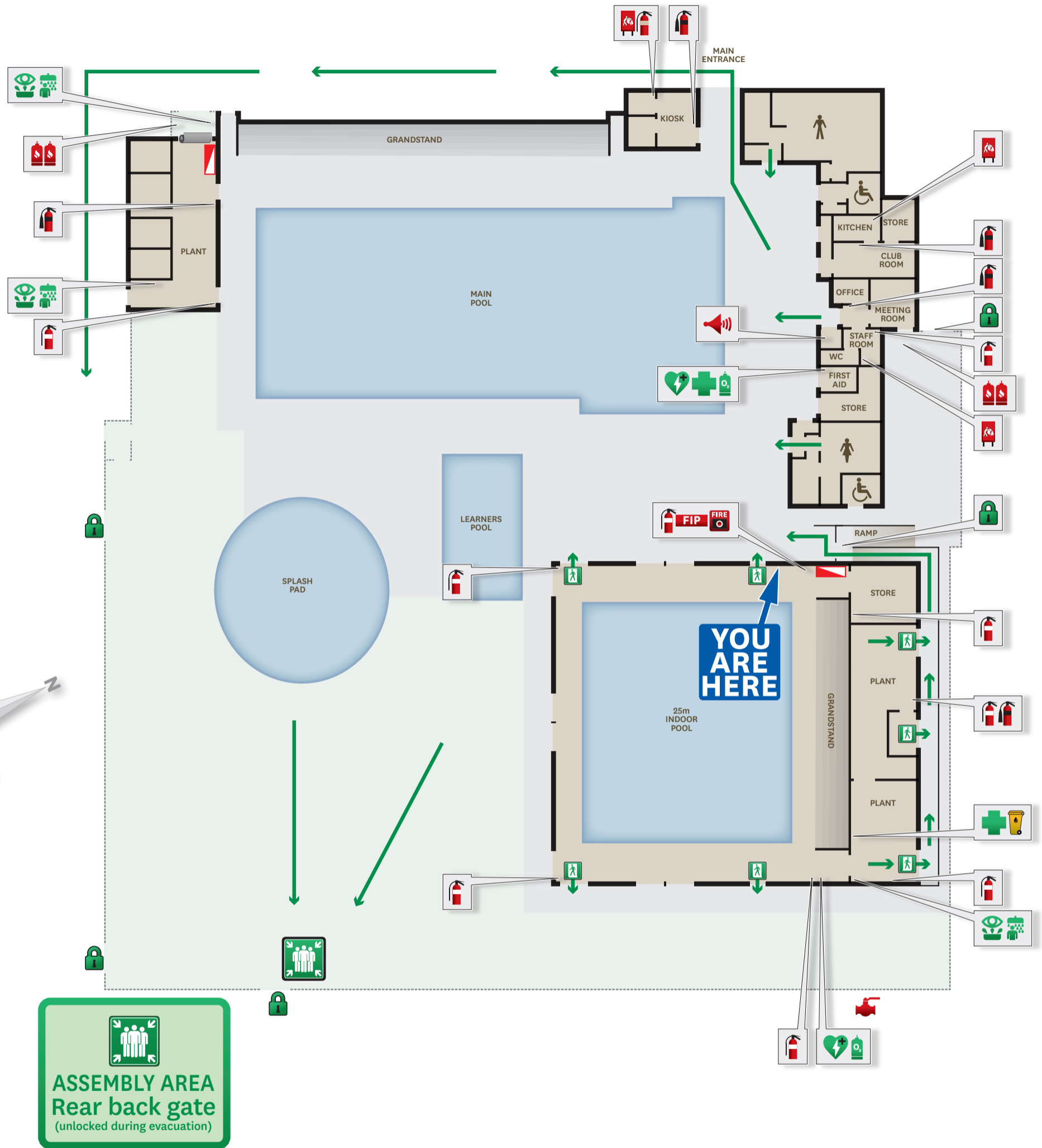
Legend

- Egress path
- Exit sign
- Assembly area
- First aid
- Defibrillator
- Eyewash shower
- Oxygen store
- Safety shower
- Locked gate
- Spill kit
- Fire Indicator Panel
- Manual call point
- Fire blanket
- LPG storage
- Switch board
- Public address
- Gas valve

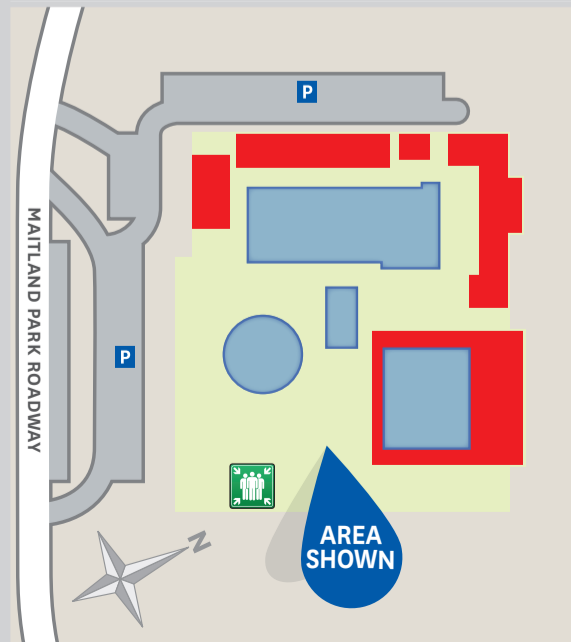
EVACUATION DIAGRAM

MAITLAND AQUATIC CENTRE

Maitland Park, Les Darcy Drive, Maitland NSW 2320



Location Plan



Fire extinguisher selection chart

CLASS OF FIRE		A	B	C	E	F
TYPE OF FIRE		Ordinary combustible wood, paper, plastic etc	Flammable and combustible liquids	Flammable gases	Fire involving energised electrical equipment	Fire involving cooking oil and fat
IDENT COLOUR	EXTING TYPE	EXTINGUISHER SUITABILITY				
	AB(E) Dry Chem Powder	YES	YES	YES	YES	NO
	CO ₂ Carbon Dioxide	LIMITED	LIMITED	NO	YES	NO
	Wet Chemical	YES	NO	NO	NO	YES

Fire/Emergency procedure

- R REMOVE**
Remove any person(s) in immediate danger, to a safe area. (If safe to do so)
 - A ALARM**
Ensure all occupants are aware of the emergency. Dial 000 - Fire Brigade
 - C CONTAIN**
Close doors and where possible windows to contain the fire/smoke.
 - E EXTINGUISH/EVACUATE**
Attempt to extinguish the fire only if you are trained and if safe to do so. Evacuate to Assembly Area.
- For all emergency services, dial 000
Police / Fire Brigade / Ambulance**

Legend

- Egress path
- Exit sign
- Assembly area
- First aid
- Defibrillator
- Eyewash shower
- Oxygen store
- Safety shower
- Locked gate
- Spill kit
- Fire Indicator Panel
- Manual call point
- Fire blanket
- LPG storage
- Switch board
- Public address
- Gas valve

EVACUATION DIAGRAM

MAITLAND AQUATIC CENTRE

Maitland Park, Les Darcy Drive, Maitland NSW 2320



Location Plan



Fire extinguisher selection chart

CLASS OF FIRE	A	B	C	E	F	
TYPE OF FIRE	Ordinary combustible wood, paper, plastic etc	Flammable and combustible liquids	Flammable gases	Fire involving energised electrical equipment	Fire involving cooking oil and fat	
IDENT COLOUR	EXTINGUISHER TYPE	EXTINGUISHER SUITABILITY				
	AB(E) Dry Chem Powder	YES	YES	YES	YES	NO
	CO ₂ Carbon Dioxide	LIMITED	LIMITED	NO	YES	NO
	Wet Chemical	YES	NO	NO	NO	YES

Fire/Emergency procedure

- R REMOVE**
Remove any person(s) in immediate danger, to a safe area. (If safe to do so)
 - A ALARM**
Ensure all occupants are aware of the emergency. Dial 000 - Fire Brigade
 - C CONTAIN**
Close doors and where possible windows to contain the fire/smoke.
 - E EXTINGUISH/EVACUATE**
Attempt to extinguish the fire only if you are trained and if safe to do so. Evacuate to Assembly Area.
- For all emergency services, dial 000**
Police / Fire Brigade / Ambulance

Legend

- Egress path
- Oxygen store
- Fire blanket
- Exit sign
- Safety shower
- LPG storage
- Assembly area
- Locked gate
- Switch board
- First aid
- Spill kit
- Public address
- Defibrillator
- Fire Indicator Panel
- Gas valve
- Eyewash shower
- Manual call point