



Living at Walka



Key Inquiry Question



Who lived at Walka and what role did they play in the establishment of the Water Works?



Henry Walsh- Chief Engineer

Henry was a Dublin-educated civil engineer who arrived in Sydney in 1877. He designed major public works in Newcastle and Sydney, including the Walsh Bay wharves precinct. He also reclaimed and named Walsh Island in the Hunter River at Newcastle.

He lived on site at Walka during construction and was responsible for day-to-day supervision.



Jack McLeod- Chief Engineer

Last engineer in charge of Walka Water Works. He lived on site.

Jack is shown here with the panel of photographs he received on retirement from the Hunter District Water Board on 4 June, 1980.





Key Inquiry Question



How many houses were there and where were they located on the property?



Houses at Walka

Chief Engineer's residence

Second Engineer's cottage

Four small brick cottages

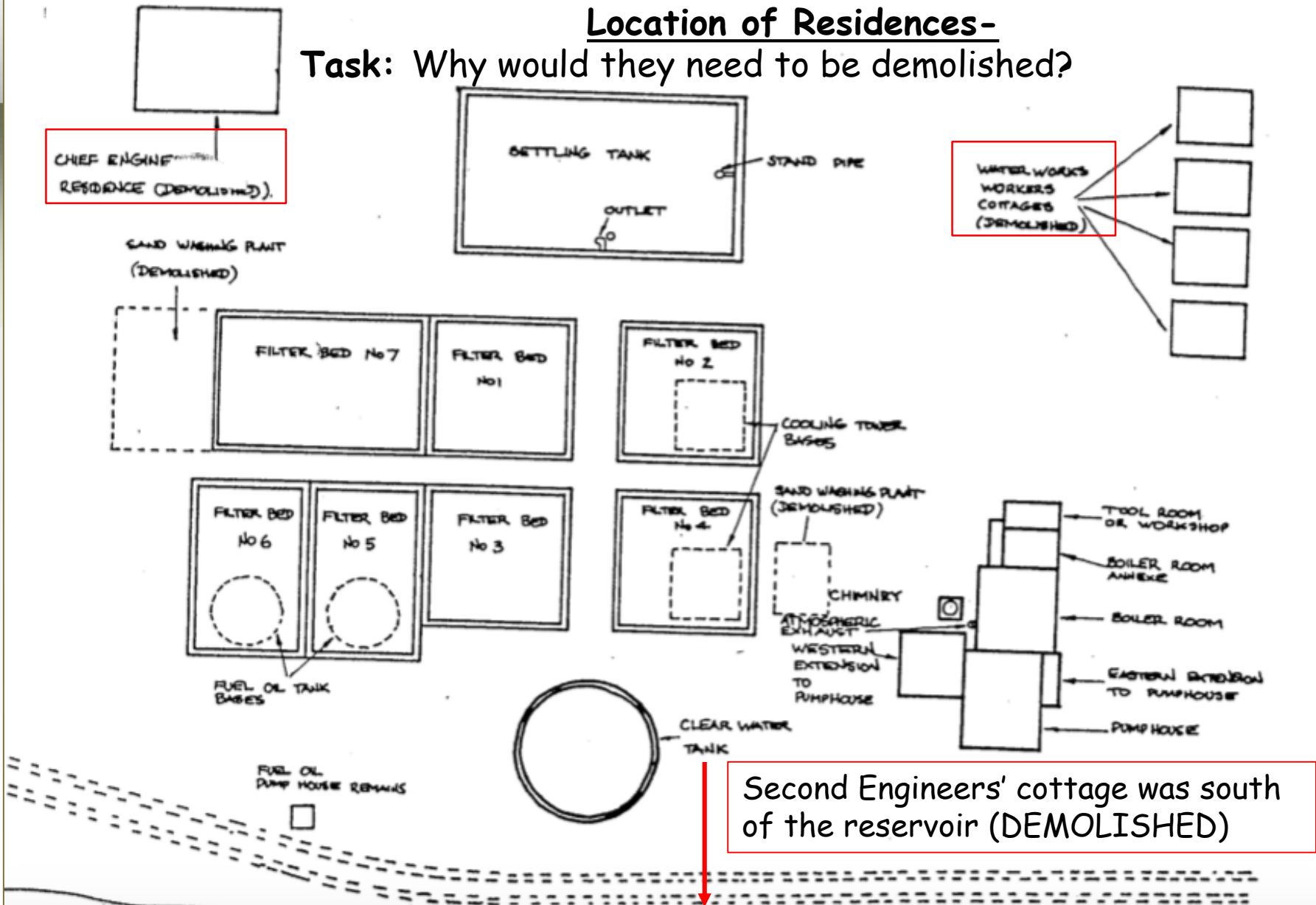
Task: Discuss- what is a cottage?

Do we still build cottages?

Where would you find a cottage?

Location of Residences-

Task: Why would they need to be demolished?



Second Engineers' cottage was south of the reservoir (DEMOLISHED)



Chief Engineer's Residence

The chief Engineer's residence was located on the most elevated portion of the site, to the northwest of the settling tank. From here it was possible to view the entire complex. The residence, which was built sometime after 1882 was a nine room brick cottage.

Substantial footings and rubble associated with this cottage remain, as does a tennis court and an approach road flanked by plantings of introduced trees.

Task: Sketch the Chief Engineer's Residence in lead pencil or charcoal



RESIDENT ENGINEERS QUARTERS

AT

WALKA LAGOON RESERVOIR.

Sheet 3004



FRONT ELEVATION



SIDE ELEVATION



SIDE ELEVATION

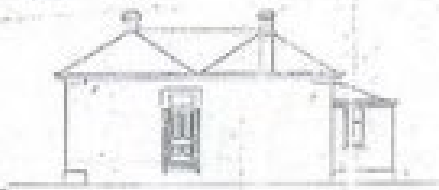


FLOOR PLAN



PLAN
TANK

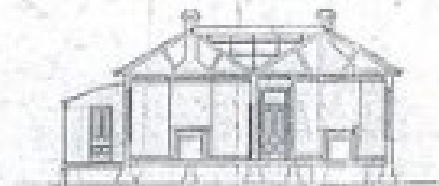
Water Supply - connected
to the Reservoir



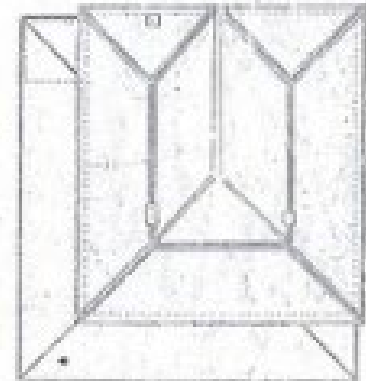
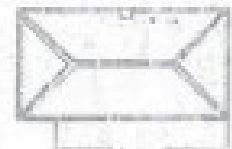
END ELEVATION



SECTION



SECTION ON LINE A-A



PLAN OF ROOF







Second Engineer's Cottage

A cottage for the Second Engineer was formerly located on the southern bank of the reservoir, west of the bye wash. This was a six room brick cottage which was demolished in 1975.

The footings of this cottage remain. Unfortunately, there is no photographic evidence of this building.



Four small brick cottages

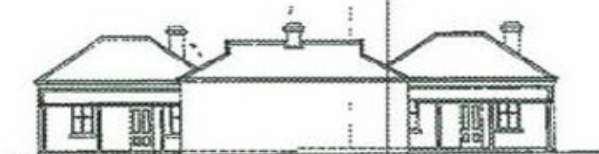
Four small brick cottages, each with seven rooms were built to the north of the main complex, near Scobie's Lane during the 1880's, for the use of waterworks employees and their families.

They were demolished in 1975. Little visible evidence remains, although it is possible that footings and/or other sub-surface features are present. There are no photos of these cottages.

— H O W S & S BOARD —
 Additions to Cottages at Walka Pumping Station

Scale 3/8 Inch = 1 Foot

McNamee
 March 20, 1907



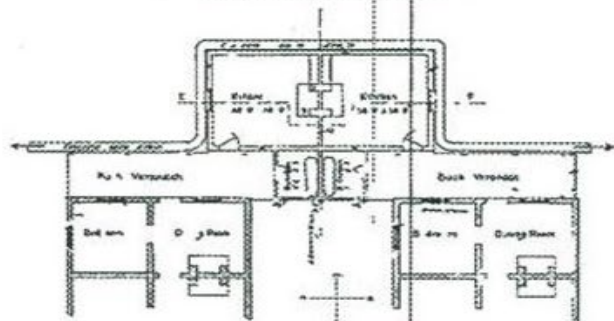
— BACK ELEVATION —



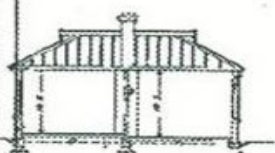
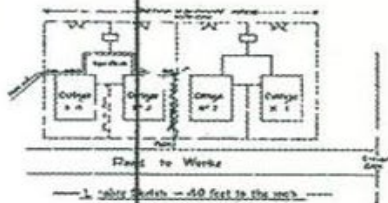
— NORTH SIDE ELEVATION —



— SOUTH SIDE ELEVATION —



— PLAN —

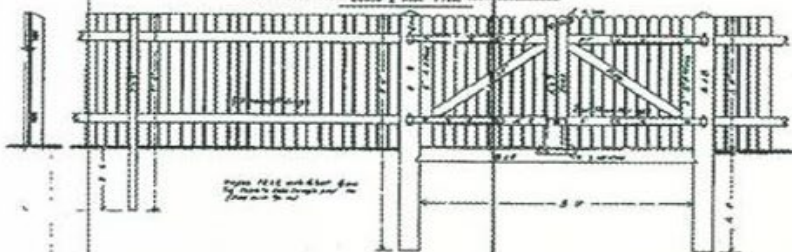


— SECTION E F —

As per plan & specifications
 dated 10/10/06
 1700 sq. ft. on 600 sq. ft. lot
 27,500 sq. ft.

— NEW GATES AND FENCE —

Scale 3/8 Inch = 1 Foot



Drawn by H. H. ...

E.P. 1

1907