



BUSHFIRE THREAT ASSESSMENT

FOR
A PROPOSED RESIDENTIAL
SUBDIVISION AT

512 RAYMOND TERRACE ROAD,
THORNTON NSW 2322

Prepared by:

Firebird ecoSultants Pty Ltd

ABN – 16 105 985 993

PO Box 354

Newcastle NSW 2300

Mob: 0414 465 990

Ph: 02 4910 3939

Fax: 02 4929 2727

Email: sarah@firebirdeco.com.au



Site Details:	512 Raymond Terrace Road, Thornton NSW 2322
Prepared by:	<i>Sarah Jones B.Env.Sc.,G.Dip.DBPA (Design in Bushfire Prone Areas)</i> <i>Firebird ecoSultants Pty Ltd</i> ABN – 16 105 985 993 PO Box 354, Newcastle NSW 2300 M: 0414 465 990 Email: sarah@firebirdeco.com.au T: 02 4910 3939 Fax: 02 4929 2727
Prepared for:	Terry and Sue Bunt
Reference No.	Thornton – Hunter Land Pty Ltd – October 2021
Document Status & Date:	28/10/2021 26/10/2022

Disclaimer

Notwithstanding the precautions adopted within this report, it should always be remembered that bushfires burn under a wide range of conditions. An element of risk, no matter how small always remains, and although the standard is designed to improve the performance of such buildings, there can be no guarantee, because of the variable nature of bushfires, that any one building will withstand bushfire attack on every occasion.



Executive Summary



A Bushfire Threat Assessment Report (BTA) has been prepared by Firebird ecoSultants Pty Ltd at the request of Hunter Land Pty Ltd for a proposed residential subdivision at 512 Raymond Terrace Road, Thornton NSW 2322. The report forms part of the supporting documentation for a DA to be submitted to Maitland City Council (MCC).

The report demonstrates compliance with Planning for Bushfire Protection 2019 (NSW RFS, 2019) and AS3959-2018 Construction of Buildings in Bush Fire Prone Areas.

This assessment aims to consider and assess the bushfire hazard and associated potential threats relevant to the proposal. Recommendations are provided with regard to fuel management, access, provision of emergency services, building protection and construction standards to facilitate an acceptable level of bushfire protection.

In summary, the following is recommended to enable the proposal to meet the relevant legislative requirements for the proposed subdivision:

- An APZ between the woodland forest to the North of the site is already established and maintained by Raymond Terrace Road.
- Assessment in accordance with PBP 2019 has shown that future dwellings within the lots will be able to comply with the required BAL-29 or less. In any case, future dwellings within the site will be assessed under Section 4.14 of EP&A Act for each individual dwelling upon application.
- Reticulated water is extended into the site. The development will be linked to the water pressure mains and the proposed internal fire hydrant spacing, sizing and pressures are to comply with AS 2419.1-2005 Fire Hydrant Installations – System design, installation and commissioning (2017).
- The proposed access internal road is to meet either the performance criteria or acceptable solutions as detailed in Section 6 of this report and Section 4.1.3 (1) of PBP.
- Fencing – All new fencing and gates shall be constructed in accordance with the NSW Rural Fire Service Guideline: Fast Fact – Fences or Gates in Bushfire Prone Areas.
- Home owners should prepare a Bush Fire Survival Plan refer to the RFS Website http://www.rfs.nsw.gov.au/file_system/attachments/Attachment_Bush_FireSurvivalPlan.pdf

Sarah Jones  
B.Env.Sc., G.Dip.DBPA (Design for Bushfire Prone Areas)
FPA BPAD-A Certified Practitioner (Certification Number BPD-PA-26512)
Ecologist / Bushfire Planner



Terms & Abbreviations

Abbreviation	Meaning
APZ	Asset Protection Zone
AS2419 -2005	Australian Standard – Fire Hydrant Installations
AS3959-2018	Australian Standard – Construction of Buildings in Bush Fire Prone Areas
BCA	Building Code of Australia
BPA	Bush Fire Prone Area (Also Bushfire Prone Land)
BFPL Map	Bush Fire Prone Land Map
BPMs	Bush Fire Protection Measures
BFSA	Bush Fire Safety Authority
CC	Construction Certificate
MCC	Maitland City Council
<i>EPA Act</i>	<i>NSW Environmental Planning and Assessment Act 1979</i>
FFDI	Forest Fire Danger Index
FMP	Fuel Management Plan
ha	hectare
IPA	Inner Protection Area
LGA	Local Government Area
OPA	Outer Protection Area
PBP	Planning for Bushfire Protection 2019
PoM	Plan of Management
RF Act	Rural Fires Act 1997
RF Regulation	Rural Fires Regulation



CONTENTS

1	INTRODUCTION	1
1.1	Site Particulars	1
1.2	Description of the Proposal	3
1.3	Legislative Requirements	3
1.4	Objectives of Assessment	4
2	METHODOLOGY	5
2.1	Vegetation Assessment	5
2.2	Slope Assessment	5
3	SITE ASSESSMENT	6
3.1	Vegetation & Slope Assessment	6
4	BUSHFIRE PROTECTION ASSESSMENT	7
4.1	Asset Protection Zones (APZ)	7
5	DWELLING DESIGN & CONSTRUCTION	8
5.1	Determination of Bushfire Attack Levels	9
6	COMPLIANCE	12
7	CONCLUSION & RECOMMENDATIONS	20
8	BIBLIOGRAPHY	21
	APPENDIX A PROPOSED SITE PLANS	A-1
	APPENDIX B ASSET PROTECTION ZONES	B-1
	APPENDIX C BUSHFIRE PRONE LAND	C-1

TABLES

Table 3-1: Vegetation Classification	6
Table 4-1: Recommended APZs for Proposed dwellings	7
Table 5-1: Determination of BALs for Future dwellings within site	9
Table 6-1: Proposed Dwelling Compliance with Development Standards	12

FIGURES

Figure 1-1: Site Location	2
Figure 5-1 APZ Map	11



I INTRODUCTION

A Bushfire Threat Assessment Report (BTA) has been prepared by Firebird ecoSultants Pty Ltd at the request of Hunter Land Pty Ltd for a proposed residential subdivision at 512 Raymond Terrace road, Thornton, hereafter referred to as the “site” (refer to Figure 1-1 for site locality). Refer to Appendix A for Proposed Site Plans.

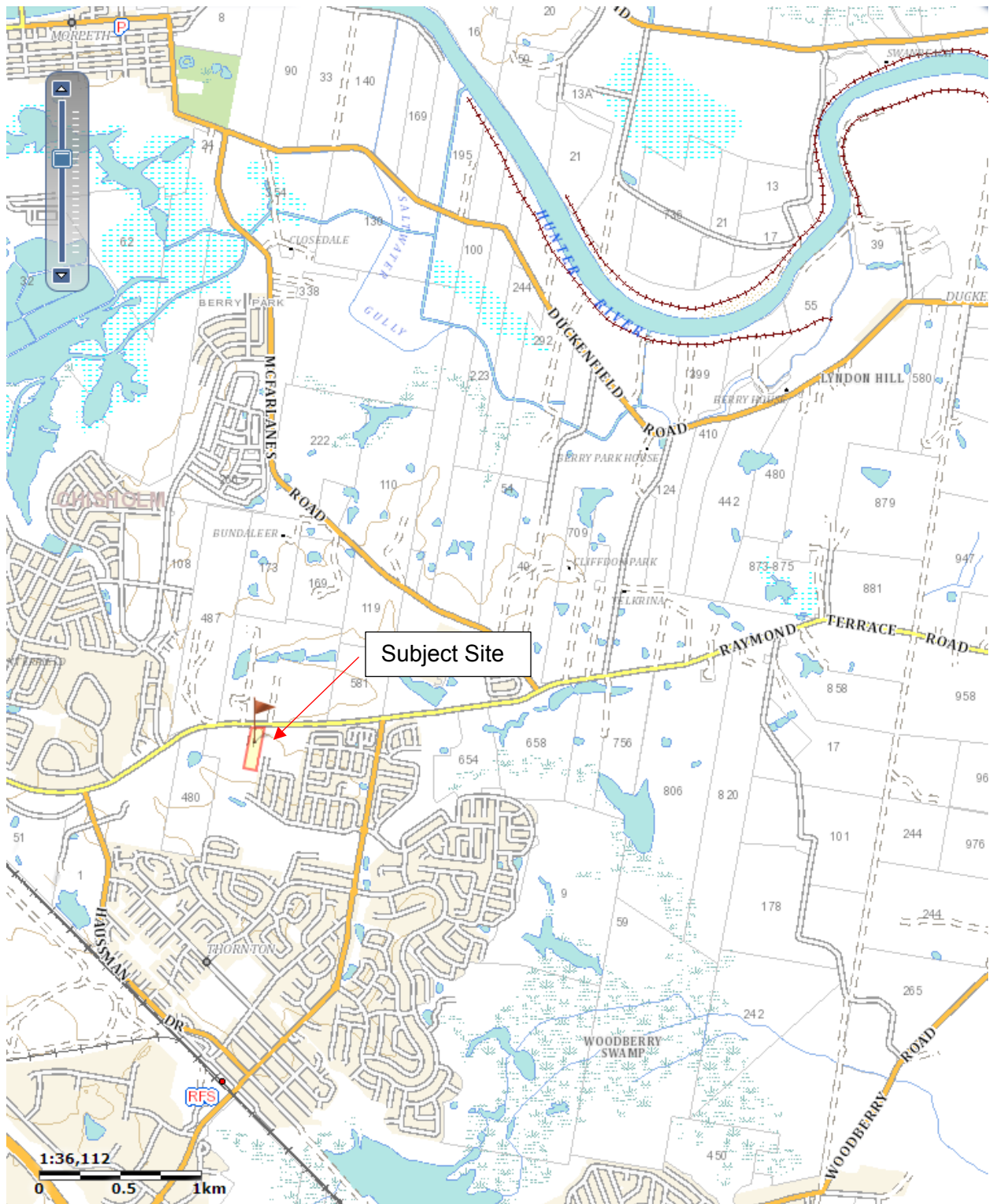
This BTA is suitable for submission with a Development Application (DA) and provides information on measures that will enable the development to comply with ‘Planning for Bushfire Protection’ (NSW RFS, 2019), hereafter referred to as PBP (RFS, 2019).

This assessment aims to consider and assess the bushfire hazard and associated potential threats relevant to such a proposal, and to outline the minimum mitigative measures which would be required in accordance with the provisions of the Environmental Planning and Assessment Amendment (Planning for Bushfire Protection) Regulation 2007 and the Rural Fires Amendment Regulation 2007 (RF Amendment Regulation 2007).

I.1 Site Particulars

Locality:	512 Raymond Terrace Road, Thornton NSW 2322
LGA:	Maitland City Council
Current Land Use:	Residential property
Forest Danger Index:	100 FFDI

Figure 1-1: Site Location

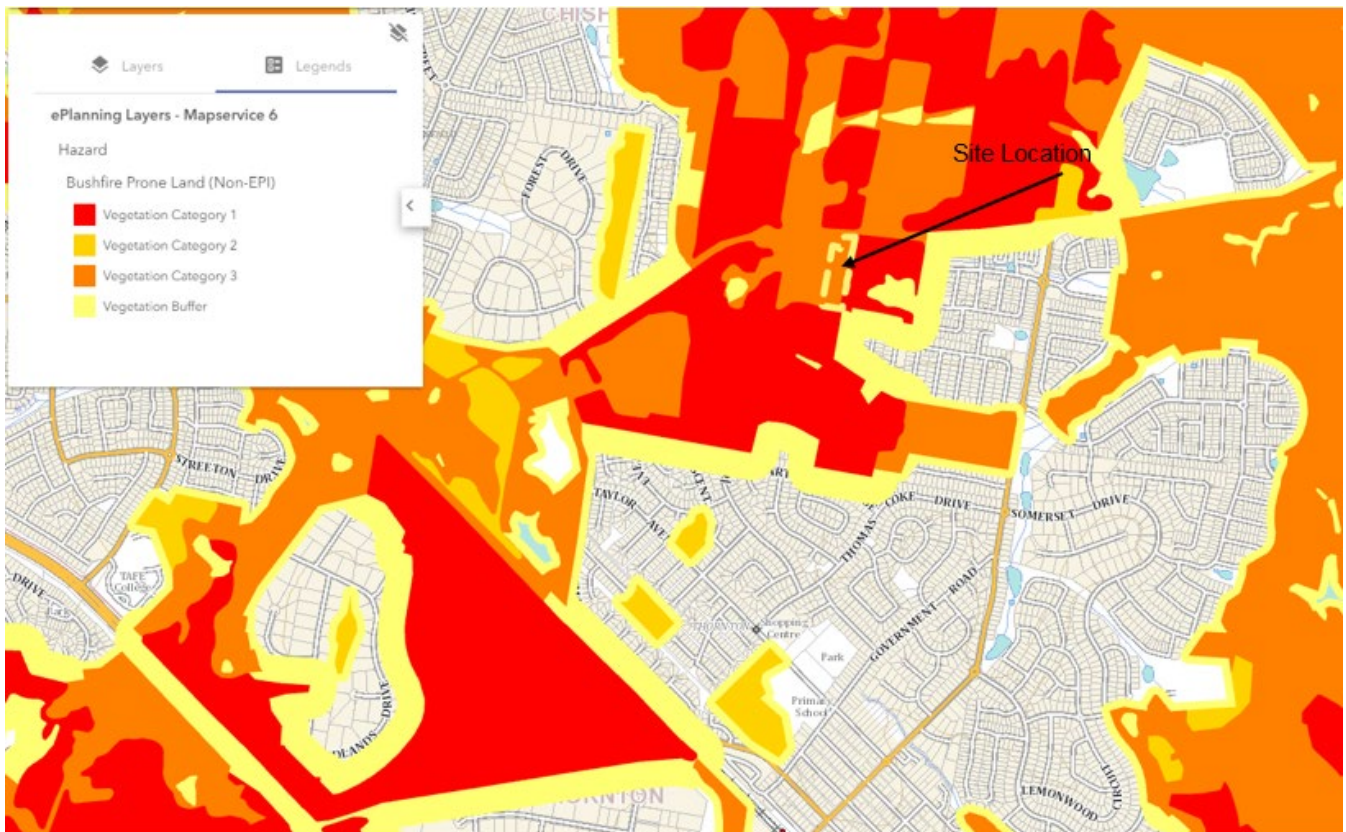


1.2 Description of the Proposal

This DA relates to the proposal for a residential subdivision. Refer to Appendix A for proposed plans.

1.3 Legislative Requirements

The Site has been mapped as Bush Fire Prone Land Map (BFPLM) by MCC.



This report forms part of the supporting documentation for a Development Application (DA) to be submitted to MCC.

This BTA has been prepared using current legislative requirements and associated guidelines for assessment of bushfire protection, these being:

- PBP (RFS, 2019) and;
- AS3959-2018 Construction of Buildings in Bushfire Prone Area.



I.4 Objectives of Assessment

This report has been prepared to address the requirements of Clause 44 of the Rural Fires Regulation. This BTA also addresses the six key Bush Fire Protection Measures (BFRMs) in a development assessment context being:

- The provision of clear separation of buildings and bush fire hazards, in the form of fuel-reduced APZ (and their components being Inner Protection Areas (IPA's) and Outer Protection Areas (OPA's));
- Sitting and design of the proposal;
- Construction standards;
- Appropriate access standards for residents, fire-fighters, emergency workers and those involved in evacuation;
- Adequate water supply and pressure, and utility services; and
- Suitable landscaping, to limit fire spreading to a building.



2 METHODOLOGY

2.1 Vegetation Assessment

Vegetation surveys and vegetation mapping carried out on the site has been undertaken as follows:

- Aerial Photograph Interpretation to map vegetation cover and extent
- Confirmation of the vegetation assemblage typology present.

2.2 Slope Assessment

Slope assessment has been undertaken as follows:

- Aerial Photograph Interpretation in conjunction with analysis of electronic contour maps with a contour interval of 2m.



3 SITE ASSESSMENT

The following assessment has been undertaken in accordance with the requirements of PBP (RFS, 2019).

3.1 Vegetation & Slope Assessment

In accordance with PBP (RFS 2019), an assessment of the vegetation over a distance of 140m in all directions from the site was undertaken. Vegetation that may be considered a bushfire hazard was identified in all directions from the site. This assessment is depicted in Table 3-1 and Figure 3-1 that shows the vegetation post development.

In accordance with PBP (RFS 2019), an assessment of the slope that the vegetation considered a bushfire hazard was undertaken and the results are presented in Table 3.1 below.

Table 3-1: Vegetation Classification

Proposed Dwelling		
Direction	Vegetation Type	Slope
North	Woodland	Upslope
East	Managed land – Future Residential Development	N/A
South	Managed land – Future Residential Development	N/A
West	Managed land – Future Residential Development	N/A

4 BUSHFIRE PROTECTION ASSESSMENT

4.1 Asset Protection Zones (APZ)

The PBP (RFS, 2019) guidelines has been used to determine the widths of the APZs required for habitable buildings within the site using the vegetation and slope data identified in Section 3-1 of this report.

The site lies within Maitland Local Government Area and therefore is assessed under a FDI rating of 100. Using the results from the Site Assessment (section 3-1 of this report) the deemed to satisfy APZ requirements for the proposed buildings within the site was determined using Table A1.12.2 in PBP (RFS, 2019). Refer to Table 4-1 and Figure 4-1 for required APZs for the proposed habitable buildings.

Table 4-1: Recommended APZs for Proposed dwellings

Direction from Building Envelope	Vegetation Classification within 140m	Effective Slope (within 100m)	APZ to be Provided ¹	Width of allowable OPA ²	Comment
North	Woodland Vegetation	Upslope	26m	10m	Acceptable solution in accordance with PBP (RFS, 2019)
East	Managed land – Future residential development	N/A	N/A	10m	Acceptable solution in accordance with PBP (RFS, 2019)
South	Managed land – Future residential development	N/A	N/A	10m	Acceptable solution in accordance with PBP (RFS, 2019)
West	Managed land – Future residential development	N/A	N/A	10m	Acceptable solution in accordance with PBP (RFS, 2019)

¹ APZ as per Table A1.12.2 in PBP 20.19

² OPA; Outer Protection area as per Table A1.12.4 in PBP 2019 (See Appendix B here).



5 DWELLING DESIGN & CONSTRUCTION

Building design and the materials used for construction of future dwellings should be chosen based on the information contained within AS3959-2018, and accordingly the designer / architect should be made aware of this recommendation. It may be necessary to have dwelling plans checked by the architect involved to ensure that the proposed dwellings meet the relevant Bushfire Attack Level (BAL) as detailed in AS3959-2018.

The determinations of the appropriate BAL are based upon parameters such as weather modelling, fire-line intensity, flame length calculations, as well as vegetation and fuel load analysis. The determination of the construction level is derived by assessing the:

- Relevant FFDI = 100
- Flame temperature
- Slope
- Vegetation classification; and
- Building location.

The following BAL, based on heat flux exposure thresholds, are used in the standard:

(a) **BAL – LOW** The risk is considered to be **VERY LOW**

There is insufficient risk to warrant any specific construction requirements but there are still some risks.

(b) **BAL – 12.5** The risk is considered to be **LOW**

There is a risk of ember attack.

The construction elements are expected to be exposed to a heat flux not greater than 12.5 k/m².

(c) **BAL – 19** The risk is considered to be **MODERATE**

There is a risk of ember attack and burning debris ignited by wind borne embers and a likelihood of exposure to radiant heat.

The construction elements are expected to be exposed to a heat flux not greater than 19 kW/m².

(d) **BAL-29** The risk is considered to be **HIGH**

There is an increased risk of ember attack and burning debris ignited by windborne embers and a likelihood of exposure to an increased level of radiant heat.



The construction elements are expected to be exposed to a heat flux no greater than 29 kW/m².

(e) **BAL-40** The risk is considered to be **VERY HIGH**

There is much increased risk of ember attack and burning debris ignited by windborne embers, a likelihood of exposure to a high level of radiant heat and some likelihood of direct exposure to flames from the fire front.

The construction elements are expected to be exposed to a heat flux no greater than 40 kW/m².

(f) **BAL-FZ** The risk is considered to be **EXTREME**

There is an extremely high risk of ember attack and burning debris ignited by windborne embers, a likelihood of exposure to an extreme level of radiant heat and direct exposure to flames from the fire front.

The construction elements are expected to be exposed to a heat flux greater than 40 kW/m².

5.1 Determination of Bushfire Attack Levels

Using a FFDI of 100, the information relating to vegetation, slope and according to Table A1.12.5 of PBP 2019 that determined the appropriate BAL. The results from this bush fire risk assessment are detailed below in Table 4-1–Bush Fire Attack Assessment and Figure 4-1 shows the vegetation.

Table 5-1: Determination of BALs for Future dwellings within site

Vegetation Type & Direction	Separation Distance from vegetation	Bushfire Attack Level (BAL)	Construction Section
Woodland to the North	12-<18m	BAL-29	Sect 3 & 7 of AS3959
	18-<26m	BAL-19	Sect 3 & 6 of AS3959
	26-<100	BAL-12.5	Sect 3 & 5 of AS3959
	>100m	BAL-LOW	No construction requirements



Given, the information in Table 5-1 above any future dwellings within the lots will be able to comply with AS3959-2018. These will be subject to further assessment under Section 4.14 of the EP&A Act depending on location of future dwellings and retained vegetation within the site.



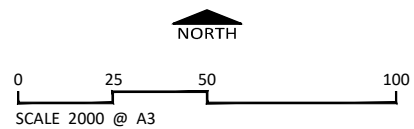
Note:
 Boundaries are not survey accurate.
 Although all reasonable care has been taken to ensure the information shown on this map is up to date and accurate, no guarantee is given that the information portrayed is free from error or omission. Please verify the accuracy of all information prior to use.

FIGURE 1-1: LOCALITY & ASSET PROTECTION ZONES

CLIENT Client
 No.512 Raymond Terrace Road Thornton
 DATE 28 October 2021

Legend

- Subject Site
- 100m Buffer
- 26m APZ
- Woodland
- Tree



Firebird ecoSultants Pty Ltd
 ABN - 16 105 985 993
 Level 1, 146 Hunter Street, Newcastle NSW 2300
 P O Box 354 Newcastle NSW 2300



DISCLAIMER
 This document and the information shown shall remain the property of Firebird ecoSultants Pty Ltd. The document may only be used for the purpose for which it was supplied and in accordance with the terms of engagement for the commission. Unauthorised use of this document in any way is prohibited.



6 COMPLIANCE

The proposal is for a residential subdivision and therefore development standards apply. Table 5-1 details the proposed compliance with Development Standards for Residential and Rural Residential Subdivisions.

Table 6-1: Proposed Dwelling Compliance with Development Standards

Acceptable Solutions	Performance Criteria	Compliance
Asset Protection Zones		
> APZs are provided in accordance with Tables A1.12.2 and A1.12.3 based on the FFDI.	potential building footprints must not be exposed to radiant heat levels exceeding 29 kW/m ² on each proposed lot.	N/A – An APZ is already established by Raymond Terrace Road
> APZs are managed in accordance with the requirements of Appendix 4.	APZs are managed and maintained to prevent the spread of a fire towards the building.	Complies with Acceptable Solution – APZs on site are to be managed in accordance with Appendix 4 of the PBP 2019.
> APZs are wholly within the boundaries of the development site	the APZs is provided in perpetuity	N/A – An APZ is already established by Raymond Terrace Road
> APZs are located on lands with a slope less than 18 degrees.	APZ maintenance is practical, soil stability is not compromised and the potential for crown fires is minimised.	N/A – An APZ is already established by Raymond Terrace Road
Landscaping		
> landscaping is in accordance with Appendix 4; and fencing is constructed in accordance with section 7.6.	landscaping is designed and managed to minimise flame contact and radiant heat to buildings, and the potential for wind-driven embers to cause ignitions.	Complies with Acceptable Solution – All landscaping within the site will meet the requirements of the acceptable solution.
Access (General Requirements)		



<ul style="list-style-type: none"> › property access roads are two-wheel drive, all-weather roads; › perimeter roads are provided for residential subdivisions of three or more allotments; › subdivisions of three or more allotments have more than one access in and out of the development; › traffic management devices are constructed to not prohibit access by emergency services vehicles; › maximum grades for sealed roads do not exceed 15 degrees and an average grade of not more than 10 degrees or other gradient specified by road design standards, whichever is the lesser gradient; › all roads are through roads; › dead end roads are not recommended, but if unavoidable, are not more than 200 metres in length, incorporate a minimum 12 metres outer radius turning circle, and are clearly sign posted as a dead end; › where kerb and guttering is provided on perimeter roads, roll top kerbing should be used to the hazard side of the road; › where access/egress can only be achieved through forest, woodland and heath vegetation, secondary access shall be 	<p>firefighting vehicles are provided with safe, all-weather access to structures.</p>	<p>Complies with Acceptable Solution – All roads within the site are designed to meet the requirements of the acceptable solution.</p>
--	--	---



<p>provided to an alternate point on the existing public road system; and</p> <p>one way only public access roads are no less than 3.5 metres wide and have designated parking bays with hydrants located outside of these areas to ensure accessibility to reticulated water for fire suppression.</p>		
<p>> the capacity of perimeter and non-perimeter road surfaces and any bridges/causeways is sufficient to carry fully loaded firefighting vehicles (up to 23 tonnes); bridges/causeways are to clearly indicate load rating.</p>	<p>the capacity of access roads is adequate for firefighting vehicles.</p>	<p>Complies with Acceptable Solution – Raymond Terrace Road occurs to the north of the site, no perimeter roads are required to the east, south and west due to residential development.</p>
<p>> hydrants are located outside of parking reserves and road carriageways to ensure accessibility to reticulated water for fire suppression;</p> <p>> hydrants are provided in accordance with the relevant clauses of AS 2419.1:2017 - Fire hydrant installations System design, installation and commissioning; and</p> <p>there is suitable access for a Category 1 fire appliance to within 4m of the static water supply where no reticulated supply is available.</p>	<p>there is appropriate access to water supply.</p>	<p>Complies with Acceptable Solution – Hydrants are to be positions appropriately across the site.</p>

Perimeter Roads



<ul style="list-style-type: none"> > are two-way sealed roads; > minimum 8m carriageway width kerb to kerb; > parking is provided outside of the carriageway width; > hydrants are located clear of parking areas; > are through roads, and these are linked to the internal road system at an interval of no greater than 500m; > curves of roads have a minimum inner radius of 6m; > the maximum grade road is 15 degrees and average grade of not more than 10 degrees; > the road crossfall does not exceed 3 degrees; and <p style="padding-left: 40px;">a minimum vertical clearance of 4m to any overhanging obstructions, including tree branches, is provided.</p>	<p>access roads are designed to allow safe access and egress for firefighting vehicles while residents are evacuating as well as providing a safe operational environment for emergency service personnel during firefighting and emergency management on the interface.</p>	<p>Can Comply with Acceptable Solution – All access roads to the site are designed to meet the requirements of the acceptable solution.</p>
<h3 style="margin: 0;">Non-Perimeter Roads</h3>		
<ul style="list-style-type: none"> > minimum 5.5m carriageway width kerb to kerb; > parking is provided outside of the carriageway width; > hydrants are located clear of parking areas; 	<p>access roads are designed to allow safe access and egress for firefighting vehicles while residents are evacuating.</p>	<p>Complies with Acceptable Solution – All access roads to the site are designed to meet the requirements of the acceptable solution.</p>



<ul style="list-style-type: none"> > roads are through roads, and these are linked to the internal road system at an interval of no greater than 500m; > curves of roads have a minimum inner radius of 6m; > the road crossfall does not exceed 3 degrees; and a minimum vertical clearance of 4m to any overhanging obstructions, including tree branches, is provided. 		
<h3>Property Access</h3>		
<ul style="list-style-type: none"> > There are no specific access requirements in an urban area where an unobstructed path (no greater than 70m) is provided between the most distant external part of the proposed dwelling and the nearest part of the public access road (where the road speed limit is not greater than 70kph) that supports the operational use of emergency firefighting vehicles. In circumstances where this cannot occur, the following requirements apply: > minimum 4m carriageway width; > in forest, woodland and heath situations, rural property access roads have passing bays every 200m that are 20m long by 2m wide, making a minimum trafficable width of 6m at the passing bay; 	<p>firefighting vehicles can access the dwelling and exit the property safely.</p>	<p>Complies with Acceptable Solution – All future lots are to be connected to a public road by a driveway <70m</p>



<ul style="list-style-type: none">› a minimum vertical clearance of 4m to any overhanging obstructions, including tree branches;› provide a suitable turning area in accordance with Appendix 3;› curves have a minimum inner radius of 6m and are minimal in number to allow for rapid access and egress;› the minimum distance between inner and outer curves is 6m;› the crossfall is not more than 10 degrees;› maximum grades for sealed roads do not exceed 15 degrees and not more than 10 degrees for unsealed roads; and› a development comprising more than three dwellings has access by dedication of a road and not by right of way. <p>Note: Some short constrictions in the access may be accepted where they are not less than 3.5m wide, extend for no more than 30m and where the obstruction cannot be reasonably avoided or removed. The gradients applicable to public roads also apply to community style development property access roads in addition to the above.</p>		
--	--	--



Water Supplies

<ul style="list-style-type: none"> › reticulated water is to be provided to the development where available; › a static water and hydrant supply is provided for non-reticulated developments or where reticulated water supply cannot be guaranteed; and <p style="padding-left: 40px;">static water supplies shall comply with Table 5.3d.</p>	<p>adequate water supplies are provided for firefighting purposes.</p>	<p>Complies with Acceptable Solution – All lots are to be connected to reticulated water.</p>
<ul style="list-style-type: none"> › fire hydrant, spacing, design and sizing complies with the relevant clauses of Australian Standard AS 2419.1:2017; › hydrants are not located within any road carriageway; and › reticulated water supply to urban subdivisions uses a ring main system for areas with perimeter roads. 	<p>Water supplies are located at regular intervals; and</p> <p>the water supply is accessible and reliable for firefighting operations.</p>	<p>Can Comply with Acceptable Solution – Hydrants are to be positions appropriately across the site.</p>
<ul style="list-style-type: none"> › fire hydrant flows and pressures comply with the relevant clauses of AS 2419.1:2017. 	<p>flows and pressure are appropriate.</p>	<p>Complies with Acceptable Solution – Flows and pressure assumed</p>
<ul style="list-style-type: none"> › all above-ground water service pipes are metal, including and up to any taps; and <p>above-ground water storage tanks shall be of concrete or metal.</p>	<p>the integrity of the water supply is maintained.</p>	<p>Complies with Acceptable Solution – All above ground water service pipes will meet the requirements.</p>



Electricity Services

<ul style="list-style-type: none"> > where practicable, electrical transmission lines are underground; > where overhead, electrical transmission <ul style="list-style-type: none"> > lines are proposed as follows: lines are installed with short pole spacing of 30m, unless crossing gullies, gorges or riparian areas; and <p style="margin-left: 40px;">no part of a tree is closer to a power line than the distance set out in ISSC3 Guideline for Managing Vegetation Near Power Lines.</p>	<p>location of electricity services limits the possibility of ignition of surrounding bush land or the fabric of buildings.</p>	<p>Complies with Acceptable Solution – All future dwellings are able to meet the requires for electricity services.</p>
---	---	--

Gas Services

<ul style="list-style-type: none"> > reticulated or bottled gas is installed and maintained in accordance with AS/NZS 1596:2014 - The storage and handling of LP Gas, the requirements of relevant authorities, and metal piping is used; > all fixed gas cylinders are kept clear of all flammable materials to a distance of 10m and shielded on the hazard side; > connections to and from gas cylinders are metal; > polymer-sheathed flexible gas supply lines are not used; and > above-ground gas service pipes are metal, including and up to any outlets. 	<p>location and design of gas services will not lead to ignition of surrounding bushland or the fabric of buildings.</p>	<p>Can Complies with Acceptable Solution – All future dwelling are able to meet the requires for gas service</p>
--	--	---

7 CONCLUSION & RECOMMENDATIONS

In summary, a Bushfire Risk Assessment has been undertaken for a proposed residential subdivision at 512 Raymond Terrace road, Thornton NSW 2322. The report forms part of the supporting documentation for a Development Application (DA) to be submitted to MCC.

If the recommendations contained within this report are duly considered and incorporated, it is considered that the fire hazard present is containable to a level necessary to provide an adequate level of protection to life and property on the subdivision. In summary, the following is recommended to enable the proposal to meet the relevant legislative requirements for the proposed subdivision:

- An APZ between the woodland forest to the north of the site, is already established and maintained by Raymond Terrace road.
- Assessment in accordance with PBP 2019 has shown that future dwellings within the lots will be able to comply with BAL-29 or less. In any case, future dwellings within the site will be assessed under Section 4.14 of EP&A Act for each individual dwelling upon application.
- Reticulated water is extended into the site. The development will be linked to the water pressure mains and the proposed internal fire hydrant spacing, sizing and pressures are to comply with AS 2419.1-2005 Fire Hydrant Installations – System design, installation and commissioning (2005).
- The proposed access internal road is to meet either the performance criteria or acceptable solutions as detailed in Section 6 of this report and Section 4.1.3 (1) of PBP.
- Fencing – All new fencing and gates shall be constructed in accordance with the NSW Rural Fire Service Guideline: Fast Fact – Fences or Gates in Bushfire Prone Areas.
- Home owners should prepare a Bush Fire Survival Plan refer to the RFS Website http://www.rfs.nsw.gov.au/file_system/attachments/Attachment_Bush_FireSurvivalPlan.pdf

Provided the recommendations stated above are implemented in full Firebird ecoSultants Pty Ltd is of the opinion that the proposed development is able to meet the aims and objectives of PBP (RFS, 2019).



8 BIBLIOGRAPHY

Department of Bush Fire Services (undated). *Bush Fire Readiness Checklist*.

NSWFB (1988). *Hazard Reduction for the Protection of Buildings in Bushland Areas*. New South Wales Fire Brigades.

NSW Rural Fire Service (1997). *Bush Fire Protection for New and Existing Rural Properties*. September 1997, NSW Government.

NSW Rural Fire Service (2006). *Planning for Bushfire Protection – A Guide for Councils, Planners, Fire Authorities, Developers and Home Owners*.

NSW Rural Fire Service (2019). *Planning for Bushfire Protection – A Guide for Councils, Planners, Fire Authorities, Developers and Home Owners*.

NSW Rural Fire Service (2005). Standards for Asset Protection Zones. NSW Rural Fire Service.

NSW Rural Fire Service (2002). *Circular 16/2002: Amendments to the Rural Fires Act 1997 – hazard reduction and planning requirements*.

Planning NSW & NSW Rural Fire Service (2001). *Planning for Bushfire Protection – A Guide for Councils, Planners, Fire Authorities, Developers and Home Owners*.

Ramsay, GC and Dawkins, D (1993). *Building in Bushfire-prone Areas – Information and Advice*. CSIRO and Standards Australia.

Rural Fires and Environmental Assessment Legislation Amendment Act 2002.

Standards Australia (2018). *AS 3959 – 2018: Construction of Buildings in Bushfire-prone Areas*.

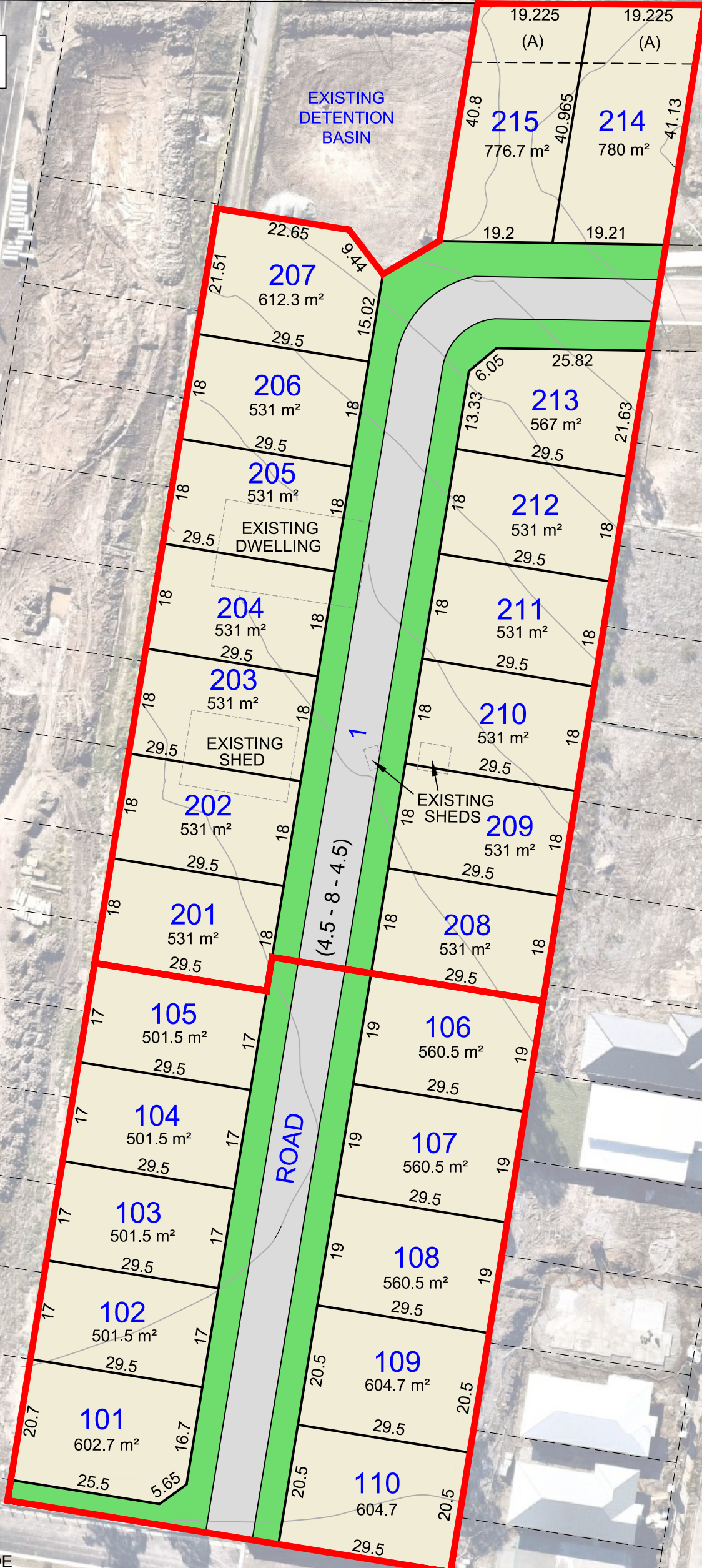
APPENDIX A PROPOSED SITE PLANS



RAYMOND TERRACE ROAD

STAGE 1 - LOTS 101 TO 110
STAGE 2 - LOTS 201 TO 215

EXISTING
DETENTION
BASIN



(A) - POSITIVE COVENANT 10 WIDE

GENERAL RESTRICTIONS ON THE USE OF LAND EFFECTS
ALL LOTS ALL AREAS, DIMENSIONS & EASEMENTS ARE
SUBJECT TO FINAL SURVEY & APPROVALS

REV.	DATE	AMENDMENT(S)	SUR	DFT	CHK
A	05.10.21	ORIGINAL ISSUE	-	JD	AL
B	11.08.22	UPDATED INFORMATION	-	JD	AL
C	17.08.22	LANDSCAPE PLANS ADDED	-	JD	AL

DELFS LASCELLES
CONSULTING SURVEYORS

260 MAITLAND ROAD, T: (02) 4964 4886
MAYFIELD NSW 2304 E: admin@delacs.com.au
ABN: 28 164 260 100 delacs.com.au

CAD REF: 21664- SALE C

PROPOSED PLAN OF SUBDIVISION OF LOT 101 DP 1279275

SITE ADDRESS:
512 RAYMOND TERRACE ROAD
RAYMOND TERRACE

CLIENT: TBC

POSITION DATUM: N/A
ORIENTATION: MGA (GROUND)
EASTING: -
NORTHING: -
CLASS: - ORDER: -
HEIGHT DATUM: N/A
CLASS: - ORDER: -
RL: AHD DATE: -



SURVEYED - DRAFTED JD - CHECKED AL

SCALE 1:800 PAGE SIZE A3 DATE 17.08.22

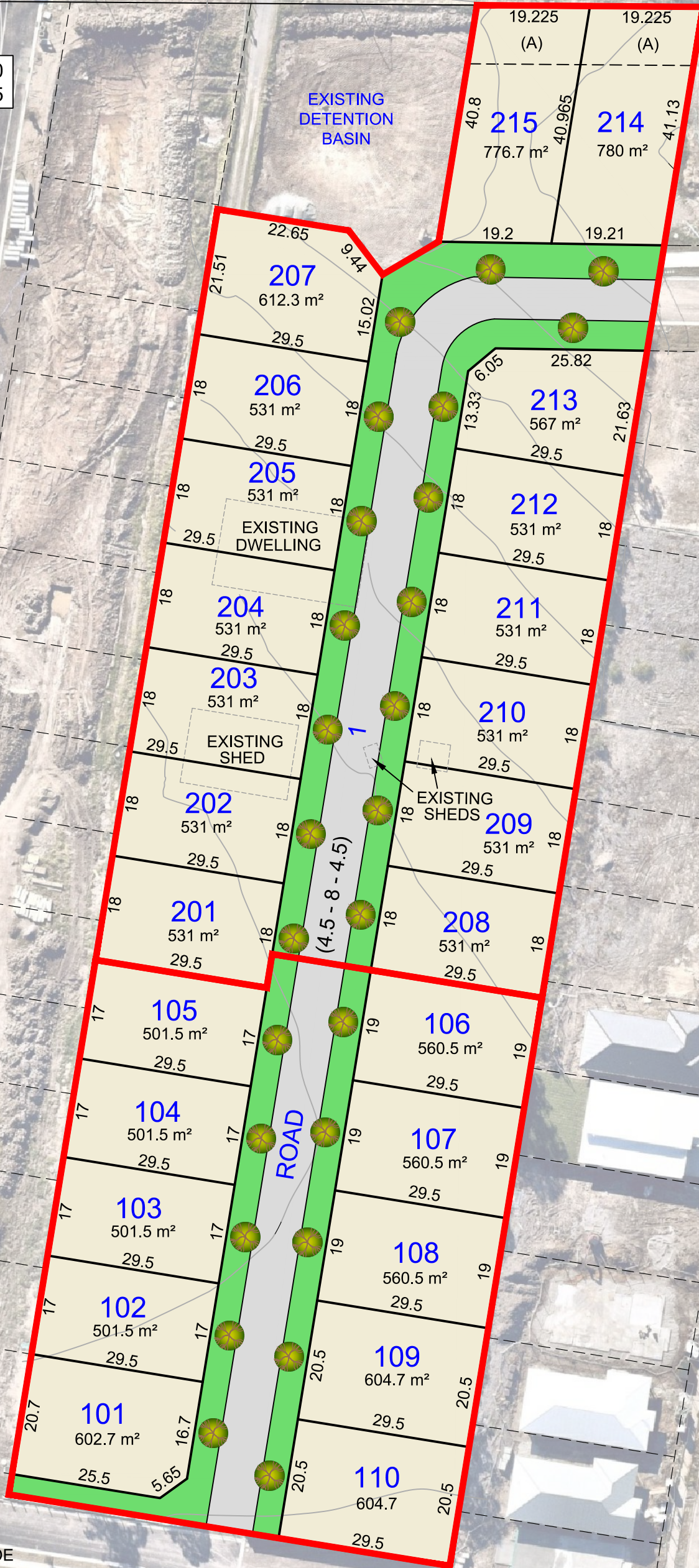
SHEET 1 REV. C PROJECT No. 21664



RAYMOND TERRACE ROAD

STAGE 1 - LOTS 101 TO 110
STAGE 2 - LOTS 201 TO 215

EXISTING
DETENTION
BASIN



(A) - POSITIVE COVENANT 10 WIDE

GENERAL RESTRICTIONS ON THE USE OF LAND EFFECTS
ALL LOTS ALL AREAS, DIMENSIONS & EASEMENTS ARE
SUBJECT TO FINAL SURVEY & APPROVALS

- TRISTANIOPSIS LAURINA

REV.	DATE	AMENDMENT(S)	SUR	DFT	CHK
A	05.10.21	ORIGINAL ISSUE	-	JD	AL
B	11.08.22	UPDATED INFORMATION	-	JD	AL
C	17.08.22	LANDSCAPE PLANS ADDED	-	JD	AL

DELFS LASCELLES
CONSULTING SURVEYORS

260 MAITLAND ROAD, T: (02) 4964 4886
MAYFIELD NSW 2304 E: admin@delacs.com.au
ABN: 28 164 260 100 delacs.com.au

CAD REF: 21664- SALE C

**PROPOSED PLAN OF
SUBDIVISION OF
LOT 101 DP 1279275
LANDSCAPE PLAN SHEET 2**

SITE ADDRESS:
512 RAYMOND TERRACE ROAD
RAYMOND TERRACE

CLIENT:
TBC

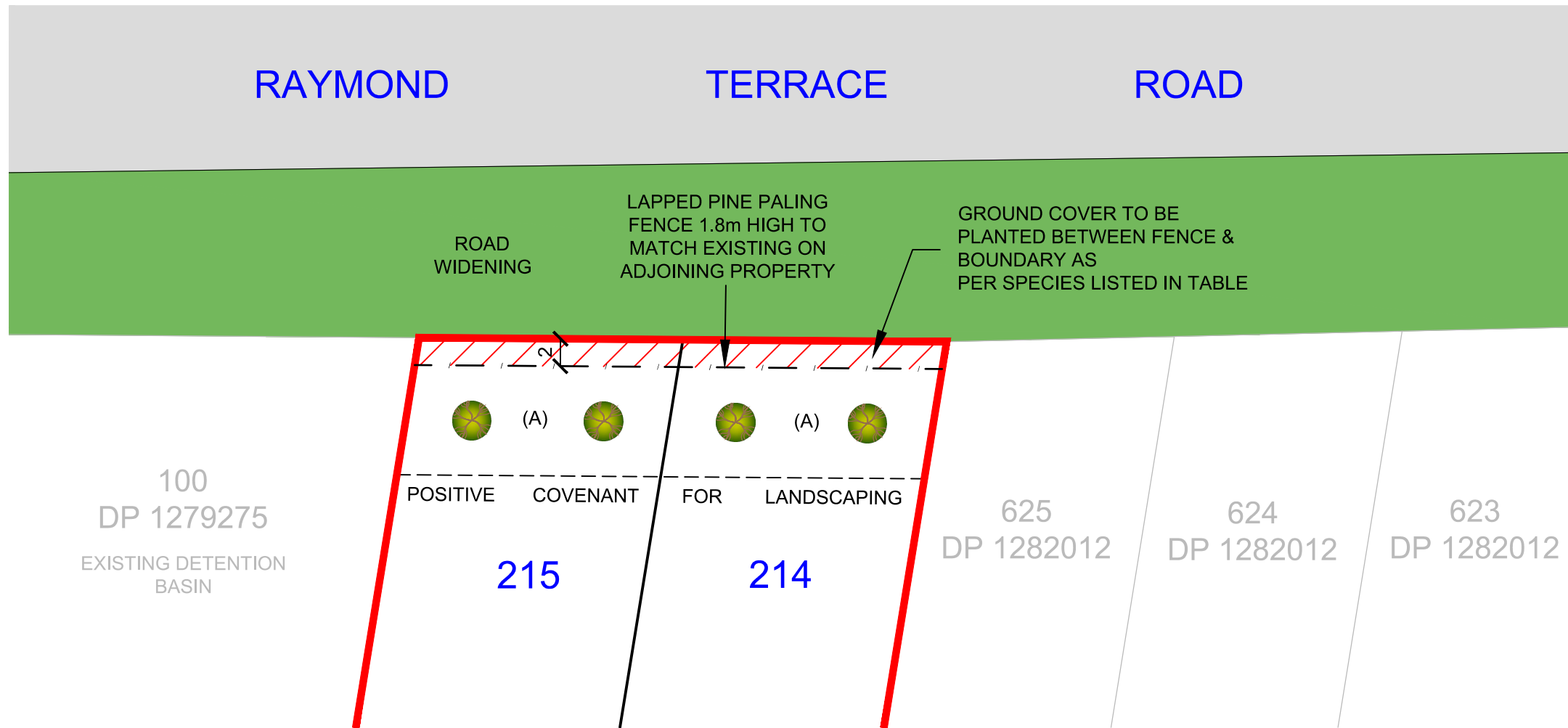
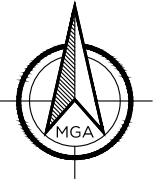
POSITION DATUM: N/A
ORIENTATION: MGA (GROUND)
EASTING: -
NORTHING: -
CLASS: - ORDER: -
HEIGHT DATUM: N/A
CLASS: - ORDER: -
RL: AHD DATE: -

SURVEYED - DRAFTED JD - CHECKED AL

SCALE 1:800 PAGE SIZE A3 DATE 17.08.22



SHEET 2 REV. C PROJECT No. 21664





GROUND COVER PLANTING

BOTANICAL NAME	COMMON NAME
ACACIA FALCATA	FALCTE WATTLE
GOODENIA ROTUNDIFOLIA	STAR GOODENIA
JUNCUS CONTINUUS	SAND RUSH
CALLISTEMON CITRINUS	CRIMSON BOTTLEBRUSH
CALLISTEMON PALLIDUS	SILVER CLOUD
MELALEUCA QUINQUENERVIA	BROAD-LEAVED PAPERBARK
BURSARIA SPINOSA	NATIVE BLACKTHORN
THEMEDA AUSTRALIS	KANGAROO GRASS
HAKEA SERICEA	NEEDLEBUSH


 - TRISTANIOPSIS LAURINA
 AREA SUBJECT TO GROUND COVER PLANTING

REV.	DATE	AMENDMENT(S)	SUR	DFT	CHK
A	05.10.21	ORIGINAL ISSUE	-	JD	AL
B	11.08.22	UPDATED INFORMATION	-	JD	AL
C	17.08.22	LANDSCAPE PLANS ADDED	-	JD	AL

DELFS LASCELLES
 CONSULTING SURVEYORS
 260 MAITLAND ROAD, MAYFIELD NSW 2304
 T: (02) 4964 4886 E: admin@delacs.com.au
 ABN: 28 164 260 100 delacs.com.au

PROPOSED PLAN OF SUBDIVISION OF LOT 101 DP 1279275 LANDSCAPE PLAN SHEET 3

SITE ADDRESS:
 512 RAYMOND TERRACE ROAD
 RAYMOND TERRACE
 CLIENT:
 TBC

CAD REF: 21664- SALE C


POSITION DATUM: N/A
 ORIENTATION: MGA (GROUND)
 EASTING: -
 NORTHING: -
 CLASS: -
 ORDER: -
 HEIGHT DATUM: N/A
 CLASS: -
 ORDER: -
 RL: AHD DATE: -

SURVEYED	DRAFTED	CHECKED
-	JD	AL
SCALE	PAGE SIZE	DATE
1:400	A3	17.08.22
SHEET	REV.	PROJECT No.
3	C	21664

**APPENDIX B
(PBP 2019)**

ASSET PROTECTION ZONES



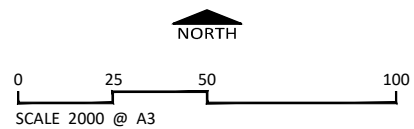
Note:
 Boundaries are not survey accurate.
 Although all reasonable care has been taken to ensure the information shown on this map is up to date and accurate, no guarantee is given that the information portrayed is free from error or omission. Please verify the accuracy of all information prior to use.

FIGURE 1-1: LOCALITY & ASSET PROTECTION ZONES

CLIENT Client
 No.512 Raymond Terrace Road Thornton
 DATE 28 October 2021

Legend

- Subject Site
- 100m Buffer
- 26m APZ
- Woodland
- Tree



Firebird ecoSultants Pty Ltd
 ABN - 16 105 985 993
 Level 1, 146 Hunter Street, Newcastle NSW 2300
 P O Box 354 Newcastle NSW 2300



DISCLAIMER
 This document and the information shown shall remain the property of Firebird ecoSultants Pty Ltd. The document may only be used for the purpose for which it was supplied and in accordance with the terms of engagement for the commission. Unauthorised use of this document in any way is prohibited.

APPENDIX 4

ASSET PROTECTION ZONE REQUIREMENTS

In combination with other BPMS, a bush fire hazard can be reduced by implementing simple steps to reduce vegetation levels. This can be done by designing and managing landscaping to implement an APZ around the property.

Careful attention should be paid to species selection, their location relative to their flammability, minimising continuity of vegetation (horizontally and vertically), and ongoing maintenance to remove flammable fuels (leaf litter, twigs and debris).

This Appendix sets the standards which need to be met within an APZ.

A4.1 Asset Protection Zones

An APZ is a fuel-reduced area surrounding a building or structure. It is located between the building or structure and the bush fire hazard.

For a complete guide to APZs and landscaping, download the NSW RFS document *Standards for Asset Protection Zones* at the NSW RFS Website www.rfs.nsw.gov.au.

An APZ provides:

- a buffer zone between a bush fire hazard and an asset;
- an area of reduced bush fire fuel that allows for suppression of fire;
- an area from which backburning or hazard reduction can be conducted; and
- an area which allows emergency services access and provides a relatively safe area for firefighters and home owners to defend their property.

Bush fire fuels should be minimised within an APZ. This is so that the vegetation within the zone does not provide a path for the spread of fire to the building, either from the ground level or through the tree canopy.

An APZ, if designed correctly and maintained regularly, will reduce the risk of:

- direct flame contact on the building;
- damage to the building asset from intense radiant heat; and
- ember attack.

The methodology for calculating the required APZ distance is contained within Appendix 1. The width of the APZ required will depend upon the development type and bush fire threat. APZs for new development are set out within Chapters 5, 6 and 7 of this document.

In forest vegetation, the APZ can be made up of an Inner Protection Area (IPA) and an Outer Protection Area (OPA).

A4.1.1 Inner Protection Areas (IPAs)

The IPA is the area closest to the building and creates a fuel-managed area which can minimise the impact of direct flame contact and radiant heat on the development and act as a defensible space. Vegetation within the IPA should be kept to a minimum level. Litter fuels within the IPA should be kept below 1cm in height and be discontinuous.

In practical terms the IPA is typically the curtilage around the building, consisting of a mown lawn and well maintained gardens.

When establishing and maintaining an IPA the following requirements apply:

Trees

- tree canopy cover should be less than 15% at maturity;
- trees at maturity should not touch or overhang the building;
- lower limbs should be removed up to a height of 2m above the ground;
- tree canopies should be separated by 2 to 5m; and
- preference should be given to smooth barked and evergreen trees.

Shrubs

- create large discontinuities or gaps in the vegetation to slow down or break the progress of fire towards buildings should be provided;
- shrubs should not be located under trees;
- shrubs should not form more than 10% ground cover; and
- clumps of shrubs should be separated from exposed windows and doors by a distance of at least twice the height of the vegetation.

Grass

- grass should be kept mown (as a guide grass should be kept to no more than 100mm in height); and
- leaves and vegetation debris should be removed.

A4.1.2 Outer Protection Areas (OPAs)

An OPA is located between the IPA and the unmanaged vegetation. It is an area where there is maintenance of the understorey and some separation in the canopy. The reduction of fuel in this area aims to decrease the intensity of an approaching fire and restricts the potential for fire spread from crowns; reducing the level of direct flame, radiant heat and ember attack on the IPA.

Because of the nature of an OPA, they are only applicable in forest vegetation.

When establishing and maintaining an OPA the following requirements apply:

Trees

- tree canopy cover should be less than 30%; and
- canopies should be separated by 2 to 5m.

Shrubs

- shrubs should not form a continuous canopy; and
- shrubs should form no more than 20% of ground cover.

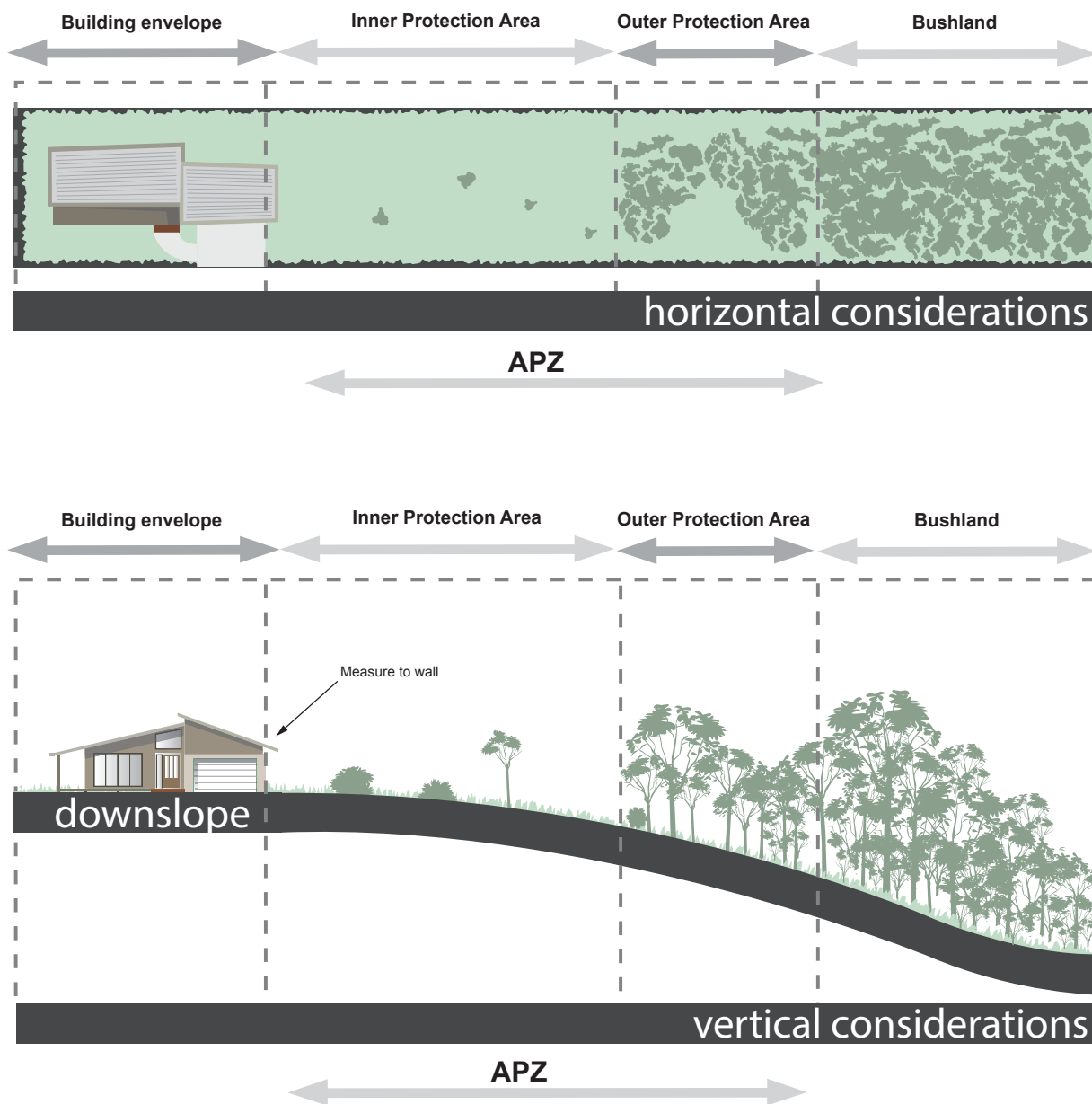
Grass

- grass should be kept mown to a height of less than 100mm; and
- leaf and other debris should be removed.

An APZ should be maintained in perpetuity to ensure ongoing protection from the impact of bush fires. Maintenance of the IPA and OPA as described above should be undertaken regularly, particularly in advance of the bush fire season.

Figure A4.1

Typical Inner and Outer Protection Areas.



APPENDIX C BUSHFIRE PRONE LAND

