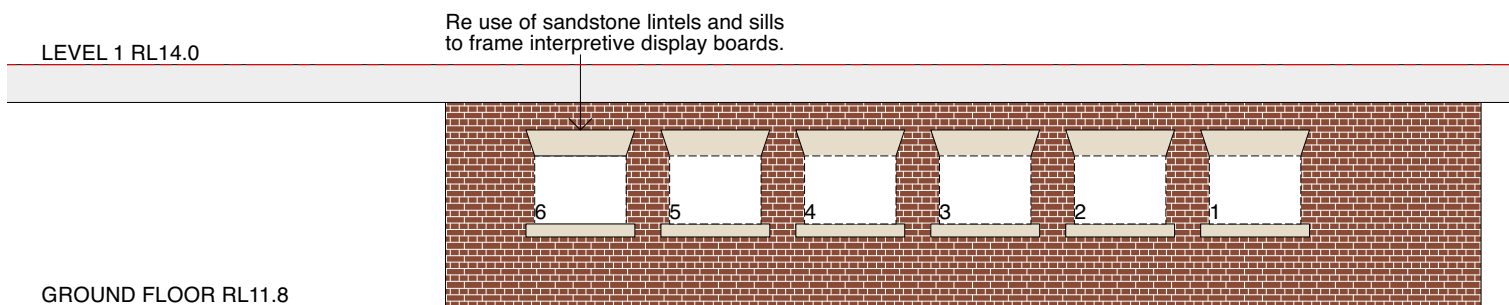




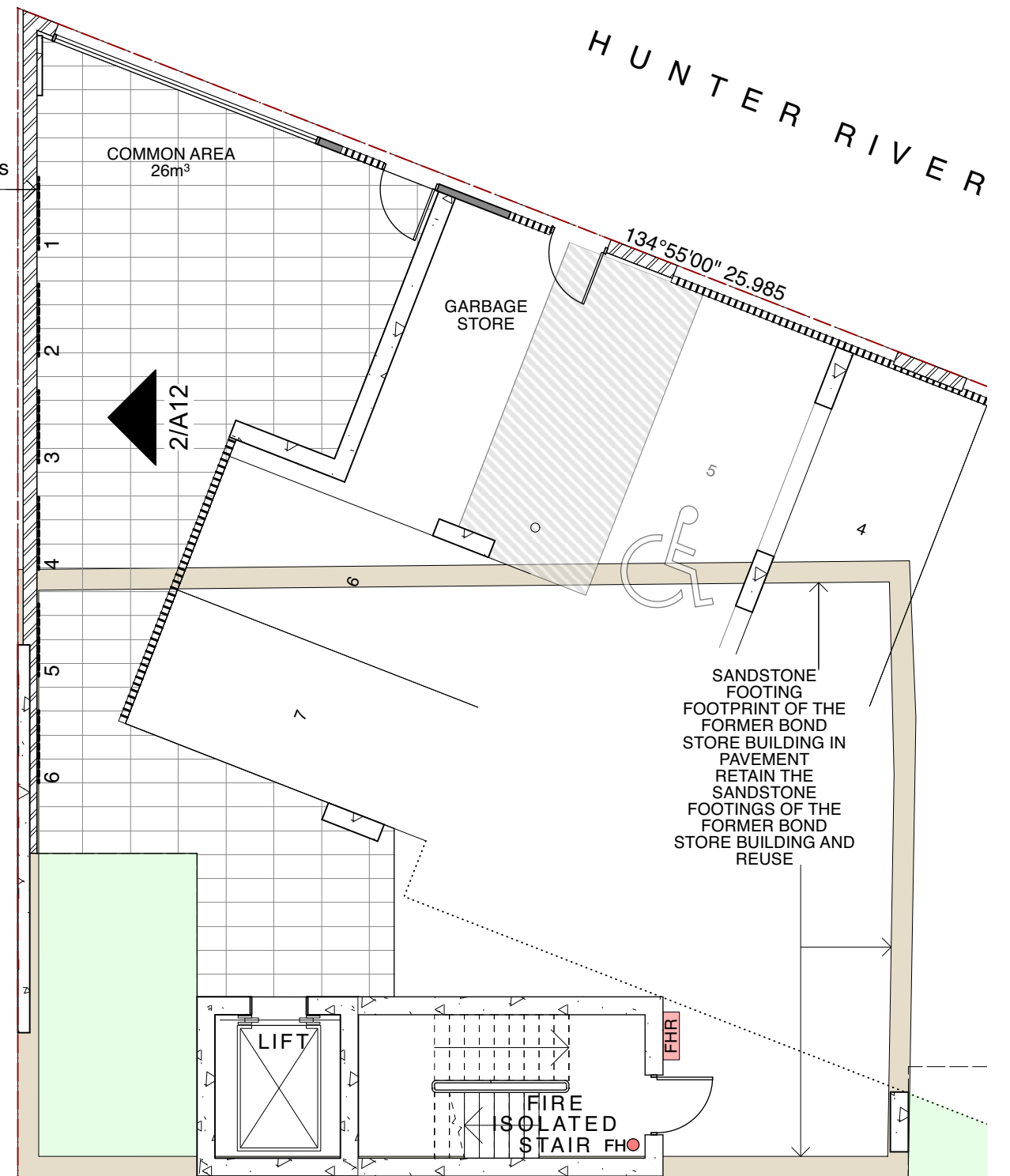
PHOTO of north facing wall of the existing Bond Store
Sandstone lintels and sills to be removed, stored and reused in the interpretive panels



INTERPRETIVE DISPLAY BOARDS OF BOND STORE

2 ELEVATION

Interpretive panels
of former Bond
Store Building



1 GROUND FLOOR PART PLAN



architects
becerra

The Grace Building
G01, 1 Layton Street
Camperdown NSW 2050
Cnr Pyrmont Bridge Road & Mallett Street
t 02 9557 2288
f 02 9557 2287
w www.archb.com.au
Registered Architect 5387
ABN 87 123 916 807

Project
416 High Street Maitland
NEW RESIDENTIAL DEVELOPMENT
Client
Glen Greedy
Title
INTERPRETIVE DISPLAY

Drawn By PB	Dwg Date: March 22	Project No. 2217
Checked By AB	Scale 1:100@A3	Drawing No. Rev A12 A