

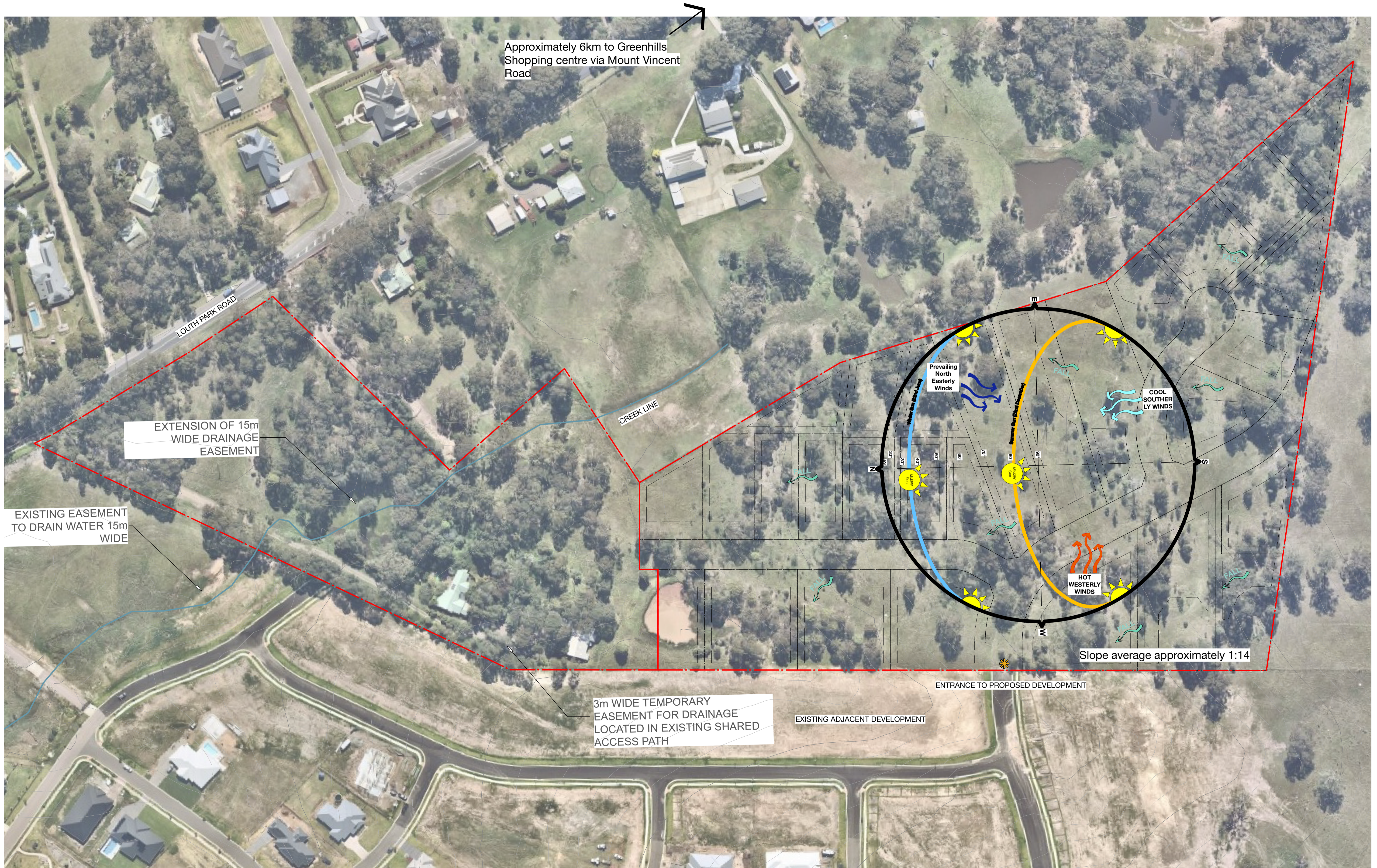
PROPOSED 29 LOT SUBDIVISION LANDSCAPE DEVELOPMENT APPLICATION DOCUMENTATION (DA) 442 LOUTH PARK ROAD, LOUTH PARK, NSW 2320.



Sheet No.	Drawing Title	Revision	Date
LP01	COVER SHEET	C	7/4/2022
LP02	SITE ANALYSIS PLAN	C	7/4/2022
LP03	SITE PLAN	C	7/4/2022
LP04	LANDSCAPE PLAN - PART A	C	7/4/2022
LP05	LANDSCAPE PLAN - PART B & THEMING PLAN	C	7/4/2022

LOCALITY PLAN Source: Nearmap, 2022
Scale 1:5000 @ A1





SITE ANALYSIS PLAN
Scale 1:1000 @ A1



Studio 1, 88 Fern Street
PO Box 111
Islington NSW 2296
Phone (02) 4965 3500
Fax (02) 4965 3555
admin@moirla.com.au
www.moirla.com.au

ARCHITECT:
ENGINEER:
GCA Engineering Solutions

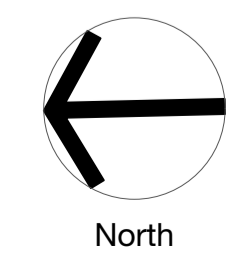
CLIENT:
NewPro 25 Pty Ltd

NOTE: DRAWING PURPOSES FOR APPROVAL ONLY. NOT FOR CONSTRUCTION.

No:	DATE:	REVISION:
A	1/2/22	FOR COORDINATION
B	9/2/2022	FOR SUBMISSION
C	7/4/2022	FOR SUBMISSION

BY: PROJECT:
CN 29 Lot Subdivision, Louth Park
CN 442 Louth Park Road, Louth Park NSW 2320
CN

Status: FOR SUBMISSION

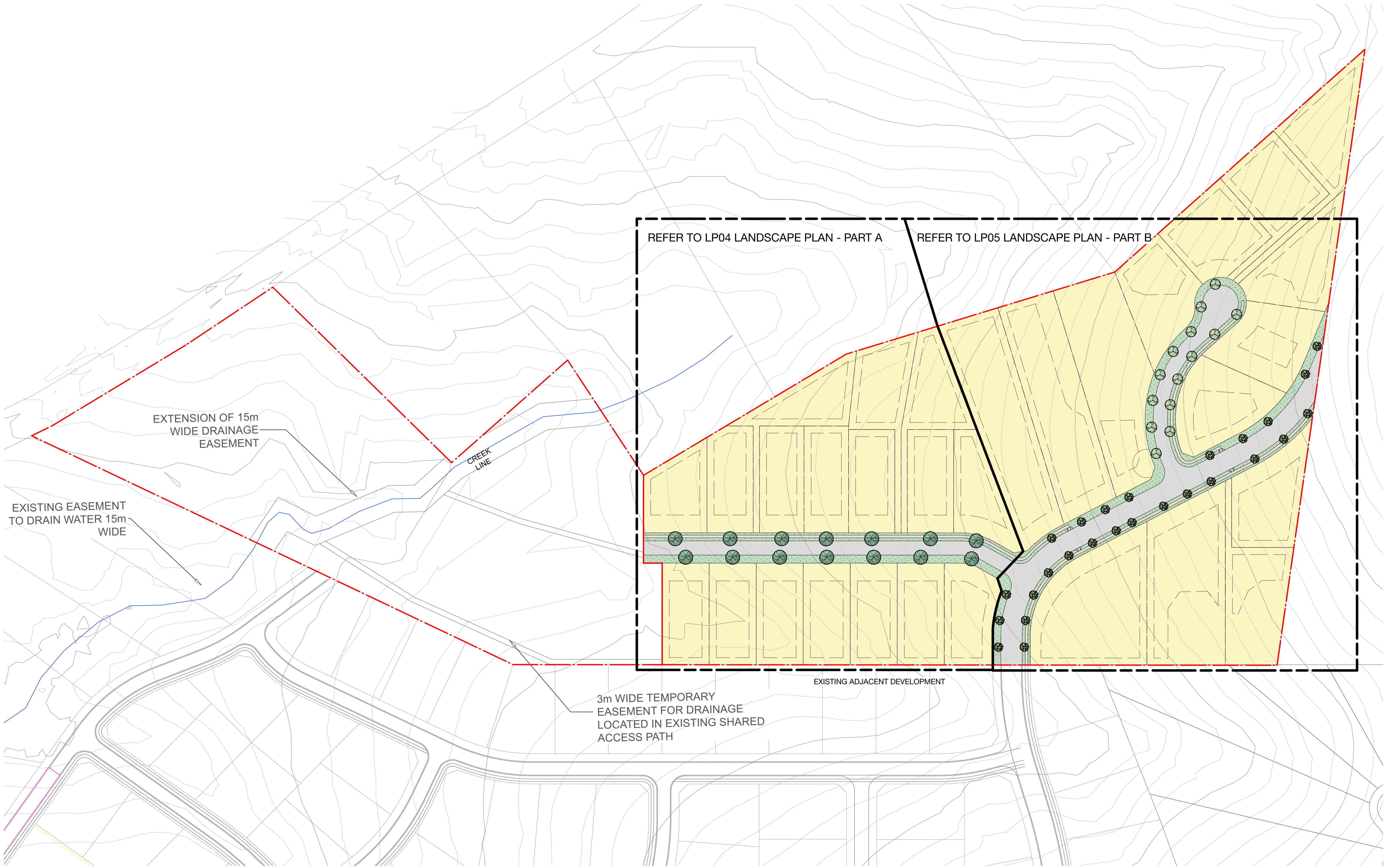


SITE ANALYSIS PLAN

SCALE: 1:1000
ORIGINAL DRAWING AT A1.
Drawn By: CN
Checked By: SR Approved By: DM

Project No.
Drawing No.
LP02

2123
Rev
C



SITE PLAN
Scale 1:1000 @ A1



Studio 1, 88 Fern Street
PO Box 111
Islington NSW 2296
Phone (02) 4965 3500
Fax (02) 4965 3555
admin@moirla.com.au
www.moirla.com.au

ARCHITECT:
ENGINEER:
GCA Engineering Solutions

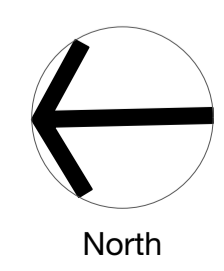
CLIENT:
NewPro 25 Pty Ltd

No:	DATE:	REVISION:
A	1/2/22	FOR COORDINATION
B	9/2/2022	FOR SUBMISSION
C	7/4/2022	FOR SUBMISSION

BY: PROJECT:
CN 29 Lot Subdivision, Louth Park
CN 442 Louth Park Road, Louth Park NSW 2320
CN

NOTE: DRAWING PURPOSES FOR APPROVAL ONLY. NOT FOR CONSTRUCTION.

Status: FOR SUBMISSION



SITE PLAN

SCALE: 1:1000

ORIGINAL DRAWING AT A1.

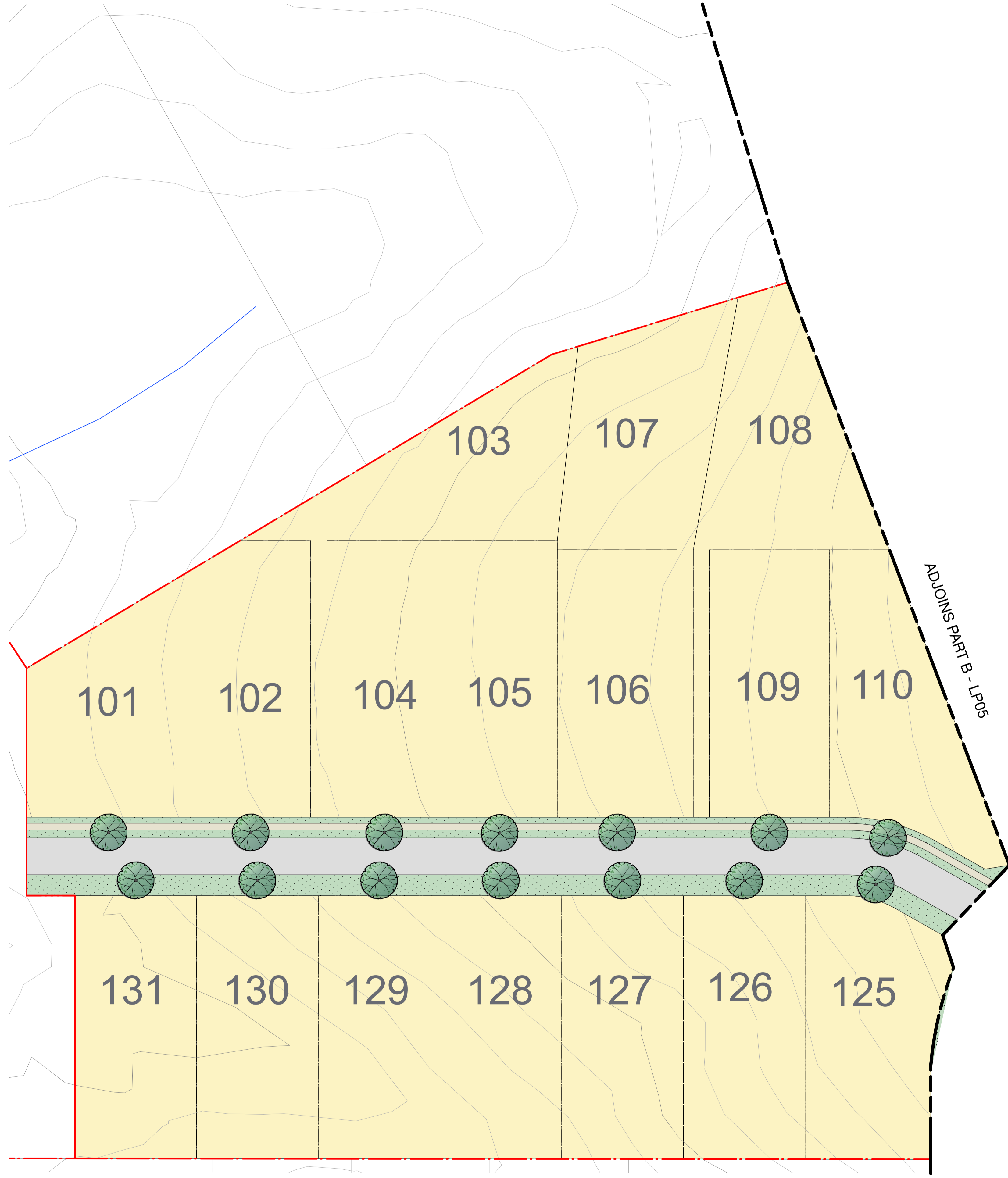
Drawn By: CN

Checked By: SR Approved By: DM

Project No. 2123

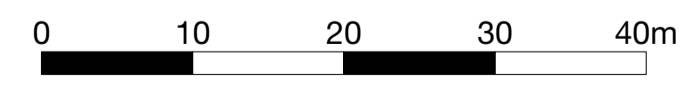
Drawing No. LP03

Rev C



- LEGEND**
- Site boundary
 - Lot boundary
 - Existing contours
 - Proposed building envelope
 - Proposed lots
 - Road
 - Concrete footpath
 - Turf
- Street Trees**
- Fraxinus angustifolia*
Claret Ash
 - Tristanopsis laurina* 'Luscious'
Water Gum
 - Waterhousea floribunda*
Weeping Lilly Pilly

LANDSCAPE PLAN - PART A
Scale 1:500 @ A1



Studio 1, 88 Fern Street
PO Box 111
Islington NSW 2296
Phone (02) 4965 3500
Fax (02) 4965 3555
admin@moirla.com.au
www.moirla.com.au

ARCHITECT:
ENGINEER:
GCA Engineering Solutions

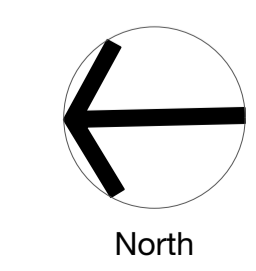
CLIENT:
NewPro 25 Pty Ltd

NOTE: DRAWING PURPOSES FOR APPROVAL ONLY. NOT FOR CONSTRUCTION.

No.	DATE	REVISION:
A	1/2/22	FOR COORDINATION
B	9/2/2022	FOR SUBMISSION
C	7/4/2022	FOR SUBMISSION

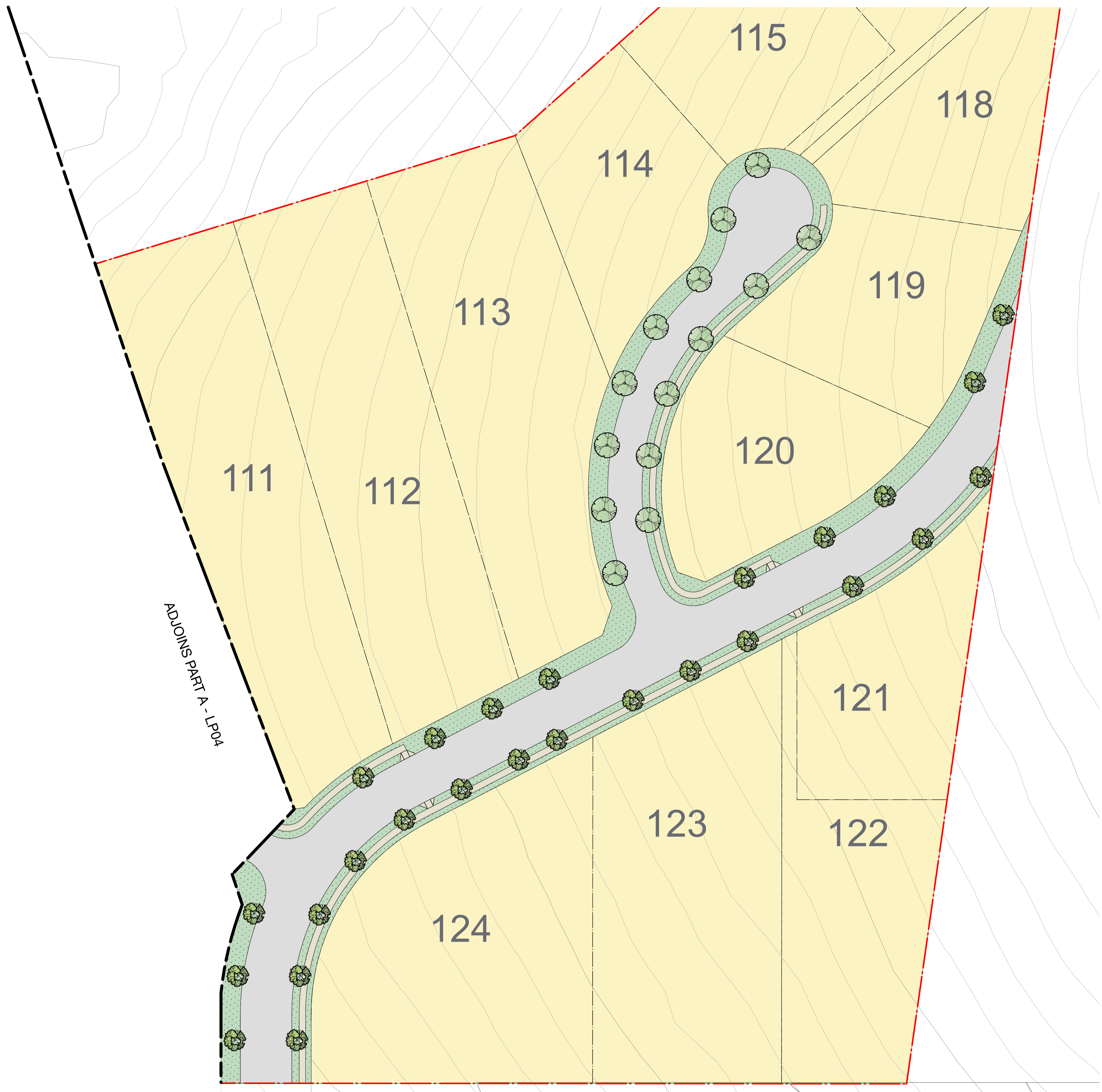
BY: CN
PROJECT: 29 Lot Subdivision, Louth Park
442 Louth Park Road, Louth Park NSW 2320

Status: FOR SUBMISSION



LANDSCAPE PLAN - PART A

SCALE: 1:500
ORIGINAL DRAWING AT A1.
Drawn By: CN
Checked By: SR
Project No. 2123
Drawing No. LP04
Rev C



TREES



Fraxinus angustifolia



Tristaniopsis laurina 'Luscious'



Waterhousea floribunda

LEGEND

- Site boundary
- Lot boundary
- Existing contours
- Proposed building envelope
- Proposed lots
- Road
- Concrete footpath
- Turf

Street Trees

- Fraxinus angustifolia*
Claret Ash
- Tristaniopsis laurina* 'Luscious'
Water Gum
- Waterhousea floribunda*
Weeping Lilly Pilly

Planting Schedule

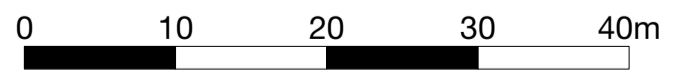
Code	Botanical Name
Trees	
FRA ang	<i>Fraxinus angustifolia</i>
TRI lus	<i>Tristaniopsis laurina</i> 'Luscious'
WAT flo	<i>Waterhousea floribunda</i>

Common Name	Pot Size	Mature Height	Mature Spread
Claret Ash	75 litre	15m	8m
Water Gum	75 litre	5 - 10m	4 - 6m
Weeping Lilly Pilly	75 litre	10 - 15m	6 - 8m

THEMING PLAN

LANDSCAPE PLAN - PART B
Scale 1:500 @ A1

ADJOINS PART EXISTING DEVELOPMENT



Studio 1, 88 Fern Street
PO Box 111
Islington NSW 2296
Phone (02) 4965 3500
Fax (02) 4965 3555
admin@moirla.com.au
www.moirla.com.au

ARCHITECT:
ENGINEER:
GCA Engineering Solutions

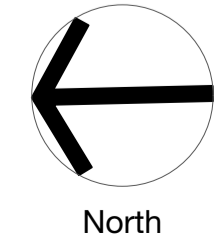
CLIENT:
NewPro 25 Pty Ltd

No: A B C
DATE: 1/2/22 9/2/2022 7/4/2022
REVISION: FOR COORDINATION FOR SUBMISSION FOR SUBMISSION

BY: CN CN CN
PROJECT:
29 Lot Subdivision, Louth Park
442 Louth Park Road, Louth Park NSW 2320

Status: FOR SUBMISSION

NOTE: DRAWING PURPOSES FOR APPROVAL ONLY. NOT FOR CONSTRUCTION.



LANDSCAPE PLAN - PART B & THEMING PLAN

SCALE: 1:500
ORIGINAL DRAWING AT A1.
Drawn By: CN
Checked By: SR
Project No. 2123
Drawing No. LP05
Rev C