

CHISHOLM CENTRE COMMERCIAL PRECINCT LANDSCAPE DEVELOPMENT APPLICATION DOCUMENTATION (DA) LOT 1 DP1224700 HERITAGE DRIVE, CHISHOLM, NSW 2322

Recently registered as LOT 11 DP1280255



LOCALITY PLAN
Scale 1:5000 @ A1

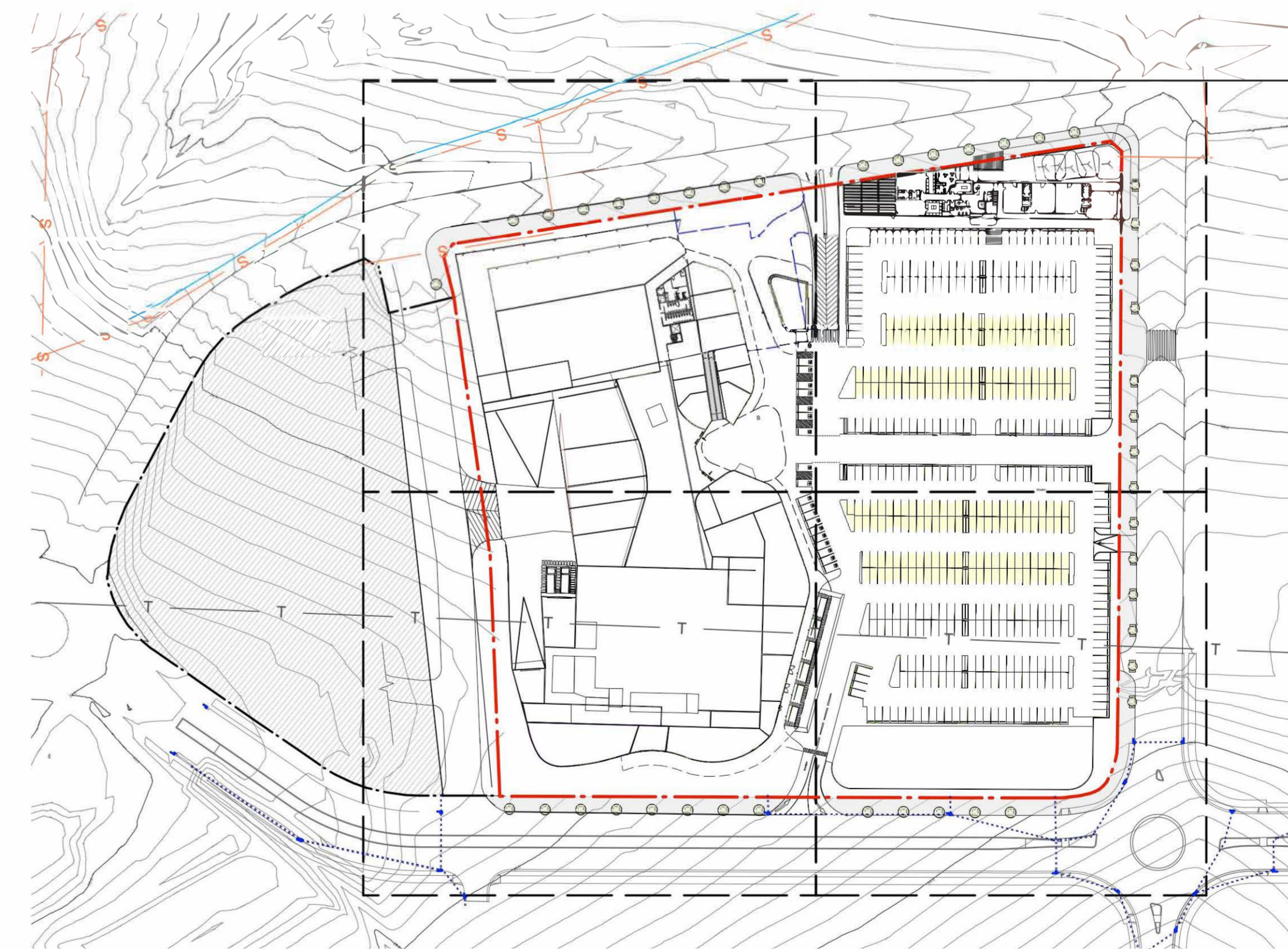
Source: Nearmap, 2021



0 100 200 300m

Sheet No.	Drawing Title
LP01	COVER SHEET
LP02	SITE ANALYSIS PLAN
LP03	KEY PLAN
LP04	LANDSCAPE PLAN 01
LP05	LANDSCAPE PLAN 02
LP06	LANDSCAPE PLAN 03
LP07	LANDSCAPE PLAN 04
LP08	PLANTING SCHEDULE
LP09	THEMING

Revision	Date
B	28/10/21
B	28/10/21
B	28/10/21
B	28/10/21
B	28/10/21
B	28/10/21
B	28/10/21
B	28/10/21
B	28/10/21



SITE PLAN
Scale 1:1500 @ A1



0 30 60 90m



Studio 1, 88 Fern Street
PO Box 111
Islington NSW 2296
Phone (02) 4965 3500
Fax (02) 4965 3555
admin@moirla.com.au
www.moirla.com.au

ARCHITECT:
BN
ENGINEER:
Triaxial

CLIENT:
Revelop

NOTE: DRAWING PURPOSES FOR APPROVAL ONLY. NOT FOR CONSTRUCTION.

No: A
DATE: 6/10/21
REVISION: 1.0 Draft DA Documentation
B 28/10/21 2.0 Draft DA Documentation

BY: AG
AG

PROJECT:
Chisholm Centre Commercial Precinct
20 Heritage Drive, Chisholm NSW 2322

Status: DRAFT

COVER SHEET

SCALE: AS SHOWN Project No. 2073
ORIGINAL DRAWING AT A1. Drawing No. LP01 Rev B
Drawn By: AG
Checked By: TB Approved By: DM



1. View across site from northern boundary at Tigerhawk Drive, with residential area seen in the distance.



2. Pedestrian crossing along Tigerhawk Drive looking towards existing mature tree on site.



3. View from site looking across to the early childcare centre, located to the north-east of the site.



4. View from Settlers Boulevard across to vacant land and Eucalypts to the east of the site.



5. Street tree and verge planting along Settlers Boulevard to the east.



6. Heritage Drive streetscape along western site boundary. Entrance to Whitewater park shown across the road.

LEGEND

- Site boundary
- Lot boundary
- Existing major contour (5m interval)
- Existing minor contour (0.5m interval)
- FALL Site cross fall
- Existing drainage
- Existing sewer lines
- Existing telstra lines
- Existing water lines
- Existing stormwater lines
- Underground power lines
- Pedestrian crossing
- Bus stop
- Existing tree
- Entry / Exit
- Wind direction
- B1 Neighbourhood Centre
- R1 Adjacent Residential
- R1 Adjacent Open Space - zoned R1
- R1 Adjacent School - zoned R1
- R2 Adjacent Recreation
- Photograph Marker Location

SITE ANALYSIS PLAN
Scale 1:1500 @ A1



Studio 1, 88 Fern Street
PO Box 111
Islington NSW 2296
Phone (02) 4965 3500
Fax (02) 4965 3555
admin@moirla.com.au
www.moirla.com.au

ARCHITECT:
BN
ENGINEER:
Triaxial

CLIENT:
Revolv

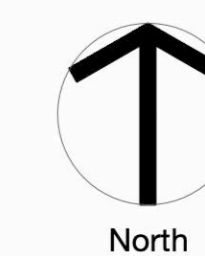
NOTE: DRAWING PURPOSES FOR APPROVAL ONLY. NOT FOR CONSTRUCTION.

No: A
DATE: 6/10/21
REVISION: 1.0 Draft DA Documentation
B 28/10/21 2.0 Draft DA Documentation

BY: AG
AG

PROJECT:
Chisholm Centre Commercial Precinct
20 Heritage Drive, Chisholm NSW 2322

Status: DRAFT



SITE ANALYSIS PLAN

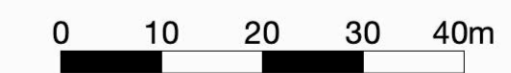
SCALE: 1:500
ORIGINAL DRAWING AT A1.
Drawn By: AG
Checked By: TB

Project No.
Drawing No.
LP02

2073
Rev
B



KEY PLAN
Scale 1:750 @ A1



Stair integrated with bleacher seating with sandstone log retaining. 23 x risers @150mm.



LEGEND

- Site boundary
 - Lot boundary
 - Existing major contour (5m interval)
 - Existing minor contour (0.5m interval)
 - Outline of basement carpark below
 - Existing street tree - to be retained & protected
 - Existing tree - to be removed
 - Existing concrete footpath
 - P1 Hot mix asphalt pavement
 - P2 Concrete pavement
 - P3 Pavement
 - P4 Pavement
 - P5 Pavement
 - RS Rubber soft fall tiles
 - T Turf
 - Sandstone log
 - Gabion retaining
 - Corten balustrade / retaining
 - Corten retaining
 - Formed concrete / concrete block wall
 - Sandstone boulders
 - Water feature
 - Bar seating
 - Floating timber seating
 - Timber bench seat with backrests
 - 1.2m vertical batten balustrade
- TREES**
- Cupaniopsis anacardioides* Tuckeroo
 - Elaeocarpus eumundi* Smoothed leaved Quandong
 - Eucalyptus sideroxyylon rosea* Red Flowering Ironbark
 - Pyrus calleryana* 'Capital' Capital Flowering Pear
 - Tristaniopsis laurina* 'Luscious' Watergum
 - Ulmus parvifolia* 'Burnley Select' Chinese Elm
- SHRUBS / GRASSES / ACCENT PLANTS**
- Anigozanthos flavidus* Kangaroo Paw
 - Correa alba* White Correa
 - Doryanthes Excelsa* Gynea Lily
 - Phormium tenax* 'Bronze Baby' Bronze Flax
 - Phormium tenax* 'Purpureum' New Zealand Flax
 - Photinia x fraseri* 'Robusta' Photinia
- MASS PLANTING**
- MP1 Mass planting Type 3 - 4/m²
- *Aspidistra elatior*
- *Liriope muscari*
- *Philodendron xanadu*
- *Senecio serpens*
- *Viola hederacea*
 - MP2 Mass Planting Type 2 - 3/m²
- *Carpobrotus glaucescens*
- *Lomandra longifolia* 'Tanika'
- *Pennisetum alopecuroides*
- *Westringia fruticosa* 'Grey Box'
- *Westringia fruticosa* 'Mundi'
 - MP3 Mass Planting Type 3 - 3/m²
- *Dianella caerulea*
- *Philodendron 'Xanadu'*
- *Trachelospermum asiaticum* 'Flat Mat'
 - MP4 Mass Planting Type 4 - 3/m²
- *Lomandra longifolia* 'Tanika'
- *Pennisetum alopecuroides*
 - MP5 Mass Planting Type 5 - Basin 4/m²
- *Carex appresa*
- *Ficinia nodosa*
- *Gahnia clarkei*
- *Juncus ustitatus*
- *Lomandra longifolia* 'Tanika'

LANDSCAPE PLAN 01
Scale 1:300 @ A1



Studio 1, 88 Fern Street
PO Box 111
Islington NSW 2296
Phone (02) 4965 3500
Fax (02) 4965 3555
admin@moirla.com.au
www.moirla.com.au

ARCHITECT:
BN
ENGINEER:
Triaxial

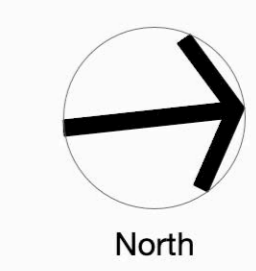
CLIENT:
Revolv

No: A DATE: 6/10/21 REVISION: 1.0 Draft DA Documentation
B DATE: 28/10/21 REVISION: 2.0 Draft DA Documentation

BY: AG PROJECT:
AG PROJECT:
Chisholm Centre Commercial Precinct
20 Heritage Drive, Chisholm NSW 2322

Status: DRAFT

NOTE: DRAWING PURPOSES FOR APPROVAL ONLY. NOT FOR CONSTRUCTION.



LANDSCAPE PLAN 01
SCALE: 1:300 Project No. 2073
ORIGINAL DRAWING AT A1. Drawing No. LP04
Checked By: TB Approved By: DM



LEGEND

- Site boundary
- Lot boundary
- Existing major contour (5m interval)
- Existing minor contour (0.5m interval)
- Outline of basement carpark below
- Existing street tree - to be retained & protected
- Existing tree - to be removed
- Existing concrete footpath
- P1 Hot mix asphalt pavement
- P2 Concrete pavement
- P3 Pavement
- P4 Pavement
- P5 Pavement
- RS Rubber soft fall tiles
- T Turf
- Sandstone log
- Gabion retaining
- Corten balustrade / retaining
- Corten retaining
- Formed concrete / concrete block wall
- Sandstone boulders
- Water feature
- Bar seating
- Floating timber seating
- Timber bench seat with backrests
- F1 1.2m vertical batten balustrade

TREES

- Cupaniopsis anacardioides* Tuckeroo
- Elaeocarpus eumundi* Smoothed leaved Quandong
- Eucalyptus sideroxylon rosea* Red Flowering Ironbark
- Pyrus calleryana 'Capital'* Capital Flowering Pear
- Tristanopsis laurina 'Luscious'* Watergum
- Ulmus parvifolia 'Burnley Select'* Chinese Elm

SHRUBS / GRASSES / ACCENT PLANTS

- Anigozanthos flavidus* Kangaroo Paw
- Correa alba* White Correa
- Doryanthes Excelsa* Gynea Lily
- Phormium tenax 'Bronze Baby'* Bronze Flax
- Phormium tenax 'Purpureum'* New Zealand Flax
- Photinia x fraseri 'Robusta'* Photinia

MASS PLANTING

- MP1 Mass planting Type 3 - 4/m²
 - Aspidistra elatior*
 - Liriope muscari*
 - Philodendron xanadu*
 - Senecio serpens*
 - Viola hederacea*
- MP2 Mass Planting Type 2 - 3/m²
 - Carpobrotus glaucescens*
 - Lomandra longifolia 'Tanika'*
 - Pennisetum alopecuroides*
 - Westringia fruticosa 'Grey Box'*
 - Westringia fruticosa 'Mundi'*
- MP3 Mass Planting Type 3 - 3/m²
 - Dianella caerulea*
 - Philodendron 'Xanadu'*
 - Trachelospermum asiaticum 'Flat Mat'*
- MP4 Mass Planting Type 4 - 3/m²
 - Lomandra longifolia 'Tanika'*
 - Pennisetum alopecuroides*
- MP5 Mass Planting Type 5 - Basin 4/m²
 - Carex apresa*
 - Ficinia nodosa*
 - Gahnia clarkei*
 - Juncus ustitatus*
 - Lomandra longifolia 'Tanika'*

LANDSCAPE PLAN 02
Scale 1:300 @ A1



Studio 1, 88 Fern Street
PO Box 111
Islington NSW 2296
Phone (02) 4965 3500
Fax (02) 4965 3555
admin@moirla.com.au
www.moirla.com.au

ARCHITECT:
BN
ENGINEER:
Triaxial

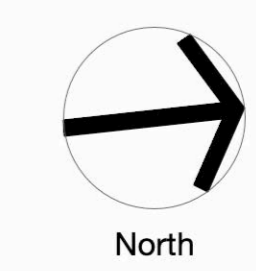
CLIENT:
Revolv

No: A DATE: 6/10/21 REVISION: 1.0 Draft DA Documentation
B DATE: 28/10/21 REVISION: 2.0 Draft DA Documentation

BY: AG PROJECT:
AG PROJECT:
Chisholm Centre Commercial Precinct
20 Heritage Drive, Chisholm NSW 2322

Status: DRAFT

NOTE: DRAWING PURPOSES FOR APPROVAL ONLY. NOT FOR CONSTRUCTION.



LANDSCAPE PLAN 02

SCALE: 1:300 Project No. 2073
ORIGINAL DRAWING AT A1. Drawing No. LP05
Checked By: TB Approved By: DM

LEGEND

- Site boundary
- Lot boundary
- Existing major contour (5m interval)
- Existing minor contour (0.5m interval)
- Outline of basement carpark below
- Existing street tree - to be retained & protected
- Existing tree - to be removed
- Existing concrete footpath
- P1 Hot mix asphalt pavement
- P2 Concrete pavement
- P3 Pavement
- P4 Pavement
- P5 Pavement
- RS Rubber soft fall tiles
- T Turf
- Sandstone log
- Gabion retaining
- Corten balustrade / retaining
- Corten retaining
- Formed concrete / concrete block wall
- Sandstone boulders
- Water feature
- Bar seating
- Floating timber seating
- Timber bench seat with backrests
- F1 1.2m vertical batten balustrade

TREES

- Cupaniopsis anacardioides* Tuckeroo
- Elaeocarpus eumundi* Smoothed leaved Quandong
- Eucalyptus sideroxylon rosea* Red Flowering Ironbark
- Pyrus calleryana 'Capital'* Capital Flowering Pear
- Tristania laurina 'Luscious'* Watergum
- Ulmus parvifolia 'Burnley Select'* Chinese Elm

SHRUBS / GRASSES / ACCENT PLANTS

- Anigozanthos flavidus* Kangaroo Paw
- Correa alba* White Correa
- Doryanthes Excelsa* Gynea Lily
- Phormium tenax 'Bronze Baby'* Bronze Flax
- Phormium tenax 'Purpureum'* New Zealand Flax
- Photinia x fraseri 'Robusta'* Photinia

MASS PLANTING

- MP1 Mass planting Type 3 - 4/m²
 - Aspidistra elatior*
 - Liriope muscari*
 - Philodendron xanadu*
 - Senecio serpens*
 - Viola hederacea*
- MP2 Mass Planting Type 2 - 3/m²
 - Carpobrotus glaucescens*
 - Lomandra longifolia 'Tanika'*
 - Pennisetum alopecuroides*
 - Westringia fruticosa 'Grey Box'*
 - Westringia fruticosa 'Mundi'*
- MP3 Mass Planting Type 3 - 3/m²
 - Dianella caerulea*
 - Philodendron 'Xanadu'*
 - Trachelospermum asiaticum 'Flat Mat'*
- MP4 Mass Planting Type 4 - 3/m²
 - Lomandra longifolia 'Tanika'*
 - Pennisetum alopecuroides*
- MP5 Mass Planting Type 5 - Basin 4/m²
 - Carex apresra*
 - Ficinia nodosa*
 - Gahnia clarkei*
 - Juncus ustitatus*
 - Lomandra longifolia 'Tanika'*



LANDSCAPE PLAN 03
Scale 1:300 @ A1



Studio 1, 88 Fern Street
PO Box 111
Islington NSW 2296
Phone (02) 4965 3500
Fax (02) 4965 3555
admin@moirla.com.au
www.moirla.com.au

ARCHITECT:
BN
ENGINEER:
Triaxial

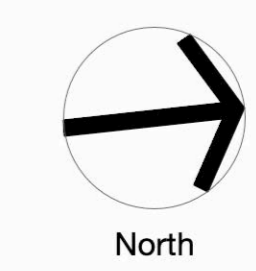
CLIENT:
Revolv

No: A DATE: 6/10/21 REVISION: 1.0 Draft DA Documentation
B DATE: 28/10/21 REVISION: 2.0 Draft DA Documentation

BY: AG PROJECT:
AG PROJECT:
Chisholm Centre Commercial Precinct
20 Heritage Drive, Chisholm NSW 2322

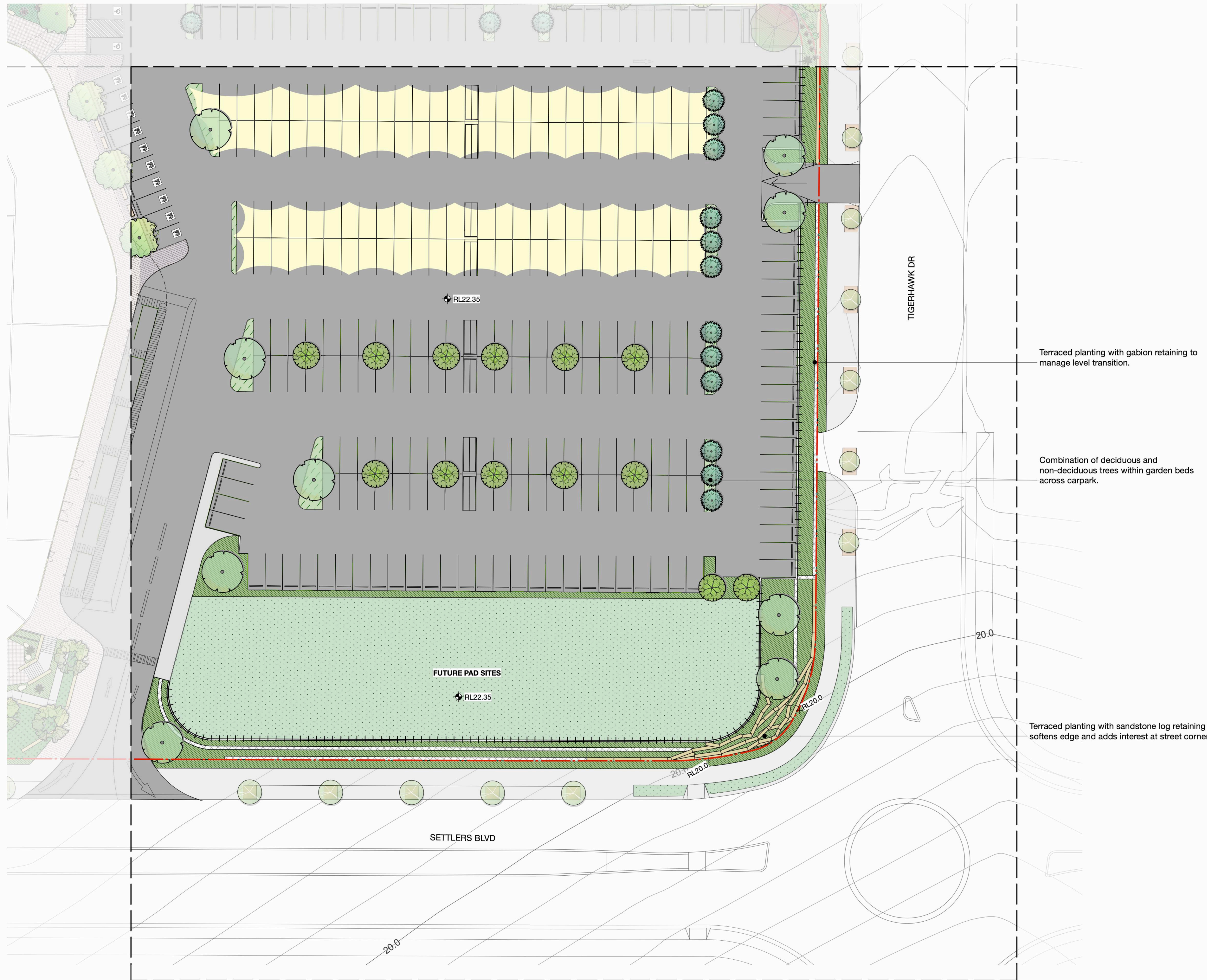
Status: DRAFT

NOTE: DRAWING PURPOSES FOR APPROVAL ONLY. NOT FOR CONSTRUCTION.



LANDSCAPE PLAN 03

SCALE: 1:300 Project No. 2073
ORIGINAL DRAWING AT A1. Drawing No. LP06 Rev B
Checked By: TB Approved By: DM



LEGEND	
	Site boundary
	Lot boundary
	Existing major contour (5m interval)
	Existing minor contour (0.5m interval)
	Outline of basement carpark below
	Existing street tree - to be retained & protected
	Existing tree - to be removed
	Existing concrete footpath
	Hot mix asphalt pavement
	Concrete pavement
	Pavement
	Pavement
	Pavement
	Rubber soft fall tiles
	Turf
	Sandstone log
	Gabion retaining
	Corten balustrade / retaining
	Corten retaining
	Formed concrete / concrete block wall
	Sandstone boulders
	Water feature
	Bar seating
	Floating timber seating
	Timber bench seat with backrests
	1.2m vertical batten balustrade
TREES	
	<i>Cupaniopsis anacardioides</i> Tuckeroo
	<i>Elaeocarpus eumundi</i> Smoothed leaved Quandong
	<i>Eucalyptus sideroxylon rosea</i> Red Flowering Ironbark
	<i>Pyrus calleryana 'Capital'</i> Capital Flowering Pear
	<i>Tristanopsis laurina 'Luscious'</i> Watergum
	<i>Ulmus parvifolia 'Burnley Select'</i> Chinese Elm
SHRUBS / GRASSES / ACCENT PLANTS	
	<i>Anigozanthos flavidus</i> Kangaroo Paw
	<i>Correa alba</i> White Correa
	<i>Doryanthes Excelsa</i> Gynea Lily
	<i>Phormium tenax 'Bronze Baby'</i> Bronze Flax
	<i>Phormium tenax 'Purpureum'</i> New Zealand Flax
	<i>Photinia x fraseri 'Robusta'</i> Photinia
MASS PLANTING	
	Mass planting Type 3 - 4/m ² - <i>Aspidistra elatior</i> - <i>Liriope muscari</i> - <i>Philodendron xanadu</i> - <i>Senecio serpens</i> - <i>Viola hederacea</i>
	Mass Planting Type 2 - 3/m ² - <i>Carpobrotus glaucescens</i> - <i>Lomandra longifolia 'Tanika'</i> - <i>Pennisetum alopecuroides</i> - <i>Westringia fruticosa 'Grey Box'</i> - <i>Westringia fruticosa 'Mundi'</i>
	Mass Planting Type 3 - 3/m ² - <i>Dianella caerulea</i> - <i>Philodendron 'Xanadu'</i> - <i>Trachelospermum asiaticum 'Flat Mat'</i>
	Mass Planting Type 4 - 3/m ² - <i>Lomandra longifolia 'Tanika'</i> - <i>Pennisetum alopecuroides</i>
	Mass Planting Type 5 - Basin 4/m ² - <i>Carex apressa</i> - <i>Ficinia nodosa</i> - <i>Gahnia clarkei</i> - <i>Juncus ustitatus</i> - <i>Lomandra longifolia 'Tanika'</i>

LANDSCAPE PLAN 04
Scale 1:300 @ A1



Studio 1, 88 Fern Street
PO Box 111
Islington NSW 2296
Phone (02) 4965 3500
Fax (02) 4965 3555
admin@moirla.com.au
www.moirla.com.au

ARCHITECT:
BN
ENGINEER:
Triaxial

CLIENT:
Revelop

No: A 6/10/21
DATE: 6/10/21
REVISION: 1.0 Draft DA Documentation
B 28/10/21 2.0 Draft DA Documentation

BY: AG
PROJECT: Chisholm Centre Commercial Precinct
20 Heritage Drive, Chisholm NSW 2322

Status: DRAFT

NOTE: DRAWING PURPOSES FOR APPROVAL ONLY. NOT FOR CONSTRUCTION.



LANDSCAPE PLAN 04

SCALE: 1:300
ORIGINAL DRAWING AT A1.
Checked By: TB

Project No. 2073
Drawing No. LP07
Rev B

TREES



Cupaniopsis anacardioides
Tuckeroo



Elaeocarpus eumundi
Smooth leaved Quandong



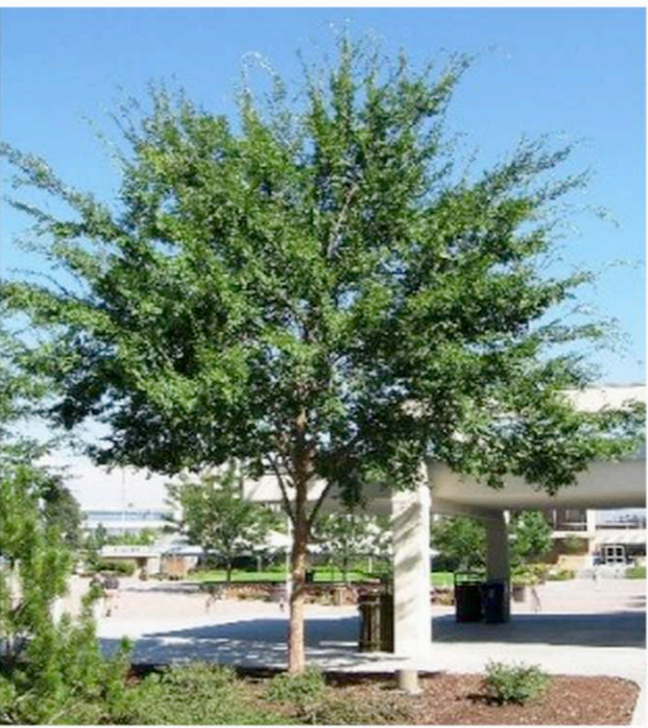
Eucalyptus sideroxylon 'Rosea'
Red Flowering Ironbark



Pyrus calleryana 'Capital'
Ornamental Pear



Tristaniopsis laurina 'Luscious'
Water Gum



Ulmus parvifolia
Chinese Elm

SHRUBS



Aspidistra elatior
Cast Iron Plant



Correa alba
White Correa



Philodendron 'Xanadu'
Xanadu



Photinia x fraseri 'Robusta'
Photinia Robusta



Westringia fruticosa 'Grey Box'
Grey Box Coastal Rosemary



Lomandra longifolia 'Tanika'
Spiny-head Mat-rush



Pennisetum alopecuroides
Chines Fountain Grass

GRASSES

ACCENT PLANTS



Anigozanthos flavidus 'Big Red'
Red Kangaroo Paw



Blechnum gibbum 'Silver Lady'
Silver Lady Fern



Doryanthes excelsa
Gymea Lily



Phormium tenax 'Bronze Baby'
Bronze New Zealand Flax



Phormium tenax 'Purpureum'
New Zealand Flax

GROUND COVERS



Carpobrotus glaucescens
Pigface



Dianella caerulea
Flax Lily



Liriope muscari
Lily Turf



Senecio serpens
Blue Chalksticks



Westringia fruticosa 'Mundi'
Mundi Coastal Rosemary



Viola hederacea
Native Violet

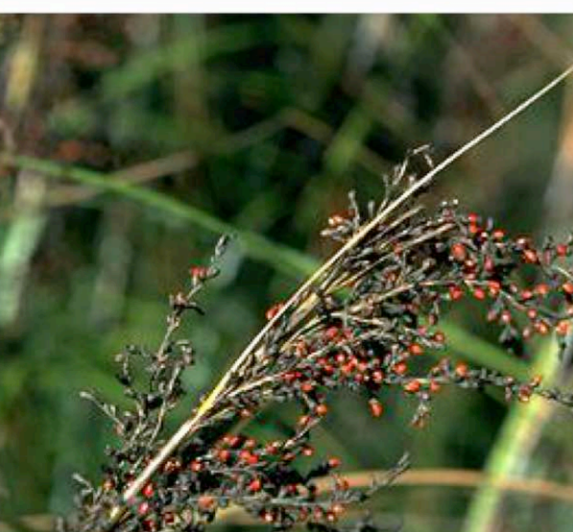
BASIN PLANTING



Carex appressa
Mat Rush



Ficinia nodosa
Knobby Club Rush



Gahnia clarkei
Saw Sedge



Juncus usitatus
Common Rush



Lomandra longifolia 'Tanika'
Spiny-head Mat Rush

PLANTING SCHEDULE

Code	Botanical Name	Common Name	Mature Height	Mature Spread	Pot Size	Qty
Trees						
CUP ana	<i>Cupaniopsis anacardioides</i>	Tuckeroo	10 - 15m	4 - 6m	25 litre	23
ELA eum	<i>Elaeocarpus eumundi</i>	Smoothed leaved Quandong	6 - 10m	3 - 5m	25 litre	42
EUC sid	<i>Eucalyptus sideroxylon</i> 'Rosea'	Red Flowering Iron Bark	15 - 20m	6 - 10m	25 litre	9
PYR cap	<i>Pyrus calleryana</i> 'Capital'	Capital Flowering Pear	8 - 12m	2 - 3m	25 litre	34
TRI lus	<i>Tristaniopsis laurina</i> 'Luscious'	Water Gum	5 - 10m	4 - 6m	25 litre	8
ULM bur	<i>Ulmus parvifolia</i> 'Burnley Select'	Chinese Elm	8 - 10m	5 - 7m	75 litre	11
Shrubs						
ASP ela	<i>Aspidistra elatior</i>	Cast Iron Plant	0.9 - 1.5m	0.9 - 1.2m	200mm	
COR alb	<i>Correa alba</i>	White Correa	0.9 - 1.5m	0.9 - 1.2m	200mm	
PHI Xan	<i>Philodendron</i> 'Xanadu'	Xanadu	0.5 - 0.8m	0.6 - 0.8m	200mm	
PHO fra	<i>Photinia x fraseri</i> 'Robusta'	Photinia	3m	2m	200mm	
WES gre	<i>Westringia</i> 'Grey Box'	Grey Box Westringia	0.3 - 0.4m	0.3 - 0.4m	100mm	
WES fru	<i>Westringia fruticosa</i>	Coastal Rosemary	0.9 - 1.5m	0.9 - 1.2m	140mm	
Grasses						
PEN alo	<i>Pennisetum alopecuroides</i> 'Nafray'	Fountain Grass	0.9 - 1.5m	0.6 - 0.9m	200mm	
LOM tan	<i>Lomandra longifolia</i> 'Tanika'	Spiny-headed mat rush	0.45 - 0.6m	0.6 - 0.9m	200mm	
DIA cae	<i>Dianella caerulea</i>	Blue Flax Lily	0.45 - 0.6m	0.3 - 0.6m	100mm	
Accent Plants						
PHO bro	<i>Phormium tenax</i> 'Bronze Baby'	Bronze Flax	0.5 - 0.7m	0.5 - 0.7m	200mm	
PHO ten p	<i>Phormium tenax</i> 'Purpureum'	New Zealand Flax	1.8m	1.8m	200mm	
DOR exc	<i>Doryanthes excelsa</i>	Gymea Lily	1.5 - 3m	1.2 - 2.0m	200mm	
ANI fla	<i>Anigozanthos flavidus</i>	Evergreen Kangaroo Paw	0.7 - 0.9m	1.0 - 1.5m	200mm	
BLE gib	<i>Blechnum gibbum</i> 'Silver Lady'	Silver Lady Fern	1 - 1.2m	1 - 1.2m	200mm	
Ground Covers						
CAR gla	<i>Carpobrotus glaucescens</i>	Pigface	0.0 - 0.3m	1.2 - 2.0m	200mm	
DIA jes	<i>Dianella caerulea</i> 'Little Jess'	Blue Flax-lily	0.45 - 0.6m	0.3 - 0.6m	200mm	
LIR mus	<i>Liriope muscari</i>	Evergreen Lilyturf	0.45 - 0.6m	0.3 - 0.6m	200mm	
SEN ser	<i>Senecio serpens</i>	Blue Chalk Sticks	0.1 - 0.2m	0.6 - 1.0m	200mm	
VIO hed	<i>Viola hederacea</i>	Native Violet	0.1 - 0.3m	1.2 - 2.0m	200mm	
WES mun	<i>Westringia fruticosa</i> 'Mundi'	Mundi Coastal Rosemary	0.4 - 0.5m	0.5 - 1.0m	200mm	
Basin Planting						
CAR app	<i>Carex appressa</i>	Tall Sedge	0.9 - 1.5m	0.3 - 0.6m	100mm	
FIC nod	<i>Ficinia nodosa</i>	Knobby Club-rush	0.75 - 0.9m	0.0 - 0.3m	100mm	
GAH cla	<i>Gahnia clarkei</i>	Saw Sedge	1.5 - 3m	0.9 - 1.2m	100mm	
JUN usi	<i>Juncus usitatus</i>	Common Rush	0.9 - 1.5m	0.6 - 0.9m	100mm	

Note, the following conditions should be ensured at installation and maintenance of planting:

- tree canopy cover should be less than 15% at maturity;
- trees at maturity should not touch or overhang the building;
- lower limbs should be removed up to a height of 2m above the ground;
- tree canopies should be separated by 2 to 5m;
- large discontinuities or gaps in vegetation should be provided to slow down or break the progress of fire towards buildings;
- shrubs should not be located under trees;
- shrubs should not form more than 10% ground cover; and
- clumps of shrubs should be separated from exposed windows and doors by a distance of at least twice the height of the vegetation; and
- grass should be kept mown (as a guide grass should be kept to no more than 100mm in height).



Studio 1, 88 Fern Street
PO Box 111
Islington NSW 2296
Phone (02) 4965 3500
Fax (02) 4965 3555
admin@moirla.com.au
www.moirla.com.au

ARCHITECT:
BN
ENGINEER:
Triaxial

CLIENT:
Revolv

No: 6/10/21
A: 6/10/21
B: 28/10/21

DATE: 6/10/21
REVISION: 1.0 Draft DA Documentation
2.0 Draft DA Documentation

BY: AG
AG

PROJECT:
Chisholm Centre Commercial Precinct
20 Heritage Drive, Chisholm NSW 2322

Status: DRAFT

PLANTING SCHEDULE

SCALE: NTS
Project No. 2073
ORIGINAL DRAWING AT A1.
Drawing No. LP08
Checked By: TB
Approved By: DM
Rev B

NOTE: DRAWING PURPOSES FOR APPROVAL ONLY. NOT FOR CONSTRUCTION.

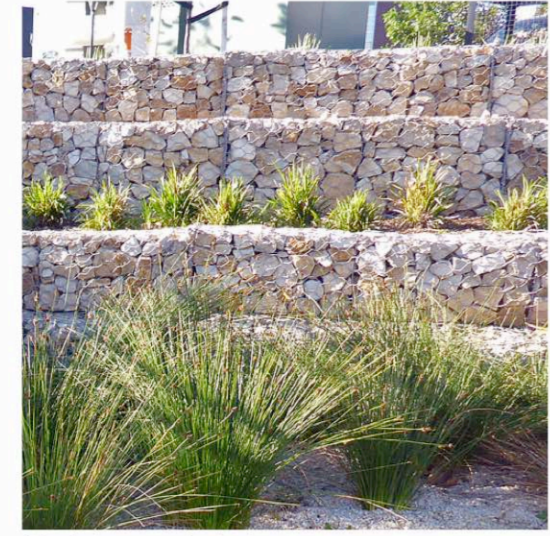
EDGE TREATMENTS



Sandstone boulders



Sandstone log retaining



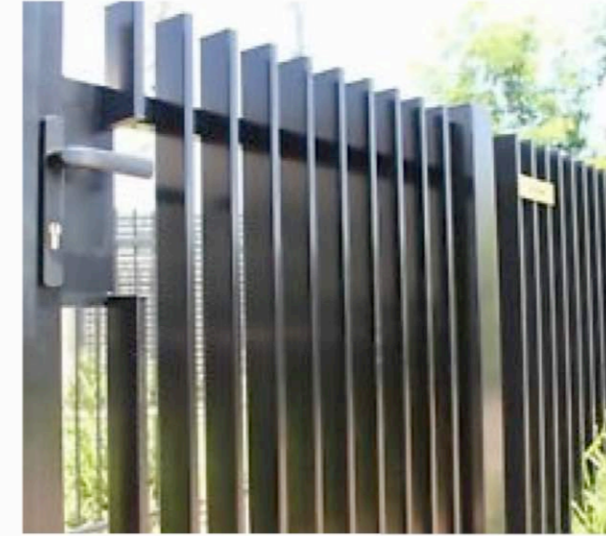
Gabion retaining



Corten balustrade



Corten garden retaining



Vertical blade fencing

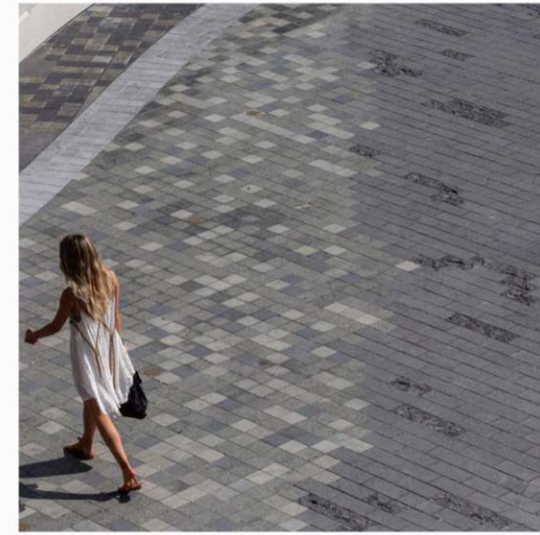
SURFACE TREATMENTS



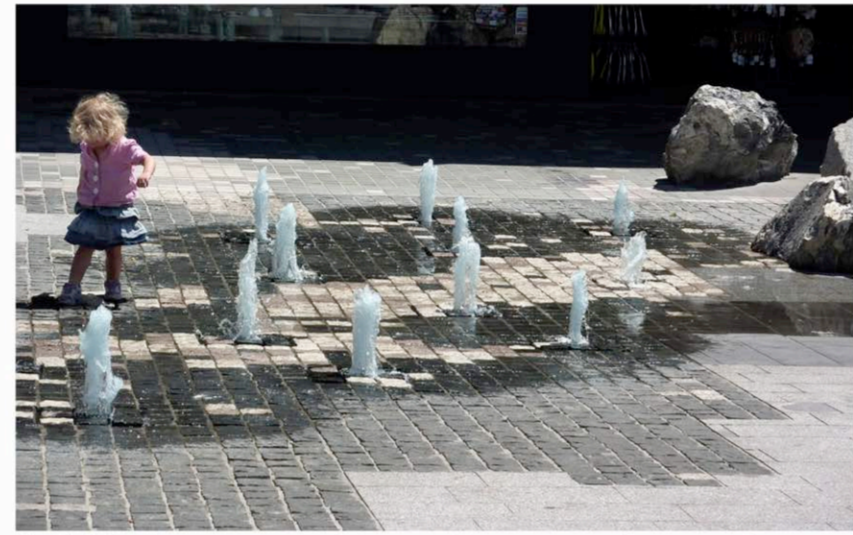
Concrete pavement



Hot mix asphalt pavement



Feathered paving treatment



Cobble feature paving and in-ground water feature



Cobble feature paving



Rocky areas within bioretention basin

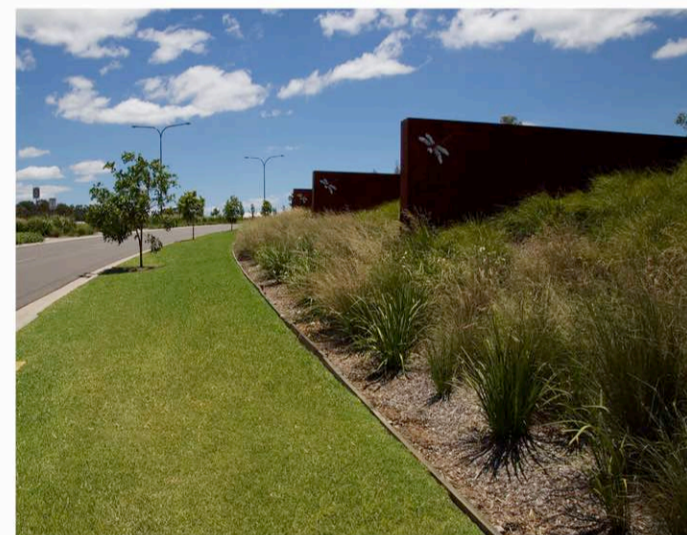


Concrete steppers within garden



Rubber tile beneath play structure

SIGNAGE



Corten signage element within garden



Corten facade treatment

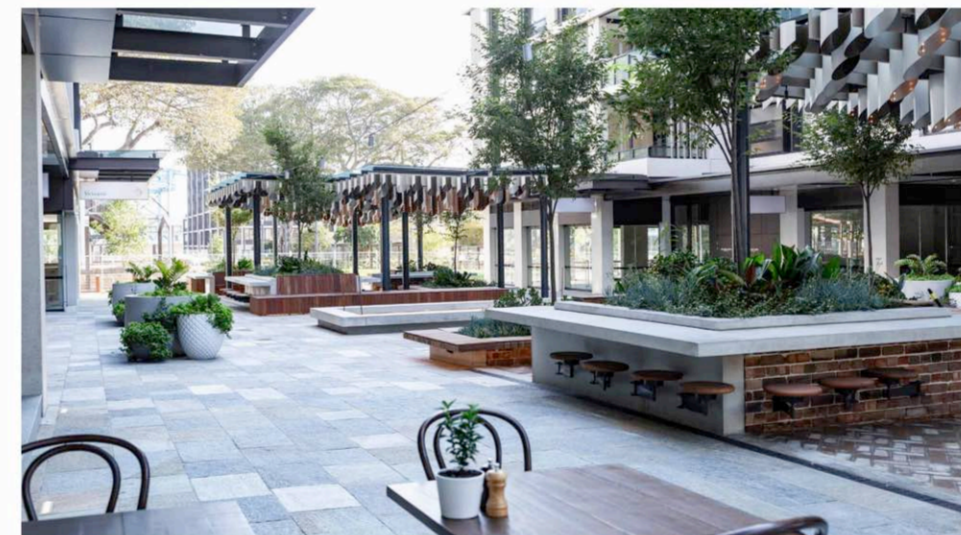
FURNITURE



Corten retaining with mounded planting and floating timber seat



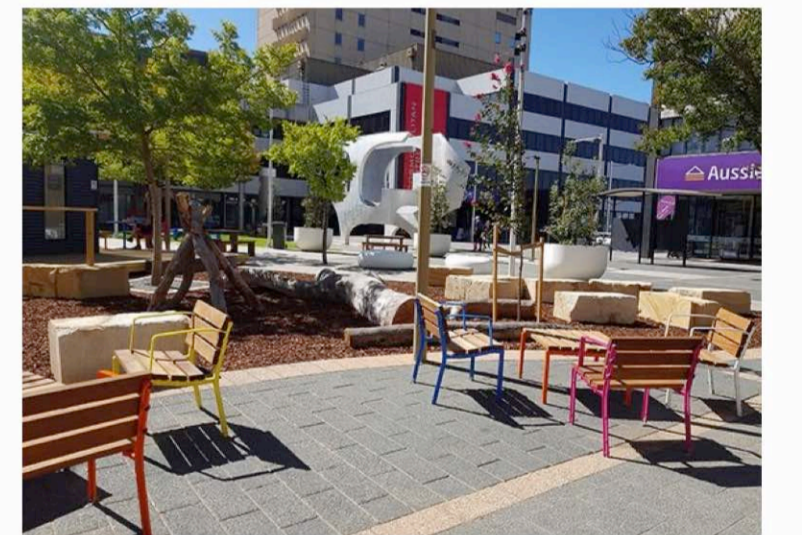
Stainless steel and timber bench seat



Kiosk bar seating with raised planters



Integrated stair and bleacher seating



Moveable furniture

PLAY STRUCTURE



Balancing / climbing flexible play structure