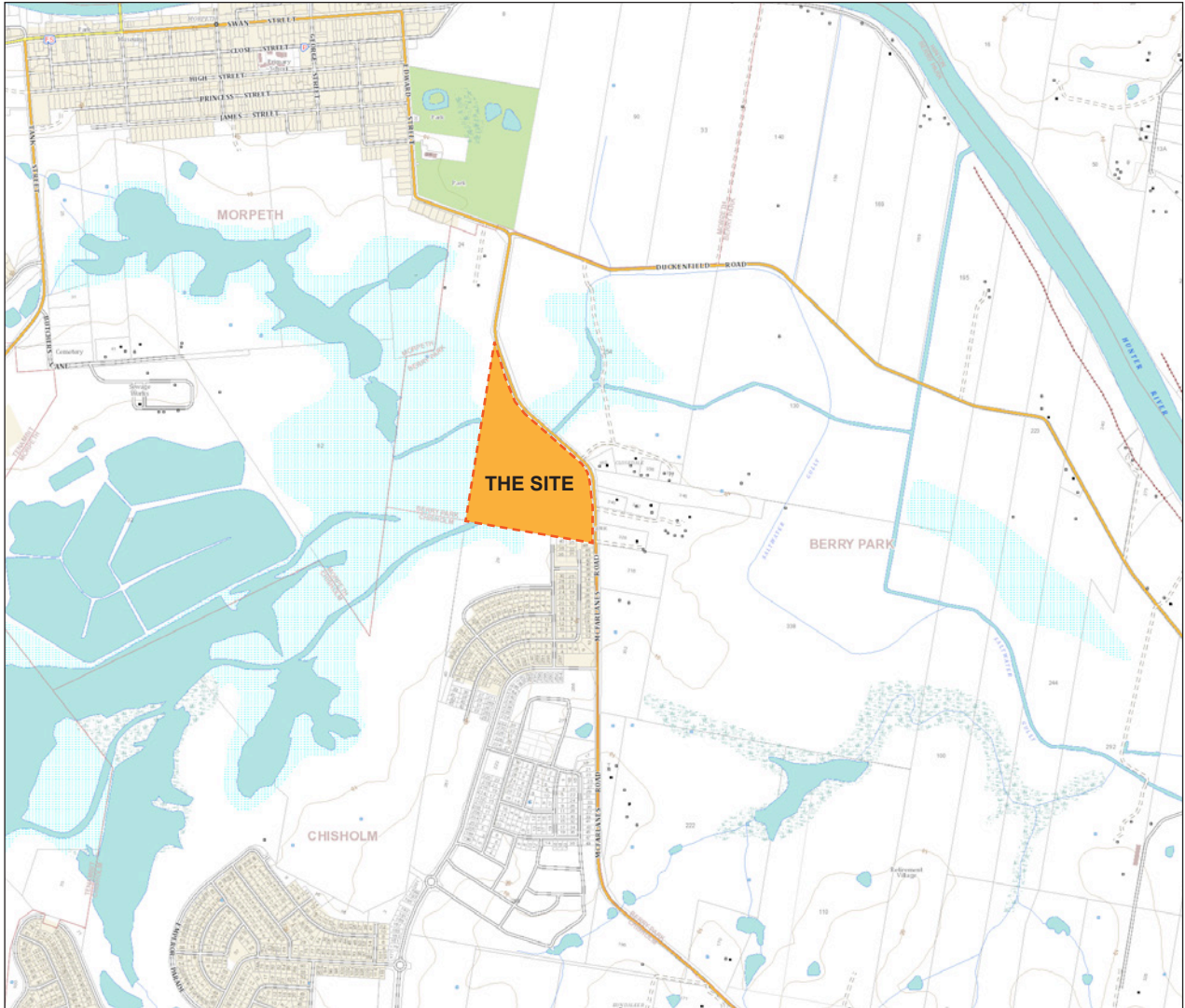


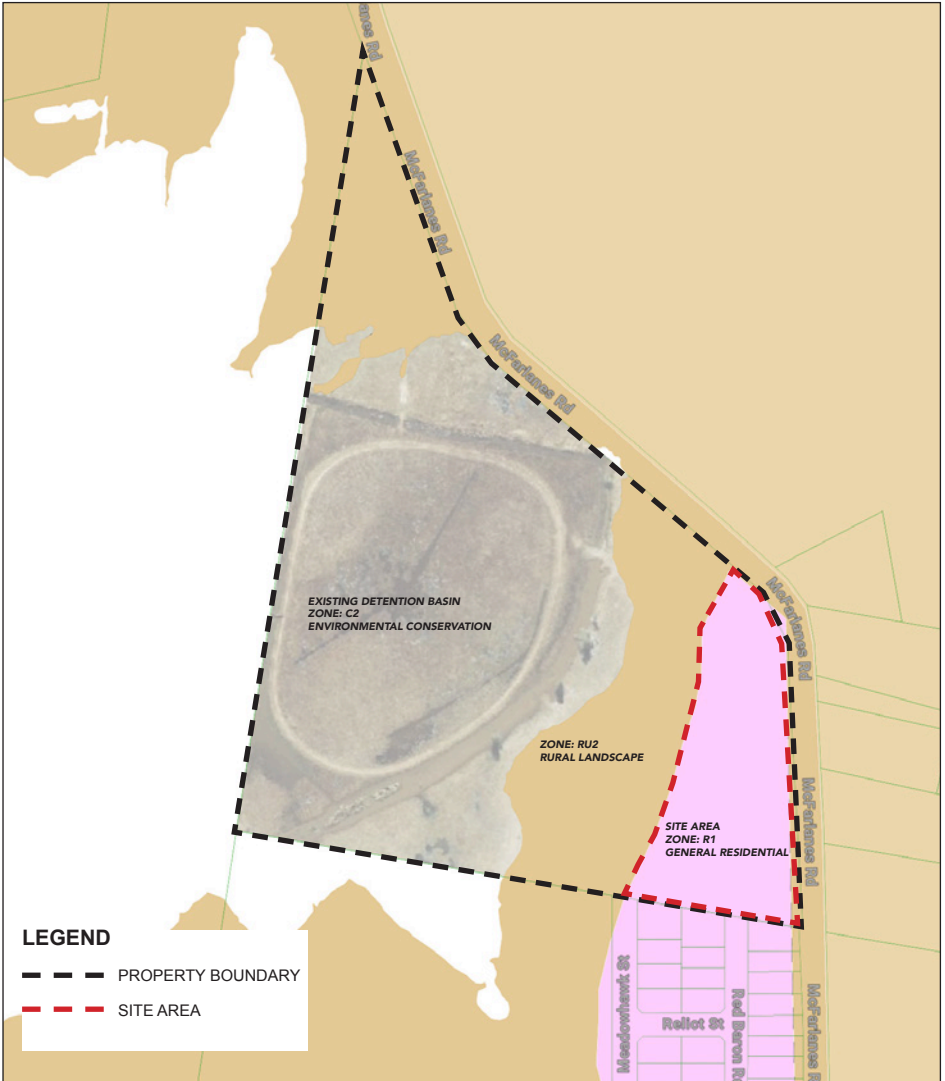
# 349 MCFARLANES ROAD, BERRY PARK

## LANDSCAPE DOCUMENTATION

CONTEXT PLAN



SITE PLAN



**SHEET INDEX**

	ISSUE	DESCRIPTION	DATE	
L01	COVER PAGE	A	SWC ISSUE	31/01/2022
L02	STREET TREE MASTER PLAN	A	SWC ISSUE	31/01/2022
L03	PLANT DETAILS	A	SWC ISSUE	31/01/2022
L04	MCFARLANES ROAD BUFFER	A	SWC ISSUE	31/01/2022
L05	DETENTION BASIN PLANTING PLAN	A	SWC ISSUE	31/01/2022
L06	LANDSCAPE NOTES	A	SWC ISSUE	31/01/2022

**GENERAL NOTES**

- IT IS THE RESPONSIBILITY OF THE CONTRACTOR (UNDERTAKING THE WORK) TO LOCATE ALL UNDERGROUND SERVICES PRIOR TO THE COMMENCEMENT OF WORKS.
- ALL EXISTING TREES (UNLESS NOMINATED FOR REMOVAL) ON SITE MUST BE PROTECTED THROUGHOUT THE DURATION OF THE DEMOLITION AND CONSTRUCTION PERIOD.
- TREE PROTECTION FENCING WITH ADEQUATE SIGNAGE MUST BE ERCTED IN ACCORDANCE WITH AS4970.
- NO STORAGE OF ANY MATERIAL OR MACHINERY SHALL BE PLACED WITHIN THE TREE PROTECTION ZONES. INCLUDING NO STOCKPILING OF SITE RUBBLE, CHANGING OF SOIL LEVELS OR LOCATING OF SERVICES WITHIN THE TREE PROTECTION ZONES.
- EROSION CONTROL MEASURES MUST BE INSTALLED ON SITE BEFORE EXCAVATION IS COMMENCED.
- SHOULD ANY ABORIGINAL RELICS BE UNEXPECTEDLY DISCOVERED THEN ALL EXCAVATIONS OR FURTHER DISTURBANCE TO THE AREA SHOULD CEASE IMMEDIATELY AND NOTIFY PROJECT OFFICER. REFER SPECIFICATION.
- RETAIN ALL SURVEY MARKS - IN ACCORDANCE WITH THE SURVEYING AND SPATIAL INFORMATION ACT 2002 . .

REV.	DATE	DESCRIPTION
B	01.02.22	FOR SUBMISSION
A	31.01.22	PRELIMINARY

NOTES:  
 1. All work is to be carried out in accordance with relevant Australian Standards, the Building Code of Australia, all Local and State Government Ordinances, Local Authorities' Regulations and other relevant Authorities concerned.  
 2. Locate and protect all services on site prior to excavation.  
 3. All dimensions to be checked and verified on site prior to the commencement of any work. Do not scale off drawings. Follow written dimensions and if in doubt, obtain written confirmation from the Superintendent.  
 4. Drawings are to be read in conjunction with the Specification.  
 5. Landscape drawings are to be read in conjunction with the relevant architectural, engineering (i.e. civil, structural, hydraulic, mechanical, electrical) drawings and specifications.  
 6. No responsibility will be accepted by GSP for any variations in design, builder's method of construction or materials used, deviation from the specification without express permission or accepted work practices; resulting in inferior construction.



**GSP**  
 Studio 3, 19 Bolton Street  
 Newcastle, NSW, 2300  
 P 0423684382  
 W greenspaceplanning.com.au  
 ABN 88625410433

PROJECT:  
 349 MCFARLANES ROAD  
 BERRY PARK

SHEET:  
**COVER PAGE**  
 SCALE: AS SHOWN

JOB NUMBER: <b>210300</b>	DATE: 01.02.22
STATUS: <b>SWC ISSUE</b>	SHEET: <b>1 OF 6</b>
DRAWING NUMBER: <b>L01</b>	REVISION: <b>B</b>
DRAWING SHEET SIZE: A3	





**LEGEND**

- SITE BOUNDARY
- LOT BOUNDARY
- STAKE AND WIRE FENCING
- STREET TREE TO BE ALIGNED TO CENTRE OF LOT AS SHOWN
- BUILDING ENVELOPE
- ZONING LINE
- 6.5M FLOOD CONTOUR
- TURF
- MCFARLANES ROAD BUFFER
- DETENTION BASIN PLANTING
- HYDROSEED BASIN PLANTING
- PROPOSED TREE PLANTING
- A TRISTANIOPSIS LAURINA 'LUSCIOUS' (KANOOKA GUM)
- B ELAEOCARPUS RETICULATUS (BLUEBERRY ASH)

**STREET TREE PLANTING SCHEDULE**

KEY	BOTANICAL NAME	COMMON NAME	MATURE H X W	QUANTITY	POT SIZE
A	<i>Tristaniopsis laurina</i> 'Luscious'	Kanooka Gum	8m x 5m	25	75L
B	<i>Elaeocarpus reticulatus</i>	Blueberry Ash	10m x 6m	11	75L

A

B

REV.	DATE	DESCRIPTION
B	01.02.22	FOR SUBMISSION
A	31.01.22	PRELIMINARY

**NOTES:**

- All work is to be carried out in accordance with relevant Australian Standards, the Building Code of Australia, all Local and State Government Ordinances, Local Authorities' Regulations and other relevant Authorities concerned.
- Locate and protect all services on site prior to excavation.
- All dimensions to be checked and verified on site prior to the commencement of any work. Do not scale off drawings. Follow written dimensions and if in doubt, obtain written confirmation from the Superintendent.
- Drawings are to be read in conjunction with the Specification.
- Landscape drawings are to be read in conjunction with the relevant architectural, engineering (i.e. civil, structural, hydraulic, mechanical, electrical) drawings and specifications.
- No responsibility will be accepted by GSP for any variations in design, builder's method of construction or materials used, deviation from the specification without express permission or accepted work practices; resulting in inferior construction.

www.dialbeforeyoudig.com.au

**GSP**

Studio 3, 19 Bolton Street  
Newcastle, NSW, 2300

P 0423684382  
W greenspaceplanning.com.au  
ABN 88625410433

PROJECT:

349 MCFARLANES ROAD  
BERRY PARK

SHEET:

**STREET TREE PLAN**

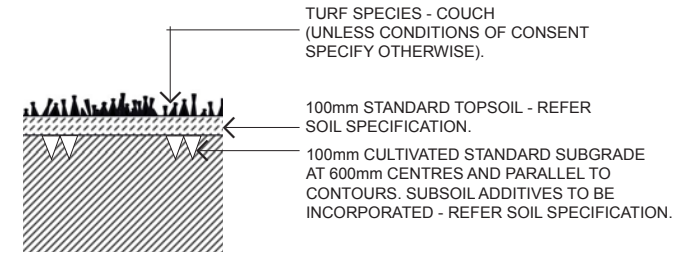
SCALE: 1:800 @ A3

JOB NUMBER: <b>210300</b>	DATE: 01.02.22
STATUS: <b>SWC ISSUE</b>	SHEET: <b>2 OF 6</b>
DRAWING NUMBER: <b>L02</b>	REVISION: <b>B</b>
DRAWING SHEET SIZE: A3	



**STREET TREES - GENERAL NOTES**

1. ALL STREET TREES TO CONFORM WITH AS2303:2015 - TREE STOCK FOR LANDSCAPE USE
2. PROVIDE ASSESSMENT OF CONFORMANCE WITH AS2303:2015 FROM THE SUPPLIER TO THE SITE SUPERINTENDENT FOR APPROVAL PRIOR TO PLANTING;
3. ALL TIMBER (STAKES / EDGING) IN CONTACT WITH THE GROUND, TO BE CLASS 1 DURABILITY HARDWOOD OR EQUIVALENT H4 TREATED PINE;
4. DO NOT LOCATE TREES WITHIN 4.0M OF STREET LIGHTS OR WHERE THE MATURE TREE CANOPY WILL INTERFERE WITH LIGHTING PERFORMANCE;
5. TREES TO BE LOCATED A MINIMUM CLEARANCE OF 2.5M FROM FINAL LOCATION OF STORMWATER PITS.
6. SEE BELOW FOR FURTHER NOTES.

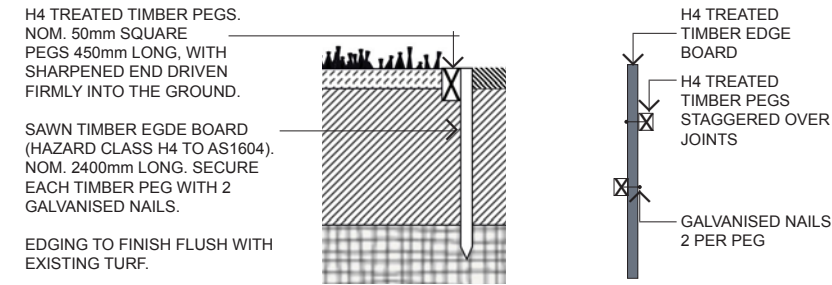


**PLANTING NOTES:**

- TURF TO BE LAID IN STRETCHER PATTERN WITH JOINTS STAGGERED AND CLOSE BUTTED.
- TURF REQUIREMENTS - REFER SPECIFICATION.

**D02 TURF DETAIL**

NOT TO SCALE



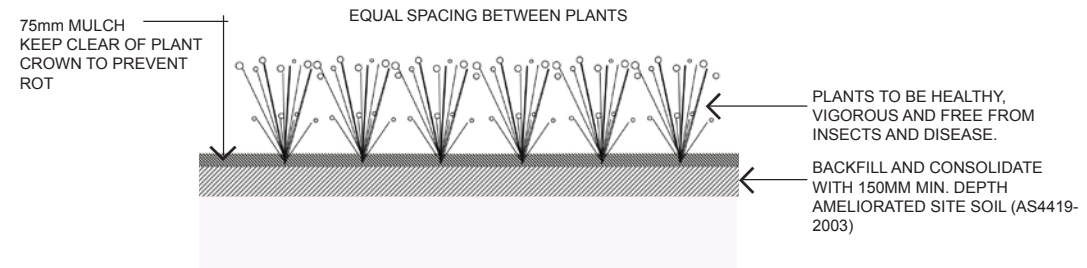
EDGING TO FINISH FLUSH WITH EXISTING TURF.

**NOTES:**

- GENERALLY PLACE PEGS ON THE MASS PLANTING SIDE AT 1200MM CTS AND ALSO AT THE END OF EACH TIMBER EDGE BOARD WHEN THERE IS A CHANGE OF DIRECTION
- FINISH 25MM BELOW EDGE BOARDS. DRIVE IN ON MASS PLANTING SIDE OF EDGING.
- MAKE GOOD TO EXISTING TURF IF DAMAGED DURING CONSTRUCTION. REFER TURF DETAIL 03.

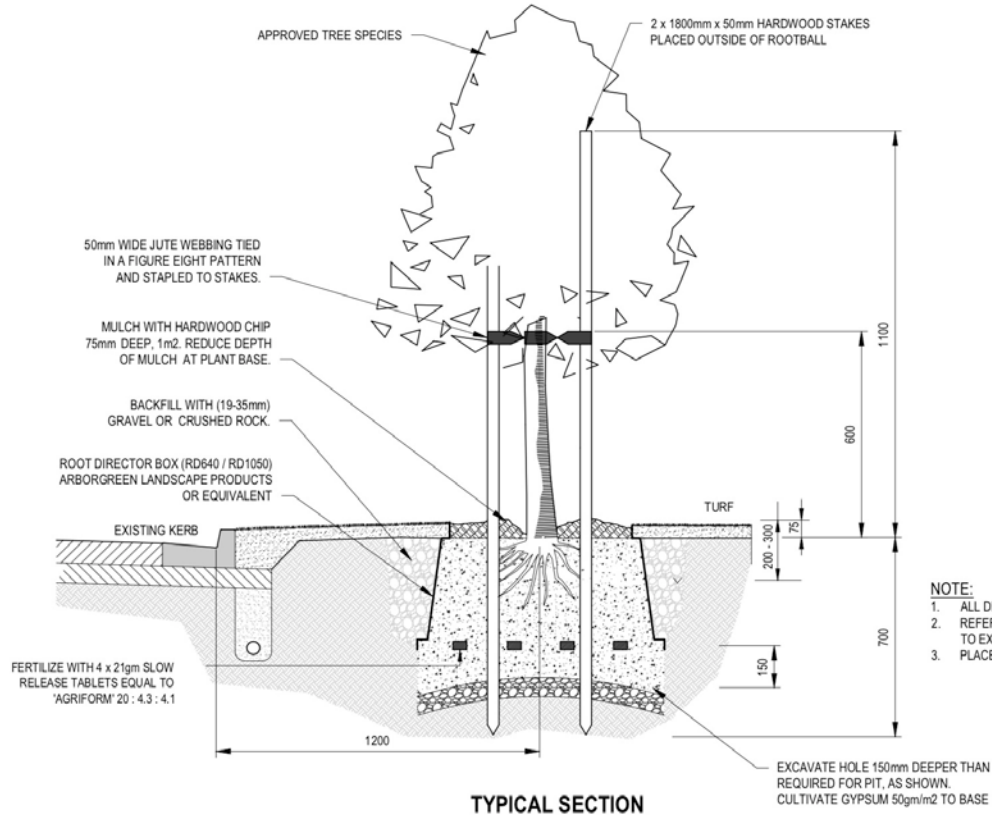
**D03 TIMBER EDGING**

NOT TO SCALE



**PLANTING NOTES:**

- ENSURE A MINIMUM SOIL DEPTH OF 900MM FOR LARGE SHRUBS, 600MM FOR SMALL SHRUBS AND 450MM FOR GRASSES AND GROUND COVERS.
- DISH MULCH TO BASE OF EACH PLANT
- ENSURE THE TOP OF EACH ROOT BALL IS LEVEL WITH THE FINISHED TOP OF SOIL LEVELS.
- INCORPORATE SOIL CONDITIONER AND FERTILISER WHEN PLANTING FORESTRY TUBE AND 200MM POT SIZE TO RATES AS SPECIFIED.



- NOTE:**
1. ALL DIMENSIONS ARE IN MILLIMETRES.
  2. REFER TO SD001 FOR FOOTWAY ALLOCATIONS PRIOR TO EXCAVATION WORKS.
  3. PLACE HARDWOOD STAKES PARALLEL TO KERB.

**D01 MCC STREET TREE PLANTING DETAIL (REF: SD049)**

NOT TO SCALE

**D04 MASS PLANTING**

NOT TO SCALE

REV.	DATE	DESCRIPTION
B	01.02.22	FOR SUBMISSION
A	31.01.22	PRELIMINARY

- NOTES:**
1. All work is to be carried out in accordance with relevant Australian Standards, the Building Code of Australia, all Local and State Government Ordinances, Local Authorities' Regulations and other relevant Authorities concerned.
  2. Locate and protect all services on site prior to excavation.
  3. All dimensions to be checked and verified on site prior to the commencement of any work. Do not scale off drawings. Follow written dimensions and if in doubt, obtain written confirmation from the Superintendent.
  4. Drawings are to be read in conjunction with the Specification.
  5. Landscape drawings are to be read in conjunction with the relevant architectural, engineering (i.e. civil, structural, hydraulic, mechanical, electrical) drawings and specifications.
  6. No responsibility will be accepted by GSP for any variations in design, builder's method of construction or materials used, deviation from the specification without express permission or accepted work practices; resulting in inferior construction.



**GSP**  
 Studio 3, 19 Bolton Street  
 Newcastle, NSW, 2300  
 P 0423684382  
 W greenspaceplanning.com.au  
 ABN 88625410433

PROJECT:  
 349 MCFARLANES ROAD  
 BERRY PARK

SHEET:  
**PLANT DETAILS**

SCALE: AS SHOWN



JOB NUMBER: <b>210300</b>	DATE: 01.02.22
STATUS: <b>SWC ISSUE</b>	SHEET: <b>3 OF 6</b>
DRAWING NUMBER: <b>L03</b>	REVISION: <b>B</b>
DRAWING SHEET SIZE: A3	

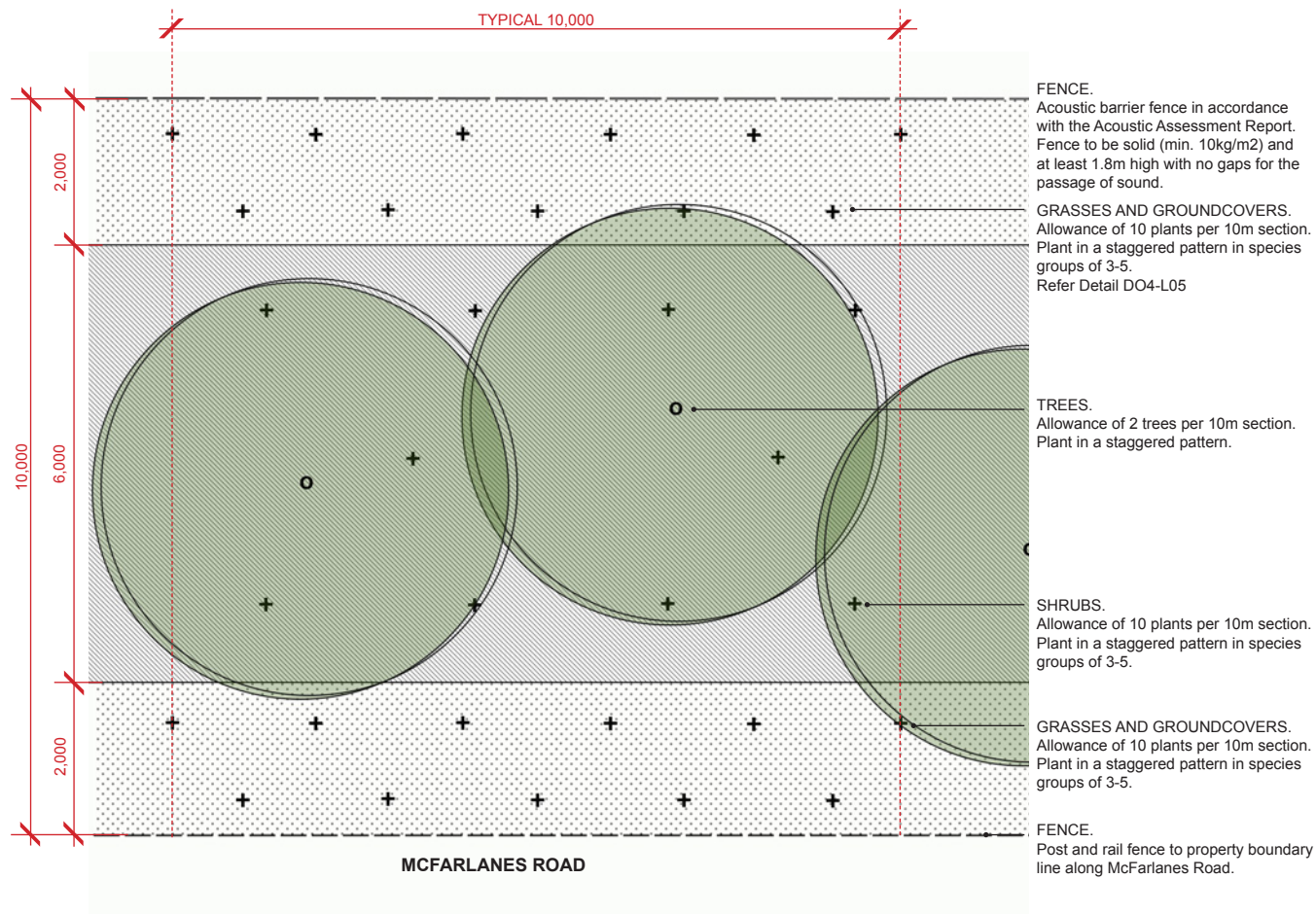
**McFARLANES ROAD BOUNDARY - LANDSCAPE BUFFER PLANTING**

**Landscape Approach**

- A ten (10) metre vegetation corridor has been proposed along the boundary between the proposed residential lots and McFarlanes Road, with the intention to provide an acoustic and visual buffer.
- The landscape treatment buffer is proposed to contain a suitable combination of trees, shrubs and grasses to create visual diversity, soften the built form and promote a rural woodland character.
- A mix of appropriate native species is proposed which have a demonstrated ability to be sustainable with low maintenance intervention. Native species will also enhance the environmental value associated with the buffer planting.
- A staggered planting pattern is proposed in order to simulate a natural setting.

**PLANT SCHEDULE**

Botanical Name	Common Name	Mature Height	Pot Size	Quantity
<b>TREES</b>				
<i>Angophora floribunda</i>	Rough-barked Apple	20m	tubestock	125
<i>Casuarina glauca</i>	Swamp Oak	20m	tubestock	125
<i>Corymbia maculata</i>	Spotted Gum	30m	tubestock	125
<i>Eucalyptus punctata</i>	Grey Gum	25m	tubestock	125
<i>Eucalyptus tereticornis</i>	Forest Grey Gum	50m	tubestock	125
<b>SHRUBS</b>				
<i>Acacia ulicifolia</i>	Prickly Moses	2m	tubestock	625
<i>Breynia oblongifolia</i>	Coffee Bush	4m	tubestock	625
<i>Correa alba</i>	White Correa	1.5m	tubestock	625
<i>Westringia fruticosa</i>	Coastal Rosemary	1.5m	tubestock	625
<b>GRASSES</b>				
<i>Dianella revoluta</i>	Blue Flax Liliy	0.4m	tubestock	1,250
<i>Hardenbergia violacea</i>	Native sarsparilla	0.2m	tubestock	1,250
<i>Lomandra longifolia</i>	Mat Rush	1m	tubestock	1,250
<i>Themada australis</i>	Kangaroo Grass	0.5m	tubestock	1,250



**FENCE.**  
Acoustic barrier fence in accordance with the Acoustic Assessment Report. Fence to be solid (min. 10kg/m<sup>2</sup>) and at least 1.8m high with no gaps for the passage of sound.

**GRASSES AND GROUNDCOVERS.**  
Allowance of 10 plants per 10m section. Plant in a staggered pattern in species groups of 3-5. Refer Detail D04-L05

**TREES.**  
Allowance of 2 trees per 10m section. Plant in a staggered pattern.

**SHRUBS.**  
Allowance of 10 plants per 10m section. Plant in a staggered pattern in species groups of 3-5.

**GRASSES AND GROUNDCOVERS.**  
Allowance of 10 plants per 10m section. Plant in a staggered pattern in species groups of 3-5.

**FENCE.**  
Post and rail fence to property boundary line along McFarlanes Road.

**D04 MCFARLANES ROAD - 10M BUFFER - TYPICAL PLANTING PLAN**

NOT TO SCALE

REV.	DATE	DESCRIPTION
B	01.02.22	FOR SUBMISSION
A	31.01.22	PRELIMINARY
REV.	DATE	DESCRIPTION

- NOTES:**
- All work is to be carried out in accordance with relevant Australian Standards, the Building Code of Australia, all Local and State Government Ordinances, Local Authorities' Regulations and other relevant Authorities concerned.
  - Locate and protect all services on site prior to excavation.
  - All dimensions to be checked and verified on site prior to the commencement of any work. Do not scale off drawings. Follow written dimensions and if in doubt, obtain written confirmation from the Superintendent.
  - Drawings are to be read in conjunction with the Specification.
  - Landscape drawings are to be read in conjunction with the relevant architectural, engineering (i.e. civil, structural, hydraulic, mechanical, electrical) drawings and specifications.
  - No responsibility will be accepted by GSP for any variations in design, builder's method of construction or materials used, deviation from the specification without express permission or accepted work practices, resulting in inferior construction.



**GSP**  
Studio 3, 19 Bolton Street  
Newcastle, NSW, 2300  
P 0423684382  
W greenspaceplanning.com.au  
ABN 88625410433

PROJECT:  
**349 MCFARLANES ROAD  
BERRY PARK**

SHEET:  
**MCFARLANES ROAD  
BUFFER PLANTING**

SCALE: AS SHOWN

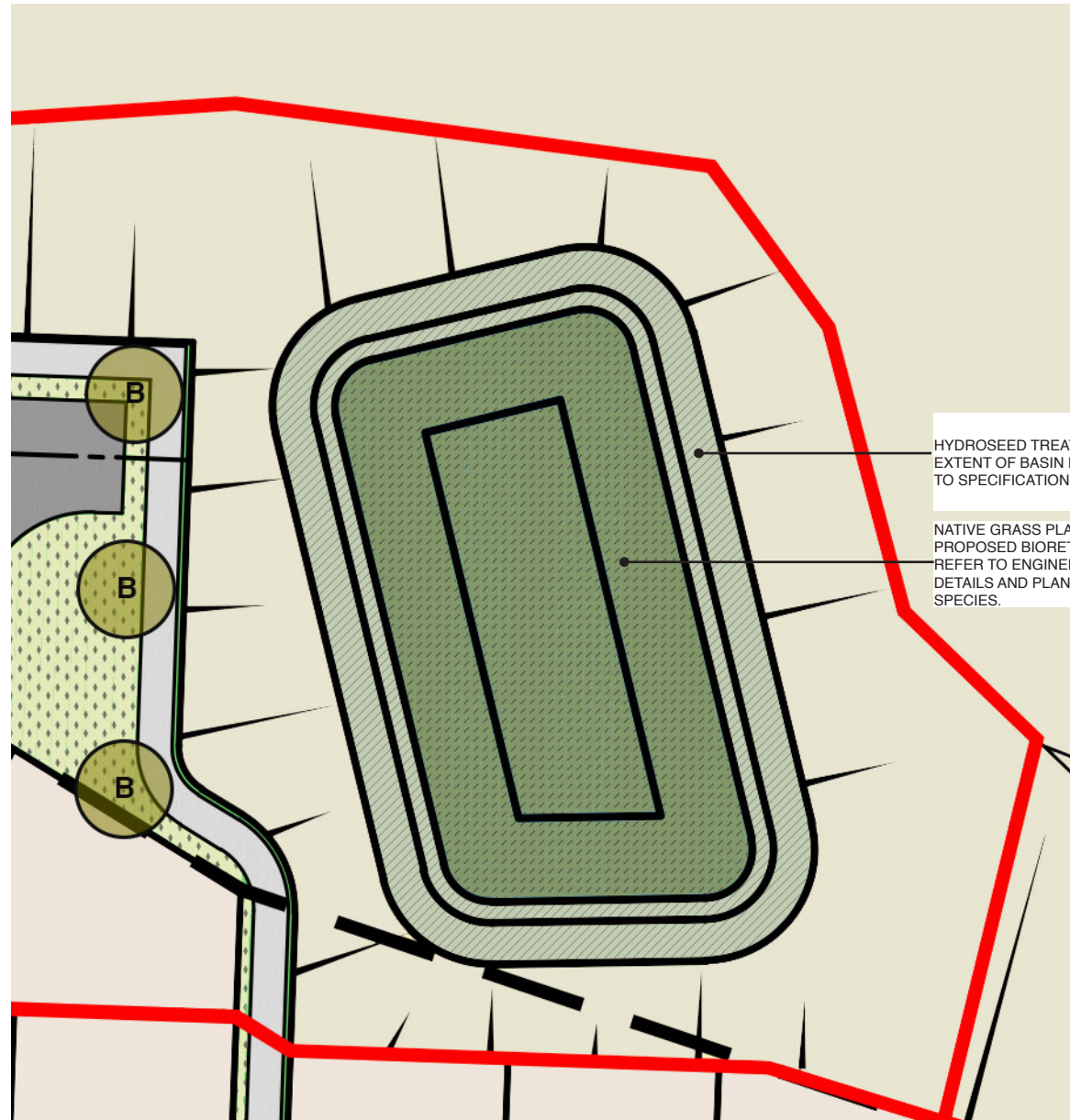


JOB NUMBER: <b>210300</b>	DATE: 01.02.22
STATUS: <b>SWC ISSUE</b>	SHEET: <b>4 OF 6</b>
DRAWING NUMBER: <b>L04</b>	REVISION: <b>B</b>
DRAWING SHEET SIZE: A3	



**LEGEND**

- EXTENT OF WORKS
- LOT BOUNDARY
- BASIN EDGE  
REFER ENGINEERING PLANS
- HYDRO SEED - COUCH TURF
- BIO-RETENTION PLANTING  
REFER PLANT SCHEDULE AND DETAILS



HYDROSEED TREATMENT TO EXTENT OF BASIN BATTER. REFER TO SPECIFICATION FOR DETAILS.

NATIVE GRASS PLANTING TO EXTENT OF PROPOSED BIORETENTION AREA. REFER TO ENGINEER'S PLANS FOR DETAILS AND PLANT SCHEDULE FOR SPECIES.

**HYDROSEEDING SPECIFICATION**

1. HYDROSEEDING SHALL BE CARRIED OUT BY A SPECIALIST IN HYDROSEEDING, SUCH AS SPRAYGRASS OR SIMILAR APPROVED. WORK SHALL BE UNDERTAKEN TO AREAS NOMINATED ONLY AS PER SUPPLIER/INSTALLER'S SPECIFICATIONS.

**SUPPLY OF SEED**  
2. CERTIFIED SEED ONLY SHALL BE SUPPLIED.

**PREPARATION FOR HYDROSEEDING**

3. STORAGE TANKS, CONTAINERS AND EQUIPMENT TO BE USED FOR HYDROSEEDING MUST BE CLEAN AND FREE OF CONTAMINATION FROM PREVIOUS OPERATIONS.

4. BEFORE SEEDING COMMENCES, THE AREAS TO BE SEEDED SHALL BE ERADICATED OF WEEDS AND ANY EXISTING VEGETATION GROWTH (EXCEPT NATIVE VEGETATION) SHALL BE SLASHED TO A HEIGHT OF 150MM. TRASH BUILD UP AND CUT MATERIAL SHALL BE REMOVED FROM THE AREA PRIOR TO SPRAYING WITH A KNOCKDOWN HERBICIDE (INCORPORATING A HERBICIDE MARKER). THE HERBICIDE SHALL BE USED ACCORDING TO THE MANUFACTURER'S RECOMMENDED RATES AND ANY OFF-TARGET DAMAGE SHALL BE RECTIFIED BY THE CONTRACTOR.

5. AREAS SPRAYED WITH HERBICIDE MUST REMAIN UNDISTURBED FOR A MINIMUM PERIOD OF TWO WEEKS OR SUCH LONGER PERIOD RECOMMENDED BY THE HERBICIDE MANUFACTURER.

**SLOPES**

6. TYNE SLOPES WITH GRADIENTS OF 5 TO 1 OR FLATTER GENERALLY PARALLEL TO THE SURFACE CONTOURS TO A DEPTH OF 150 MM TO PRODUCE A LOOSE SURFACE AND REMOVE ALL STONES LARGER THAN 100 MM IN SIZE, RUBBISH AND OTHER MATERIALS THAT MAY HINDER GERMINATION BEFORE TOPSOILING.

7. PREPARE BATTERS STEEPER THAN 5 TO 1 BY THREE PASSES OF A STEEL CHAIN OF MINIMUM WEIGHT 25 KG/M TO REMOVE LOOSE MATERIAL, OR BY ANOTHER METHOD WHICH PRODUCES A SIMILAR RESULT, NO EARLIER THAN 7 DAYS BEFORE SEEDING. THE TREATED SURFACE MUST HAVE ALL FURROWS ALIGNED WITH THE CONTOURS.

8. WHERE BATTERS HAVE BEEN STEPPED, REMOVE ALL LOOSE STONES LARGER THAN 50 MM AND ALL RUBBISH.

**TOPSOIL**

9. ALL UNCONTAMINATED TOPSOIL STOCKPILED AT THE COMMENCEMENT OF THE EARTHWORKS MUST BE USED IN THE VEGETATION WORK. IMPORTED TOPSOIL MAY BE USED TO MAKE UP FOR ANY SHORTFALL IN THE QUANTITY AVAILABLE FROM THE SITE.

10. APPLY TOPSOIL UNIFORMLY TO ANY AREAS PROPOSED TO BE VEGETATED, WHICH DO NOT HAVE ADEQUATE TOPSOIL COVERAGE, TO A MINIMUM DEPTH OF 150MM. WHERE BATTERS HAVE BEEN STEPPED, LOOSELY COVER THE STEPS TO PROVIDE A WEDGE OF TOPSOIL ON EACH STEP WHICH IS 30 MM TO 70 MM DEEP AGAINST THE VERTICAL FACE AT THE BACK OF THE STEP.

**HYDROSEEDING APPLICATION RATES**

MATERIAL	RATE PER HECTARE
WATER	20,000 LITRES
ORGANIC FERTILISER: PELLETTISED POULTRY MANURE	250KG
SEED (COUCH)	7.5KG 3.75%
BIODEGRADABLE GREEN DYE	AS RECOMMENDED
BINDER: GRANULATED 'GUAR GUM'	60KG
WOOD FIBRE MULCH	2,500KG

**SOWING**

11. CARRY OUT HYDROMULCHING / HYDROSEEDING WITHIN 2 DAYS OF COMPLETION OF SOIL PREPARATION OR, IF DELAYED BY THE WEATHER CONDITIONS LISTED BELOW, AS SOON AS WEATHER CONDITIONS PERMIT.

12. AGITATE CONTINUOUSLY THE SLURRY TO MAINTAIN A UNIFORM CONSISTENCY DURING APPLICATION. APPLY IT UNIFORMLY OVER THE WHOLE SURFACE AT THE RATE SPECIFIED.

13. THE SPRAYED HYDROMULCH LAYER WITHIN 48 HOURS OF APPLICATION MUST HAVE A MINIMUM THICKNESS AT ANY LOCATION OF 5 MM WHEN USING SUGAR CANE MULCH (MIXED WITH SHREDDED PAPER), OR 2 MM WHEN USING WOOD FIBRE.

14. DO NOT APPLY HYDROSEEDING, HYDROMULCHING AND STRAW MULCHING:  
(A) WHEN WINDS EXCEED 15 KM/HR;  
(B) WHEN TEMPERATURES EXCEED 37°C,  
(C) WHERE THE SURFACE IS TOO WET; OR  
(D) DURING RAIN PERIODS OR WHEN RAIN APPEARS IMMINENT.

**PLANTING SCHEDULE**

KEY	BOTANICAL NAME	COMMON NAME	POT SIZE	MATURE HEIGHT	DENSITY (QTY/M2)
<b>BIO-FILTRATION PLANTING</b>					
RG	<i>Carex appressa</i>	Tall Sedge	Tube	0.8m	6 plants per m2
RG	<i>Ficinia nodosa</i>	Knobbly Club Rush	Tube	1.0m	
RG	<i>Lomandra hystrix</i>	River Mat Rush	Tube	1.0m	
RG	<i>Juncus flavidus</i>	Yellow Rush	Tube	0.7m	
RG	<i>Themeda triandra</i>	Kangaroo Grass	Tube	0.5m	

**NATIVE PLANTING SPECIFICATION**

TUBESTOCK IS THE PREFERRED METHOD OF RE-VEGETATION, CARRIED OUT USING HAND TREE PLANTING TOOLS WITH THE FOLLOWING METHOD:

- RAKE AWAY AREA TO EXPOSE SOIL;
- DIG HOLE AT LEAST TWICE SIZE OF POT;
- DISTURB THE SURROUNDING SUBSTRATE (UP TO 100MM) TO AVOID 'CLEAN' SIDES AND BASE OF HOLE;
- WHERE REQUIRED ADD A SLOW RELEASE FERTILISER AND WETTING AGENT TO THE BASE OF THE HOLE. COVER WITH EXISTING SOIL TO ENSURE THE PLANT ROOTS DO NOT COME IN DIRECT CONTACT WITH THE FERTILISER AND WETTING AGENT;
- PLACE THE PLANT IN THE HOLE SLIGHTLY BELOW SOIL LEVEL AND BACK-FILL THE HOLE;
- REPLACE MULCH AND MAINTAIN SPACE AROUND TRUNK SO IT IS KEPT CLEAR OF MULCH;
- ERECT 'GROW TUBE' AROUND EACH PLANT. REMOVE 'GROW TUBES' WHEN THE PLANTS ARE 1.5 TIMES THE HEIGHT OF THE 'GROW TUBE';
- WOODEN STAKES IDEALLY SHOULD BE PLACED NEXT TO ALL TREE AND LARGE SHRUB SPECIES, TO PREVENT INCIDENTAL DAMAGE TO PLANTS DURING MAINTENANCE ACTIVITIES. TREE GUARDS SHOULD BE PLACED OVER THE NEWLY PLANTED SEEDLINGS TO PROVIDE PROTECTION FROM GRAZING ANIMALS DURING THE PLANT ESTABLISHMENT PERIOD.
- WATER PLANTS THOROUGHLY WITHIN 1 HOUR OF PLANTING.
- SPRING IS THE PREFERRED TIME FOR PLANTING TO ALLOW FOR STRONG ESTABLISHMENT OF THE ROOT STRUCTURE AND PROMOTE GOOD PLANT GROWTH.

**NOTES:**

- All work is to be carried out in accordance with relevant Australian Standards, the Building Code of Australia, all Local and State Government Ordinances, Local Authorities' Regulations and other relevant Authorities concerned.
- Locate and protect all services on site prior to excavation.
- All dimensions to be checked and verified on site prior to the commencement of any work. Do not scale off drawings. Follow written dimensions and if in doubt, obtain written confirmation from the Superintendent.
- Drawings are to be read in conjunction with the Specification.
- Landscape drawings are to be read in conjunction with the relevant architectural, engineering (i.e. civil, structural, hydraulic, mechanical, electrical) drawings and specifications.
- No responsibility will be accepted by GSP for any variations in design, builder's method of construction or materials used, deviation from the specification without express permission or accepted work practices, resulting in inferior construction.



**GSP**  
Studio 3, 19 Bolton Street  
Newcastle, NSW, 2300  
P 0423684382  
W greenspaceplanning.com.au  
ABN 88625410433

PROJECT:  
349 MCFARLANES ROAD  
BERRY PARK

SHEET:  
**DETENTION BASIN  
PLANTING PLAN**

JOB NUMBER: <b>210300</b>	DATE: 01.02.22
STATUS: <b>SWC ISSUE</b>	SHEET: <b>5 OF 6</b>
DRAWING NUMBER: <b>L05</b>	REVISION: <b>B</b>
DRAWING SHEET SIZE: A3	

REV.	DATE	DESCRIPTION
B	01.02.22	FOR SUBMISSION
A	31.01.22	PRELIMINARY

# NOTES

## GENERAL

- THESE DRAWINGS ARE TO BE READ IN CONJUNCTION WITH ALL CONTRACTS, SPECIFICATIONS, REPORTS AND APPROVAL CONDITIONS.
- LANDSCAPE DOCUMENTATION IS ONLY TO BE USED FOR THE PURPOSE FOR WHICH IT WAS COMMISSIONED. UNAUTHORISED USE OF THIS DOCUMENT IS PROHIBITED.
- ALL DIMENSIONS ARE IN MILLIMETERS UNLESS NOTED OTHERWISE
- THE CONTRACTOR IS TO CONFIRM THE LOCATION OF ANY UNDERGROUND SERVICES PRIOR TO UNDERTAKING ANY EXCAVATION WORKS. THESE DRAWINGS DO NOT INDICATE THE EXTENT OF EXISTING SERVICES. DO NOT EXCAVATE BY MACHINE WITHIN 1M OF EXISTING UNDERGROUND SERVICES WITHOUT PRIOR APPROVAL OR IDENTIFICATION OF SERVICE LOCATION.
- THE CONTRACTOR IS RESPONSIBLE FOR LOCATING ALL SERVICES AND OBTAINING CLEARANCES AND APPROVALS.
- THE CONTRACTOR SHALL SET OUT THE WORKS TO THE LINES, LEVELS AND DIMENSIONS SHOWN IN THE CONTRACT DOCUMENTS, OR DIRECTED BY THE SUPERINTENDENT.
- ALL TREES, SHRUBS, GROUND COVERS AND GRASSING SUBJECT TO 52 WEEKS CONSOLIDATION.
- PROPRIETARY PRODUCTS AND SYSTEMS ARE TO BE INSTALLED ACCORDING TO MANUFACTURER SPECIFICATION.

## LANDSCAPE SETOUT NOTES

- VERIFY DIMENSIONS, LEVELS & DETAILS TO SITE CONDITIONS AND PRIOR WORKS, AND REPORT ALL DISCREPANCIES TO THE SUPERINTENDENT FOR RESOLUTION BEFORE COMMENCING WORK.
- COORDINATE ALL DRAINAGE AND LEVELS WITH HYDRAULIC AND CIVIL DOCUMENTATION.
- WHERE DESIGN LEVELS, FALLS AND CONTOURS NOT SHOWN, ALLOW FOR NEW F.S.L. TO MATCH EXISTING ADJACENT & TYP 2% DRAINAGE FALLS AND SEEK INSTRUCTION FROM SUPERINTENDENT.
- MODIFY ALL UTILITY LIDS & ALIGNMENTS (INCLUDING UNSURVEYED) TO AUTHORITY & REGULATORY REQUIREMENTS TO SUIT NEW WORKS. REFER SURVEY OF EXISTING CONDITIONS & ENGINEER'S DRAWINGS. REFER CIVIL DOCUMENTATION FOR DRAINAGE NETWORK, KERB ALIGNMENT & SETOUT.
- DISTRIBUTE LIKE JOINTS PARALLEL/PERPENDICULAR TO CONTROLLING EDGE GEOMETRY UNLESS DEFINED OR INSTRUCTED OTHERWISE. GAIN APPROVAL PRIOR TO POURING.
- INSTALL EXPANSION JOINTING TO ALL FIXED STRUCTURES INCLUDING SIGNS, LIDS, VENTS, LIGHTS, WALLS, SHELTERS, KERBS AND UTILITIES.
- ROOT BARRIER IS TO BE INSTALLED ADJACENT STORM WATER, WATER OR SEWER INFRASTRUCTURE WHERE REQUIRED TO PROTECT INDIVIDUAL SERVICES.
- ROOT BARRIER IS TO BE INSTALLED WHERE TREES ARE PLANTED WITHIN 2m FROM THE SIDE OF ANY GAS MAIN, NOT LESS THAN 1m FROM THE SIDE OF THE GAS MAIN TO THE CENTRE OF THE PROPOSED TREE.
- COORDINATE WORKS WITH IRRIGATION DESIGN AND SPECIFICATION (WHERE APPLICABLE).
- PROVIDE SMOOTH TRANSITIONS BETWEEN SLOPES OF DIFFERENT GRADIENTS AND DIRECTION. MODIFY THE GRADE SO THAT THE FINISH GRADE IS FLUSH WITH ALL PAVING SURFACES OR AS DIRECTED BY THE DRAWINGS. FILL DIPS AND REMOVE ANY BUMPS IN THE OVERALL PLANE OF THE SLOPE.

## PLANTS

- SUPPLY AND DELIVERY OF ALL TREES AND PLANTS TO CONFORM WITH AS2303:2015 - TREE STOCK FOR LANDSCAPE USE.
- TREE SUPPLY SIZE INDICATED IS TO BE CONSIDERED A MINIMUM. THE CONTRACTOR SHALL SOURCE SUITABLE STOCK AND GAIN APPROVAL FROM SUPERINTENDENT PRIOR TO ORDERING.
- TREES MUST BE OF GOOD QUALITY STOCK WITH WELL ESTABLISHED CANOPY IN WHICH NUMEROUS UPRIGHT BRANCHES ACHIEVE THE SPECIFIED MINIMUM HEIGHT WHEN PLANTED. SOURCE PLANTS FROM AN APPROVED NURSERY, WHICH ARE VIGOROUS, WELL ESTABLISHED, FREE FROM DISEASE AND PESTS, OF GOOD FOLIAGE, HAVE A HEALTHY LARGE ROOT SYSTEM WHICH DO NOT SHOW ANY EVIDENCE OF ROOT CURL, RESTRICTION OR DAMAGE.
- NATIVE GRASS & SHRUB SUPPLY SIZE INDICATED IS TO BE CONSIDERED A MINIMUM. THE CONTRACTOR SHALL SOURCE SUITABLE STOCK AND GAIN APPROVAL FROM SUPERINTENDENT PRIOR TO ORDERING.
- PLANT SPECIES QUANTITIES ARE PROVIDED BY AREA, THE CONTRACTOR SHALL SET-OUT PLANTS AT EVEN SPACING TO ENSURE CONSISTENT COVERAGE OF AREA INDICATED IN DRAWINGS.
- MAKE NO SUBSTITUTIONS. REPLACE PLANTS WHICH HAVE FAILED, BEEN DAMAGED OR REJECTED ONLY WITH PLANTS OF THE SAME TYPE, QUALITY AND SIZE.

## SOIL PREPARATION

- PRIOR TO THE INSTALLATION OF THE LANDSCAPE AND IRRIGATION SYSTEM, THE CONTRACTOR IS TO PREPARE THE SOIL TO ENSURE A PROPER ENVIRONMENT FOR PLANT ROOT DEVELOPMENT. APPLY WEED CONTROL MEASURES AS NECESSARY (GLYPHOSATE HERBICIDE - IN ACCORDANCE WITH MANUFACTURER'S RECOMMENDATION) WELL PRIOR TO SITE DISTURBANCE TO ENSURE TARGET VEGETATION IS COMPLETELY ERADICATED.
- FOR THE PURPOSES OF LANDSCAPE AREAS, SOIL SHALL BE FREE FROM WEEDS AND OTHER DELETERIOUS MATERIALS WHICH MAY BE TOXIC TO PLANT HEALTH. IMPORTED SOIL TO HAVE A PH RANGE OF 5.5-7 AND A SLAT CONTENT OF LESS THAN 0.1% (MEASURED OVEN DRY). SPREAD AND GRADE EVENLY AND ALLOW A LIGHT COMPACTION OF SOIL TO ENSURE LEVELS FACTOR A TOPPING MULCH LAYER, WHICH WILL FINISH FLUSH WITH SPECIFIED EDGING, PAVING AND THE LIKE AS SPECIFIED.

## PLANTING NOTES

- PLANT WITHIN 24 HOURS OF DELIVERY AND DO NOT PLANT IN UNSUITABLE CONDITIONS SUCH AS EXTREME HEAT, WIND, COLD OR RAIN. SET OUT PLANS AS INDICATED ON THE PLAN.
- PLANT HOLES ARE TO BE APPROXIMATELY TWICE THE WIDTH AND 100MM DEEPER THAN THE POT. ADD FERTILISER AND REMOVE PLANT FROM POT WITH MINIMAL DISTURBANCE TO THE ROOT-BALL AND GROWING MEDIA. ONCE PLANTS ARE IN THE GROUND BACKFILL WITH EXCAVATED SOIL TO ENSURE BASE OF STEM FINISHES FLUSH WITH FINISHED SOIL LEVEL. THOROUGHLY WATER ALL PLANTS WITH A DILUTED SEAWEED BASED SOLUTION, PRIOR TO PLANTING AND IMMEDIATELY AFTER. DEEP WATERING SHOULD BE UNDERTAKEN AT LEAST ONCE A WEEK FOR SIX WEEKS TO ENSURE PLANTS ARE KEPT MOIST BUT NOT WET. COVER AREA WITH MULCH AS SPECIFIED BELOW TO A DEPTH OF 50MM. KEEP TRUNK/STEM OF THE PLANT FREE FROM CONTACT WITH THE MULCH.

### SOIL TYPE 'A'

- TOP 200MMM SOIL TO BE EQUAL TO AS4419-2003 'ORGANIC SOIL' WITH TEXTURE TO AS4419-2003 TABLE 1 - SANDY LOAM.
- BELOW 200MM SOIL TO BE EQUIVALENT TO AS4419-2003 'SOIL BLEND' WITH MAXIMUM 5 PER CENT ORGANIC MATTER CONTENT. TEXTURE IN ACCORDANCE WITH TABLE 1 - SANDY LOAM (AS4419-2003).

### SOIL TYPE 'B'

- WHERE EXISTING AMELIORATED TOP SOIL MEETS THE REQUIREMENTS FOR IMPORTED TOPSOIL OR OTHERWISE APPROVED BY THE SUPERINTENDENT.
- IN THE INSTANCE WHERE THE EXISTING TOP SOIL DOES NOT MEET THE REQUIREMENTS, AMELIORATED SITE TOPSOIL OR IMPORTED GENERAL PURPOSE SOIL MAY BE USED. SOIL NEEDS TO BE FREE FROM NOXIOUS WEEDS. THE CONTRACTOR IS RESPONSIBLE FOR THE DISPOSAL OF EXCESS SOIL EXCAVATED IN THE PROCESS.

### SITE TOPSOIL - SOIL TESTS

- SOIL TESTS ARE TO BE CARRIED OUT ON SITE TOP SOIL WHERE PLANTING SPECIFIES NATIVE SPECIES; SAMPLING IN ACCORDANCE WITH AS4419 (2003).
- AMELIORATE TOP SOIL IN ACCORDANCE WITH SOIL TEST RESULTS AND IF UNSUITABLE IMPORT SUITABLE TOPSOIL TO SUPPORT NATIVE PLANT GROWTH.

### MULCH

- ENSURE MULCH IS FREE FROM DELETERIOUS AND EXTRANEIOUS MATTER SUCH AS SOIL, WEEDS, STONES AND STICKS. MULCH SHOULD BE ANL 'FOREST BLEND' OR EQUIVALENT, UNLESS OTHERWISE SPECIFIED. RAKE AND TO AN EVEN SURFACE FLUSH WITH SURROUNDING FINISH LEVELS.

### FERTILISERS

- APPLY (IN ACCORDANCE WITH MANUFACTURER'S RECOMMENDATIONS) SLOW RELEASE FERTILISERS, APPROPRIATE FOR NATIVE OR EXOTIC SPECIES TYPE, SUCH AS OSMOCOTE OR AGRIFORM TABLETS ON ALL PLANTS.
- PLANTS: 8/9mth SLOW RELEASE FERTILISER - N:P:K 8:1:5 (NATIVES)
- TURF: SPREAD FERTILISER OVER TOPSOIL BEFORE LAYING TURF. COMPLETE LAWN FERTILISER. N:P:K 10:4:5

### TURF

- OBTAIN TURF FROM A SPECIALIST GROWER OF CULTIVATED TURF. A 'CERTIFICATE OF AUTHENTICITY' IS TO ACCOMPANY SUPPLY.
- TURF SUPPLIED TO BE FRESH, VERDANT AND HEALTHY, FREE OF WEEDS, SOIL PESTS AND DISEASE. TURF SHOULD BE OF EVEN THICKNESS (25MM) AND WELL ROOTED GRASS.
- PREPARE FOR, LEVEL AND LAY CULTIVATED COUCH TURF TO ALL AREAS NOMINATED ON THE PLANS AS TURF. TURFING TO ALSO BE LAID WHERE REQUIRED TO MAKE GOOD ANY AREAS DISTURBED DURING CONSTRUCTION.
- TURF TO BE LAID WITHIN 24 HOURS OF DELIVERY ON SITE.
- TURF UNDERLAY TOPSOIL TO COMPLY WITH AS4419 (2003) AND NOT CONTAIN STONES OR PLANT ROOTS (> 10MM SIZE), CLAY LUMPS OR MATERIALS TOXIC TO HUMAN OR PLANT HEALTH.
- LAY TURF ON A MOIST SURFACE, ALONG THE CONTOUR LINES WITH CLOSED BUTTED JOINTS TO ENSURE TURF FLUSH WITH ADJACENT SURFACES.
- ROLL FRESHLY LAID TURF, AS SOON AS PRACTICAL, WITH A ROLLER AND WATER AS NECESSARY TO KEEP SOIL MOIST.
- UNTIL ESTABLISHED, PROTECT NEWLY TURFED AREAS FROM TRAFFIC.

## MAINTENANCE

- CARE OF NEWLY PLANTED PLANTS IS CRITICAL, PARTICULARLY IN THE FIRST 12 MONTHS, DEPENDING ON THE SPECIES AND MATURITY. ADOPT A STRATEGY TO ENSURE WATERING IS UNDERTAKEN TO MAINTAIN ADEQUATE SOIL MOISTURE AND AVOID OVER-WATERING TO AVOID ROOT ROT.
- WHERE REQUIRED, IRRIGATION SYSTEMS WILL BE FULLY AUTOMATIC, DESIGNED AND INSTALLED TO COMPLY WITH AS 2698, AS 2698.1-1994, AS 2698.2-1985, AS 2698.3-1990, HUNTER WATER AND OTHER RELEVANT AUTHORITY REGULATIONS.

### MAINTENANCE

- ALL LANDSCAPE WORKS ARE TO BE MAINTAINED FOR A PERIOD OF 52 WEEKS AFTER FINAL COMPLETION. REPLACE ALL PLANTS WHICH HAVE FAILED WITH THE SAME SPECIES. MULCH IS TO BE MAINTAINED AT SPECIFIED DEPTH. ALL PLANTS AND TURF SHALL BE WATERED ON A REGULAR BASIS TO MAINTAIN MOISTURE LEVELS REQUIRED FOR OPTIMUM GROWTH. ALL GARDEN AREAS ARE TO BE MAINTAINED FREE FROM WEEDS.

## WITNESS AND HOLD POINTS

- THE FOLLOWING HOLD POINTS AND WITNESS POINTS, WHERE DEEMED APPLICABLE, ARE TO BE CARRIED OUT BY COUNCIL'S NOMINATED PROJECT MANAGER:

HOLD POINT	COMPLETED	NOTES
EXCAVATION OF TREE PITS		
CERTIFICATION OF ALL ASSOCIATED IMPORTED TOPSOIL, IN ACCORDANCE WITH AS4419-2003		
TREE DELIVERY TO RELEVANT AS2303:2015 STANDARD		
<b>WITNESS POINT</b>		
COMMENCEMENT OF TREE PLANTING		
COMPLETION OF TREE PLANTING		

REV.	DATE	DESCRIPTION
B	01.02.22	FOR SUBMISSION
A	31.01.22	PRELIMINARY

### NOTES:

- All work is to be carried out in accordance with relevant Australian Standards, the Building Code of Australia, all Local and State Government Ordinances, Local Authorities' Regulations and other relevant Authorities concerned.
- Locate and protect all services on site prior to excavation.
- All dimensions to be checked and verified on site prior to the commencement of any work. Do not scale off drawings. Follow written dimensions and if in doubt, obtain written confirmation from the Superintendent.
- Drawings are to be read in conjunction with the Specification.
- Landscape drawings are to be read in conjunction with the relevant architectural, engineering (i.e. civil, structural, hydraulic, mechanical, electrical) drawings and specifications.
- No responsibility will be accepted by GSP for any variations in design, builder's method of construction or materials used, deviation from the specification without express permission or accepted work practices; resulting in inferior construction.



## GSP

Studio 3, 19 Bolton Street  
Newcastle, NSW, 2300

P 0423684382  
W greenspaceplanning.com.au  
ABN 88625410433

### PROJECT:

349 MCFARLANES ROAD  
BERRY PARK

### SHEET:

## LANDSCAPE NOTES

SCALE: AS SHOWN



### JOB NUMBER:

210300

### DATE:

01.02.22

### STATUS:

SWC ISSUE

### SHEET:

6 OF 6

### DRAWING NUMBER:

L06

### REVISION:

B

DRAWING SHEET SIZE: A3