



landscape development application

ReGrowth Kurri Kurri Landscape Design

Loxford Project Management Pty Ltd

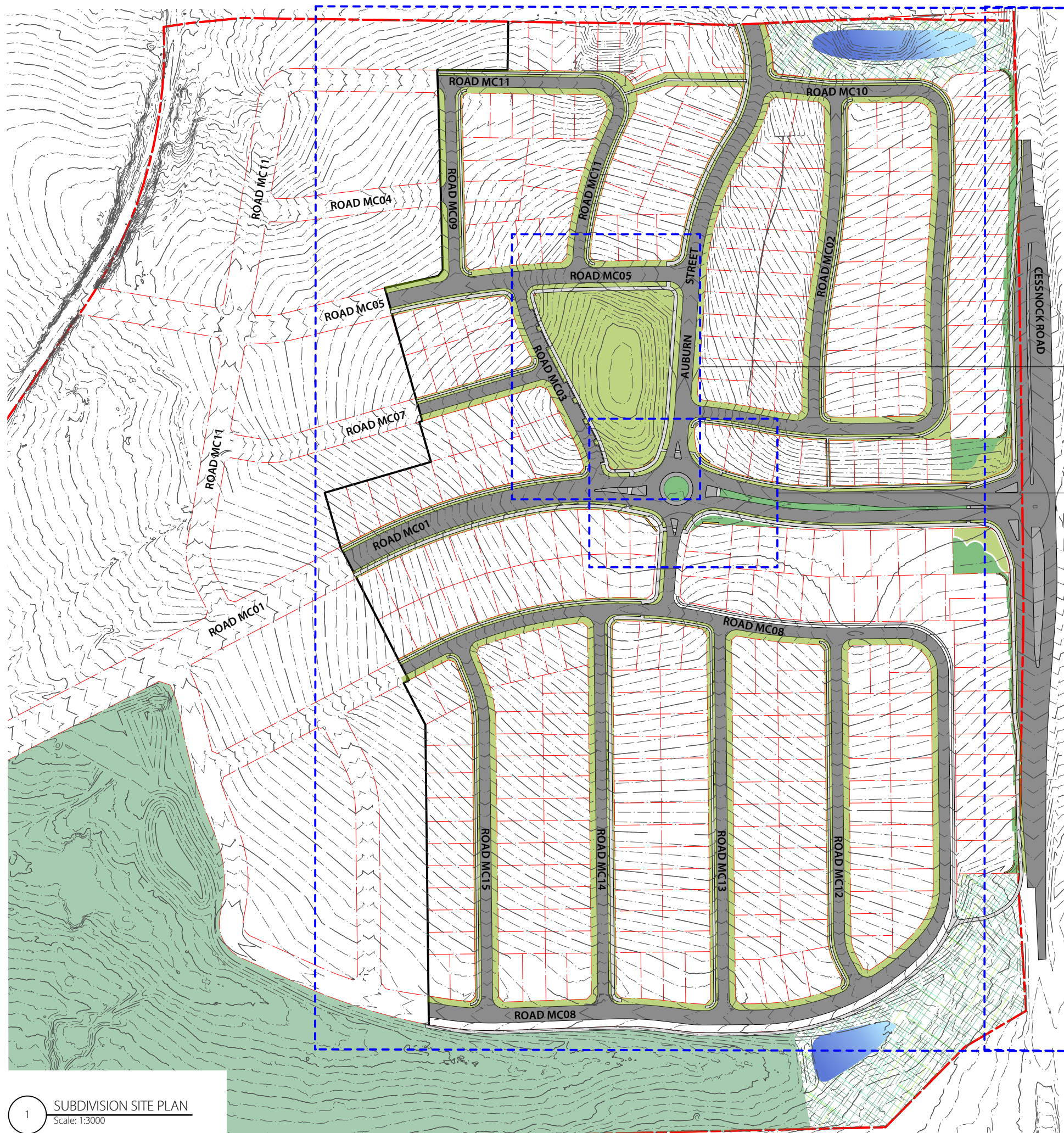
Cessnock Road, Gillieston Heights

DRAWING REGISTER

DRAWING NUMBER	SHEET NAME	REV. No.	REV. DATE
13808.5 >> DA L001	Site Plan	C	13/2/22
13808.5 >> DA L002	Subdivision Street Tree Masterplan	C	13/2/22
13808.5 >> DA L003	Subdivision Street Tree Palette	B	13/2/22
13808.5 >> DA L101	Cessnock Road Treatment	C	13/2/22
13808.5 >> DA L102	MC01 - Arterial Road Treatment	C	13/2/22
13808.5 >> DA L201	Cessnock Road Entry Feature - option a	D	13/2/22
13808.5 >> DA L301	Playground - Site Plan	C	13/2/22
13808.5 >> DA L302	Playground - Detail Plan	C	13/2/22
13808.5 >> DA L303	Playground - Sections	C	13/2/22

Site Plan | L001

ReGrowth Kurri Kurri Landscape Design



- 1
L301 PLAYGROUND
- 1
L101 CESSOCK ROAD TREATMENT
- 1
L102 MC01 ARTERIAL ROAD TREATMENT
- 1
L002 SUBDIVISION STREET TREE PLANTING

1 SUBDIVISION SITE PLAN
Scale: 1:3000

C	13/2/22	DA ISSUE
REV	DATE	COMMENTS

PROJECT:
ReGrowth Kurri Kurri Landscape Design

SITE:
**Cessnock Road,
Gillieston Heights**

CLIENT:
**Loxford Project Management
Pty Ltd**

13808.5-REGROWTH-landscape.vwx 13/2/22

DRAWN: AL / PW	DATE: 13/2/22	SCALE: @A3
-------------------	------------------	---------------

JOB NUMBER: PHASE: DWG No: REV:
13808.5 DA L001 C

Subdvision Street Tree Masterplan

ReGrowth Kurri Kurri Landscape Design

L002



Tree species list

Botanical Name	Common Name	H	W
DECIDUOUS TREES - collector roads			
<i>Acer rubrum 'Redpointe'</i>	Red Maple	10 m	4 m
<i>Nyssa sylvatica</i>	Blackgum	10 m	4 m
<i>Pistacia chinensis</i>	Chinese Pistacio	10 m	8 m
EVERGREEN TREES - local roads, median strip & buffer			
<i>Alloxylon flammeum</i>	Tree Waratah	12 m	6 m
<i>Alphitonia excelsa</i>	Red Ash	8 m	6 m
<i>Backhousia myrtifolia</i>	Grey Myrtle	6 m	4 m
<i>Buckinghamia celsissima</i>	Ivory Curl Flower	6 m	3 m
<i>Caesalpinia ferrea</i>	Leopard Tree	8 m	5 m
<i>Corymbia citriodora</i>	Lemon Scented Gum	20 m	10 m
<i>Corymbia maculata 'Gamai'</i>	Spotted Gum	10 m	4 m
<i>Elaeocarpus eumundii</i>	Smooth-leaved Quandong	8 m	4 m
<i>Eucalyptus robusta 'Matong'</i>	Swamp Mahogany	10 m	6 m
<i>Eucalyptus sideroxylon 'Rosea'</i>	Ironbark	12 m	6 m
<i>Ficus rubiginosa</i>	Port Jackson Fig	15 m	15 m
<i>Harpullia pendula</i>	Tulipwood	6 m	6 m
<i>Lophostemon confertus</i>	Brushbox	12 m	6 m
<i>Stenocarpus sinuatus</i>	Firewheel Tree	8 m	3 m

Legend

- SITE BOUNDARY
- STAGE BOUNDARY
- LOT BOUNDARY
- TURF
- MASS PLANTING
- FOOTPATH
- ACOUSTIC FENCE
- DETENTION AREA
- DETENTION BASIN
- DECIDUOUS TREE
- EVERGREEN TREE

Notes

- 1 Northern drainage reserve with native planting and trees to comply with APZ requirements (by others).
- 2 Existing trees to park to be protected, managed and replaced through revegetation program.
- 3 Mixed clear trunked and shade trees to playground.
- 4 Double avenue of small shade trees to path network.
- 5 Mixed evergreen trees to local roads, to increase biodiversity and canopy cover. Refer Tree species list.
- 6 Buffer planting to Cessnock road. Refer L101 and Tree species list.
- 7 Large feature tree (Ficus sp.) to roundabout.
- 8 Mixed evergreen native tree planting to median strip. Refer to Tree species list.
- 9 Feature deciduous trees to main collector roads, refer Tree species list.
- 10 Estate entry feature with mixed trees to establish biodiversity.
- 11 Estate entry feature with large iconic feature tree (Ficus sp.) and mixed trees to establish biodiversity.
- 12 Southern drainage reserve with native planting and trees to comply with APZ requirements (by others).
- 13 Existing trees to be retained and managed.

C 13/2/22 DA ISSUE
REV DATE COMMENTS

PROJECT:
ReGrowth Kurri Kurri Landscape Design

SITE:
Cessnock Road, Gillieston Heights

CLIENT:
Loxford Project Management Pty Ltd

13808.5-REGROWTH-landscape.vwx 13/2/22

DRAWN: AL / PW DATE: 23.01.22 SCALE: @A3

JOB NUMBER: PHASE: DWG No: REV:
13808.5 DA L002 C

Subdvision Street Tree Palette | L003

ReGrowth Kurri Kurri Landscape Design

deciduous trees - collector roads



Acer rubrum 'Redpointe' Red Maple



Nyssa sylvatica Blackgum



Pistacia chinensis Chinese Pistacio



Alloxylon flammeum Tree Waratah



Alphitonia excelsa Red Ash



Backhousia myrtifolia Grey Myrtle

evergreen trees - local roads

evergreen trees - local roads



Buckinghamia celsissima Ivory Curl Flower



Caesalpinia ferrea Leopard Tree



Corymbia citriodora Lemon Scented Gum



Corymbia maculata 'Gamai' Spotted Gum



Elaeocarpus eumundii Smooth-leaved Quandong



Eucalyptus robusta 'Matong' Swamp Mahogany

evergreen trees - local roads



Eucalyptus sideroxylon 'Rosea' Ironbark



Ficus rubiginosa Port Jackson Fig



Harpullia pendula Tulipwood



Lophostemon confertus Brushbox



Stenocarpus sinuatus Firewheel Tree

B	13/2/22	DA ISSUE
A	4/2/22	DA
REV	DATE	COMMENTS

PROJECT:
ReGrowth Kurri Kurri Landscape Design

SITE:
Cessnock Road, Gillieston Heights

CLIENT:
Loxford Project Management Pty Ltd

13808.5-REGGROWTH-landscape.vvwx 13/2/22

DRAWN: AL / PW DATE: 23.01.22 SCALE: @A3

JOB NUMBER: 13808.5 DA L003 B PHASE: DWG No: REV:

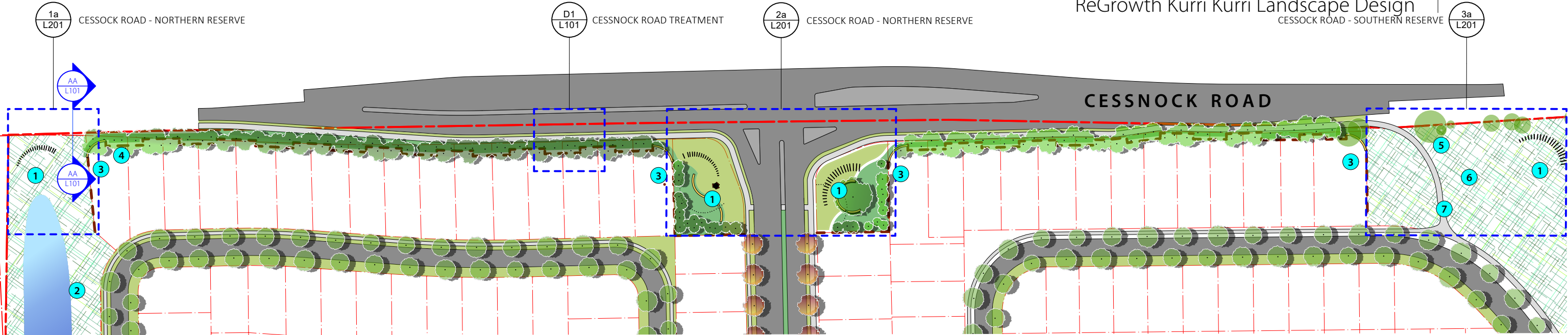


412 KING STREET NEWCASTLE NSW AUSTRALIA 2300
 TERRAS.COM.AU PH: 49 294 926 FAX: 49 263 069

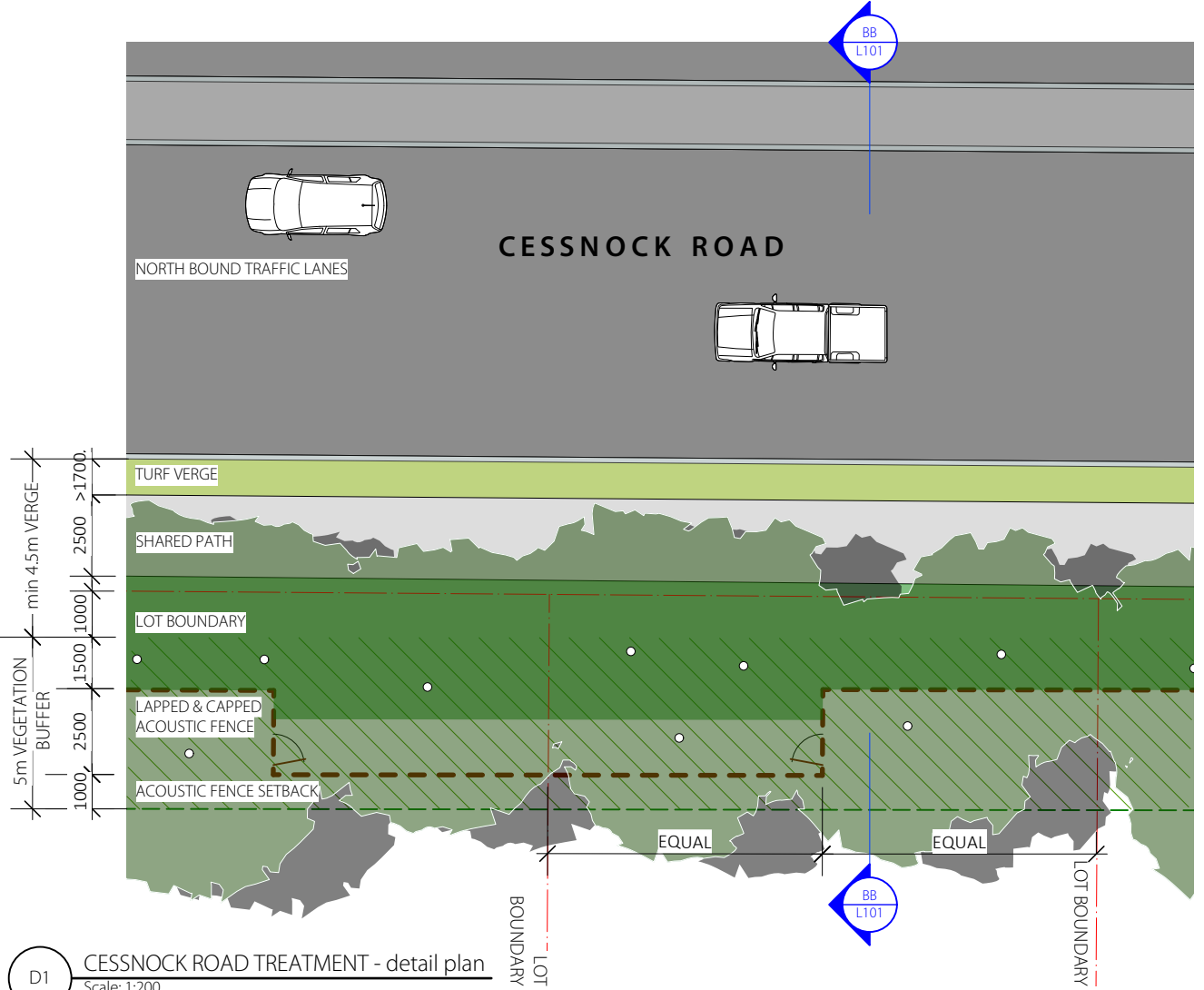
Cessnock Road Treatment | L101

ReGrowth Kurri Kurri Landscape Design

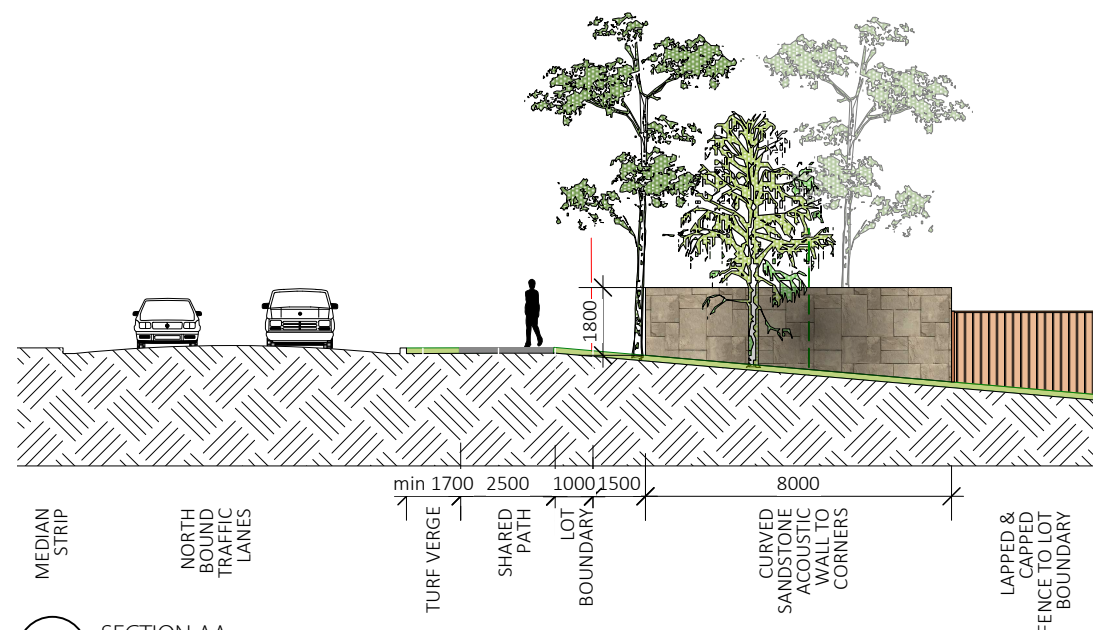
CESSNOCK ROAD - SOUTHERN RESERVE



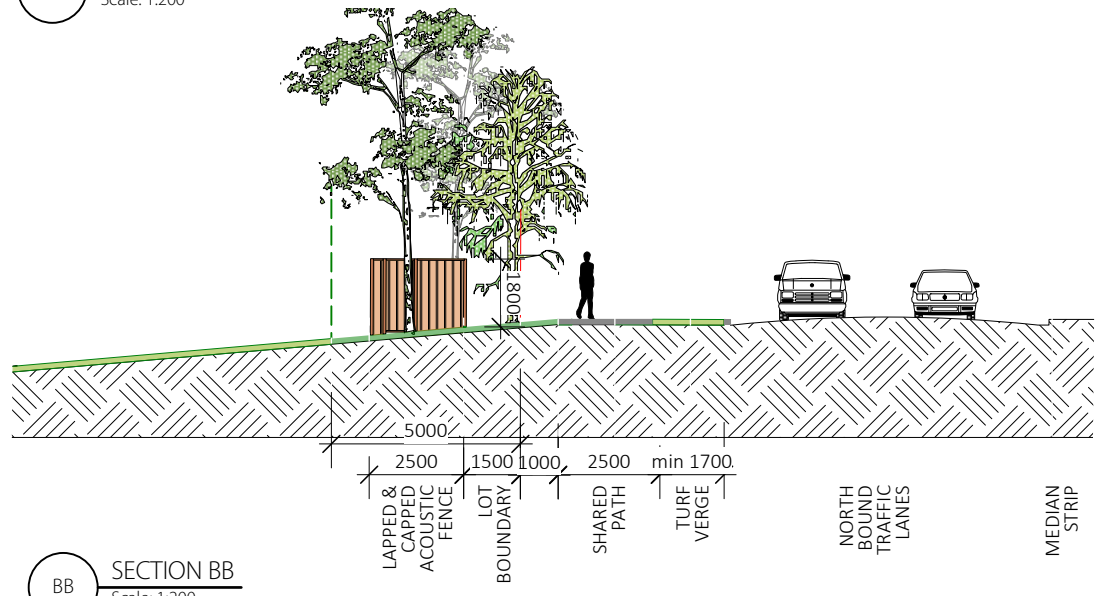
1 CESSNOCK ROAD TREATMENT
Scale: 1:1750



D1 CESSNOCK ROAD TREATMENT - detail plan
Scale: 1:200



AA SECTION AA
Scale: 1:200



BB SECTION BB
Scale: 1:200

Notes

- 1 Subdivision entry feature.
- 2 Northern drainage reserve with native planting and trees to comply with APZ requirements.
- 3 Curved sandstone acoustic wall to corners to contribute to placemaking.
- 4 Vegetation buffer with acoustic fence - refer to detail plan.
- 5 Existing trees to be retained.
- 6 Southern drainage reserve with native planting and trees to comply with APZ requirements.
- 7 Indicative shared path link.

Legend

- SITE BOUNDARY
- STAGE BOUNDARY
- LOT BOUNDARY
- TURF
- MASS PLANTING
- FOOTPATH
- ACOUSTIC FENCE
- DETENTION AREA
- DETENTION BASIN
- DECIDUOUS TREE
- EVERGREEN TREE

C 13/2/22 DA ISSUE
REV DATE COMMENTS

PROJECT:
ReGrowth Kurri Kurri Landscape Design

SITE:
Cessnock Road, Gillieston Heights

CLIENT:
Loxford Project Management Pty Ltd

13808.5-REGROWTH-landscape.vwx 13/2/22

DRAWN: AL / PW DATE: >> START DATE SCALE: @A3

JOB NUMBER: PHASE: DWG No: REV:
13808.5 DA L101 C



412 KING STREET NEWCASTLE NSW AUSTRALIA 2300
TERRAS.COM.AU PH: 49 294 926 FAX: 49 263 069

MC01 - Arterial Road Treatment

L102

ReGrowth Kurri Kurri Landscape Design



Notes

- 1 District playground, refer to detail plan.
- 2 Placemaking signage walls as continuation of entry feature.
- 3 Pedestrian refuge island.
- 4 Large feature tree and low planting to roundabout.
- 5 Street trees as per Subdivision Street Tree Masterplan - refer L002.
- 6 Native feature tree planting to median strip.
- 7 1.5m footpath.
- 8 2.5m shared path.

Legend

- SITE BOUNDARY
- STAGE BOUNDARY
- LOT BOUNDARY
- TURF
- MASS PLANTING
- FOOTPATH
- FEATURE WALL
- ACOUSTIC FENCE
- DECIDUOUS TREE
- EVERGREEN TREE

C 13/2/22 DA ISSUE
REV DATE COMMENTS

PROJECT:
ReGrowth Kurri Kurri Landscape Design

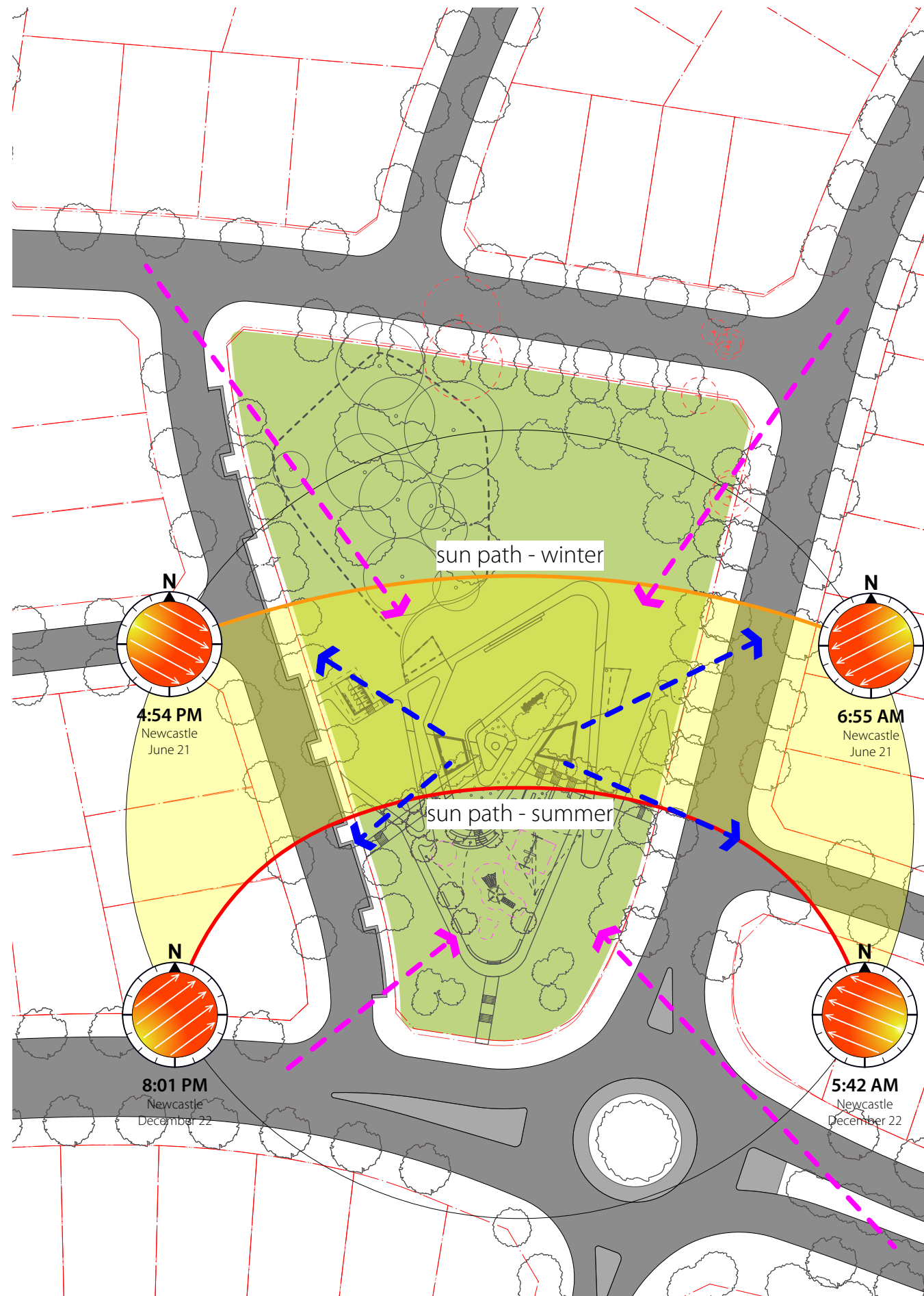
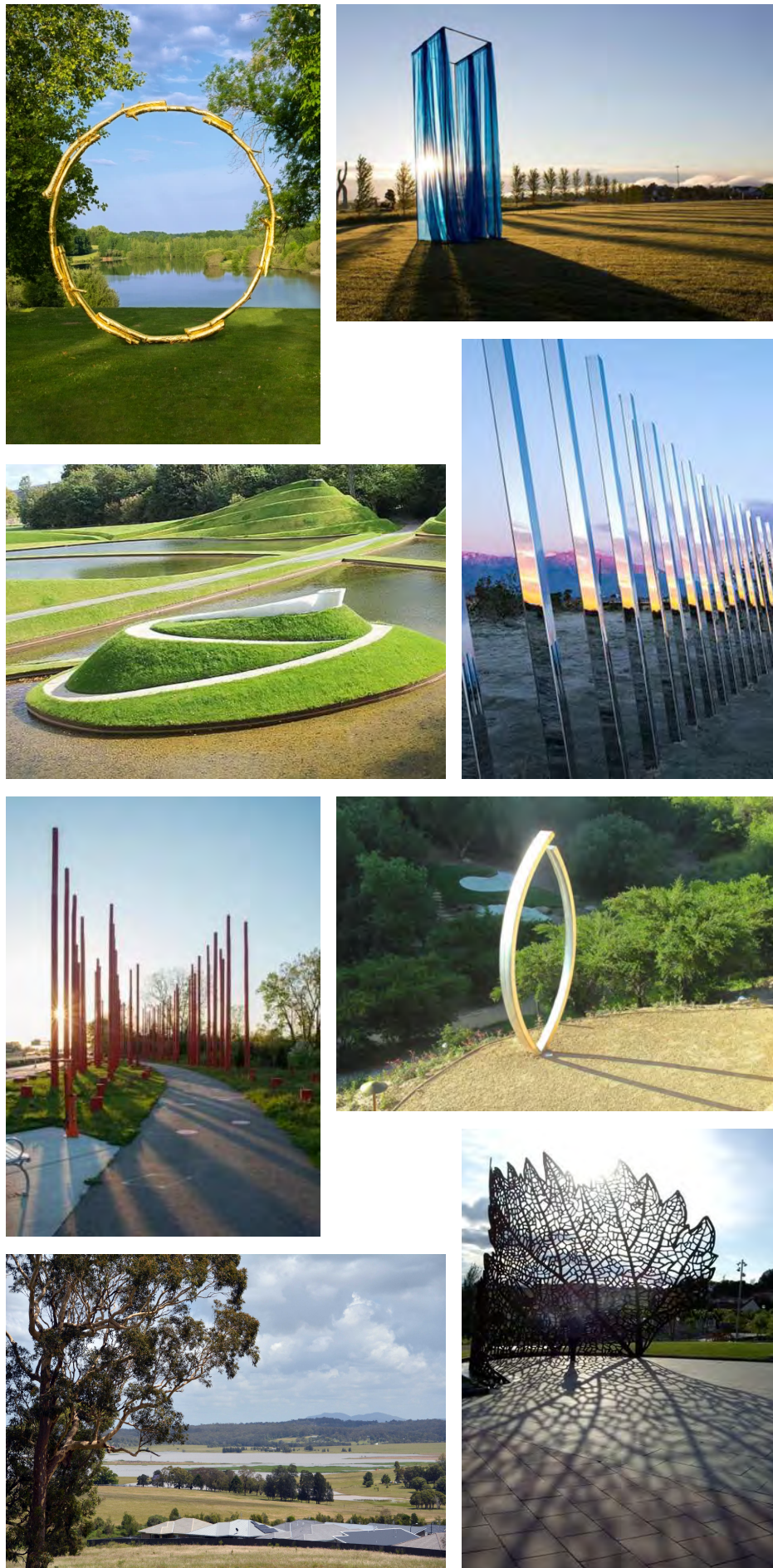
SITE:
Cessnock Road, Gillieston Heights

CLIENT:
Loxford Project Management Pty Ltd

13808.5-REGROWTH-landscape.vwx 13/2/22

DRAWN: AL / PW DATE: >> START DATE SCALE: @A3

JOB NUMBER: PHASE: DWG No: REV:
13808.5 DA L102 C



KEY PRINCIPLES

Sun + shadow

- Reference to sunrise + sunset
- Interactive sculptural + play elements
- Strong visual references
- Framed views in + out

ReGrowth

- Create revegetation zone
- Plant new endemic species
- Manage existing trees

Connection

- Views to broader landscape
- Accessible circulation paths
- Placemaking + wayfinding
- Strong visual landform + landmarks
- Social interaction

Engagement

- Interactive play elements
- Site specific placemaking
- Accessible + inviting
- Sculptural + music elements

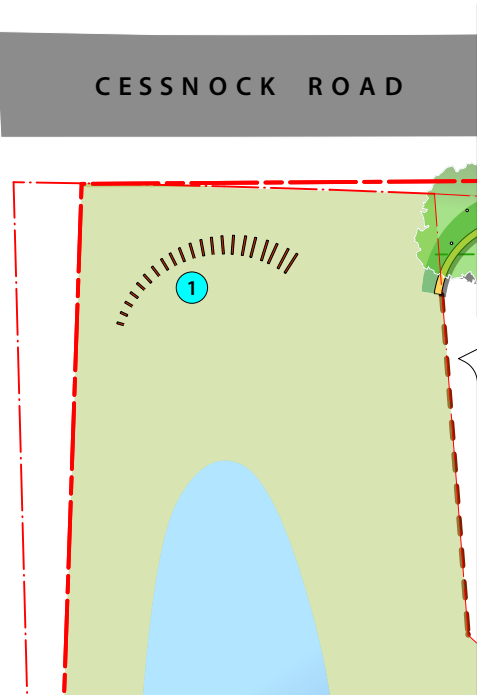
Comfort

- Shaded areas
- Cooling canopy cover
- Formal + informal seating + rest areas

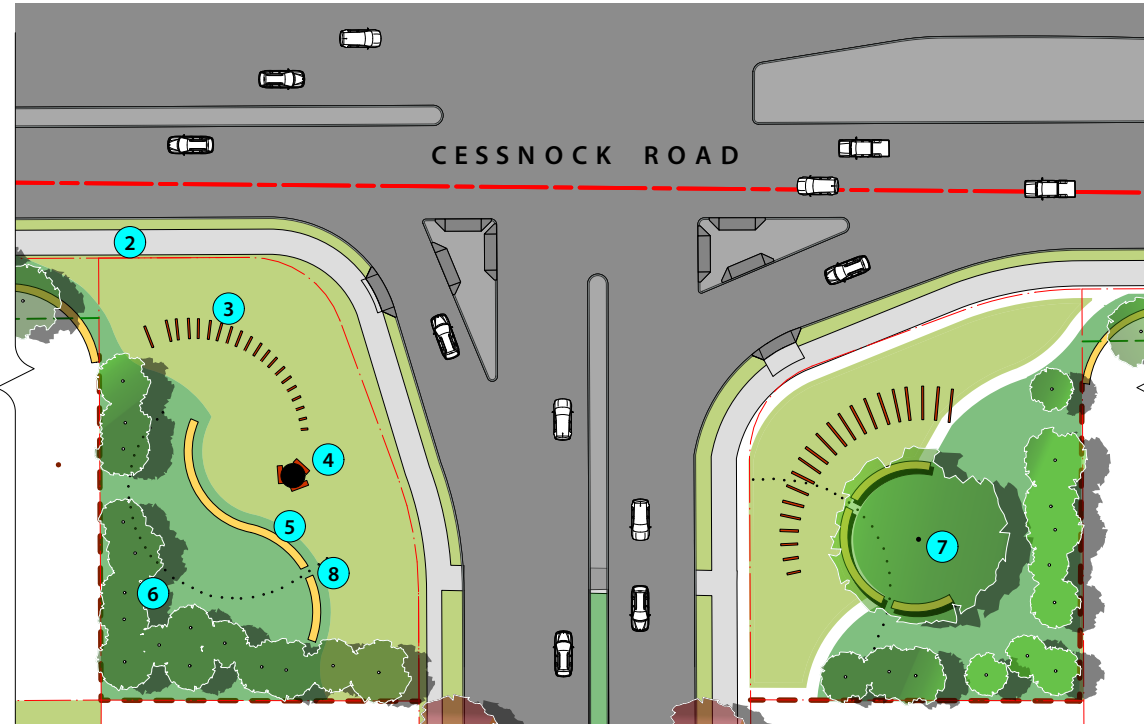
Cessnock Road Entry Feature - option a

ReGrowth Kurri Kurri Landscape Design

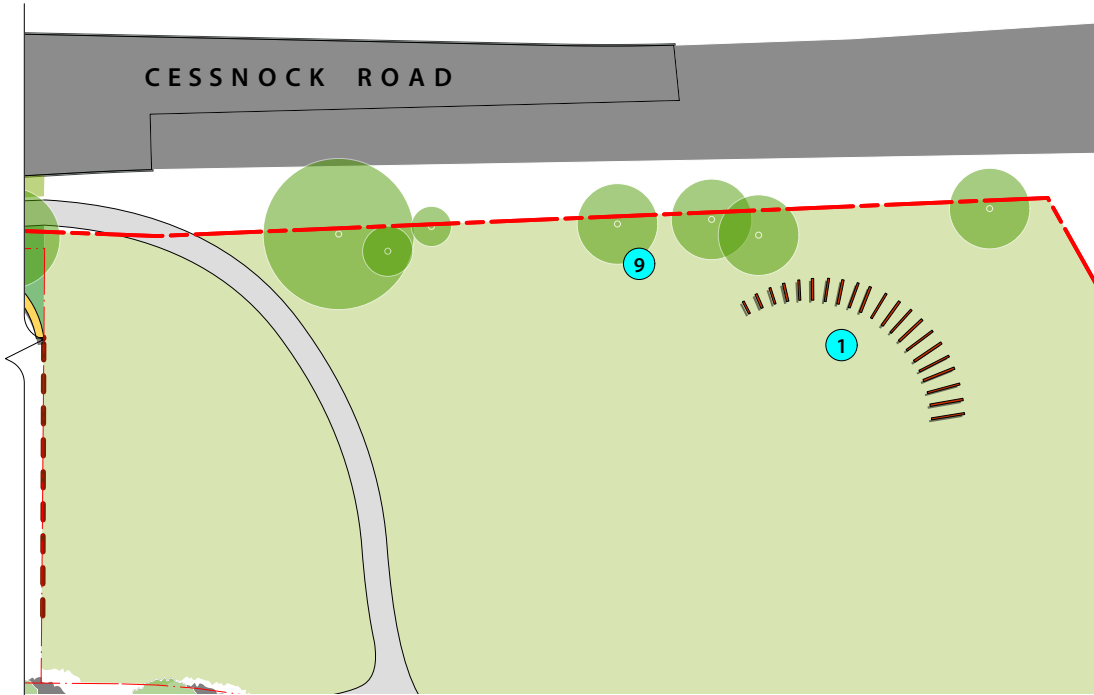
L201



1a CESSNOCK ROAD - NORTHERN RESERVE
Scale: 1:750



2a CESSNOCK ROAD - MAIN ENTRY
Scale: 1:750



3a CESSNOCK ROAD - SOUTHERN RESERVE
Scale: 1:750

Notes

- 1 Drainage reserve with native planting, and feature element / artwork to match main entry feature.
- 2 Shared path to connect with broader network.
- 3 Corten blades with uplighting.
- 4 Art element to provide prominent landmark.
- 5 Sandstone wall with subdivision signage.
- 6 Native trees and grasses to provide biodiversity and green backdrop / screening to adjoining lots.
- 7 Large Fig as feature tree.
- 8 Vertical poles to form arc around entry feature and relate to vertical elements throughout the site.
- 9 Existing trees to be retained.



4a CESSNOCK ROAD ENTRY FEATURE - RENDERS
Scale: 1:750

D 13/2/22 DA ISSUE
REV DATE COMMENTS

PROJECT:
ReGrowth Kurri Kurri Landscape Design

SITE:
Cessnock Road, Gillieston Heights

CLIENT:
Loxford Project Management Pty Ltd

13808.5-REGROWTH-landscape.vwx 13/2/22

DRAWN: AL / PW DATE: >> START DATE SCALE: @A3

JOB NUMBER: 13808.5 DA L201 D PHASE: DWG No: REV:

Playground - Site Plan | L301

ReGrowth Kurri Kurri Landscape Design



Notes

- 1 Picnic area to utilise existing shade trees, with serpentine sandstone wall to separate revegetation area
- 2 Circulation path with shade trees.
- 3 Subdivision entry walls to intersection.
- 4 Protected revegetation area. Existing trees to be managed during replacement planting.
- 5 Tall narrow trees to frame views in and out of site.
- 6 Kick around area with fence to roadside to contain balls (600m2).
- 7 Connection to road crossing and broader path network.
- 8 Accessible district playground - refer to detail plan.
- 9 Shade trees to path network.

Legend

- SITE BOUNDARY
- STAGE BOUNDARY
- LOT BOUNDARY
- TURF
- MASS PLANTING
- MULCH
- DECKING
- BRICK PAVING
- CONCRETE
- RUBBER
- SANDSTONE LOG
- BUBBLER
- STEPS
- TABLE
- BBQ
- FEATURE POSTS
- FALLZONE
- SHADE SAIL
- SCULPTURAL ELEMENT
- DECIDUOUS TREE
- EVERGREEN TREE

C 13/2/22 DA ISSUE
REV DATE COMMENTS

PROJECT:
ReGrowth Kurri Kurri Landscape Design

SITE:
Cessnock Road, Gillieston Heights

CLIENT:
Loxford Project Management Pty Ltd

13808.5-REGROWTH-landscape.vwx 13/2/22

DRAWN: AL / PW DATE: >> START DATE SCALE: @A3

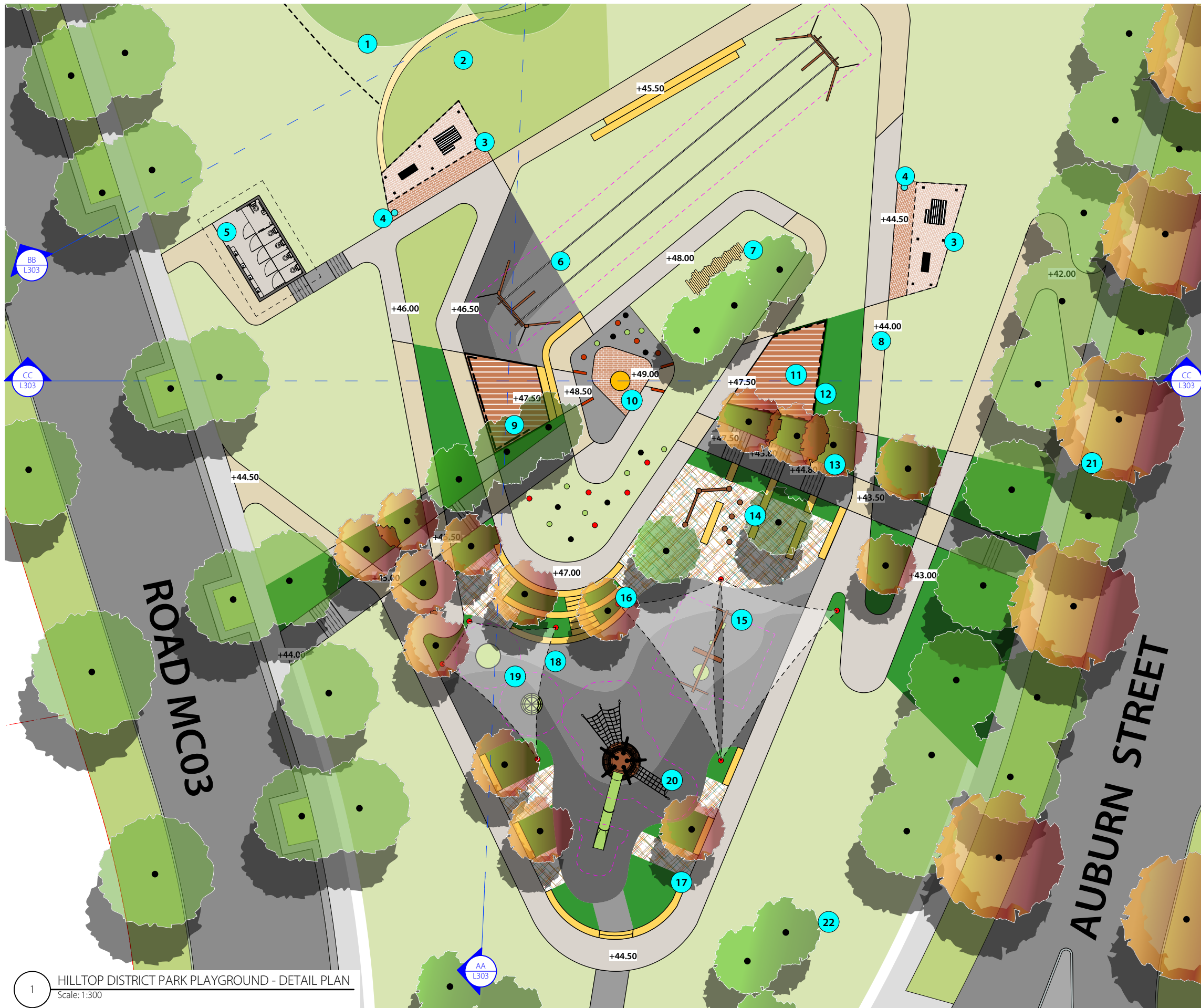
JOB NUMBER: PHASE: DWG No: REV:
13808.5 DA L301 C

1 HILLTOP DISTRICT PARK PLAYGROUND
Scale: 1:1000

Playground - Detail Plan

L302

ReGrowth Kurri Kurri Landscape Design



Notes

- 1 Protected revegetation area. Existing trees to be managed during replacement planting.
- 2 Picnic area to utilise existing shade trees, with serpentine sandstone wall to separate revegetation area
- 3 BBQ shelter.
- 4 Bubbler.
- 5 Accessible toilets.
- 6 Accessible flying fox.
- 7 Interactive sculptural element for informal play.
- 8 Contrasting paths to assist with way-finding and mass planting aligned with sun paths.
- 9 Viewing deck with seating, aligned to sunset.
- 10 Focal point at highest part of the park to feature interactive vertical elements including soft chimes, tall clear trunked trees, sculpture, and patterning to highlight sun path and shadow play.
- 11 Viewing deck with seating, aligned to sunrise.
- 12 Feature placemaking wall of recycled bricks.
- 13 Access stairs softened with mass planting.
- 14 Terraced sandstone walls with mass planting and natural play elements.
- 15 Bank of swings including inclusive basket swing.
- 16 Terraced sandstone walls for informal play and seating.
- 17 Informal sitting walls for observation and balancing.
- 18 Shade sails to provide additional cover, designed to be strong visual element for views into the park.
- 19 Inclusive spinning and balancing equipment.
- 20 Playground with tall narrow tower, strong visual slide and climbing challenges.
- 21 Circulation path with shade trees.
- 22 Tall narrow trees to frame views in and out of site.

Legend

- SITE BOUNDARY
- STAGE BOUNDARY
- LOT BOUNDARY
- TURF
- MASS PLANTING
- MULCH
- DECKING
- BRICK PAVING
- CONCRETE
- RUBBER
- SANDSTONE LOG
- BUBBLER
- STEPS
- TABLE
- BBQ
- FEATURE POSTS
- FALLZONE
- SHADE SAIL
- SCULPTURAL ELEMENT
- DECIDUOUS TREE
- EVERGREEN TREE

C 13/2/22 DA ISSUE
REV DATE COMMENTS

PROJECT:
ReGrowth Kurri Kurri Landscape Design

SITE:
Cessnock Road, Gillieston Heights

CLIENT:
Loxford Project Management Pty Ltd

13808.5-REGROWTH-landscape.vwx 13/2/22

DRAWN: AL / PW DATE: >> START DATE SCALE: @A3

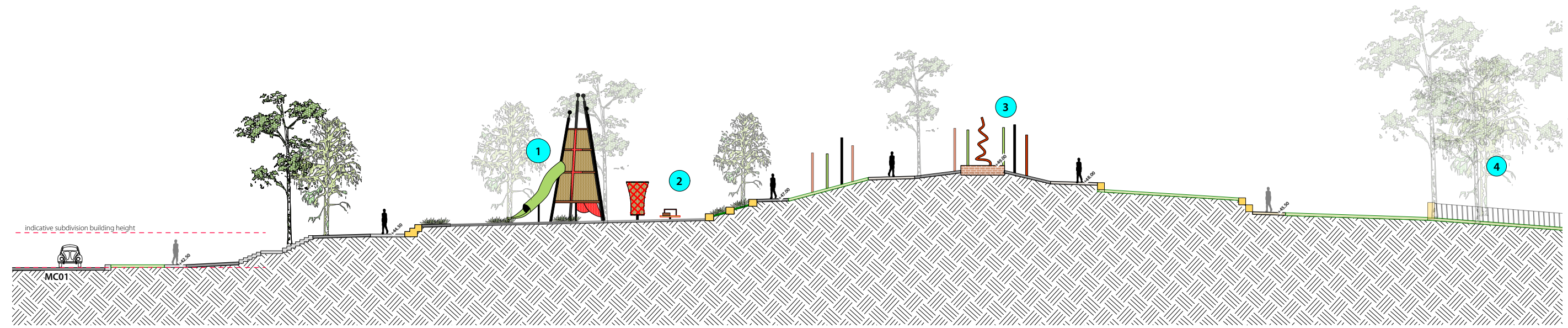
JOB NUMBER: PHASE: DWG No: REV:
13808.5 DA L302 C

Playground - Sections | L303

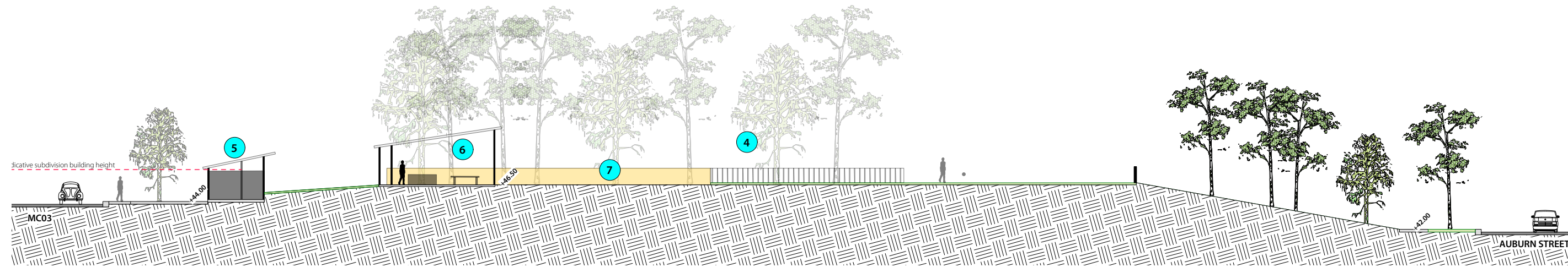
ReGrowth Kurri Kurri Landscape Design

Notes

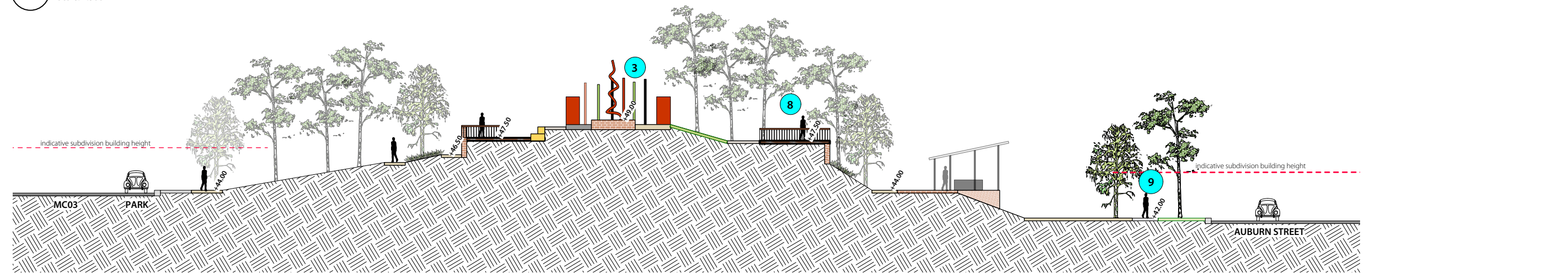
- 1 Playground with tall narrow tower, strong visual slide and climbing challenges.
- 2 Inclusive spinning and balancing equipment.
- 3 Focal point at highest part of the park to feature interactive vertical elements including soft chimes, tall clear trunked trees, sculpture, and patterning to highlight sun path and shadow play.
- 4 Protected revegetation area. Existing trees to be managed during replacement planting.
- 5 Accessible toilets.
- 6 BBQ shelter.
- 7 Picnic area to utilise existing shade trees, with serpentine sandstone wall to separate revegetation area
- 8 Viewing deck with seating.
- 9 Circulation path with shade trees.



AA PLAYGROUND - SECTION AA
Scale: 1:300



BB PLAYGROUND SECTION BB
Scale: 1:300



CC PLAYGROUND - SECTION CC
Scale: 1:300

REV	DATE	DA ISSUE	COMMENTS
C	13/2/22	DA ISSUE	

PROJECT:
ReGrowth Kurri Kurri Landscape Design

SITE:
Cessnock Road, Gillieston Heights

CLIENT:
Loxford Project Management Pty Ltd

13808.5-REGROWTH-landscape.vwx 13/2/22

DRAWN: AL / PW DATE: >> START DATE SCALE: @A3

JOB NUMBER: PHASE: DWG No: REV:
13808.5 DA L303 C



412 KING STREET NEWCASTLE NSW AUSTRALIA 2300
TERRAS.COM.AU PH: 49 294 926 FAX: 49 263 069