

# Landscape Development Application

Lochinvar Estate - Stages 8 - 15

**site:**

Lots 1 & 2 DP 718712,  
Lots 310 & 311 DP 1034974  
Lots 32 DP 1132263

**client:**

Urban Land & Housing Group Pty Ltd

**council:**

Maitland City Council

**proposal:**

DA

**project no:**

11751.5

**drawn:**

yy / km

**date:**

27.05.2022

**revision:**

k



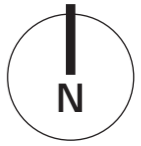
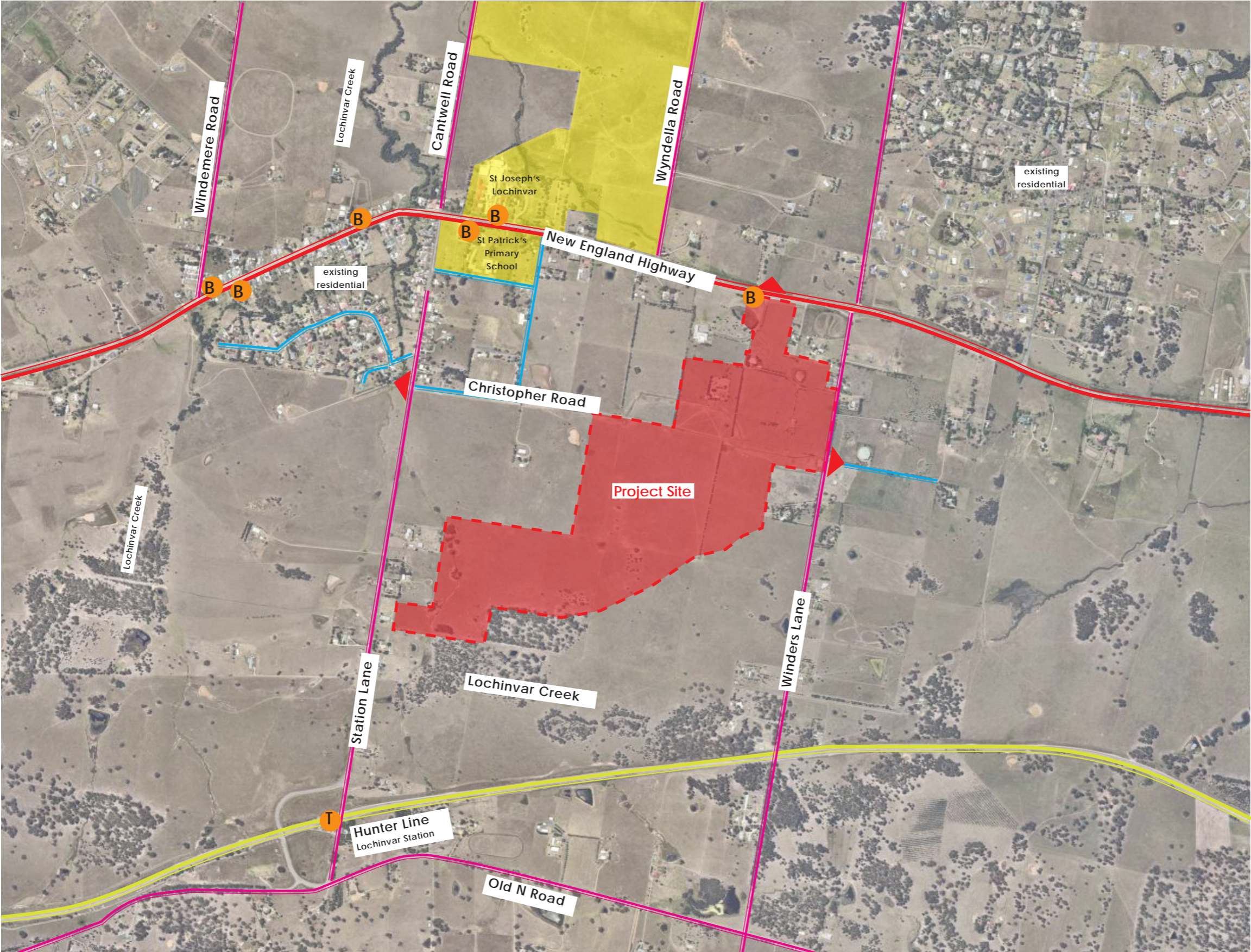


# site analysis

## Lochinvar Estate - Stages 8 - 15

01

May 2022



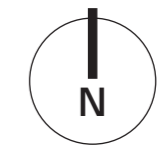
- legend**
- - - site boundary
  - train line
  - major road
  - minor road
  - local road
  - education/school
  - project site
  - ▲ existing access point to site
  - T train stop
  - B bus stop

**site details:**  
 Lots 1&2 DP 718712,  
 Lots 310&311 DP 1034974  
 Lots 32 DP 1132263  
**client:**  
 Urban Land & Housing  
 Group Pty Ltd  
**date:**  
 27.05.2022  
**job number:**  
 11751.5  
**scale:**  
 NTS @ A3  
**drawn:**  
 yy / km  
**revision:**  
 k





## Lochinvar Estate - Stages 8 - 15



### legend

- Street tree  
*Pyrus 'Chanticleer'*
- Street tree  
*Pistacia chinensis*
- Street tree  
*Tristanopsis laurina*
- Street tree  
*Elaeocarpus eumundii*
- Street tree  
*Magnolia grandiflora*  
'Little Gem'
- Street tree  
*Waterhousia floribunda*  
'Sweeper'
- Median tree  
*Pyrus 'Capital'*
- - - Site boundary

**site details:**  
 Lots 1&2 DP 718712,  
 Lots 310&311 DP 1034974  
 Lots 32 DP 1132263  
**client:**  
 Urban Land & Housing  
 Group Pty Ltd  
**date:**  
 27.05.2022  
**job number:**  
 11751.5  
**scale:**  
 approx 1:6000 @ A3  
**drawn:**  
 yy / km  
**revision:**  
 k

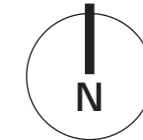
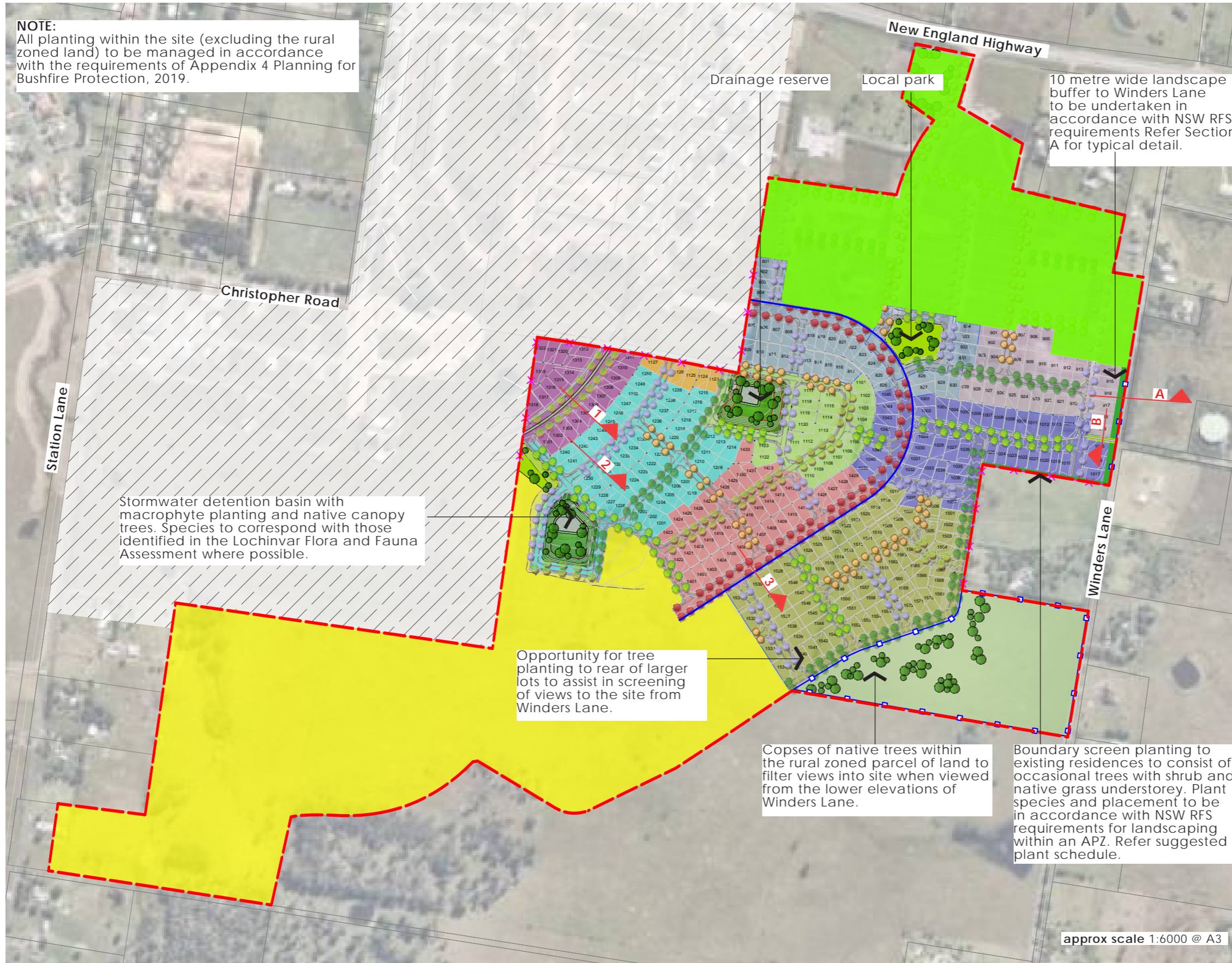


# masterplan

## Lochinvar Estate

# 03

May 2022



### legend

- Street tree *Pyrus 'Chanticleer'*
- Street tree *Pistacia chinensis*
- Street tree *Tristaniopsis laurina*
- Street tree *Elaeocarpus eumundii*
- Street tree *Magnolia grandiflora 'Little Gem'*
- Street tree *Waterhousia floribunda 'Sweeper'*
- Park tree
- Screen planting
- Stages 1 - 7 (approved)
- Stage 8
- Stage 9
- Stage 10
- Stage 11A
- Stage 11B
- Stage 12
- Stage 13
- Stage 14
- Stage 15
- Future Stages 16-20
- Adjoining residential development
- Post and Rail Fence
- 1800 high Colorbond Fence
- Potential cycleway
- Site boundary



# landscape buffer zone

## Lochinvar Estate - Stages 8 - 15

04

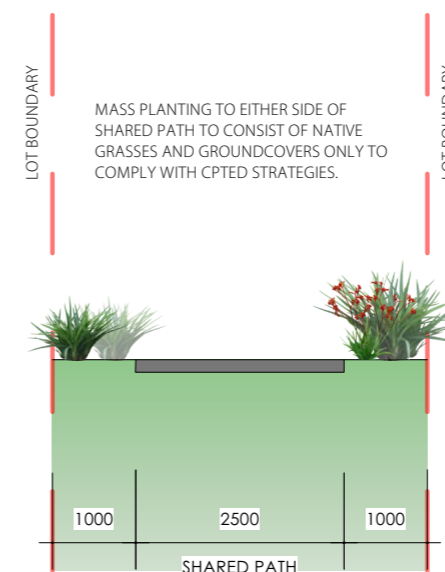
May 2022



SECTION A - WINDERS LANE LANDSCAPE INTERFACE



Timber post and rail boundary fence



SECTION B

**site details:**  
 Lots 1&2 DP 718712,  
 Lots 310&311 DP 1034974  
 Lots 32 DP 1132263  
**client:**  
 Urban Land & Housing  
 Group Pty Ltd  
**date:**  
 27.05.2022  
**job number:**  
 11751.5  
**scale:**  
 @ A3  
**drawn:**  
 yy / km  
**revision:**  
 k

  
**terras**  
 landscape architects  
 412 king street newcastle nsw2300  
 ph:49 294 926  
 fax: 49 263 069  
 www.terras.com.au

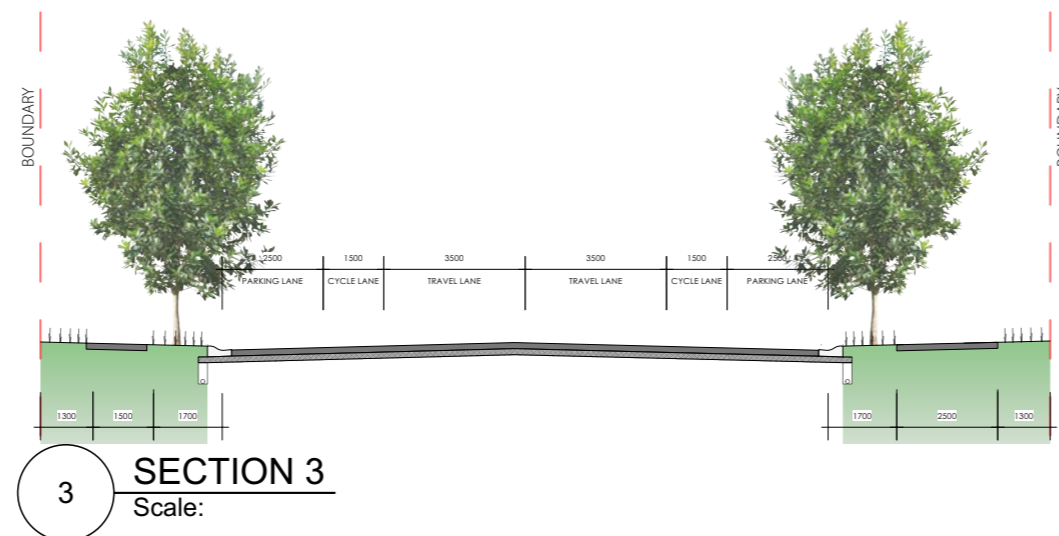
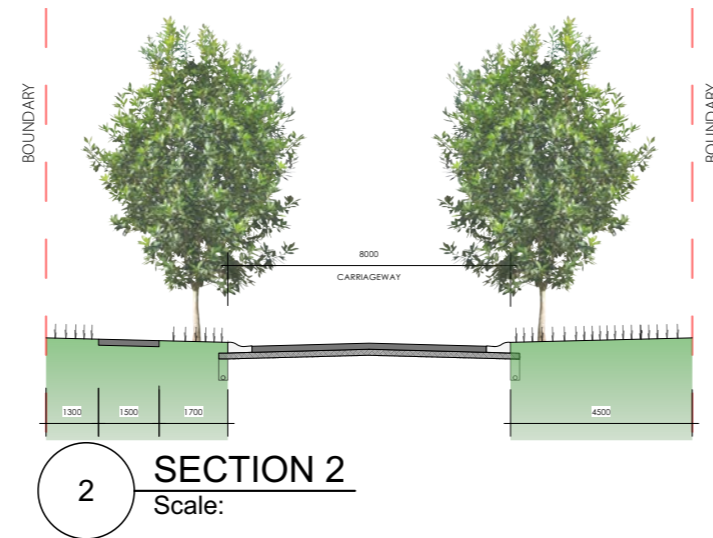
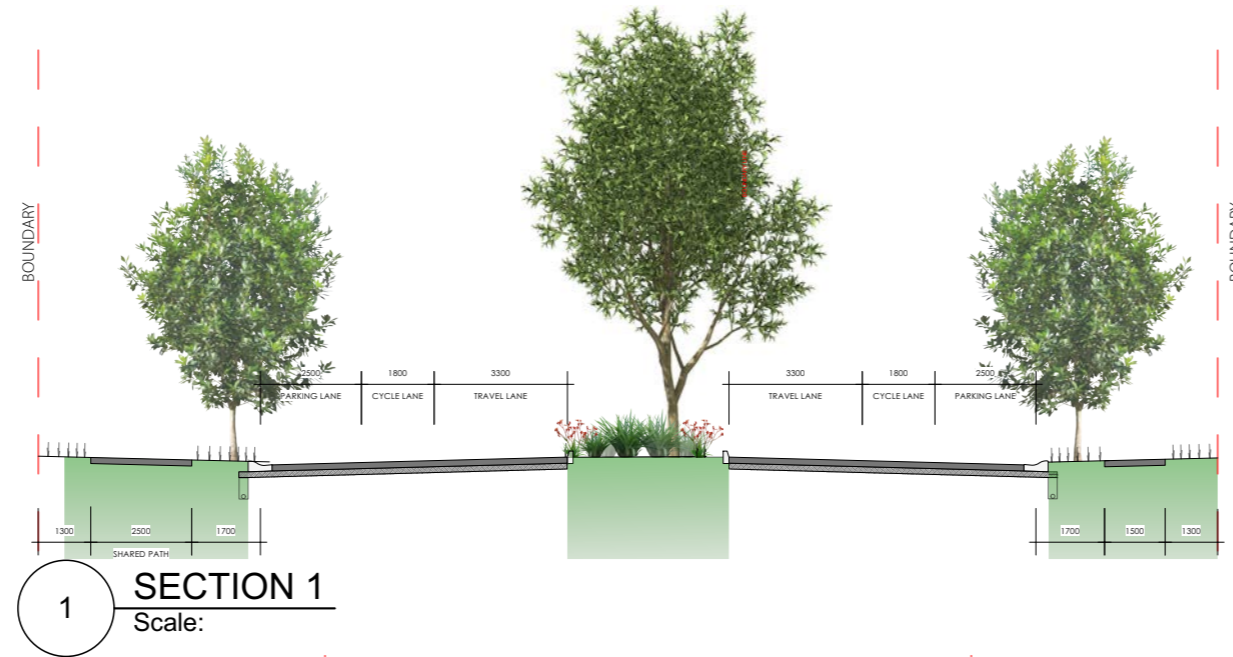


# typical road sections

## Lochinvar Estate - Stages 8 - 15

05

May 2022



**site details:**  
Lots 1&2 DP 718712,  
Lots 310&311 DP 1034974  
Lots 32 DP 1132263  
**client:**  
Urban Land & Housing  
Group Pty Ltd  
**date:**  
27.05.2022  
**job number:**  
11751.5  
**scale:**

**drawn:**  
yy / km  
**revision:**  
k

  
**terras**  
landscape architects  
412 king street newcastle nsw2300  
ph: 49 294 926  
fax: 49 263 069  
www.terras.com.au



# plant palette

## Lochinvar Estate - Stages 8 - 15

06

May 2022

**SUGGESTED PLANT SCHEDULE – STREET TREES**

BOTANICAL NAME	COMMON NAME	POT SIZE
<b>TREES</b>		
Elaeocarpus eumundii *	Quandong	100 Litre
Magnolia 'Little Gem' *	Dwarf Evergreen Magnolia	100 Litre
Pistachia chinenses	ChinesePistachio	100 Litre
Pyrus 'Chanticleer'	Chanticleer	100 Litre
Pyrus 'Capital'	Capital	100 Litre
Tristaniopsis laurina *	Water Gum	100 Litre
Waterhousia 'Sweeper' *	Sweeper	100 Litre



Allocasuarina torulosa.



Corymbia maculata.



Melaleuca styphelioides.



Elaeocarpus eumundii



Magnolia 'Little Gem'



Tristaniopsis laurina



Waterhousia 'Sweeper'

**site details:**  
 Lots 1&2 DP 718712,  
 Lots 310&311 DP 1034974  
 Lots 32 DP 1132263  
**client:**  
 Urban Land & Housing  
 Group Pty Ltd  
**date:**  
 27.05.2022  
**job number:**  
 11751.5  
**scale:**  
 @ A3  
**drawn:**  
 yy / km  
**revision:**  
 k



# plant palette

## Lochinvar Estate - Stages 8 - 15

# 07

May 2022

### SUGGESTED PLANT SCHEDULE – LANDSCAPE BUFFER ZONE

**NOTE:** Most plant species sourced from those occurring on site and characteristic of the remnant vegetation communities present, as identified in the Flora and Fauna Assessment (ecobiological, 2009). Other species selected for their demonstrated hardiness, screening ability and suitability for planting with a Bushfire Asset Protection Zone.

BOTANICAL NAME	COMMON NAME	POT SIZE
<b>TREES</b>		
<i>Allocasuarina torulosa</i>	Forest Oak	25 Litre
<i>Corymbia maculata</i>	Spotted Gum	25 Litre
<i>Eucalyptus crebra</i>	Narrow Leafed Ironbark	25 Litre
<i>Eucalyptus molucana</i>	Grey Box	25 Litre
<i>Eucalyptus tereticornis</i>	Forest Red Gum Bracelet	25 Litre
<i>Melaleuca armillaris</i>	Honey Myrtle Prickly	25 Litre
<i>Melaleuca styphelioides</i>	Leafed Tea Tree	25 Litre
<i>Tristanopsis laurina</i>	Water Gum	25 Litre
<b>SHRUBS</b>		
<i>Acacia falcata</i>	Sickle Wattle	2.5 Litre
<i>Acacia longifolia</i>	Sydney Golden Wattle	5 Litre
<i>Acacia parvipinnula</i>	Silver Stem Wattle	2.5 Litre
<i>Banksia aemula</i>	Banksia	5 Litre
<i>Banksia spinulosa</i>	Hairpin Banksia	5 Litre
<i>Breynia oblongifolia</i>	Coffee Bush	2.5 Litre
<i>Bursaria spinosa</i>	Sweet Bursaria	2.5 Litre
<i>Callistemon salignus</i>	White Bottlebrush Gorse	5 Litre
<i>Davesia ulicifolia</i>	Bitter Pea	2.5 Litre
<i>Grevillea .cvs</i>	Grevillea	5 Litre
<i>Hakea sericea</i>	Needle Bush	5 Litre
<i>Indigofera australia</i>	Australian Indigo	2.5 Litre
<i>Persoonia levis</i>	Broad Leafed Geebung	5 Litre
<i>Pultenaea spinosa</i>	Spiny Bush Pea	2.5 Litre
<i>Syzygium .cvs</i>	Lilly Pilly	25 Litre
<b>GRASSES AND GROUNDCOVERS</b>		
<i>Dianella revoluta var. revoluta</i>	Flax Lily	50mm Tube
<i>Lomandra multiflora ssp. multiflora</i>	Mat Rush	50mm Tube
<i>Hardenbergia violacea</i>	Purple Twining Pea	50mm Tube
<i>Poa labillardieri</i>	Tussock Grass	50mm Tube
<i>Pomax umbellata</i>	Pomax	50mm Tube
<i>Themeda australis</i>	Kangaroo Grass	50mm Tube

### SUGGESTED PLANT SCHEDULE – DETENTION BASINS

**NOTE:** Most plant species sourced from those occurring on site and characteristic of the remnant vegetation communities present, as identified in the Flora and Fauna Assessment (ecobiological, 2009).

BOTANICAL NAME	COMMON NAME	POT SIZE
<b>TREES</b>		
<i>Allocasuarina torulosa</i>	Forest Oak	25 Litre
<i>Melaleuca styphelioides</i>	Prickly Leafed Tea Tree	25 Litre
<i>Tristanopsis laurina</i>	Water Gum	25 Litre
<b>GRASSES AND GROUNDCOVERS</b>		
<i>Baumea articulata</i>	Jointed Twig-Rush	50mm Tube
<i>Bolboscoenus caldwellii</i>	Club Rush	50mm Tube
<i>Carex appressa</i>	Tall Sedge	50mm Tube
<i>Dianella revoluta var. revoluta</i>	Flax Lily	50mm Tube
<i>Lomandra multiflora ssp. multiflora</i>	Mat Rush	50mm Tube
<i>Ficinia nodosa</i>	Knobby Club-Rush	50mm Tube
<i>Imperata cylindrica</i>	Blady Grass	50mm Tube
<i>Hardenbergia violacea</i>	Purple Twining Pea	50mm Tube
<i>Poa labillardieri</i>	Tussock Grass	50mm Tube
<i>Pomax umbellata</i>	Pomax	50mm Tube
<i>Themeda australis</i>	Kangaroo Grass	50mm Tube

**site details:**  
 Lots 1&2 DP 718712,  
 Lots 310&311 DP 1034974  
 Lots 32 DP 1132263  
**client:**  
 Urban Land & Housing  
 Group Pty Ltd  
**date:**  
 27.05.2022  
**job number:**  
 11751.5  
**scale:**  
 @ A3  
**drawn:**  
 yy / km  
**revision:**  
 k