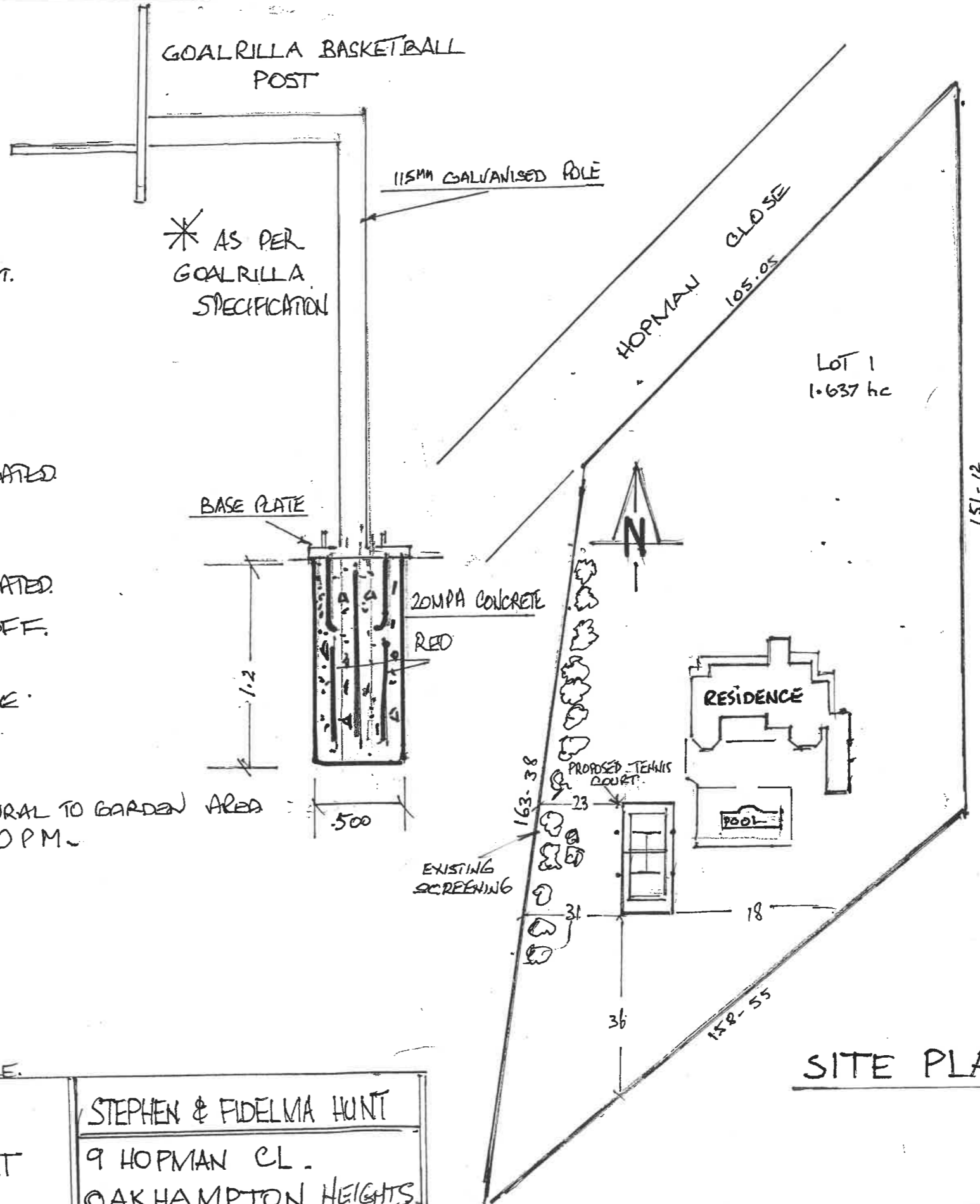


SPECIFICATIONS

- SKIM PROPOSED AREA 33MT X 16MT
- 1% FALL
- FORM UP AREA 33MT X 16MT.
- 30MM SAND OVER AREA
- PLACE F72 MESH OVER 33MT X 16MT.
- CONCRETE TO BE 32MPA
- CONCRETE TO BE 120MM THICK
- 30MM DEEP SAW CUTS
- 80NB CORNER POST POWDER COATED
- 40NB INTERMEDIATE POST POWDER COATED
- 32NB TOP RAIL - POWDER COATED.
- 3MT. HIGH BLACK PVC CHAINMESH.
- 6.5MT HIGH 80NB LIGHT POLES - POWDER COATED.
- 4/ LED LIGHTS. - SHARP CUT-OFF.
- BLACK REMOVABLE NET POST.
- SYNPAVE ACRYLIC SPORTS SURFACE.
- BASKETBALL 'GOALRILLA'
- SHRUBS SCREENING IN PLACE
- WATER FLOW FROM TENNIS COURTS - NATURAL TO GARDEN AREA
- LIGHTS WILL NOT BE USED AFTER 10 P.M.



* NOT TO SCALE.

MAJOR SPORTS SURFACES
BLN-72128C

PROPOSED TENNIS COURT FOR ---

STEPHEN & FIDELMA HUNT
9 HOPMAN CL.
OAKHAMPTON HEIGHTS

SITE PLAN