



LEGEND

- SITE CADASTRAL BOUNDARY
- - - PROPOSED DEVELOPMENT APPLICATION
- EXISTING BOUNDARY
- FUTURE BOUNDARY (APPROVED)
- - - PROPOSED BOUNDARY

drawing title:
EXISTING SITE NATURAL SURFACE PLAN

location: CHISHOLM

council: MAITLAND CITY COUNCIL

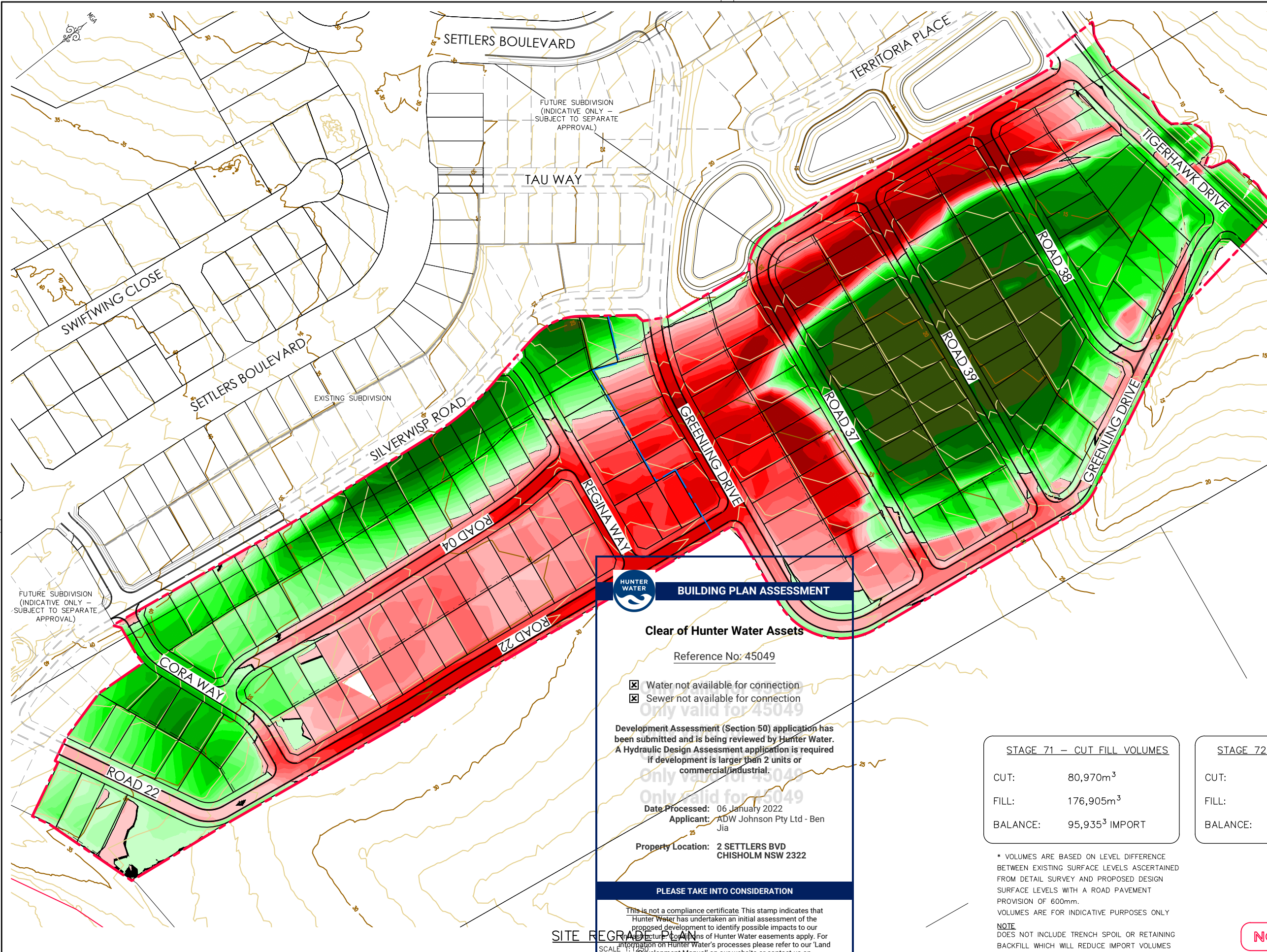
dwg ref: 190433(71-72)-DA-104

client:

central coast office ph: (02) 4305 4300
 hunter office ph: (02) 4978 5100
 sydney office ph: (02) 8046 7411

www.adwjohanson.com.au

ver.	date	comment	drawn	pm	level information	scale (A1 original size)	notes
A	08.12.21	INITIAL ISSUE	MF	MK	DATUM: AHD CONTOUR INTERVAL: 1.0m		NOTE: PLANS ARE PREPARED IN COLOUR



LEGEND

- LIMIT OF WORKS
- STAGE BOUNDARY
- PROPOSED LOT BOUNDARY
- EXISTING LOT BOUNDARY
- FUTURE LOT BOUNDARY
- MAJOR CONTOURS
- MINOR CONTOURS
- EXTENTS OF BATTER

CONTOUR INTERVAL = 1.0m

LEGEND (+ FILL - CUT)		Colour
Lower_value	Upper_value	
-3	to -2.5 m	
-2.5	to -2 m	
-2	to -1.75 m	
-1.75	to -1.5 m	
-1.5	to -1.25 m	
-1.25	to -1 m	
-1	to -0.75 m	
-0.75	to -0.5 m	
-0.5	to -0.25 m	
-0.25	to -0.01 m	
-0.01	to 0.01 m	
0.01	to 0.250 m	
0.250	to 0.5 m	
0.500	to 0.75 m	
0.75	to 1 m	
1	to 1.25 m	
1.25	to 1.5 m	
1.5	to 1.75 m	
1.75	to 2 m	
2	to 2.5 m	
2.5	to 3 m	
3	to 3.5 m	
3.5	to 4 m	
4	to 5.5 m	

HUNTER WATER

BUILDING PLAN ASSESSMENT

Clear of Hunter Water Assets

Reference No: 45049

Water not available for connection

Sewer not available for connection

Only valid for 45049

Development Assessment (Section 50) application has been submitted and is being reviewed by Hunter Water. A Hydraulic Design Assessment application is required if development is larger than 2 units or commercial/industrial.

Only valid for 45049

Only valid for 45049

Date Processed: 06 January 2022
Applicant: ADW Johnson Pty Ltd - Ben Jia

Property Location: 2 SETTLERS BVD
CHISHOLM NSW 2322

PLEASE TAKE INTO CONSIDERATION

This is not a compliance certificate. This stamp indicates that Hunter Water has undertaken an initial assessment of the proposed development to identify possible impacts to our infrastructure. Conditions of Hunter Water easements apply. For information on Hunter Water's processes please refer to our 'Land Development Manual' on our website or contact us on 1300 657 657, Version 3.3 (22 Dec 2021)

STAGE 71 - CUT FILL VOLUMES

CUT:	80,970m ³
FILL:	176,905m ³
BALANCE:	95,935 ³ IMPORT

STAGE 72 - CUT FILL VOLUMES

CUT:	42,370m ³
FILL:	55,575m ³
BALANCE:	13,205 ³ IMPORT

* VOLUMES ARE BASED ON LEVEL DIFFERENCE BETWEEN EXISTING SURFACE LEVELS ASCERTAINED FROM DETAIL SURVEY AND PROPOSED DESIGN SURFACE LEVELS WITH A ROAD PAVEMENT PROVISION OF 600mm.
VOLUMES ARE FOR INDICATIVE PURPOSES ONLY

NOTE
DOES NOT INCLUDE TRENCH SPOIL OR RETAINING BACKFILL WHICH WILL REDUCE IMPORT VOLUMES



NOT FOR CONSTRUCTION

REV.	DATE	AMENDMENT	DESIGN L.D.	DRAWN C.R.	CHECKED M.L.	APPROVED M.L.	SCALES
A	20.12.2021	PRELIMINARY ISSUE					A1 1:1250

DESIGN FILE S:\190433\DESIGN\12\CSR\CSR CONCEPT ENG.project
Plotted By: Steven Zammit Plot Date: 20/12/21 11:34:12AM Cad File: S:\190433\DRAWINGS\GENERAL\SKETCHES\190433-SK-283-A.DWG

1300 657 657, Version 3.3 (22 Dec 2021)
5 Pioneer Avenue
P.O. Box 3717,
Tuggerah N.S.W. 2259
Phone: (02) 4305 4300
Fax: (02) 4305 4399
email: coast@adwjohnson.com.au
www.adwjohnson.com.au
ABN 62 129 445 398

PROPERTY DESCRIPTION		PROJECT	
LOT 5200 IN D.P.1247841 SETTLERS BOULEVARD, CHISHOLM		PROPOSED SUBDIVISION	
SURVEYED		PLAN TITLE	
ADW Johnson		STAGES 71 & 72 SITE REGRADE PLAN	
DATUM		PROJECT No.	
GDA94 M.G.A. ZONE 56 A.H.D.		190433	
DISCIPLINE		NUMBER	
- SK		- 283	
REV.		REV.	
- A		- A	