

DIAL BEFORE YOU DIG SERVICES ENQUIRY INDICATE AUSGRID ELECTRICAL CABLES ARE PRESENT IN THIS AREA

DIAL BEFORE YOU DIG SERVICES ENQUIRY INDICATE JEMENA GAS MAINS ARE PRESENT IN THIS AREA

LOCATION OF WATERMAIN HAS BEEN DETERMINED FROM HUNTER WATER CORPORATION DIAL BEFORE YOU DIG SERVICES PLAN AND SURVEYED HYDRANT LOCATIONS

LOCATION OF SEWERMAIN HAS BEEN DETERMINED FROM HUNTER WATER CORPORATION DIAL BEFORE YOU DIG SERVICES PLAN

ALL EXISTING STRUCTURES TO BE REMOVED, CLEAN COMPACTED FILL TO SUB GROUND VOIDS

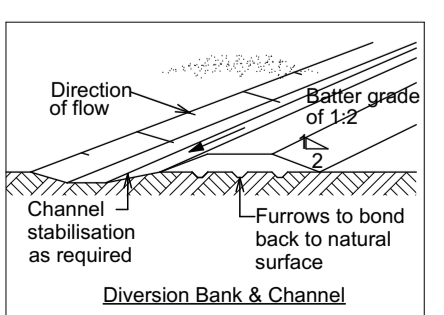
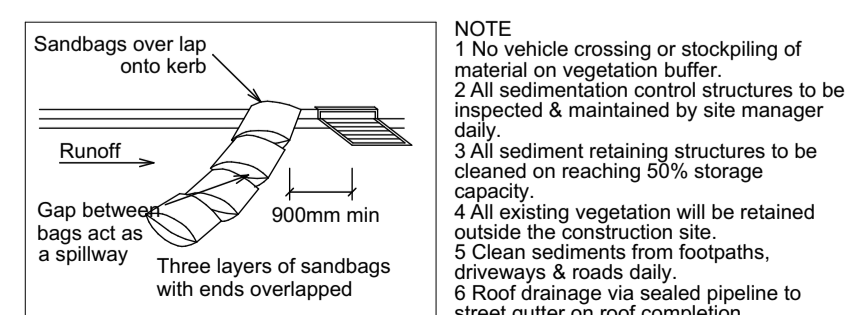
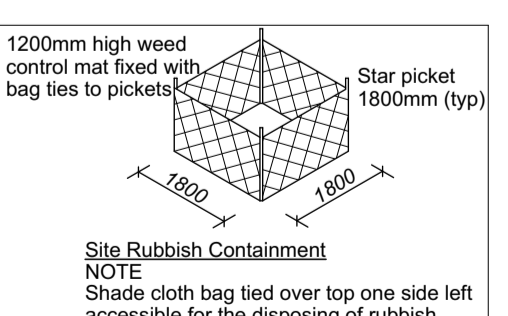
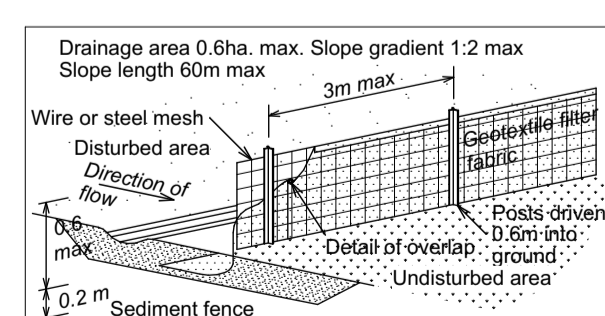


- (A) EASEMENT FOR THE DRAINAGE OF WATER 2.5 WIDE (VIDE DP 874539)
- (E) PROPOSED EASEMENT FOR THE DRAINAGE OF WATER 1.5 WIDE

**SITE PLAN PROPOSED**

1:200 @ A1  
1:400 @ A3  
DENOTES DEMOLITION WORKS

www.dialbeforeyoudig.com.au  
**DIAL 1100**  
BEFORE YOU DIG  
IT IS THE BUILDERS RESPONSIBILITY TO CONFIRM DEPTH & LOCATION OF ALL SERVICES PRIOR TO CONSTRUCTION AS THIS MAY AFFECT THE DESIGN



PROJECT:	PROPOSED SUBDIVISION AT LOT 9116, DP874539; 10 HERMITAGE CLOSE THORNTON		
CLIENT:	HERMITAGE		
TITLE:	SITE PLAN PROPOSED		
FILE:	2203332	DATE:	9/11/2022
		SHEET:	1 OF 1
THESE PLANS ARE SUBJECT TO COPYRIGHT			

A	9/11/22 - INITIAL ISSUE
ISSUE	DETAILS

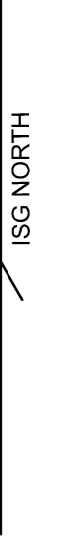
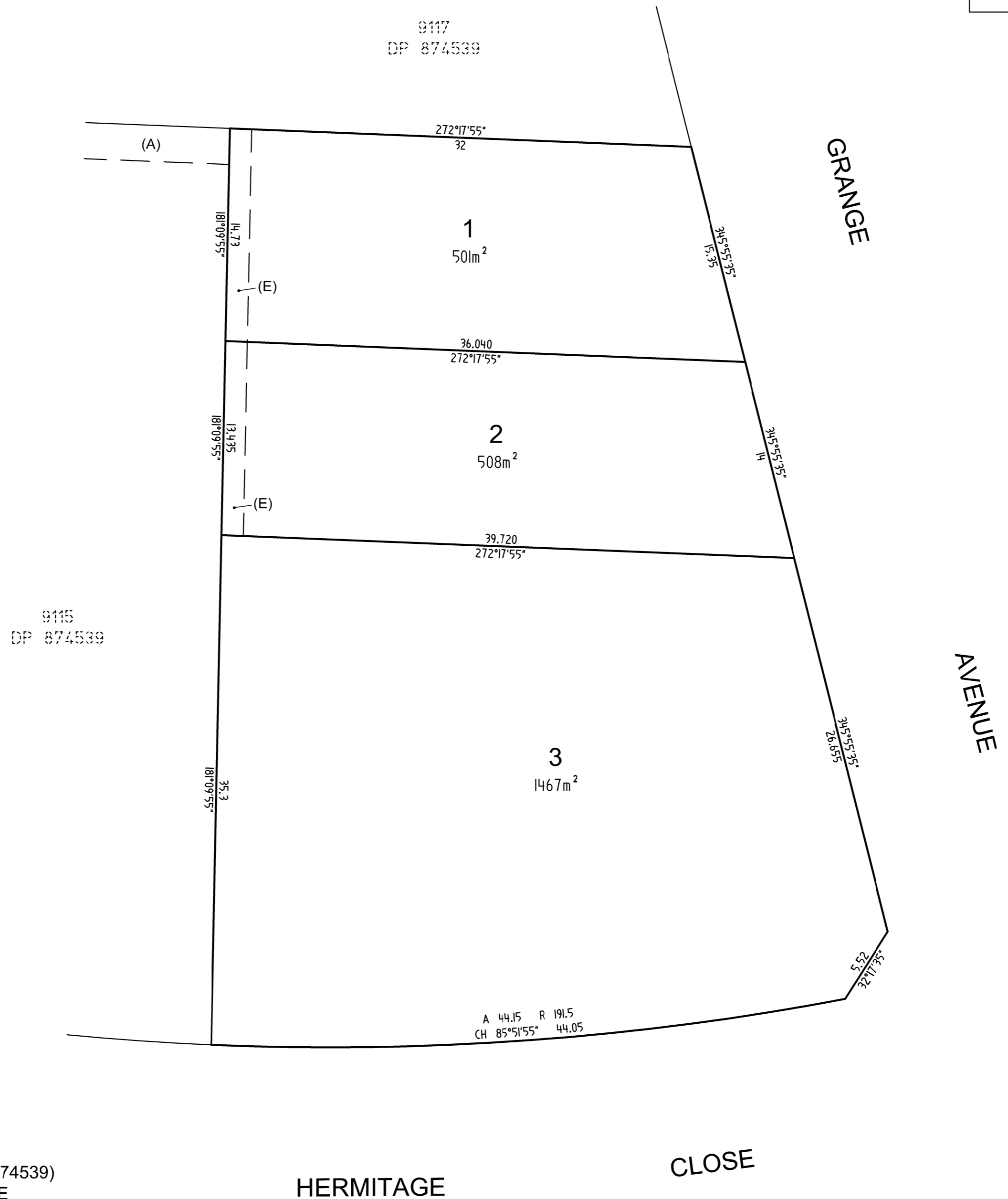
CONCEPT PLANS  
NOT FOR CONSTRUCTION

COORDINATE SCHEDULE

MARK	MGA COORDINATES		CLASS	PU	METHOD	STATE
	EASTING	NORTHING				
					SCIMS	FOUND
					SCIMS	FOUND
					SCIMS	FOUND
DATE OF SCIMS COORDINATES: / /20 MGA ZONE: 56						
MGA DATUM: GDA						
COMBINED SCALE FACTOR 0.999						

NOTE: ALL BEARINGS, DISTANCES, AREAS AND EASEMENTS ARE SUBJECT TO FINAL SURVEY AND REGISTRATION OF A PLAN OF SUBDIVISION

**DRAFT**  
REVISION A 9/11/2022



- (A) EASEMENT FOR THE DRAINAGE OF WATER 2.5 WIDE (VIDE DP 874539)
- (E) PROPOSED EASEMENT FOR THE DRAINAGE OF WATER 1.5 WIDE

**NORTH POINT SURVEYS (NSW) PTY LTD**  
 ATF NORTH POINT SURVEYS TRUST AEN 52 041 968 075  
 SURVEYING AND LAND DEVELOPMENT CONSULTANTS  
 Level 1 | 19 Stockton Street | Nelson Bay NSW 2315  
 PO Box 378 | Nelson Bay NSW 2315  
 Phone: 02 4984 2606  
 Email: [admin@northpointsurveys.com.au](mailto:admin@northpointsurveys.com.au)

SURVEYOR  
 Name: ANDREW EDWARD DALY  
 Date: .  
 Reference: 37926

PLAN OF PROPOSED SUBDIVISION  
 OF LOT 9116 DP 874539

LGA: MAITLAND  
 Locality: THORNTON  
 Reduction Ratio 1: 250  
 Lengths are in metres

REGISTERED