

SITE PLAN NOTES

1. DO NOT SCALE DRAWINGS. VERIFY ALL DIMENSIONS ON SITE PRIOR TO COMMENCING.
2. THE CONTRACTOR SHALL BE RESPONSIBLE FOR ENGAGEMENT OF LICENSED BUILDING SURVEYOR TO SET-OUT THE WORKS AND TO VERIFY DIMENSIONS, BEARING, LEVELS AND EXISTENCE OF SERVICES.
3. UNLESS OTHERWISE SPECIFIED, MATERIALS AND WORKMANSHIP SHALL BE IN ACCORDANCE WITH OR BETTER THAN REQUIREMENTS OF RELEVANT AUSTRALIAN STANDARDS.
4. ALL ITEMS USED IN THE WORKS ARE TO BE USED, FIXED, INSTALLED, APPLIED, ETC. IN ACCORDANCE WITH THE MANUFACTURERS SPECIFICATIONS.
5. ALL DISCONNECTION, RELOCATING, CUTTING AND SEALING OF BUILDING SERVICES ARE TO BE DONE IN ACCORDANCE WITH THE RELEVANT AUTHORITY.
6. THIS DRAWING SHALL BE READ IN CONJUNCTION WITH THE SPECIFICATION & FINISHES SCHEDULE TOGETHER WITH ALL ISSUED INSTRUCTIONS AND OTHER ARCHITECTURAL AND SUBCONSULTANTS DRAWINGS.
7. AMENDED DRAWINGS SHALL SUPERSEDE ALL PREVIOUS REVISIONS.
8. REFER ANY DISCREPANCIES, INCONSISTENCIES AND OTHER PROBLEMS TO THE ARCHITECT BEFORE PROCEEDING. DO NOT TAKE ANY ACTION UNTIL AN INSTRUCTION FROM THE ARCHITECT IS RECEIVED.

LEGEND

- SITE BOUNDARY
- ▨ NOT IN SCOPE
- EXISTING VEGETATION
- PROPOSED VEGETATION
- ▭ GRATE
- ⊙ H FIRE HYDRANT
- ⊙ LP LIGHT POLE
- ⊙ SM SEWER MANHOLE
- ⊙ TP TELECOM PIT
- ⊙ TAP
- ⊙ WM WATER METER
- UNDERGROUND SERVICES
- ⊕ 22.810 EXISTING RELATIVE LEVEL REFER SURVEY

01 Proposed Site Plan
1:500

BREATHE
ARCHITECTURE

THE COMMONS
9 FLORENCE ST
BRUNSWICK 3056
VIC AUSTRALIA
+61 3 9381 2007
www.breathe.com.au

REV	COMMENTS	DATE
01	DA APPLICATION Development Application Issue	21/6/21

TOWN PLANNING

REVISION	JOB	PLOT DATE	ARCHITECT	CAD	SCALE
01	2109	2/11/21	JM	FF/OP	1:500, 1:100 @ A3

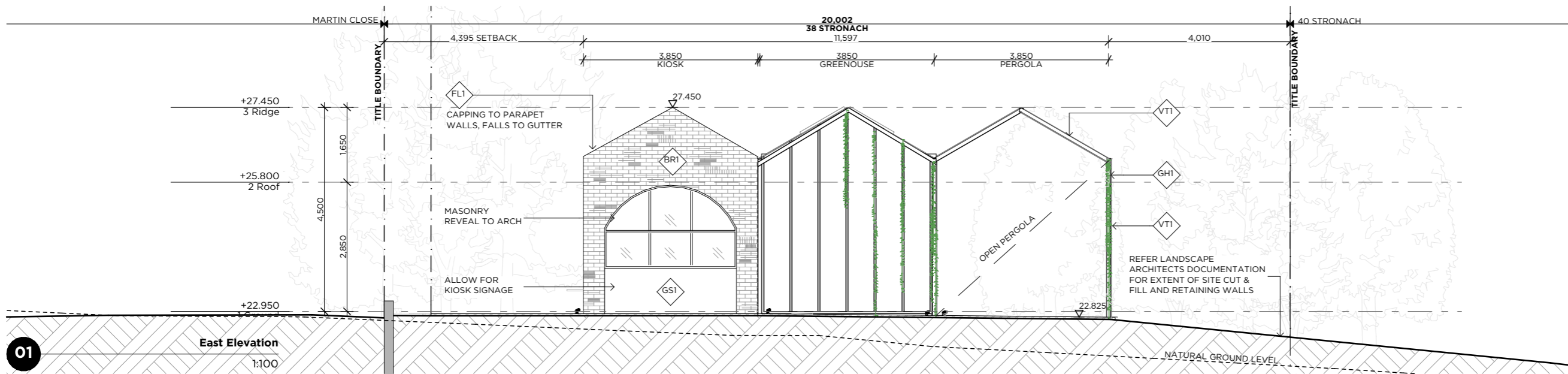


PROJECT
East Maitland

DRAWING TITLE
Proposed Site Plan

DRAWING

TP04

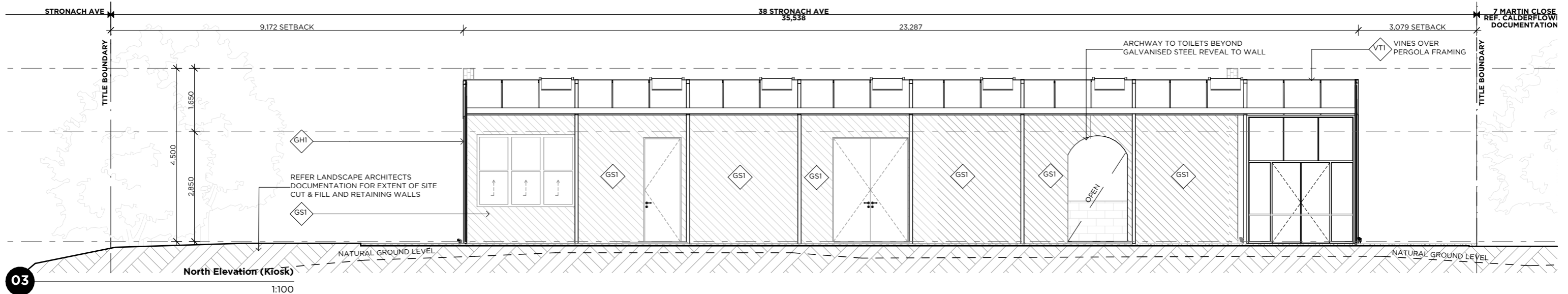
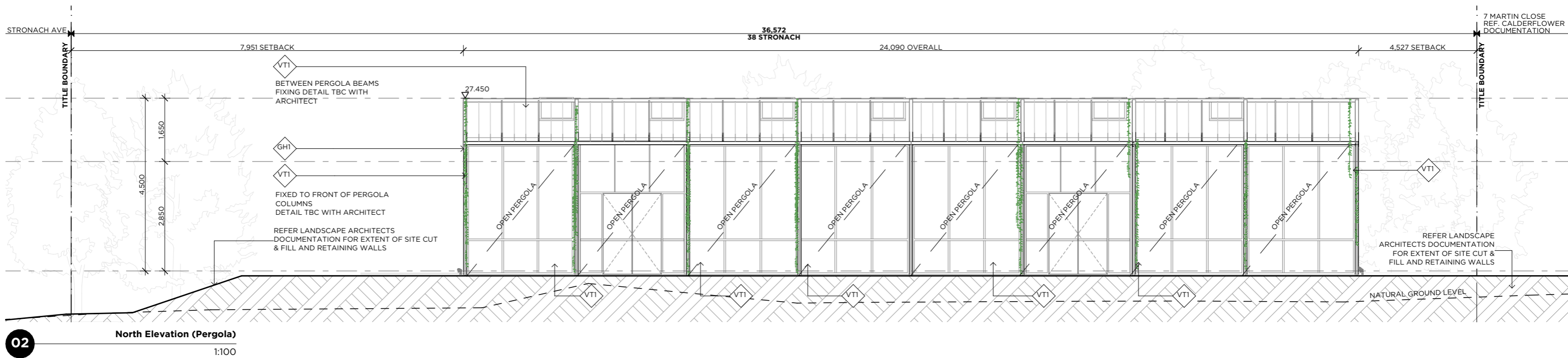


SECTION & ELEVATIONS NOTES

1. TO BE READ IN CONJUNCTION WITH PROJECT SPECIFICATION AND SCHEDULES.

LEGEND

- SITE BOUNDARY
- D.000.1 DOOR TAG
- W.000.1 WINDOW TAG
- DIMENSION (with double arrows) STATIC DIMENSION
- DIMENSION (with single arrows) RUNNING DIMENSION
- DIMENSION (with dashed arrows) RL DIMENSION
- ## MATERIAL CODE
- WT## WALL TYPE TAG
- JU# JOINERY UNIT TAG



BREATHE ARCHITECTURE

THE COMMONS
9 FLORENCE ST
BRUNSWICK 3056
VIC AUSTRALIA
+61 3 9381 2007
www.breathe.com.au

REV	COMMENTS	DATE
01	DA APPLICATION Development Application Issue	21/6/21

TOWN PLANNING

REVISION	JOB	PLOT DATE	ARCHITECT	CAD	SCALE
01	2109	2/11/21	JM	FF/OP	1:100 @ A3

PROJECT
East Maitland

DRAWING TITLE
Proposed External Elevations Sheet 01

DRAWING

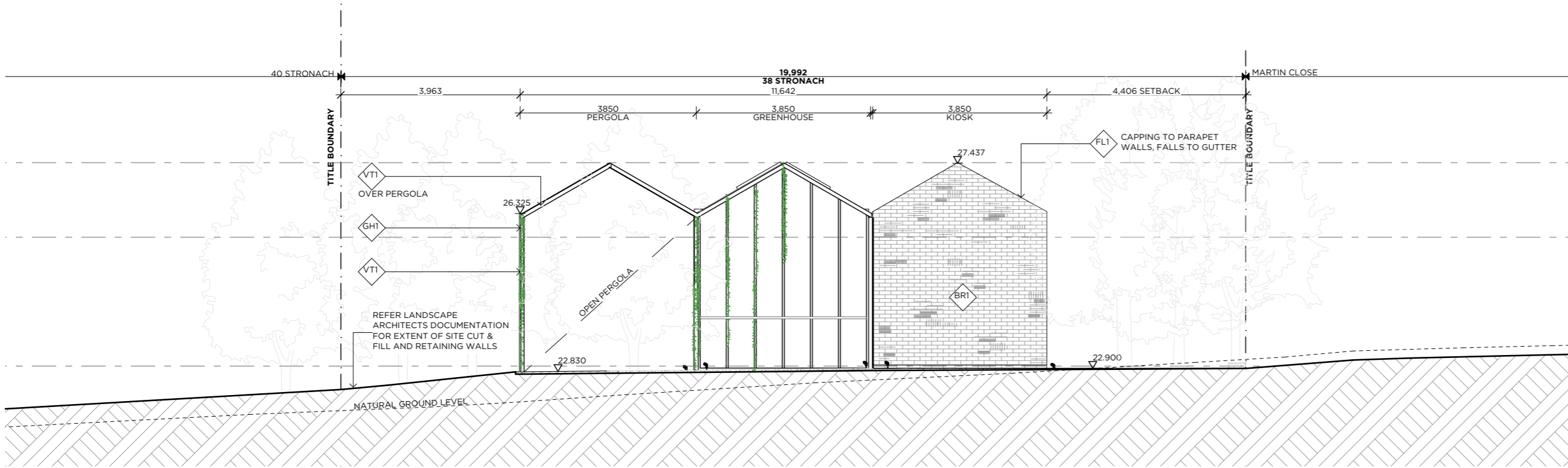
TP07

SECTION & ELEVATIONS NOTES

1. TO BE READ IN CONJUNCTION WITH PROJECT SPECIFICATION AND SCHEDULES.

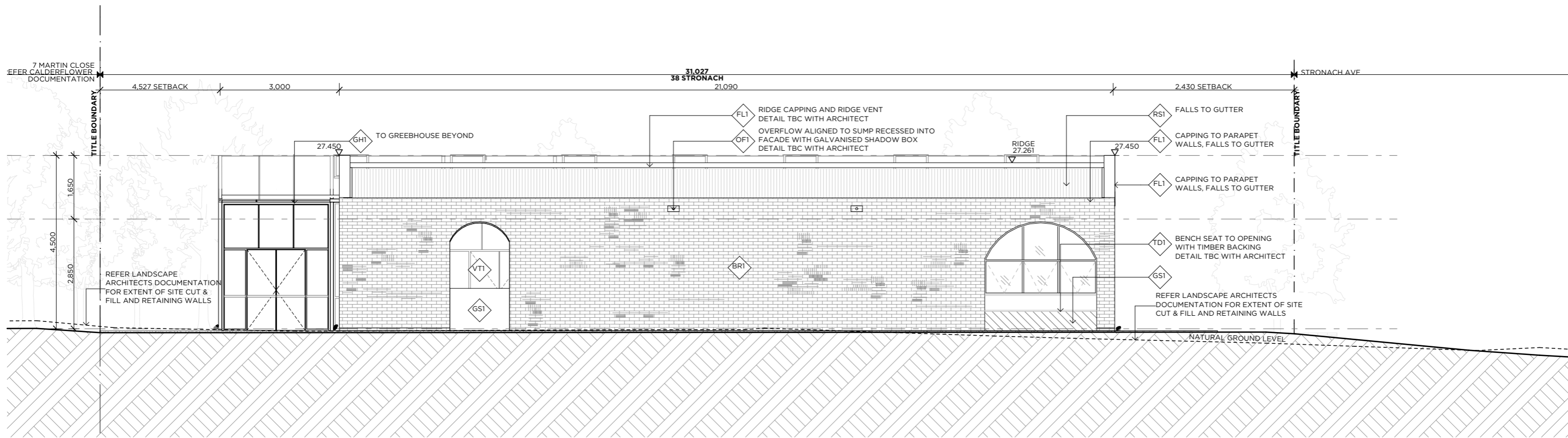
LEGEND

- SITE BOUNDARY
- D.000.1 DOOR TAG
- W.000.1 WINDOW TAG
- DIMENSION STATIC DIMENSION
- DIMENSION RUNNING DIMENSION
- DIMENSION RL DIMENSION
- ## MATERIAL CODE
- WT## WALL TYPE TAG
- JU# JOINERY UNIT TAG



West Elevation
1:100

01



South Elevation
1:100

02

BREATHE ARCHITECTURE

THE COMMONS
9 FLORENCE ST
BRUNSWICK 3056
VIC AUSTRALIA
+61 3 9381 2007
www.breathe.com.au

REV	COMMENTS	DATE
01	DA APPLICATION Development Application Issue	21/6/21

TOWN PLANNING

REVISION	JOB	PLOT DATE	ARCHITECT	CAD	SCALE
01	2109	2/11/21	JM	FF/OP	1:100 @ A3

PROJECT
East Maitland

DRAWING TITLE
Proposed External Elevations Sheet 02

DRAWING

TP08

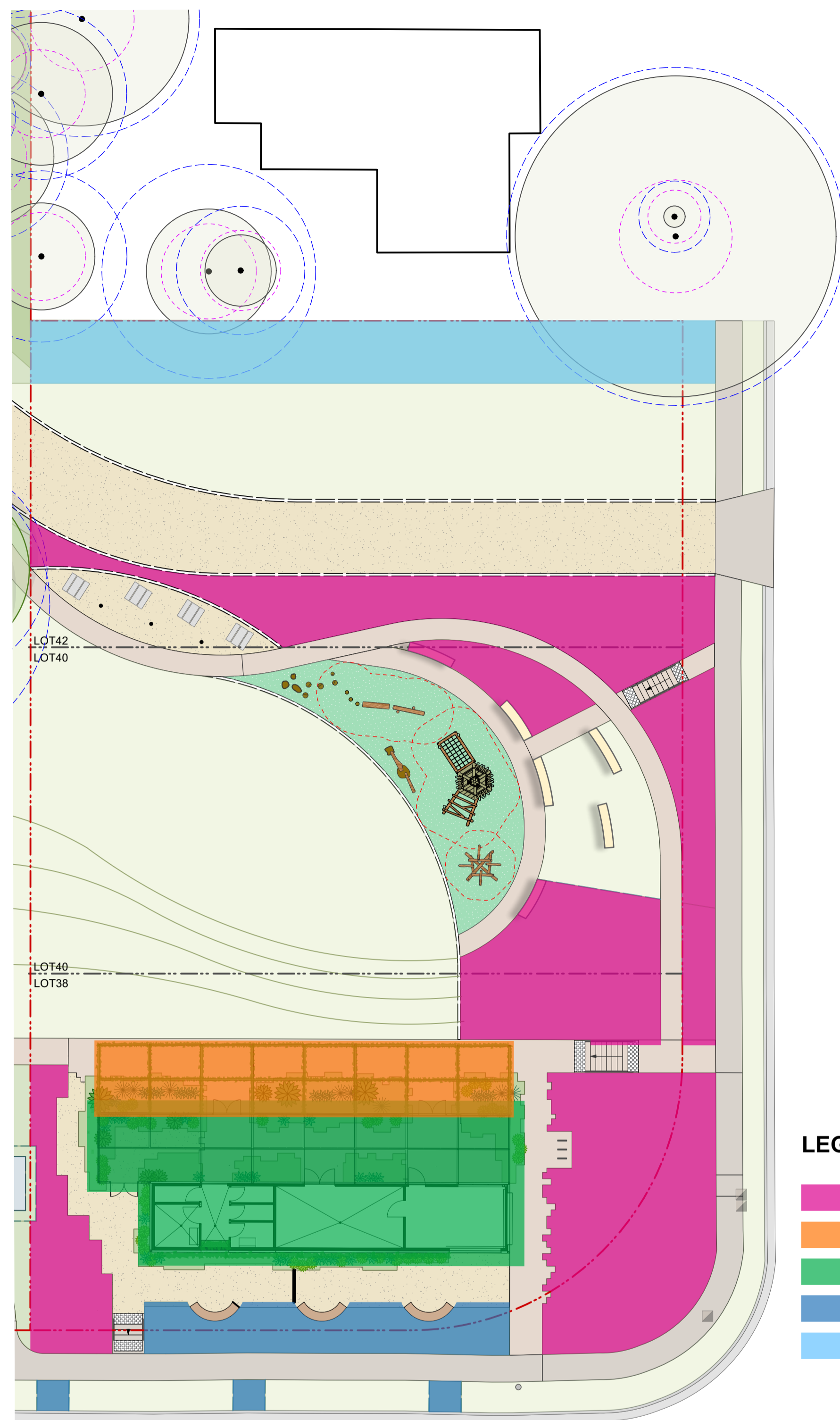
TREE SCHEDULE							
Code	Botanical Name	Common Name	Spacing	Provenance	Av Mature Hgt.	Pot Size	Qty.
Trees							
ATRact	<i>Atractocarpus fitzalanii</i>	Native Gardenia	as shown	native	6m	200L	2
BACcit	<i>Backhousia citriodora</i>	Lemon myrtle	as shown	native	20m	200L	2
CORmac	<i>Corymbia maculata</i>	Spotted Gum	as shown	indigenous	over 30m	100L	8
CYAaus	<i>Cyathea australis</i>	Rough Tree Fern		native	2.5 - 10m	Min 1.5m trunk	8
EUCfib	<i>Eucalyptus fibrosa</i>	Broad-leaved Ironbark, Red Ironbark	as shown	indigenous	over 30m	100L	4
HYMfla	<i>Hymenosporum flavum</i>	Native frangipani	as shown	indigenous	10 - 15m	100L	2

Martin Close Landscape Buffer						
Code	Botanical Name	Common Name	Spacing	Provenance	Av Mature Hgt.	Pot Size
Shrubs/Grasses/Groundcovers						
ALOalw	<i>Aloe 'Always Red'</i>	Sirius Aloe	4/sqm	exotic	0.3 - 1.5m	200mm
ALOpri	<i>Aloe 'Bush Baby Yellow'</i>	Bush Baby Aloe	5/sqm	exotic	0.3 - 1.5m	140mm
ALOsou	<i>Aloe 'Southern Cross'</i>	Southern Cross Aloe	4/sqm	exotic	0.3 - 1.5m	200mm
DIACae	<i>Dianella caerulea</i>	Blue Flax-lily	5/sqm	indigenous	0.45 - 0.6m	140mm
DICrep	<i>Dichondra repens</i>	Kidney Weed	5/sqm	indigenous	0.0 - 0.3m	100mm
LOMkat	<i>Lomandra longifolia</i>	Katrinus	4/sqm	native	0.75 - 1.5m	140mm
LOMver	<i>Lomandra longifolia</i>	Verday	5/sqm	native	0.75 - 1.5m	140mm
PENalo	<i>Pennisetum alopecuroides 'Nafray'</i>	Nafray	5/sqm	native	0.9 - 1.5m	140mm
VIOhed	<i>Viola hederacea</i>	Native Violet	5/sqm	indigenous	0.0 - 0.3m	140mm

Recreation Area						
Code	Botanical Name	Common Name	Spacing	Provenance	Av Mature Hgt.	Pot Size
Shrubs/Grasses/Groundcovers						
BURspi	<i>Bursaria spinosa</i>	Sweet bursaria	1/sqm	indigenous	5 - 10m	200mm
CALgre	<i>Callistemon 'Great Balls of Fire'</i>	Great Balls of Fire	1/sqm	native	1.5 - 3m	200mm
DIACae	<i>Dianella caerulea</i>	Blue Flax-lily	5/sqm	indigenous	0.45 - 0.6m	140mm
DIArev	<i>Dianella revoluta</i>	Blueberry Lily	5/sqm	indigenous	0.75 - 0.9m	140mm
DORexe	<i>Doryanthes excelsa</i>	Gynea Lily	1/sqm	native	1.5 - 3m	300mm
HARvio	<i>Hardenbergia violacea</i>	Purple coral pea	4/sqm	indigenous	climber	140mm
IMPcyl	<i>Imperata cylindrica</i>	Blady Grass	5/sqm	indigenous	0.9 - 1.5m	140mm
LOMkat	<i>Lomandra longifolia</i>	Katrinus	4/sqm	native	0.75 - 1.5m	140mm
LOMver	<i>Lomandra longifolia</i>	Verday	5/sqm	native	0.75 - 1.5m	140mm
MACcom	<i>Macrozamia communis</i>	Burrawang	1/sqm	indigenous	1.5 - 3m	45L
MELnod	<i>Melaleuca nodosa</i>	Prickly-leaved paperbark	1/sqm	indigenous	5 - 10m	200mm
MICsti	<i>Microlaena stipoides</i>	Weeping Grass	5/sqm	indigenous	0.6 - 0.75m	140mm
OZOtha	<i>Ozothamnus diosmifolius</i>	Rice Flower	2/sqm	indigenous	3 - 5m	140mm
THETri	<i>Themeda triandra</i>	Kangaroo Grass	5/sqm	indigenous	0.9 - 1.5m	140mm
XANgla	<i>Xanthorrhoea glauca subsp angustifolia</i>	Grasstree	1/sqm	native	0.9 - 1.5m	300mm

Greenhouse & Kiosk						
Code	Botanical Name	Common Name	Spacing	Provenance	Av Mature Hgt.	Pot Size
Shrubs/Grasses/Groundcovers						
ALOmac	<i>Alocasia macrorrhiza</i>	Giant Elephant Ear	1/sqm	native	0.9 - 1.5m	300mm
ASPAus	<i>Asplenium australasicum</i>	Crow's Nest Fern	2/sqm	native	0.9 - 1.5m	200mm
BLEsil	<i>Blechnum 'Silver Lady'</i>	Silver Lady Fern	4/sqm	exotic	0.9 - 1.5m	200mm
CALzeb	<i>Calathea zebrina</i>	Zebra Plant	4/sqm	exotic	1.5 - 3m	200mm
COLesc	<i>Colocasia esculenta</i>	Taro	4/sqm	exotic	0.9 - 1.5m	200mm
CTEbur	<i>Ctenanthe 'Burlie Marxii'</i>	Fishbone Prayer Plant	5/sqm	exotic	0.0 - 0.3m	200mm
DICrep	<i>Dichondra repens</i>	Kidney Weed	5/sqm	indigenous	0.0 - 0.3m	100mm
MONdel	<i>Monstera deliciosa</i>	Swiss Cheese Plant	1/sqm	exotic	1.5 - 3m	300mm
MONtau	<i>Monstera deliciosa 'Tauerii'</i>	Dwarf Swiss Cheese Plant	2/sqm	exotic	0.5 - 1.5m	200mm
NEOgra	<i>Neomarica gracilis</i>	Brazilian Walking Iris	5/sqm	exotic	0.3 - 0.6m	200mm
PHIcor	<i>Philodendron cordatum</i>	Corktree	5/sqm	exotic	5 - 10m	140mm
PHIxa	<i>Philodendron 'Xanadu'</i>	Philodendron 'Xanadu'	1/sqm	exotic	0.75 - 1.0m	140mm
PLEamb	<i>Plectranthus ambiguus 'Nico'</i>	Swedish Ivy	5/sqm	exotic	1.5m	140mm
VIOhed	<i>Viola hederacea</i>	Native Violet	5/sqm	indigenous	0.0 - 0.3m	140mm

Landscape Buffer						
Code	Botanical Name	Common Name	Spacing	Provenance	Av Mature Hgt.	Pot Size
Shrubs/Grasses/Groundcovers						
ACEsub	<i>Acmena smithii Sublime</i>	Lillypilly	1/m	indigenous	5 - 10m	300mm



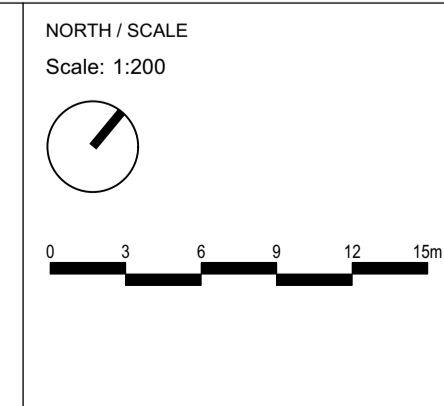
LEGEND

- RECREATION AREA
- PERGOLA
- GREENHOUSE & KIOSK
- MARTIN CLOSE LANDSCAPE BUFFER
- LANDSCAPE BUFFER

PLANT SCHEDULE					
Code	Botanical Name	Common Name	Av Mature Hgt.	Provenance	Pot Size
Shrubs/Grasses/Groundcovers or Planting Bed No.					
APHres	<i>Aphanopetalum resinosum</i>	Gum Vine	climber	native	200mm
CIHy	<i>Cissus hypoglauca</i>	Water Vine, Native Grape	climber	indigenous	200mm
CISant	<i>Cissus antarctica</i>	Kangaroo Vine, Water Vine	climber	indigenous	200mm
HARvio	<i>Hardenbergia violacea</i>	Purple coral pea	climber	indigenous	200mm
HIBsca	<i>Hibbertia scandens</i>	Yellow Guinea Flower	climber	native	200mm
PaJa	<i>Pandorea jasminoides</i>	Bower Vine	climber	native	200mm
PaPa	<i>Pandorea pandorana</i>	Wonga Wonga Vine	climber	native	200mm
PaTr	<i>Parthenocissus tricuspidata</i>	Boston Ivy	climber	exotic	200mm
TrJa	<i>Trachelospermum jasminoides</i>	Star Jasmine	climber	exotic	200mm

FOR DEVELOPMENT APPLICATION ONLY

ISSUE	DESCRIPTION	BY	APPD	DATE
A	FOR DEVELOPMENT APPLICATION	AM	SW	13/08/2021

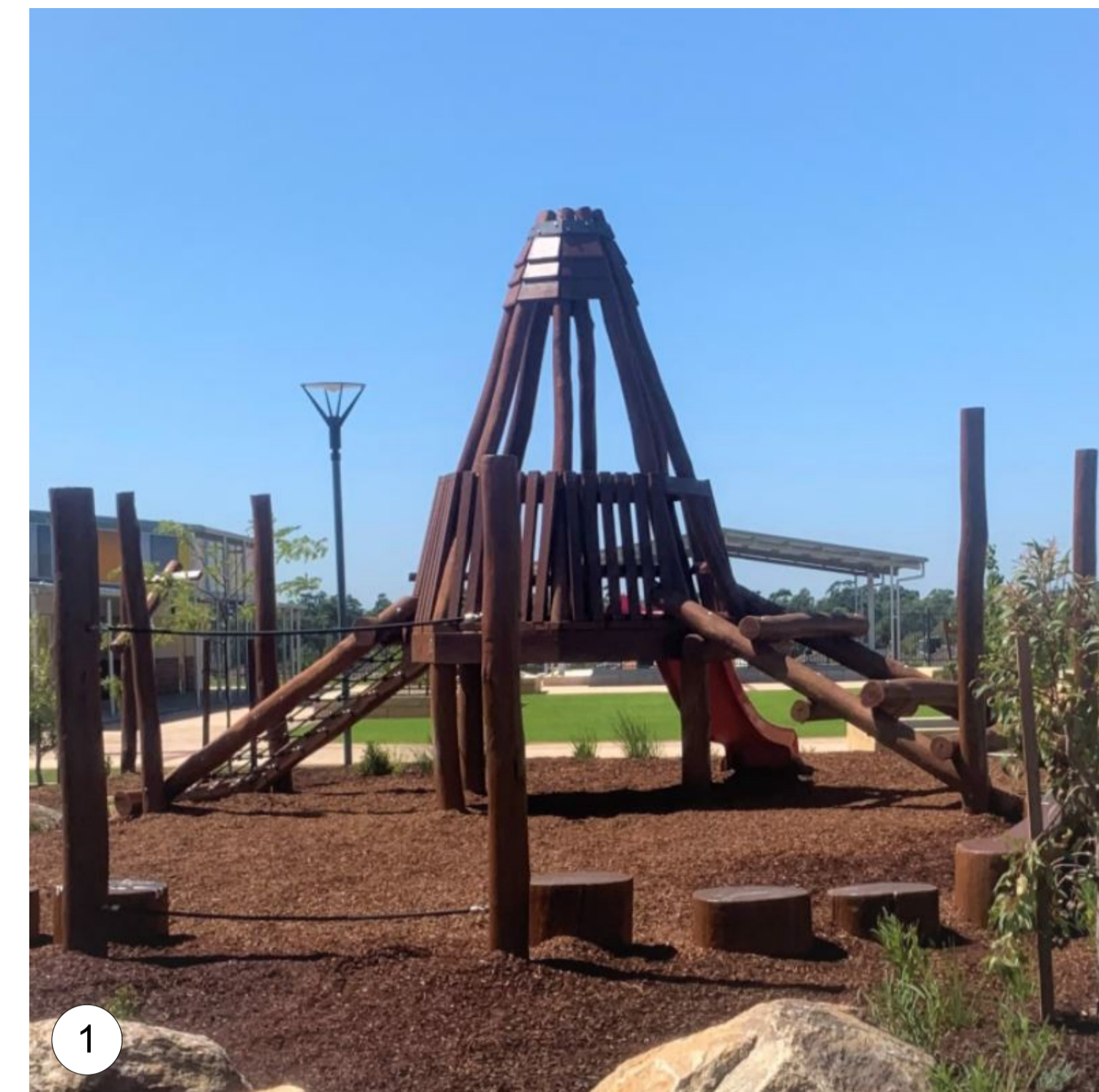


PROJECT TEAM	
ARCHITECT Breathe Architecture Studio 2, The Commons, 9 Florence Street, Brunswick VIC 3056 Telephone: (03) 9381 2007	PROJECT MANAGER Icon Project Management Level 10, 350 Kent Street, Sydney NSW 2000 Telephone: (02) 8035 2300
CIVIL ENGINEER Birzulis Associates 105 Moreweather Street, Moreweather NSW 2291 Telephone: (02) 4049 4855	CONSULTANT Ethos Urban (Town Planner) 173 Sussex Street, Sydney NSW 2000 Telephone: (02) 9696 6962
ARBORIST ArborViews Australia www.arborviews.com.au Telephone: 0414 682 001	LANDSCAPE ARCHITECT Context Landscape Design Pty Ltd Level 2, 52-58 William Street, East Sydney NSW 2011 PO Box 4868, Sydney South NSW 1235 T. 61 2 8244 8500 W. www.context.net.au ABN: 14 093 350 719

CLIENT NAME		
CHURCHES OF CHRIST PROPERTY TRUST		
PROJECT	38-42 STRONACH AVENUE	
38-42 STRONACH AVENUE, EAST MAITLAND, NSW, 2323		

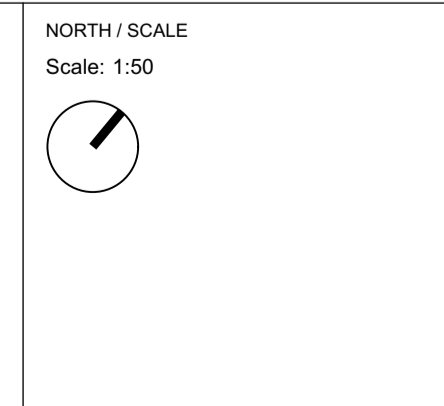
DRAWING TITLE		
PLANTING ZONES PLAN & SCHEDULES		
PROJECT STAGE	ISSUE FOR DEVELOPMENT APPLICATION	
PROJECT NUMBER	DRAWING NUMBER	ISSUE
21530	LA_5001	A

SHEET SIZE		
A1		



FOR DEVELOPMENT APPLICATION ONLY

ISSUE	DESCRIPTION	BY	APPD	DATE
A	FOR DEVELOPMENT APPLICATION	AM	SW	13/08/2021



PROJECT TEAM

ARCHITECT
Breathe Architecture
Studio 2, The Commons, 9 Florence Street, Brunswick VIC 3056
Telephone: (03) 9381 2007

CIVIL ENGINEER
Birzulis Associates
105 Morewether Street, Morewether NSW 2291
Telephone: (02) 4049 4855

PROJECT MANAGER
Icon Project Management
Level 10, 350 Kent Street, Sydney NSW 2000
Telephone: (02) 8035 2300

CONSULTANT
Ethos Urban (Town Planner)
173 Sussex Street, Sydney NSW 2000
(02) 9596 6962

ARBORIST
ArborViews Australia
www.arborviews.com.au
Telephone: 0414 682 001

ARCHITECT
Calderflower Architects
2140 Myrtle Street, Chippendale NSW 2008
(02) 9698 9822

LANDSCAPE ARCHITECT
CONTEXT
LANDSCAPE ARCHITECTURE

Context Landscape Design Pty Ltd
Level 2, 52-58 William Street, East Sydney NSW 2011
PO Box A868, Sydney, South NSW 1235
T. 61 2 8244 8500 W. www.context.net.au
ABN: 14 093 350 719

CLIENT NAME
CHURCHES OF CHRIST PROPERTY TRUST

PROJECT
38-42 STRONACH AVENUE
38-42 STRONACH AVENUE, EAST MAITLAND, NSW, 2323

DRAWING TITLE
PLAYGROUND EQUIPMENT

PROJECT STAGE
ISSUE FOR DEVELOPMENT APPLICATION

PROJECT NUMBER
21530

DRAWING NUMBER
LA_8001

ISSUE
A

SHEET SIZE
A1