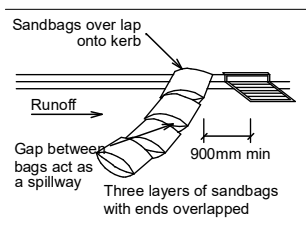
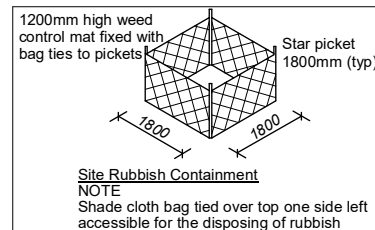
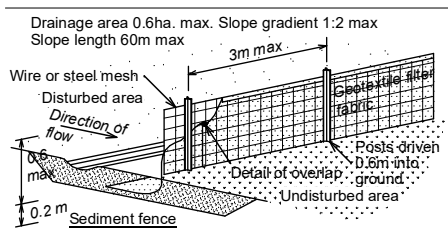
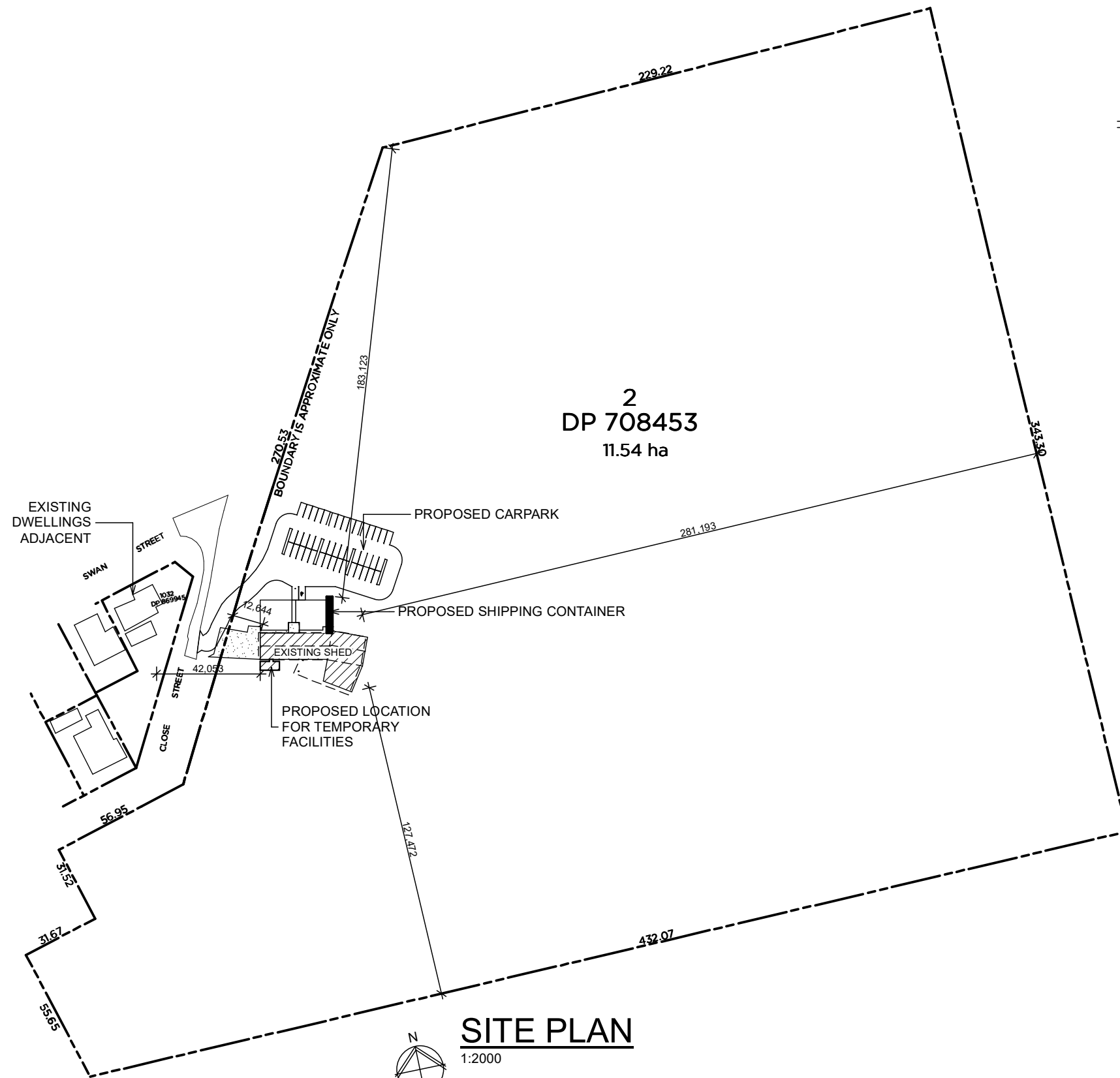
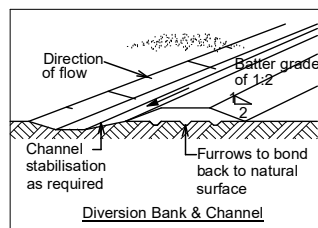


**LEGEND**

- AW AWNING WINDOW
- BFD BI-FOLD DOOR
- CONC CONCRETE
- CPT CARPET
- CW CASEMENT WINDOW
- CSD CAVITY SLIDING DOOR
- DH DOUBLE-HUNG WINDOW
- DP DOWNPIPE
- FG FIXED GLASS
- f.w. FLOOR WASTE
- GB GLASS BLOCKS
- HWS HOT WATER SYSTEM
- LV LOUVRE WINDOW
- PLD PANEL LIFT DOOR
- REF REFRIGERATOR
- RD ROLLER DOOR
- SH SHOWER
- SD SLIDING DOOR
- SW SLIDING WINDOW
- s.d. SMOKE DETECTOR
- VA VANITY BASIN
- WM WASHING MACHINE
- WC WATER CLOSET



- NOTE**
- 1 No vehicle crossing or stockpiling of material on vegetation buffer.
  - 2 All sedimentation control structures to be inspected & maintained by site manager daily.
  - 3 All sediment retaining structures to be cleaned on reaching 50% storage capacity.
  - 4 All existing vegetation will be retained outside the construction site.
  - 5 Clean sediments from footpaths, driveways & roads daily.
  - 6 Roof drainage via sealed pipeline to street gutter on roof completion.

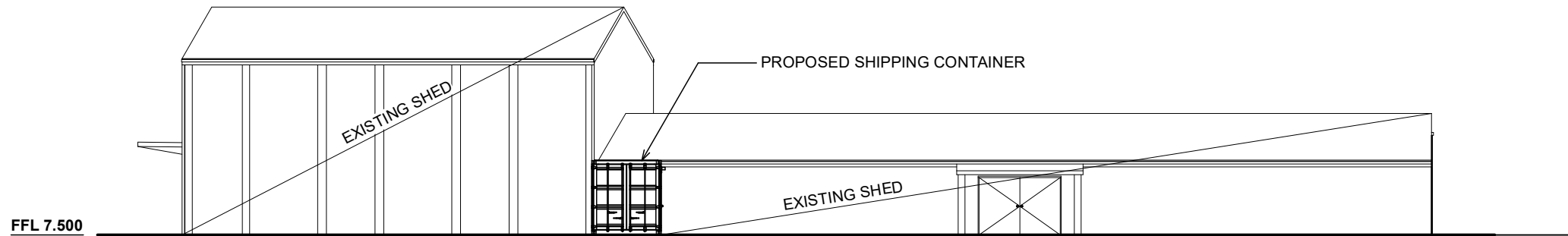


B A	07/12/21 - REVISED ISSUE 28/08/20 - PRELIMINARY ISSUE
ISSUE	DETAILS

**SORENSEN**  
DESIGN & PLANNING

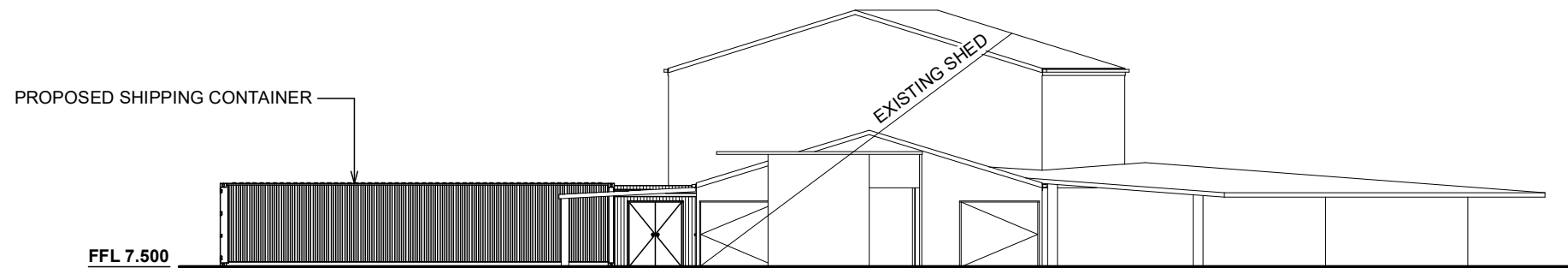
<p><b>PORT STEPHENS OFFICE</b> Ph: (02) 4984 9955</p> <p>Suite 4/ 10 Yacaaba Street Nelson Bay NSW 2315</p>	<p><b>NEWCASTLE OFFICE</b> Ph: (02) 4961 5544</p> <p><b>SINGLETON OFFICE</b> Ph: (02) 4961 5544</p>	<p><b>CONTACT DETAILS</b> General Enquiries: reception@sorensendesign.com.au</p> <p><a href="http://www.sorensendesign.com.au">www.sorensendesign.com.au</a></p>
---	---	--

PROJECT: <b>PROPOSED AMENITIES AT 8 EDWARDS STREET MORPETH</b>		
CLIENT: <b>BOWE</b>		
TITLE: <b>SITE PLAN</b>		
FILE: <b>---</b>	DATE: <b>21/08/20</b>	SHEET: <b>1 OF 8</b>
THESE PLANS ARE SUBJECT TO COPYRIGHT		



## NORTH ELEVATION

1:200



## WEST ELEVATION

1:200



MEMBER OF  
**BUILDING  
DESIGNERS  
AUSTRALIA NSW**



**WINNER 2010**  
HIA Hunter  
Residential Building  
Designer of the Year



**WINNER 2011**  
HIA Hunter  
Residential Building  
Designer of the Year

B	07/12/21 - REVISED ISSUE
A	28/08/20 - PRELIMINARY ISSUE
ISSUE	DETAILS

**SORENSEN**  
DESIGN & PLANNING



**PORT STEPHENS OFFICE**  
Ph: (02) 4984 9955  
Suite 4/ 10 Yacaaba Street  
Nelson Bay NSW 2315

**NEWCASTLE OFFICE**  
Ph: (02) 4961 5544  
**SINGLETON OFFICE**  
Ph: (02) 4961 5544

**CONTACT DETAILS**  
General Enquiries:  
reception@sorensendesign.com.au  
www.sorensendesign.com.au

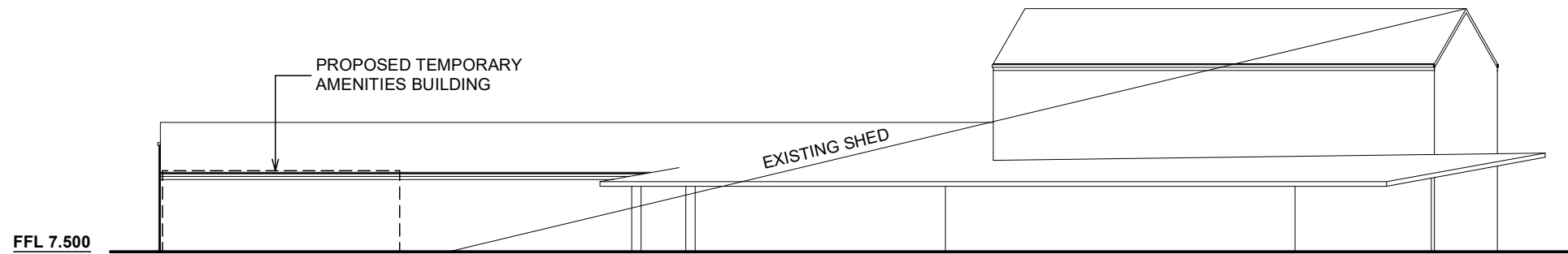
PROJECT: **PROPOSED AMENITIES AT 8 EDWARDS STREET MORPETH**

CLIENT: **BOWE**

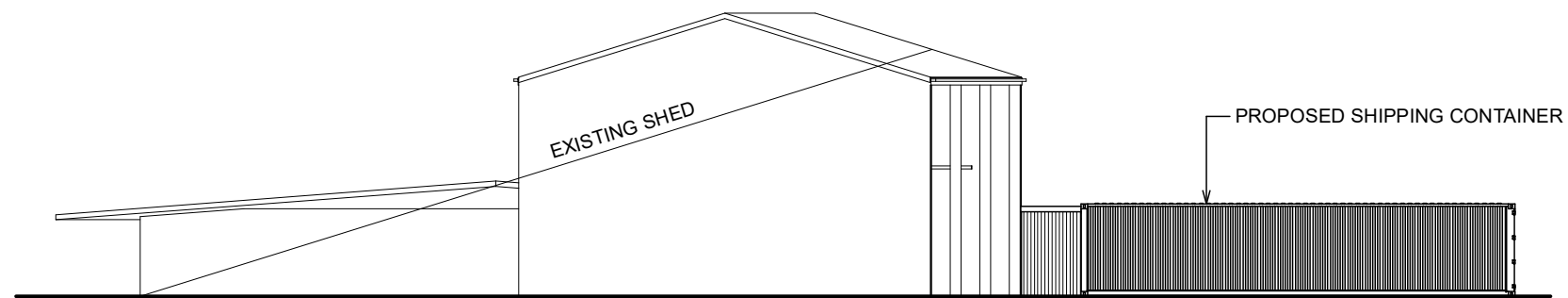
TITLE: **ELEVATIONS**

FILE: \_ DATE: **21/08/20** SHEET: **4 OF 8**

THESE PLANS ARE SUBJECT TO COPYRIGHT



**SOUTH ELEVATION**  
1:200



**EAST ELEVATION**  
1:200



B	07/12/21 - REVISED ISSUE
A	28/08/20 - PRELIMINARY ISSUE
ISSUE	DETAILS

**SORENSEN**  
DESIGN & PLANNING

**S** PORT STEPHENS OFFICE  
Ph: (02) 4984 9955  
Suite 4/ 10 Yacaaba Street  
Nelson Bay NSW 2315

NEWCASTLE OFFICE  
Ph: (02) 4961 5544

SINGLETON OFFICE  
Ph: (02) 4961 5544

CONTACT DETAILS  
General Enquiries:  
reception@sorensendesign.com.au  
www.sorensendesign.com.au

PROJECT: PROPOSED AMENITIES AT 8 EDWARDS STREET MORPETH	
CLIENT: BOWE	
TITLE: ELEVATIONS	
FILE: _	DATE: 21/08/20 SHEET: 5 OF 8
THESE PLANS ARE SUBJECT TO COPYRIGHT	