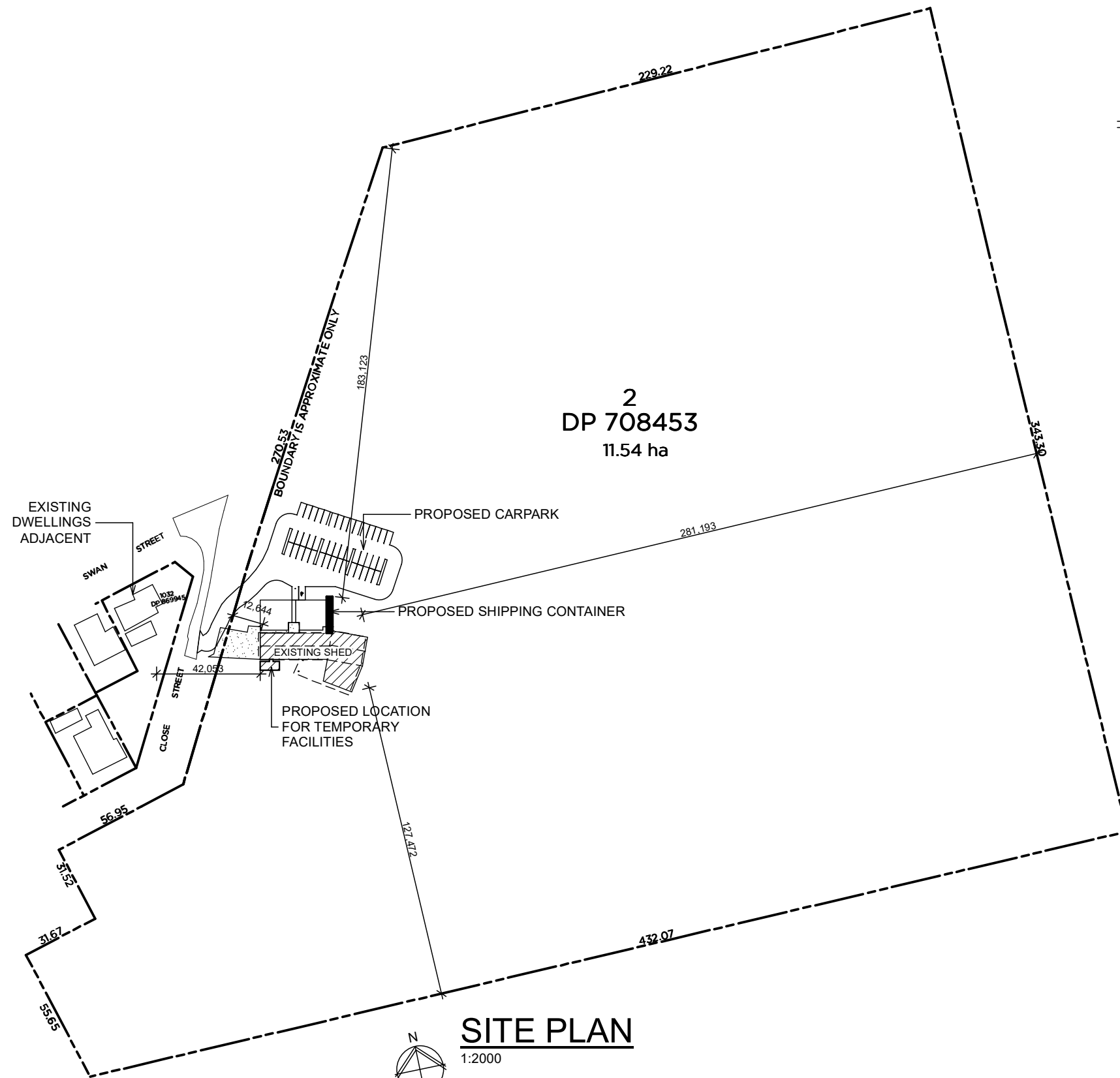
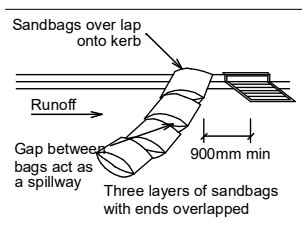
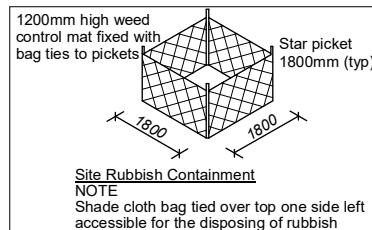
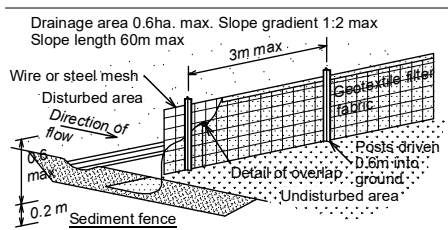


LEGEND

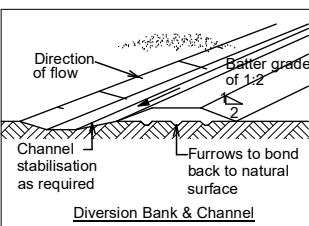
- AW AWNING WINDOW
- BFD BI-FOLD DOOR
- CONC CONCRETE
- CPT CARPET
- CW CASEMENT WINDOW
- CSD CAVITY SLIDING DOOR
- DH DOUBLE-HUNG WINDOW
- DP DOWNPIPE
- FG FIXED GLASS
- f.w. FLOOR WASTE
- GB GLASS BLOCKS
- HWS HOT WATER SYSTEM
- LV LOUVRE WINDOW
- PLD PANEL LIFT DOOR
- REF REFRIGERATOR
- RD ROLLER DOOR
- SH SHOWER
- SD SLIDING DOOR
- SW SLIDING WINDOW
- s.d. SMOKE DETECTOR
- VA VANITY BASIN
- WM WASHING MACHINE
- WC WATER CLOSET



SITE PLAN
1:2000



- NOTE**
- 1 No vehicle crossing or stockpiling of material on vegetation buffer.
 - 2 All sedimentation control structures to be inspected & maintained by site manager daily.
 - 3 All sediment retaining structures to be cleaned on reaching 50% storage capacity.
 - 4 All existing vegetation will be retained outside the construction site.
 - 5 Clean sediments from footpaths, driveways & roads daily.
 - 6 Roof drainage via sealed pipeline to street gutter on roof completion.

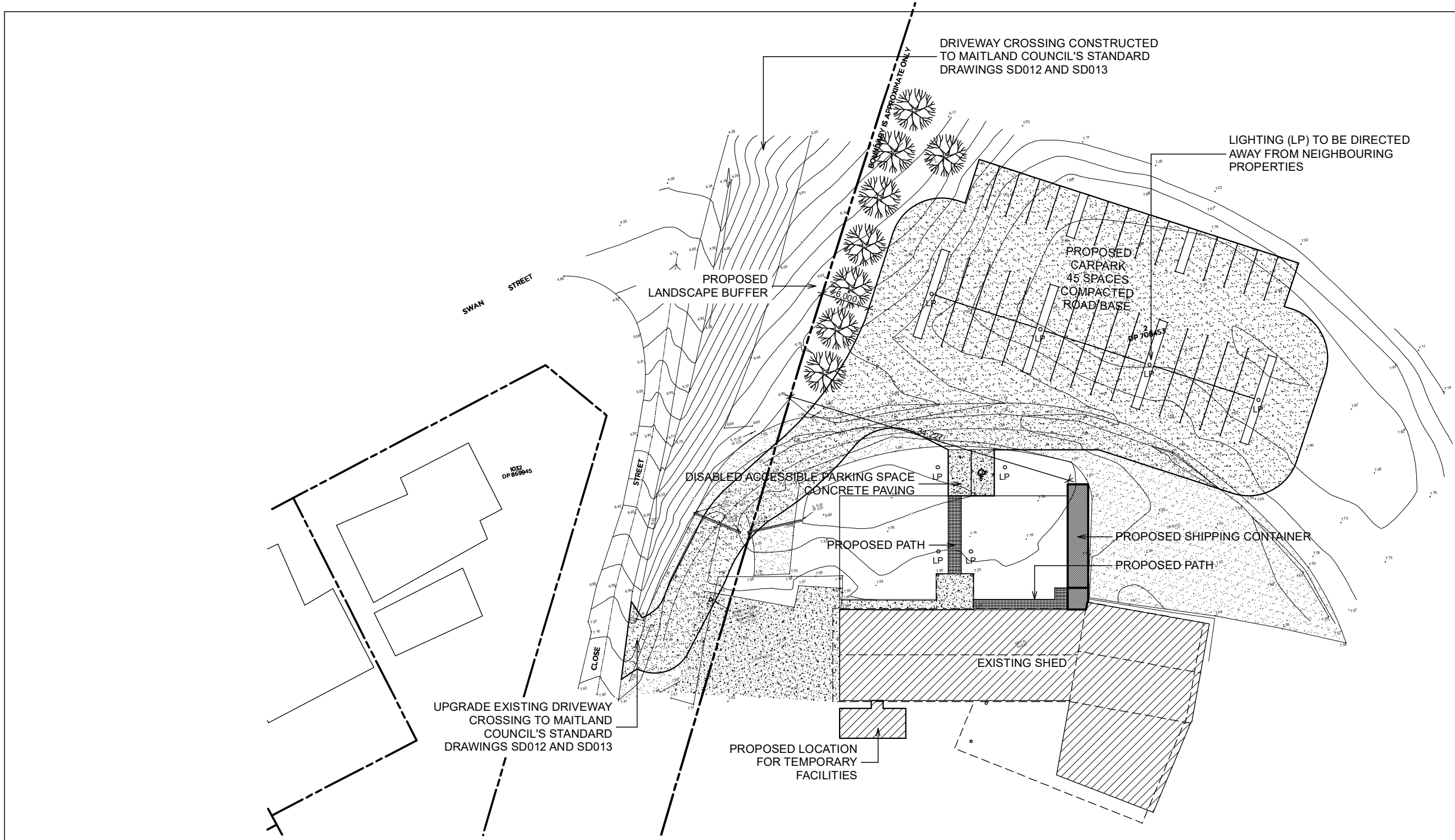


B	07/12/21 - REVISED ISSUE				
A	28/08/20 - PRELIMINARY ISSUE				
ISSUE	DETAILS				

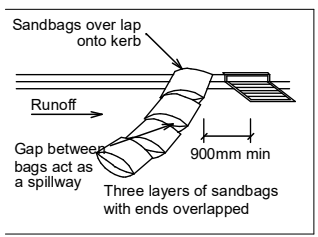
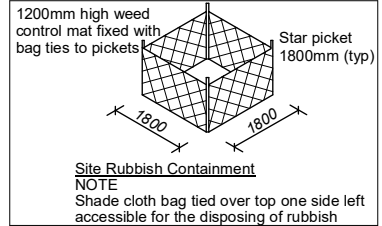
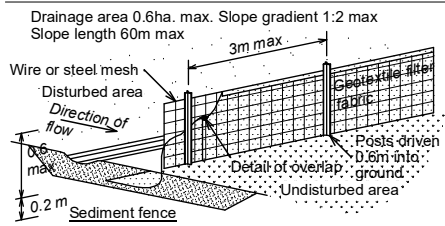
PORT STEPHENS OFFICE Ph: (02) 4984 9955 Suite 4/ 10 Yacaaba Street Nelson Bay NSW 2315	NEWCASTLE OFFICE Ph: (02) 4961 5544 SINGLETON OFFICE Ph: (02) 4961 5544	CONTACT DETAILS General Enquiries: reception@sorensendesign.com.au www.sorensendesign.com.au
--	--	--

PROJECT: PROPOSED AMENITIES AT 8 EDWARDS STREET MORPETH			
CLIENT: BOWE			
TITLE: SITE PLAN			
FILE: _	DATE: 21/08/20	SHEET: 1	OF 8
THESE PLANS ARE SUBJECT TO COPYRIGHT			



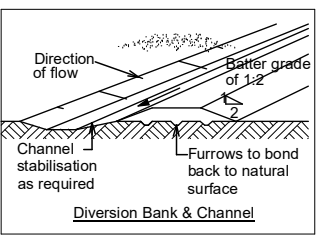


- LEGEND**
- AW AWNING WINDOW
 - BFD BI-FOLD DOOR
 - CONC CONCRETE
 - CPT CARPET
 - CW CASEMENT WINDOW
 - CSD CAVITY SLIDING DOOR
 - DH DOUBLE-HUNG WINDOW
 - DP DOWNPIPE
 - FG FIXED GLASS
 - f.w. FLOOR WASTE
 - GB GLASS BLOCKS
 - HWS HOT WATER SYSTEM
 - LV LOUVRE WINDOW
 - PLD PANEL LIFT DOOR
 - REF REFRIGERATOR
 - RD ROLLER DOOR
 - SH SHOWER
 - SD SLIDING DOOR
 - SW SLIDING WINDOW
 - s.d. SMOKE DETECTOR
 - VA VANITY BASIN
 - WM WASHING MACHINE
 - WC WATER CLOSET



NOTE

- 1 No vehicle crossing or stockpiling of material on vegetation buffer.
- 2 All sedimentation control structures to be inspected & maintained by site manager daily.
- 3 All sediment retaining structures to be cleaned on reaching 50% storage capacity.
- 4 All existing vegetation will be retained outside the construction site.
- 5 Clean sediments from footpaths, driveways & roads daily.
- 6 Roof drainage via sealed pipeline to street gutter on roof completion.



DETAILED SITE PLAN
1:500



B A	07/12/21 - REVISED ISSUE 28/08/20 - PRELIMINARY ISSUE
ISSUE	DETAILS

SORENSEN
DESIGN & PLANNING

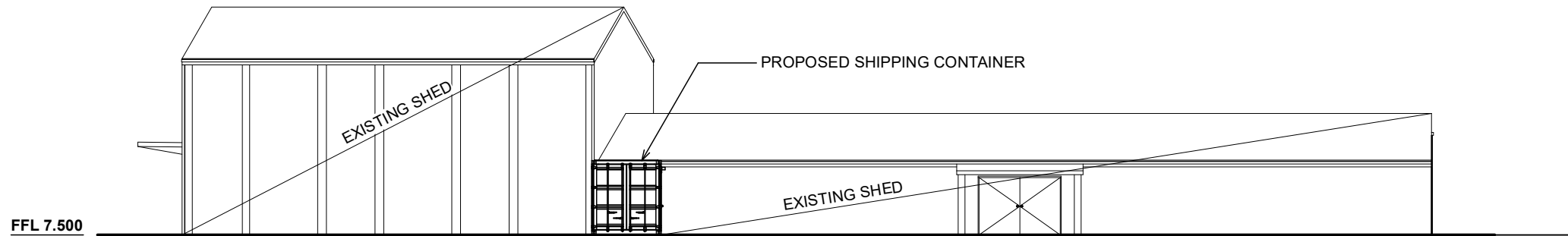
S PORT STEPHENS OFFICE
Ph: (02) 4984 9955
Suite 4/ 10 Yacaaba Street
Nelson Bay NSW 2315

NEWCASTLE OFFICE
Ph: (02) 4961 5544

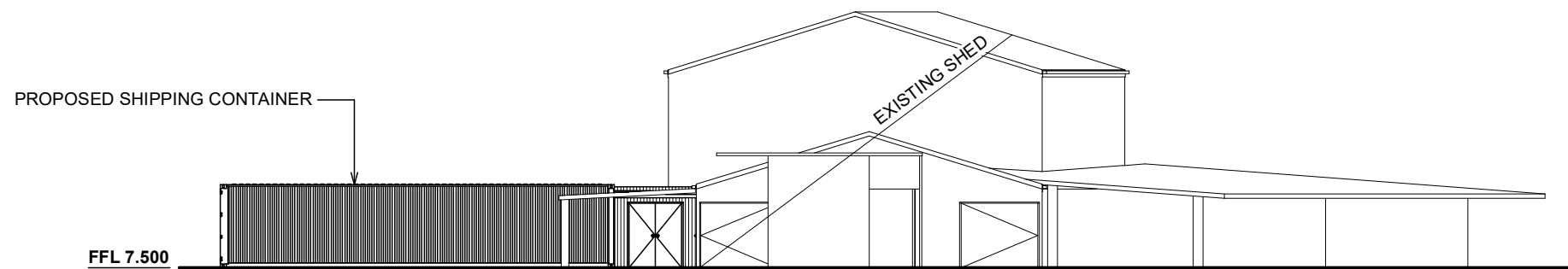
SINGLETON OFFICE
Ph: (02) 4961 5544

CONTACT DETAILS
General Enquiries:
reception@sorensendesign.com.au
www.sorensendesign.com.au

PROJECT: PROPOSED AMENITIES AT 8 EDWARDS STREET MORPETH
CLIENT: BOWE
TITLE: DETAILED SITE PLAN
FILE: _ DATE: 21/08/20 SHEET: 2 OF 8
THESE PLANS ARE SUBJECT TO COPYRIGHT



NORTH ELEVATION
1:200



WEST ELEVATION
1:200



B A	07/12/21 - REVISED ISSUE 28/08/20 - PRELIMINARY ISSUE
ISSUE	DETAILS

SORENSEN
DESIGN & PLANNING

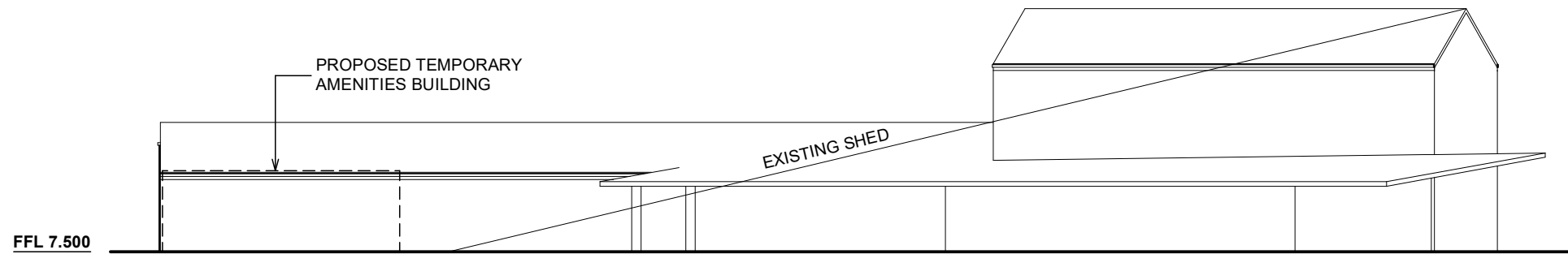
S PORT STEPHENS OFFICE
Ph: (02) 4984 9955
Suite 4/ 10 Yacaaba Street
Nelson Bay NSW 2315

NEWCASTLE OFFICE
Ph: (02) 4961 5544

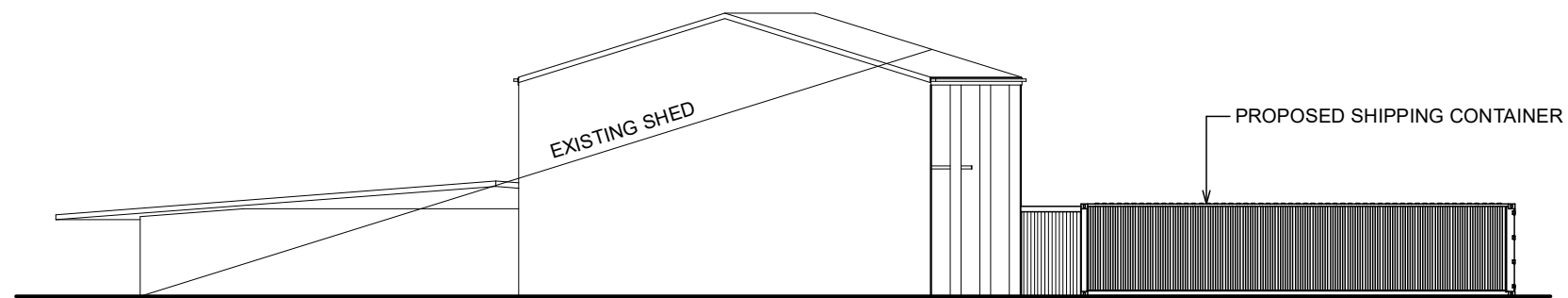
SINGLETON OFFICE
Ph: (02) 4961 5544

CONTACT DETAILS
General Enquiries:
reception@sorensendesign.com.au
www.sorensendesign.com.au

PROJECT: PROPOSED AMENITIES AT 8 EDWARDS STREET MORPETH	
CLIENT: BOWE	
TITLE: ELEVATIONS	
FILE: _	DATE: 21/08/20 SHEET: 4 OF 8
THESE PLANS ARE SUBJECT TO COPYRIGHT	



SOUTH ELEVATION
1:200



EAST ELEVATION
1:200



B	07/12/21 - REVISED ISSUE
A	28/08/20 - PRELIMINARY ISSUE
ISSUE	DETAILS

SORENSEN
DESIGN & PLANNING

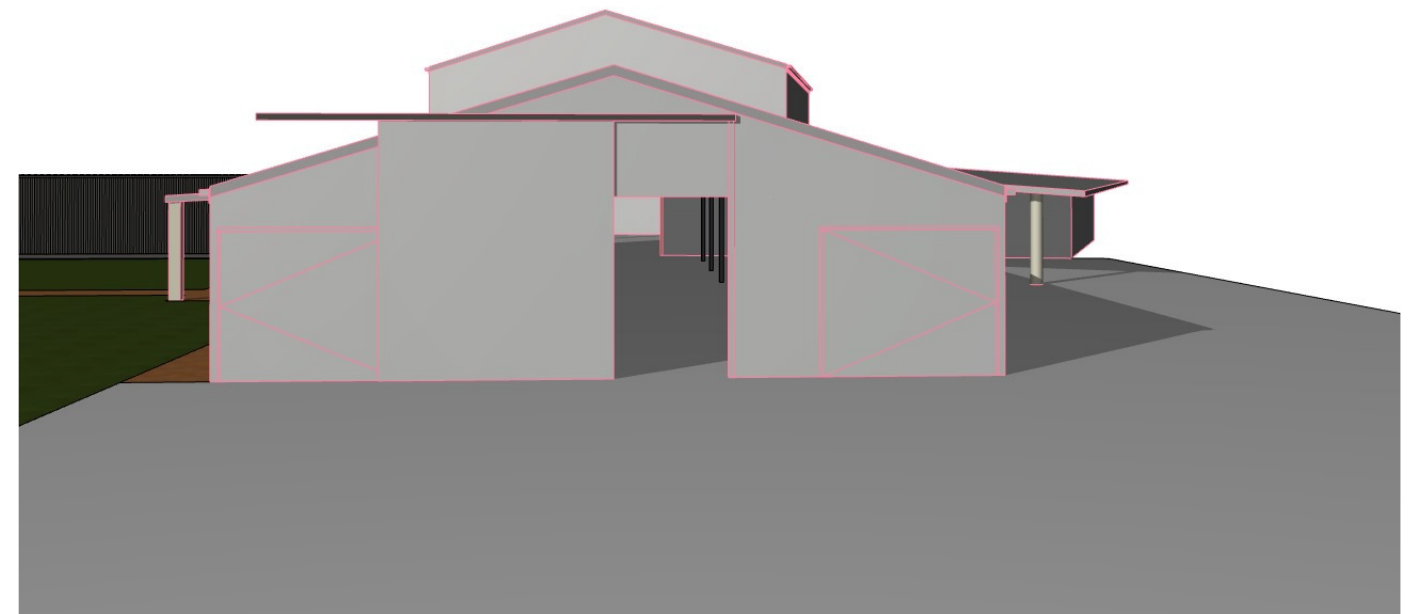
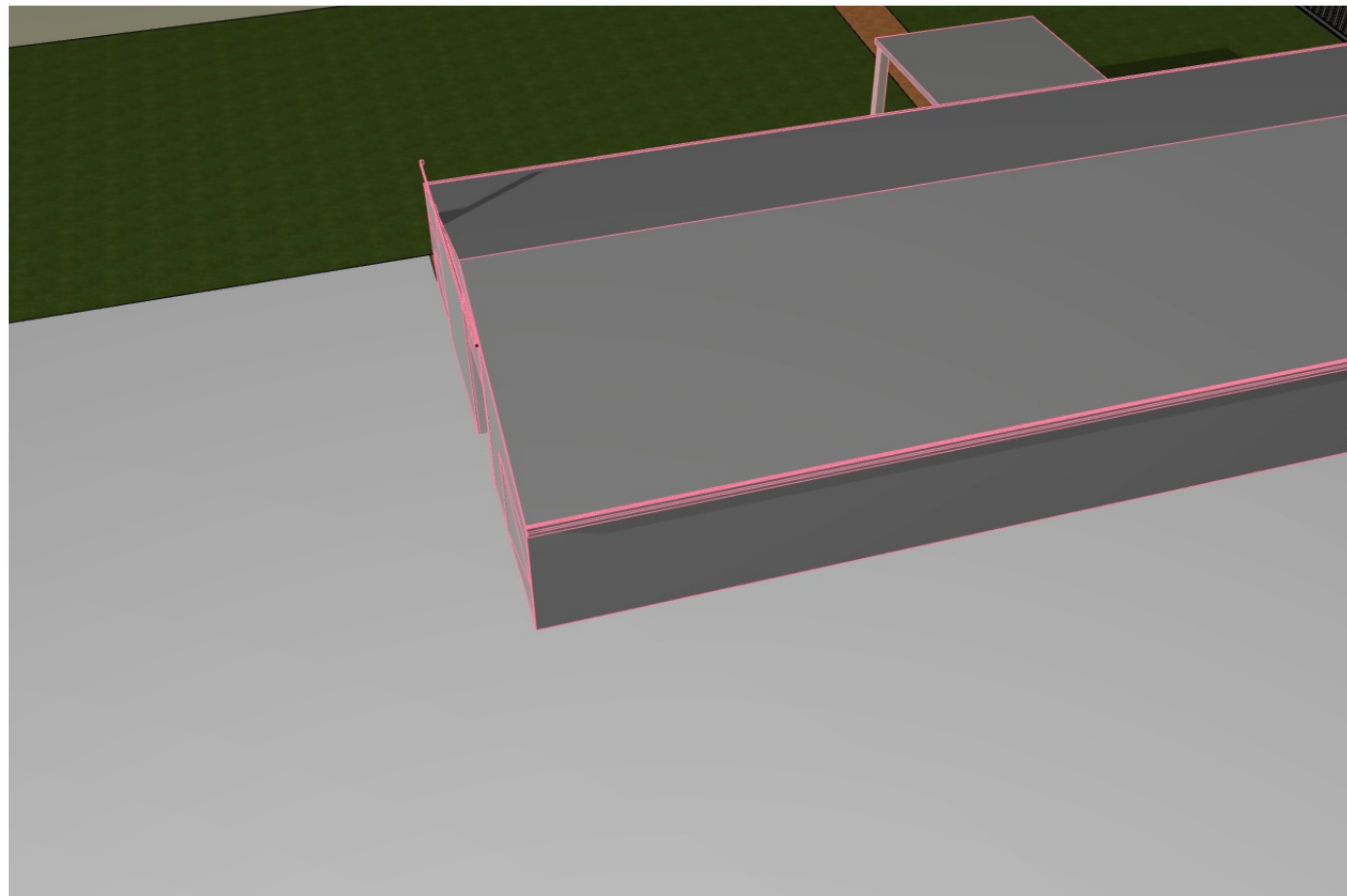
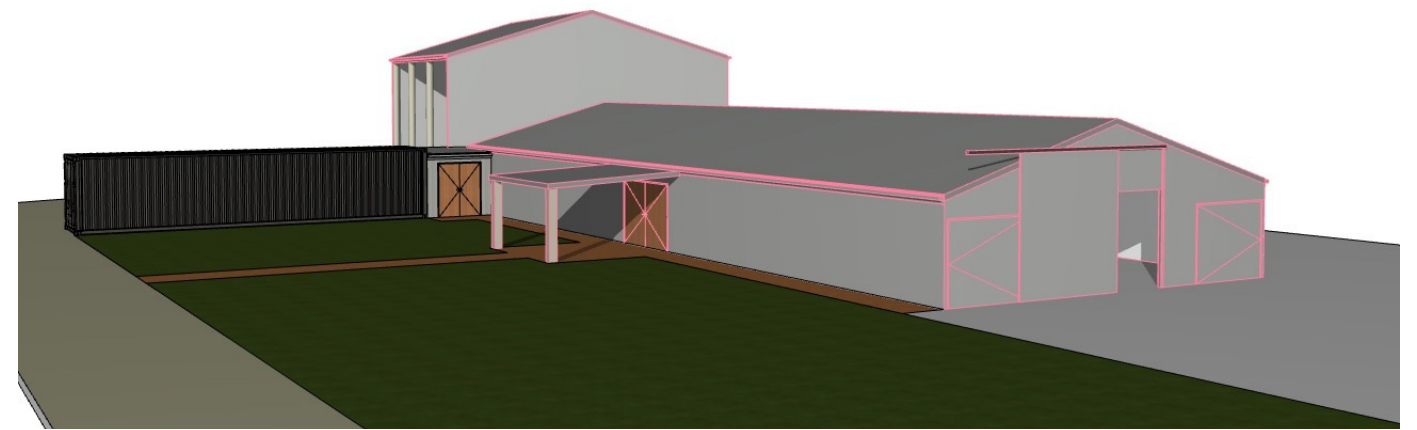
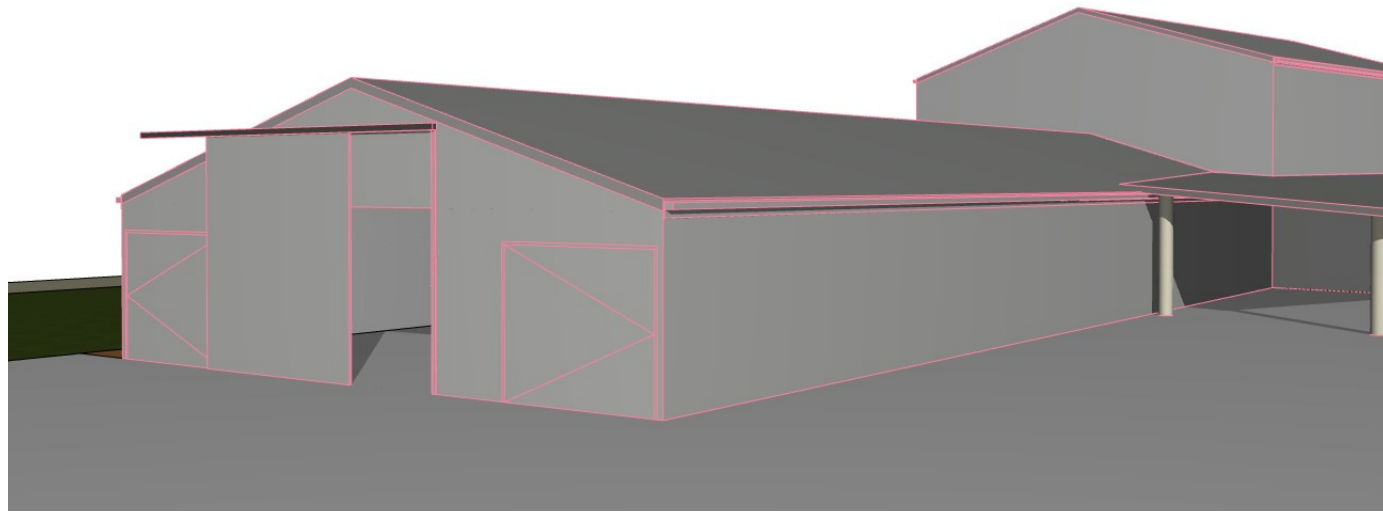
S PORT STEPHENS OFFICE
Ph: (02) 4984 9955
Suite 4/ 10 Yacaaba Street
Nelson Bay NSW 2315

NEWCASTLE OFFICE
Ph: (02) 4961 5544

SINGLETON OFFICE
Ph: (02) 4961 5544

CONTACT DETAILS
General Enquiries:
reception@sorensendesign.com.au
www.sorensendesign.com.au

PROJECT: PROPOSED AMENITIES AT 8 EDWARDS STREET MORPETH	
CLIENT: BOWE	
TITLE: ELEVATIONS	
FILE: _	DATE: 21/08/20 SHEET: 5 OF 8
THESE PLANS ARE SUBJECT TO COPYRIGHT	



B	07/12/21 - REVISED ISSUE
A	28/08/20 - PRELIMINARY ISSUE
ISSUE	DETAILS

SORENSEN
DESIGN & PLANNING

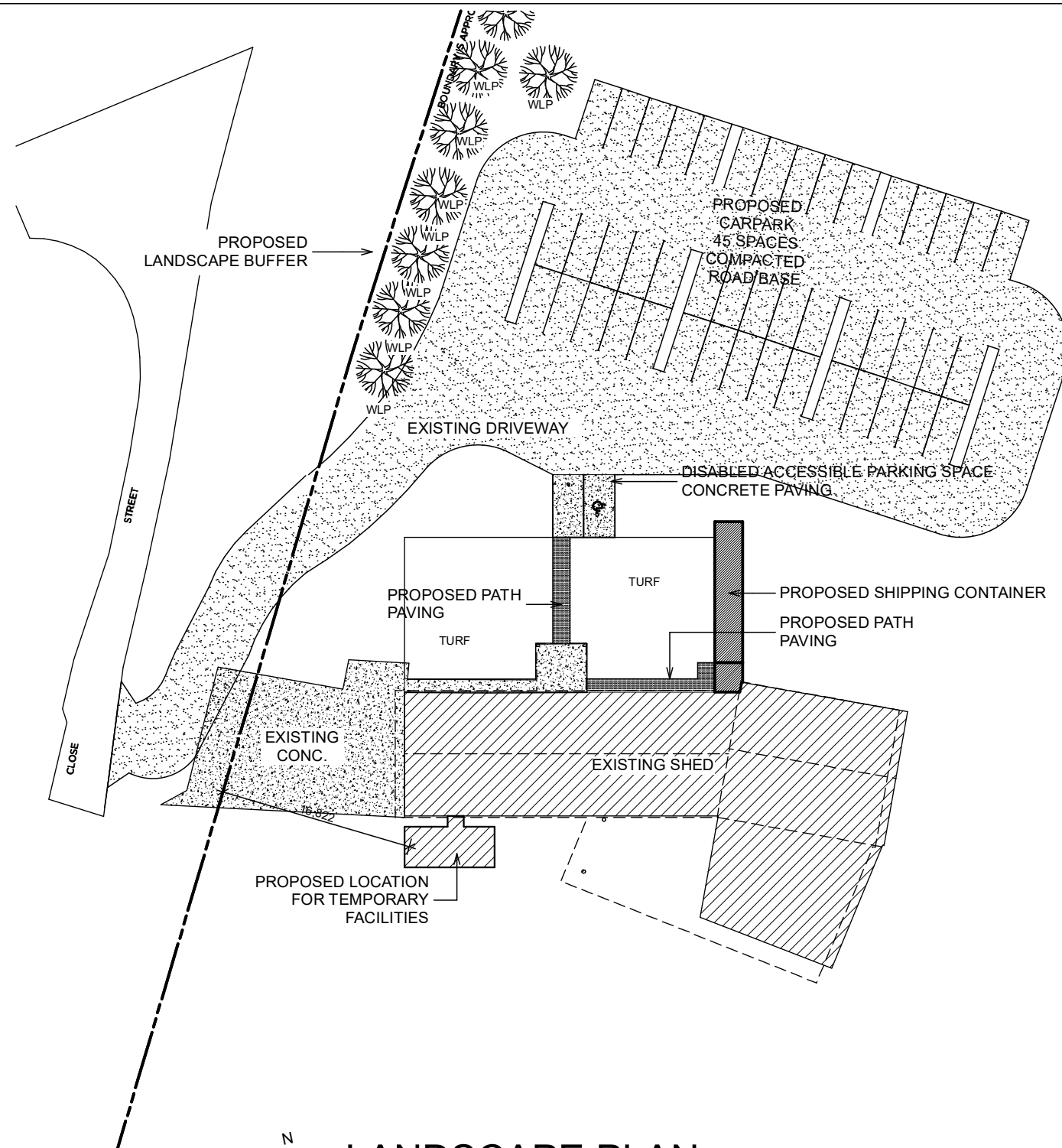
S PORT STEPHENS OFFICE
Ph: (02) 4984 9955
Suite 4/ 10 Yacaaba Street
Nelson Bay NSW 2315

NEWCASTLE OFFICE
Ph: (02) 4961 5544

SINGLETON OFFICE
Ph: (02) 4961 5544

CONTACT DETAILS
General Enquiries:
reception@sorensendesign.com.au
www.sorensendesign.com.au

PROJECT: PROPOSED AMENITIES AT 8 EDWARDS STREET MORPETH	
CLIENT: BOWE	
TITLE: 3D VIEWS	
FILE: _	DATE: 21/08/20 SHEET: 6 OF 8
THESE PLANS ARE SUBJECT TO COPYRIGHT	



N
LANDSCAPE PLAN
 1:500

ID	Botanical Name	Common Name	Pot Size	Height	Spread	Qty
WLP	Waterhousea Floribunda	Weeping Lilly Pilly	500mm	10.0-30.0m	5.0-10.0m	9



B	07/12/21 - REVISED ISSUE
A	28/08/20 - PRELIMINARY ISSUE
ISSUE	DETAILS



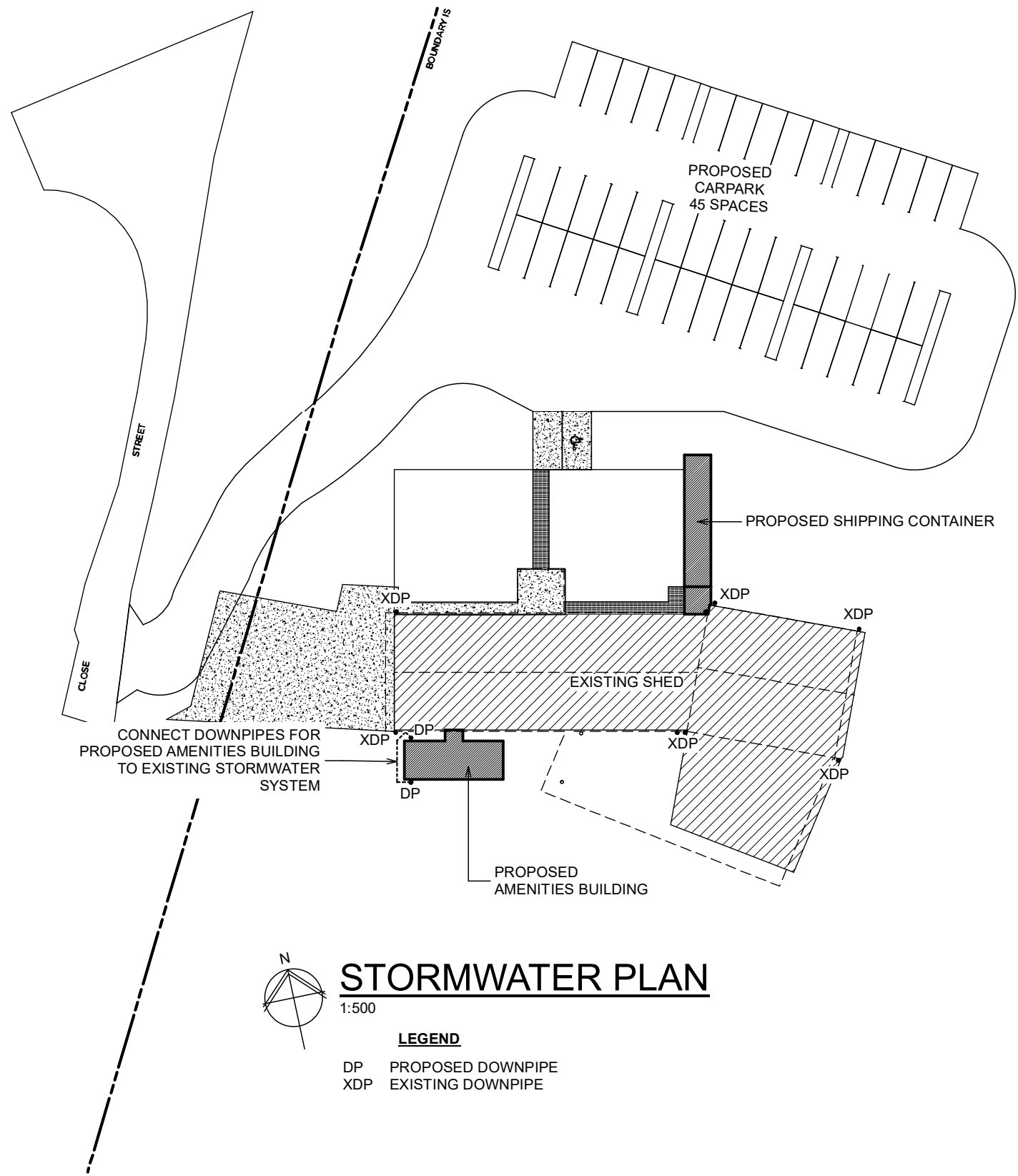
S PORT STEPHENS OFFICE
 Ph: (02) 4984 9955
 Suite 4/ 10 Yacaaba Street
 Nelson Bay NSW 2315

NEWCASTLE OFFICE
 Ph: (02) 4961 5544

SINGLETON OFFICE
 Ph: (02) 4961 5544

CONTACT DETAILS
 General Enquiries:
 reception@sorensendesign.com.au
 www.sorensendesign.com.au

PROJECT:	PROPOSED AMENITIES AT 8 EDWARDS STREET MORPETH
CLIENT:	BOWE
TITLE:	LANDSCAPE PLAN
FILE:	DATE: 21/08/20 SHEET: 7 OF 8
THESE PLANS ARE SUBJECT TO COPYRIGHT	



STORMWATER PLAN

1:500

LEGEND

- DP PROPOSED DOWNPIPE
- XDP EXISTING DOWNPIPE



B	07/12/21 - REVISED ISSUE
A	28/08/20 - PRELIMINARY ISSUE
ISSUE	DETAILS



S PORT STEPHENS OFFICE
Ph: (02) 4984 9955
Suite 4/ 10 Yacaaba Street
Nelson Bay NSW 2315

NEWCASTLE OFFICE
Ph: (02) 4961 5544
SINGLETON OFFICE
Ph: (02) 4961 5544

CONTACT DETAILS
General Enquiries:
reception@sorensendesign.com.au
www.sorensendesign.com.au

PROJECT: PROPOSED AMENITIES AT 8 EDWARDS STREET MORPETH		
CLIENT: BOWE		
TITLE: STORMWATER PLAN		
FILE: _	DATE: 21/08/20	SHEET: 8 OF 8
THESE PLANS ARE SUBJECT TO COPYRIGHT		