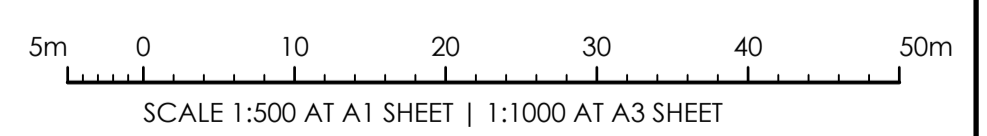


SYMBOL	DESCRIPTION
[Hatched Box]	ASPHALT PAVEMENT
[Dotted Box]	CONCRETE PATH. FINISH TO ARCHITECTS DETAIL
[Solid Line]	FINISHED SURFACE MAJOR CONTOURS (1.0m INTERVAL)
[Dashed Line]	FINISHED SURFACE MINOR CONTOURS (0.2m INTERVAL)
[Dotted Line]	EXISTING SURFACE CONTOURS (1.0m INTERVAL)
[Square with X]	GRATED INLET PIT (GIP) (U.N.O.)
[Square with +]	JUNCTION PIT (JP) (U.N.O.)
[Square with K]	KERB INLET PIT (KIP) (U.N.O.)
[Blue Line]	STORMWATER PIPE @ 1% MIN. U.N.O.
[Rectangular Box]	ECOSOL IN-LINE GPT 4300
[Double Line]	DISH DRAIN TO MAITLAND COUNCIL STANDARD DRAWINGS.
[Line with SA]	SA TYPE KERB AND GUTTER TO MAITLAND COUNCIL STANDARD DRAWINGS.
[Line with RK]	ROLL TOP KERB AND GUTTER TO MAITLAND COUNCIL STANDARD DRAWINGS.
[Line with RW]	RETAINING WALL DETAIL BY OTHERS
[Box with RL54.20]	NOMINAL FINISHED SURFACE LEVEL

**CONCEPT STORMWATER MANAGEMENT PLAN**  
SCALE 1:500 AT A1

**NOTE:**  
THIS IS A PLANNING DRAWING ONLY, FOR THE PURPOSE OF CONCEPTUAL DESIGN AND/OR PLANNING. FURTHER DETAILED ENGINEERING DESIGN INCLUDING SPECIFICATIONS, SIZING AND STORMWATER INVERTS TO BE PROVIDED PRIOR TO BUILDING RULES ASSESSMENT AND CONSTRUCTION.



ISSUE FOR DA AMENDMENTS  
22.12.21  
DATE  
A JG  
ISSUE BY  
**NOT FOR CONSTRUCTION**

**ARCHITECT**  
BN ARCHITECTURE  
82 ALEXANDER STREET  
CROWS NEST, NSW 2065

**CLIENT**  
REVELOP  
SUITE 506, LEVEL 5/55  
PHILLIP STREET  
PARRAMATTA NSW 2150

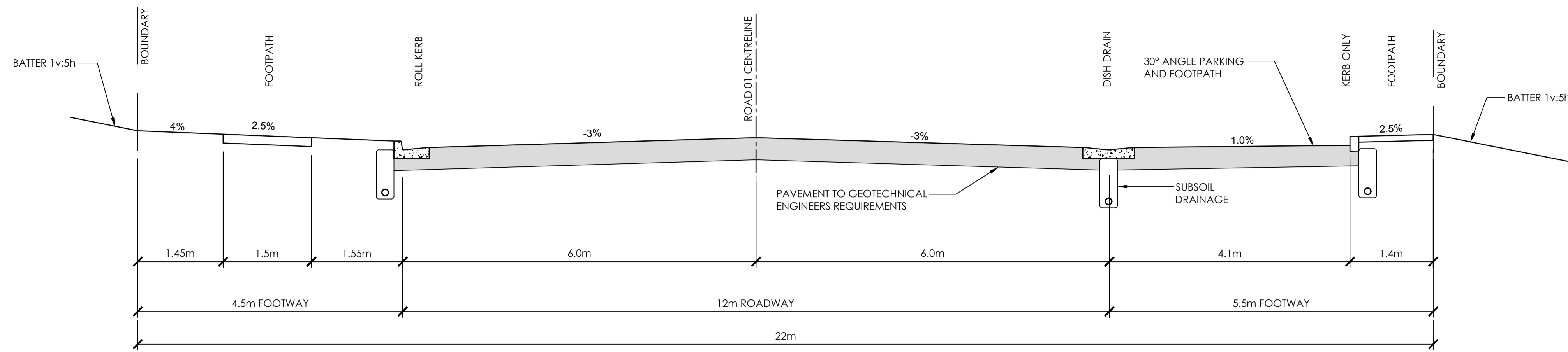
**PROJECT**  
PROPOSED SUBDIVISION  
HERITAGE DRIVE  
CHISHOLM NSW 2322

DESIGNED -- DRAWN -- DATE DEC 21 SIZE SIZE CAD REF TX15901.00 C01

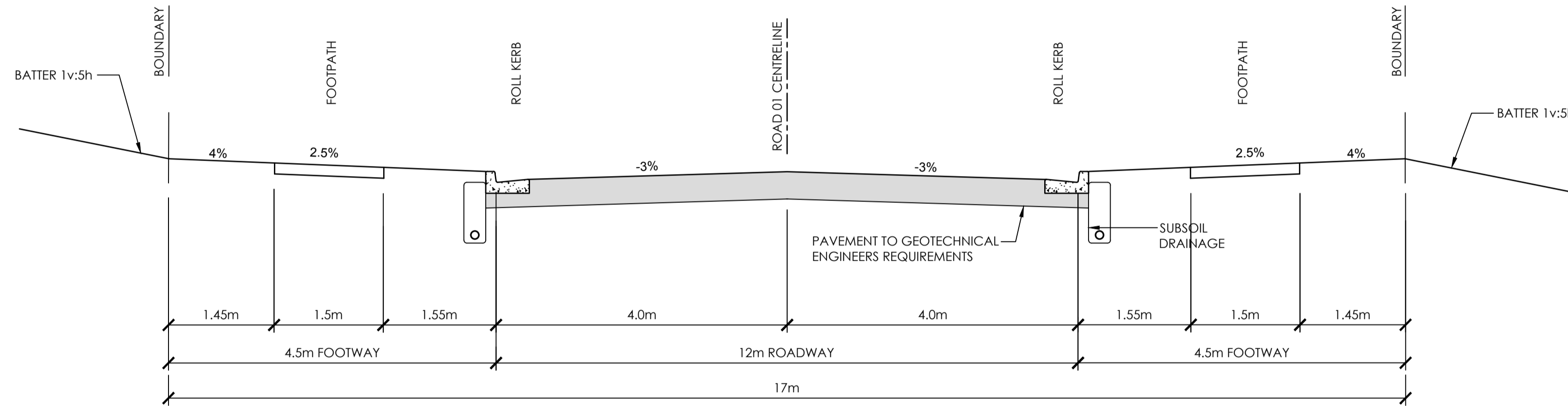
**TRIAXIAL CONSULTING**  
1300 874 294 | TRIAXIAL.COM.AU  
UNIT 5, 166 HANNELL STREET, MARYVILLE NSW 2293  
PO BOX 3197, TUGGERAH NSW 2259  
TO BE PRINTED IN COLOUR

**DRAWING TITLE**  
CONCEPT STORMWATER MANAGEMENT PLAN

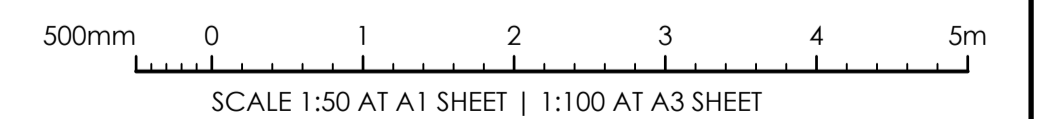
PROJECT No. TX15901.00 DRAWING No. C3.00 ISSUE A



TYPICAL SECTION - ROAD 01  
SCALE 1:50



TYPICAL SECTION - ROAD 02  
SCALE 1:50



ISSUE FOR DA AMENDMENTS	22.12.21	A	JG
	DATE	ISSUE	BY

NORTH POINT U.N.O.

ARCHITECT  
**BN ARCHITECTURE**  
82 ALEXANDER STREET  
CROWS NEST, NSW 2065

CLIENT  
**REVELOP**  
SUITE 506, LEVEL 5/55  
PHILLIP STREET  
PARRAMATTA NSW 2150

PROJECT  
**PROPOSED SUBDIVISION**  
HERITAGE DRIVE  
CHISHOLM NSW 2322

DESIGNED	DRAWN	DATE	SIZE	CAD REF
BK	CW	DEC 21	SIZE	TX15901.00 C01



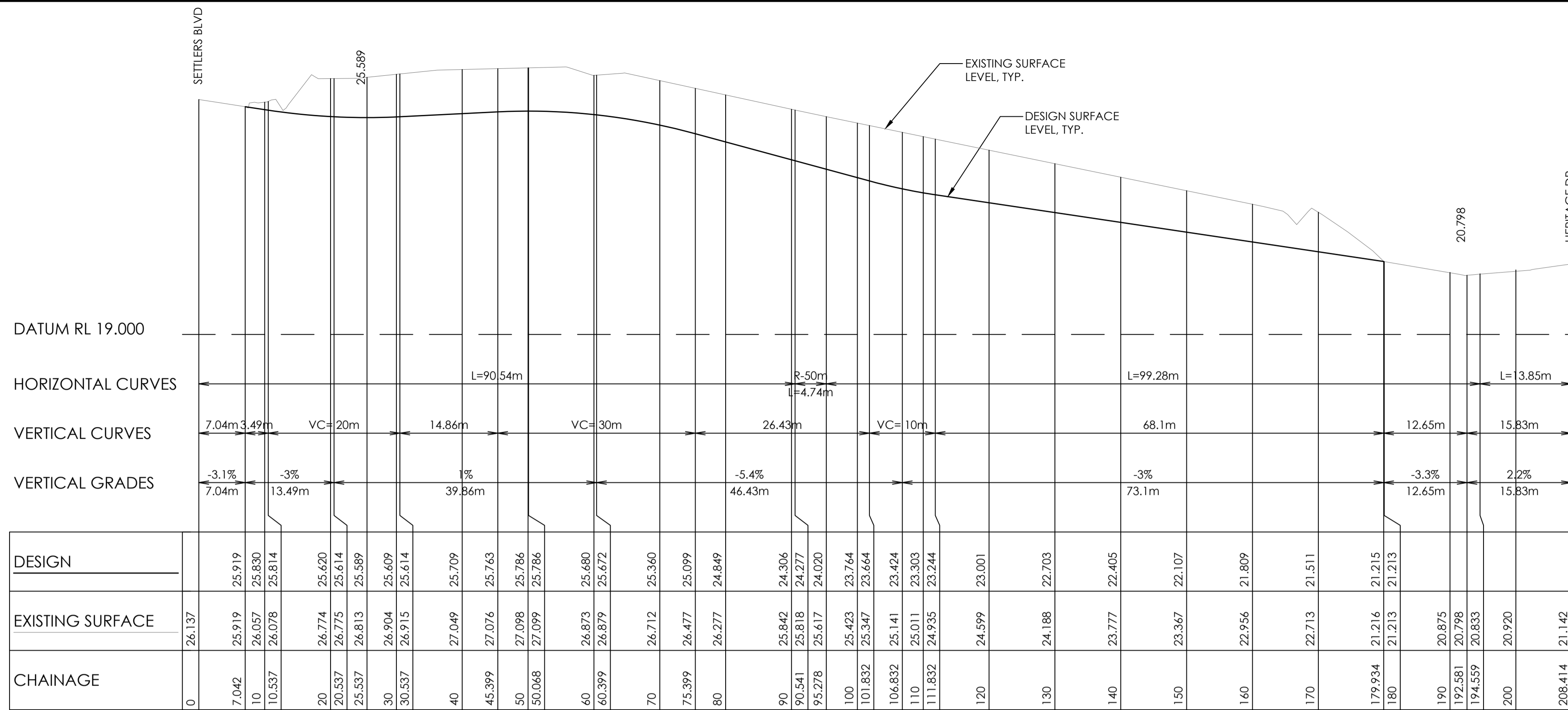
**TRIAxIAL**  
**CONSULTING**  
COMPLEX PROBLEMS  
RESOLVED SIMPLY

1300 874 294 | TRIAXIAL.COM.AU  
UNIT 5, 166 HANNELL STREET, MARYVILLE NSW 2293  
PO BOX 3197, TUGGERAH NSW 2259

TO BE PRINTED IN COLOUR

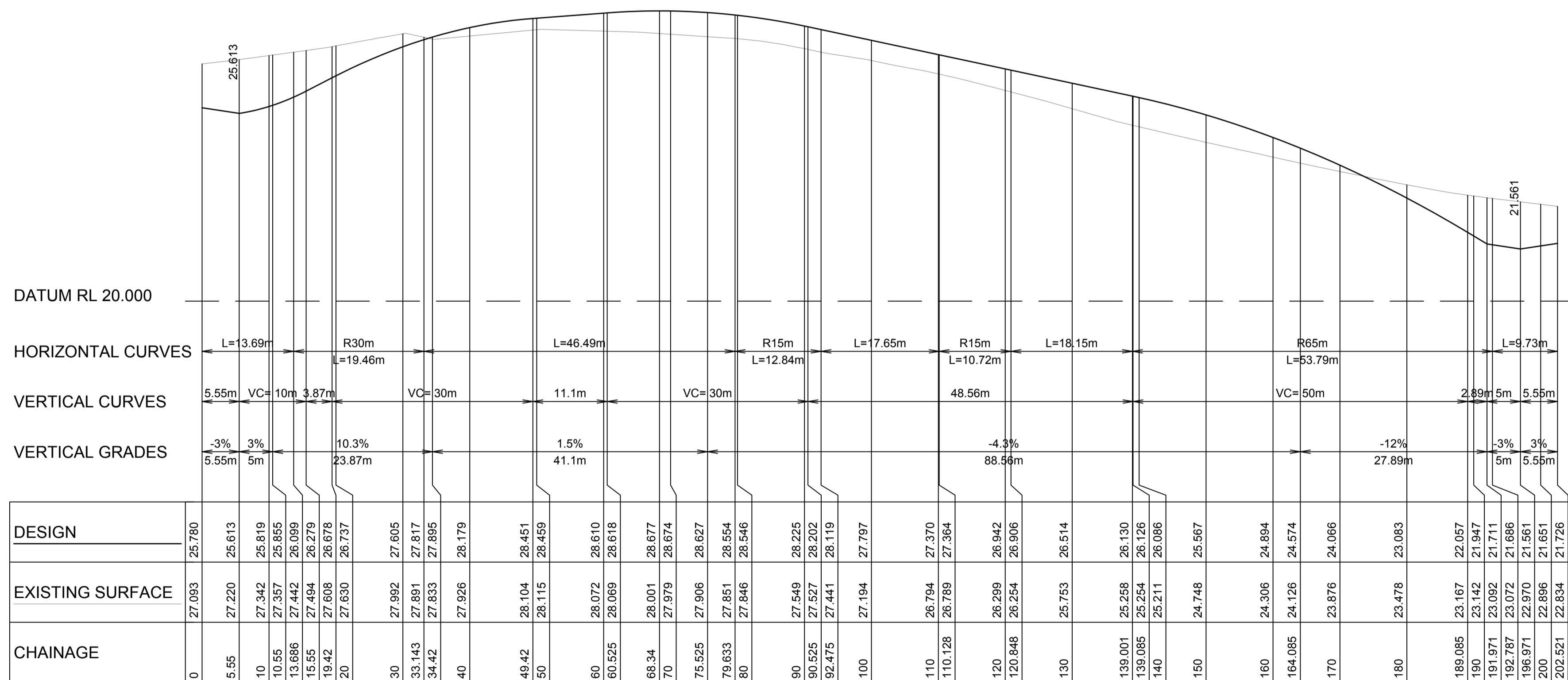
DRAWING TITLE  
**TYPICAL ROAD CROSS SECTIONS**

PROJECT No. **TX15901.00** DRAWING No. **C3.01** ISSUE **A**



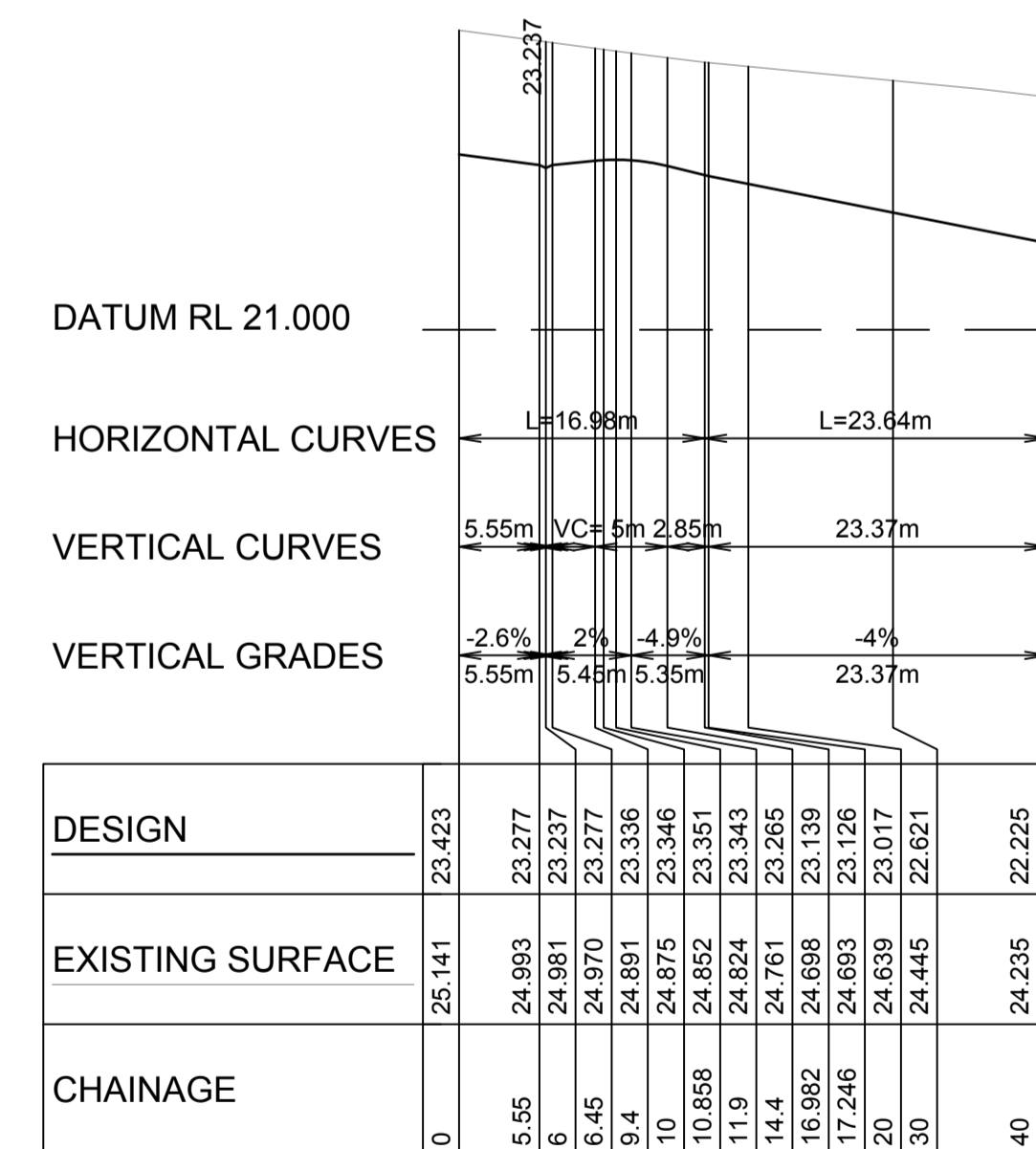
ROAD 01 CL - LONGITUDINAL SECTION

A1 HORZ SCALE 1:500  
A1 VERT SCALE 1:100



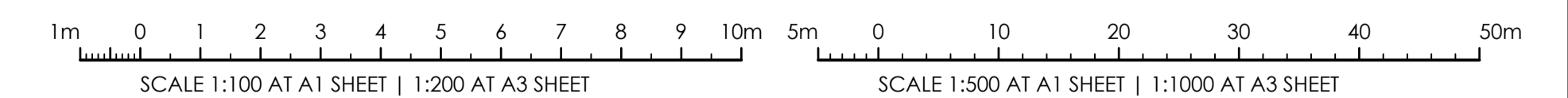
D ROAD 02 CL - LONGITUDINAL SECTION

A1 HORZ SCALE 1:500  
A1 VERT SCALE 1:100



D ACCESS 02 CL - LONGITUDINAL SECTION

A1 HORZ SCALE 1:500  
A1 VERT SCALE 1:100



ISSUE FOR DA AMENDMENTS	22.12.21	A	JG
	DATE	ISSUE	BY

NORTH POINT U.N.O.

ARCHITECT  
**BN ARCHITECTURE**  
82 ALEXANDER STREET  
CROWS NEST, NSW 2065

CLIENT  
**REVELOP**  
SUITE 506, LEVEL 5/55  
PHILLIP STREET  
PARRAMATTA NSW 2150

PROJECT  
**PROPOSED SUBDIVISION**  
HERITAGE DRIVE  
CHISHOLM NSW 2322

DESIGNED BK  
DRAWN CW  
DATE DEC 21  
SIZE  
CAD REF TX15901.00 C01



**TRIAxIAL**  
CONSULTING

COMPLEX PROBLEMS  
RESOLVED SIMPLY

1300 874 294 | TRIAXIAL.COM.AU  
UNIT 5, 166 HANNELL STREET, MARYVILLE NSW 2293  
PO BOX 3197, TUGGERAH NSW 2259

TO BE PRINTED IN COLOUR

DRAWING TITLE  
**CONCEPT ROAD AND DRIVEWAY  
ACCESS LONGITUDINAL  
SECTIONS**  
PROJECT No. TX15901.00  
DRAWING No. C3.02  
ISSUE A



LEGEND	
SYMBOL	DESCRIPTION
	EASTERN PRE-DEVELOPMENT CATCHMENT BOUNDARY
	WESTERN PRE-DEVELOPMENT CATCHMENT BOUNDARY. DRAINS TO EXISTING DETENTION BASIN TO THE NORTH WEST.

CATCHMENT	AREA (ha)	IMPERVIOUS (%)	PERVIOUS (%)	10% AEP PEAK FLOW (m³/s)	1% AEP PEAK FLOW (m³/s)
WEST CATPRE	1.3883	60	40	0.432	0.774
EAST CATPRE	0.3082	60	40	0.096	0.172

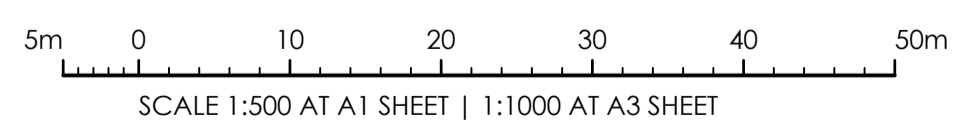
NOTE: R1 GENERAL RESIDENTIAL 60% PAVED IN ACCORDANCE WITH MCC MANUAL OF ENGINEERING STANDARDS

FUTURE PLAZA. REFER PLAN BY TRIAXIAL CONSULTANTS UNDER SEPARATE COVER

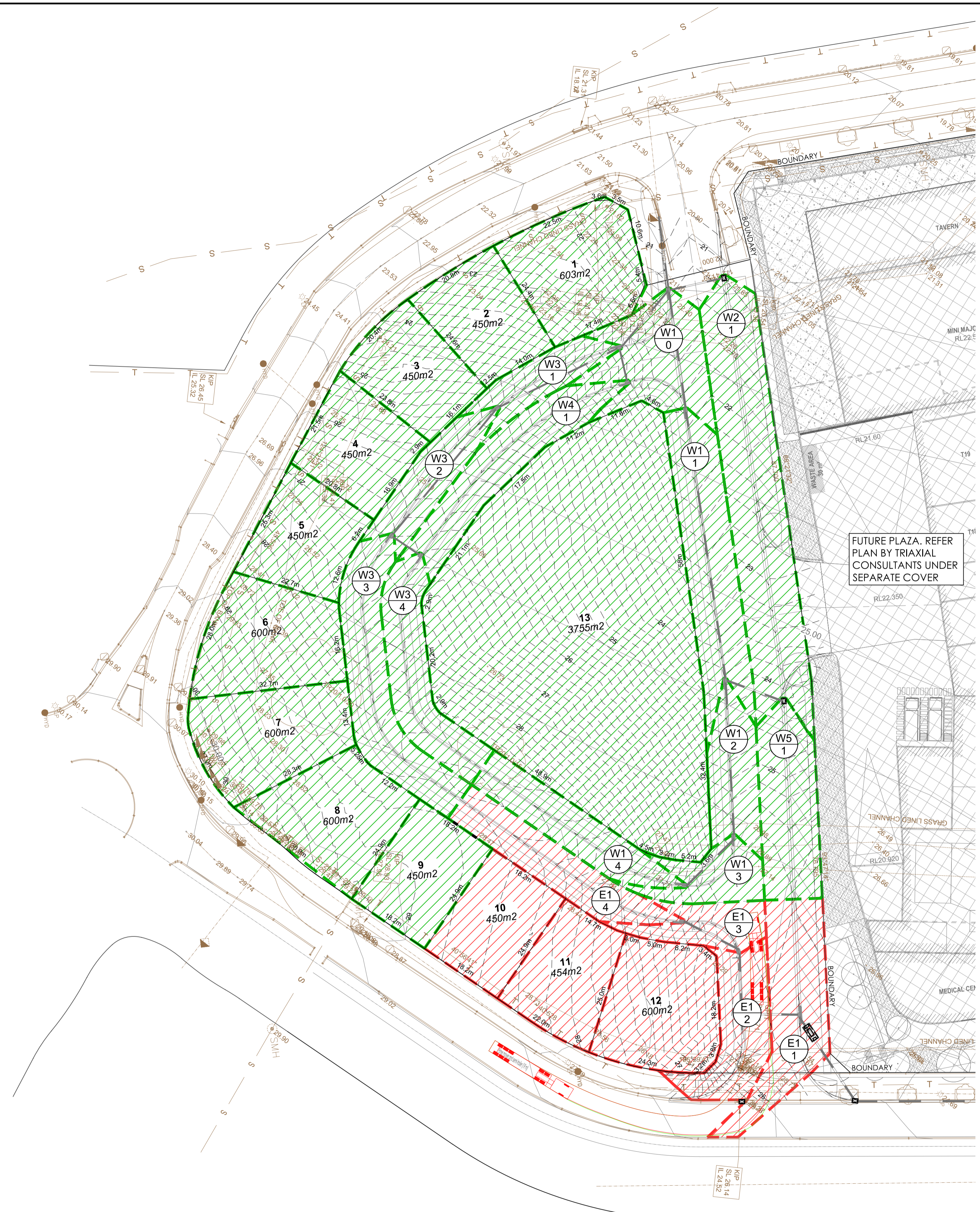
PRE-DEVELOPMENT WESTERN CATCHMENT

PRE-DEVELOPMENT EASTERN CATCHMENT

PRE-DEVELOPMENT CATCHMENT PLAN  
SCALE 1:500 AT A1



ISSUE FOR DA AMENDMENTS	22.12.21	A	JG		<b>ARCHITECT</b> <b>BN ARCHITECTURE</b> 82 ALEXANDER STREET CROWS NEST, NSW 2065	<b>CLIENT</b> <b>REVELOP</b> SUITE 506, LEVEL 5/55 PHILLIP STREET PARRAMATTA NSW 2150	<b>PROJECT</b> <b>PROPOSED SUBDIVISION</b> HERITAGE DRIVE CHISHOLM NSW 2322		<b>TRIAXIAL CONSULTING</b> 1300 874 294   TRIAXIAL.COM.AU UNIT 5, 166 HANNELL STREET, MARYVILLE NSW 2293 PO BOX 3197, TUGGERAH NSW 2259 <b>TO BE PRINTED IN COLOUR</b>	<b>DRAWING TITLE</b> <b>PRE DEVELOPMENT STORMWATER CATCHMENT PLAN</b>  <b>PROJECT No.</b> TX15901.00 <b>DRAWING No.</b> C3.03 <b>ISSUE</b> A
	DATE	ISSUE	BY							



SYMBOL	DESCRIPTION
	EASTERN POST-DEVELOPMENT CATCHMENT BOUNDARY
	WESTERN PRE-DEVELOPMENT CATCHMENT BOUNDARY DRAINS TO EXISTING DETENTION BASIN TO THE NORTH WEST.

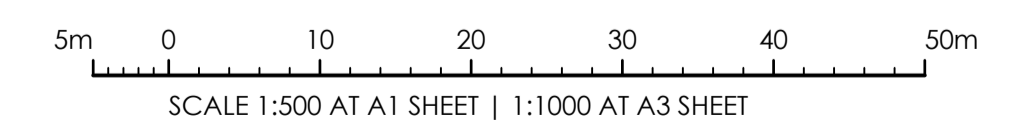
FUTURE PLAZA. REFER PLAN BY TRIAXIAL CONSULTANTS UNDER SEPARATE COVER

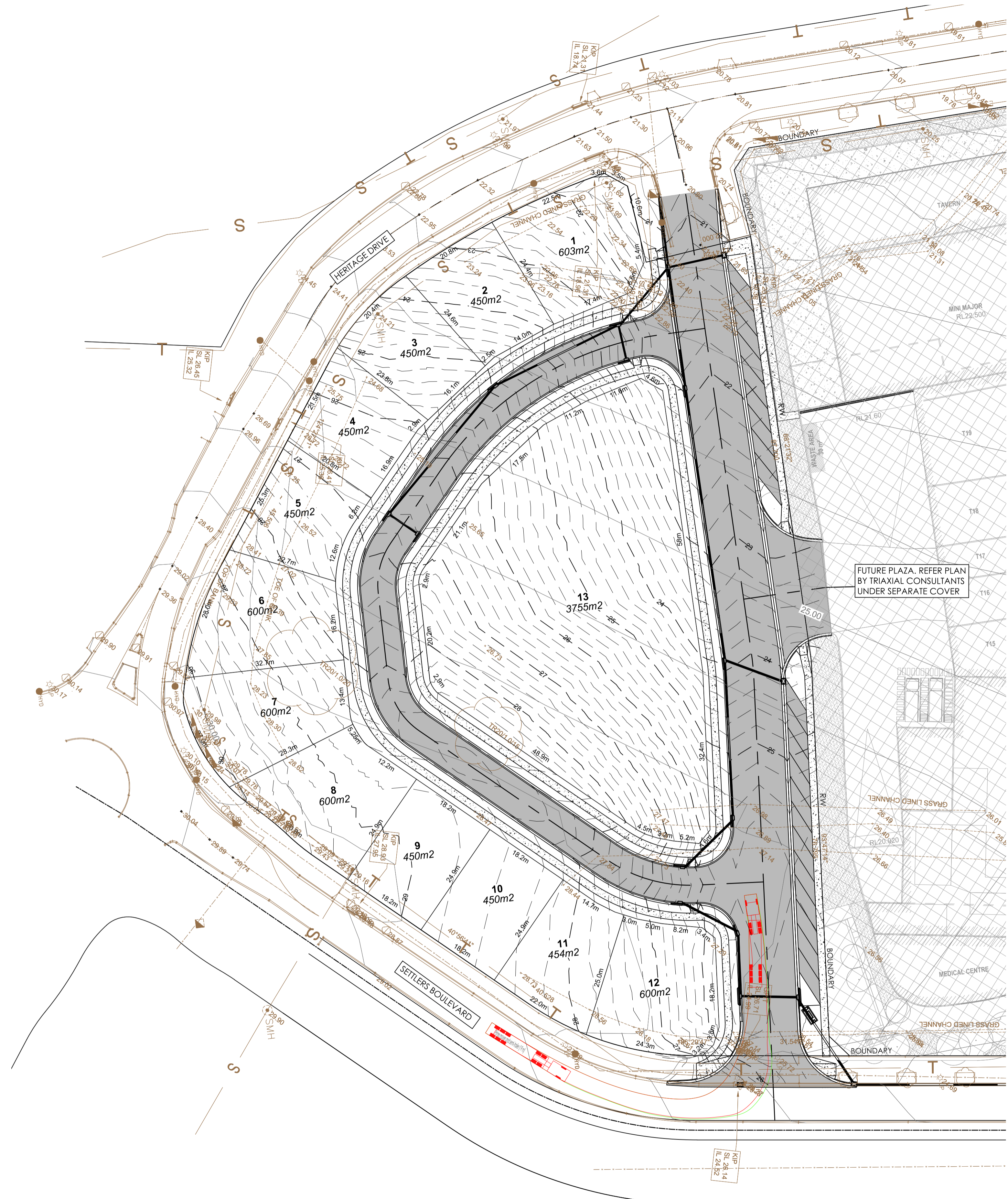
LOT	ALLOTMENT PERMISSIBLE SITE DISCHARGE		
	EASTERN CATCHMENT		
	AREA (m <sup>2</sup> )	10% AEP PSD (L/S)	1% AEP PSD (L/S)
10	450	10.8	19.1
11	454	10.9	19.3
12	600	14.4	25.5
TOTAL	1504	36	64

EASTERN CATCHMENT WATER QUALITY MODELLING RESULTS		
POLLUTANT	TARGET	DESIGN REDUCTION
GP	70%	100%
TSS	80%	84.3%
TN	45%	52.4%
TP	45%	77.3%

CATCHMENT	AREA (ha)	IMPERVIOUS (%)	PERVIOUS (%)	10% AEP PEAK FLOW (m <sup>3</sup> /s)	1% AEP PEAK FLOW (m <sup>3</sup> /s)
WEST CATPRE	1.3883	60	40	0.432	0.774
EAST CATPRE	0.3082	60	40	0.096	0.172
CATE1/4	0.0392	75	25	0.015	0.027
CATE1/3	0.0213	75	25	0.010	0.016
CATE1/2	0.0365	75	25	0.015	0.027
CATE1/1	0.0522	90	10	0.023	0.040
CATW2/1	0.1057	90	10	0.046	0.077
CATW1/0	0.0465	80	20	0.019	0.034
CATW4/1	0.0453	70	30	0.016	0.029
CATW3/1	0.0229	70	30	0.009	0.016
CATW1/4	0.0365	70	30	0.014	0.025
CATW1/3	0.0224	70	30	0.009	0.016
CATW1/2	0.0295	70	30	0.011	0.021
CATW1/1	0.0627	70	30	0.023	0.040
CATW5/1	0.0452	100	0	0.021	0.035
CATW3/4	0.0422	70	30	0.015	0.027
CATW3/3	0.0549	70	30	0.020	0.036
CATW3/2	0.0282	70	30	0.011	0.020

POST DEVELOPMENT CATCHMENT PLAN  
SCALE 1:500 AT A1



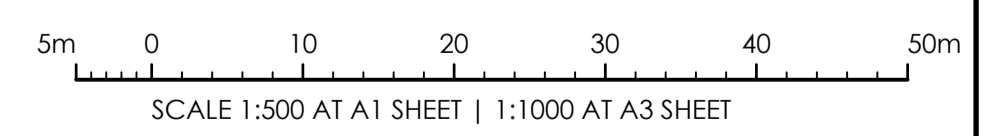


SYMBOL	DESCRIPTION
	ASPHALT PAVEMENT
	CONCRETE PATH, FINISH TO ARCHITECTS DETAIL
	FINISHED SURFACE MAJOR CONTOURS (1.0m INTERVAL)
	FINISHED SURFACE MINOR CONTOURS (0.2m INTERVAL)
	EXISTING SURFACE CONTOURS (1.0m INTERVAL)
	RETAINING WALL DETAIL BY OTHERS
	NOMINAL FINISHED SURFACE LEVEL

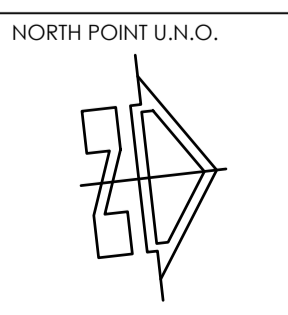
FUTURE PLAZA. REFER PLAN BY TRIAXIAL CONSULTANTS UNDER SEPARATE COVER

**CONCEPT BULK EARTHWORKS PLAN**  
SCALE 1:500 AT A1

**NOTE:**  
THIS IS A PLANNING DRAWING ONLY, FOR THE PURPOSE OF CONCEPTUAL DESIGN AND/OR PLANNING. FURTHER DETAILED ENGINEERING DESIGN INCLUDING SPECIFICATIONS, SIZING AND STORMWATER INVERTS TO BE PROVIDED PRIOR TO BUILDING RULES ASSESSMENT AND CONSTRUCTION.



ISSUE FOR DA AMENDMENTS  
22.12.21  
A JG  
DATE ISSUE BY  
**NOT FOR CONSTRUCTION**



ARCHITECT  
**BN ARCHITECTURE**  
82 ALEXANDER STREET  
CROWS NEST, NSW 2065

CLIENT  
**REVELOP**  
SUITE 506, LEVEL 5/55  
PHILLIP STREET  
PARRAMATTA NSW 2150

PROJECT  
**PROPOSED SUBDIVISION**  
HERITAGE DRIVE  
CHISHOLM NSW 2322

DESIGNED -- DRAWN -- DATE DEC 21 SIZE SIZE CAD REF TX15901.00 C01

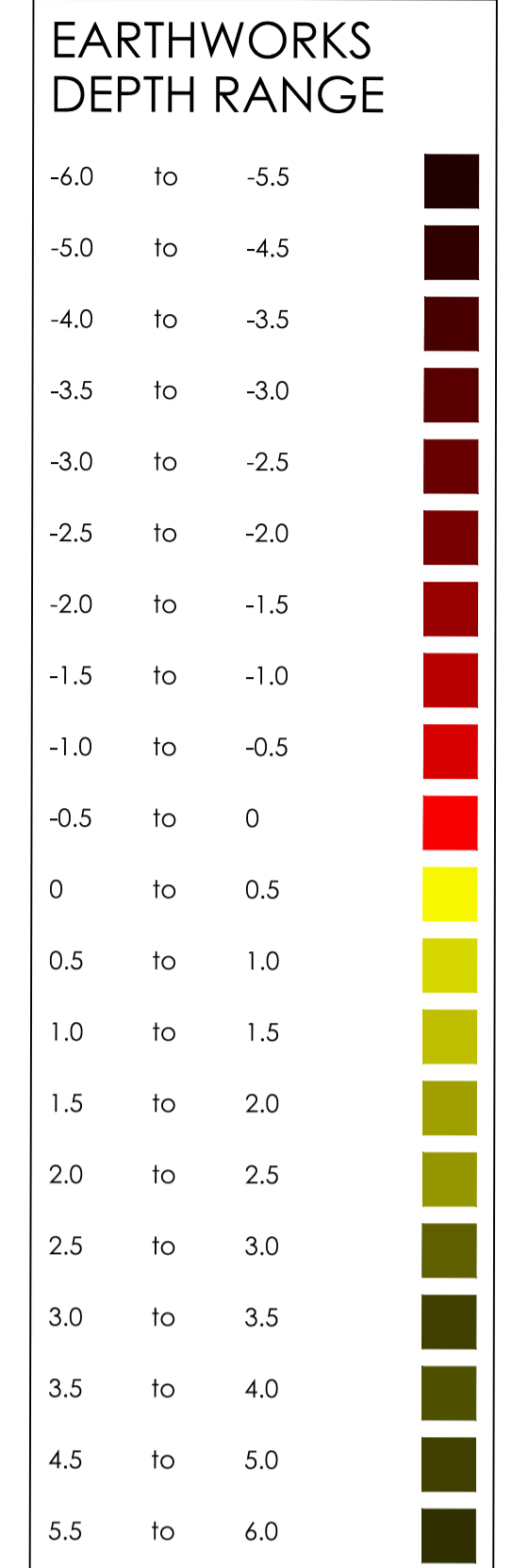
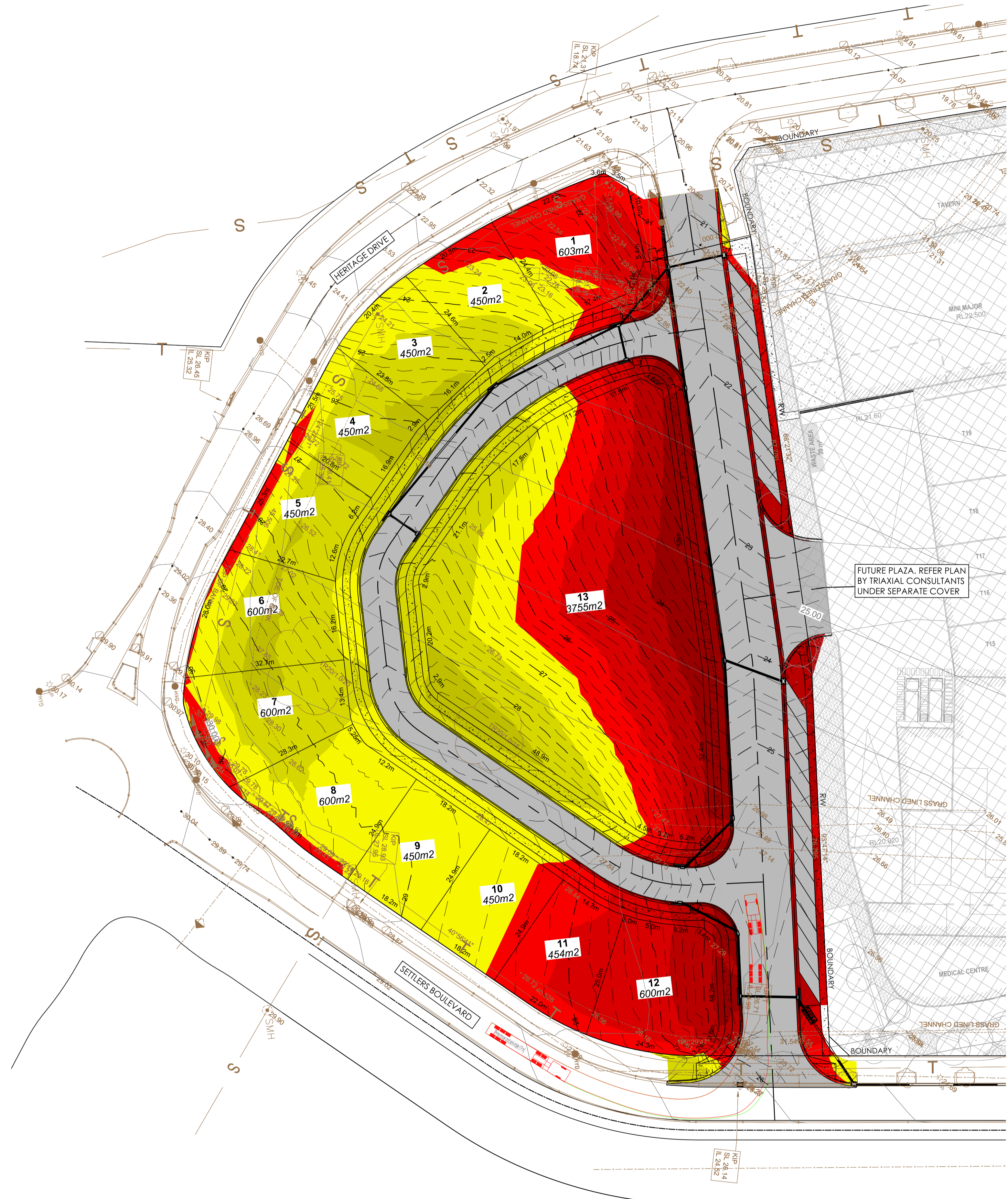


**TRIAxIAL CONSULTING**  
COMPLEX PROBLEMS  
RESOLVED SIMPLY

1300 874 294 | TRIAXIAL.COM.AU  
UNIT 5, 166 HANNELL STREET, MARYVILLE NSW 2293  
PO BOX 3197, TUGGERAH NSW 2259  
**TO BE PRINTED IN COLOUR**

DRAWING TITLE  
**CONCEPT BULK EARTHWORKS PLAN**

PROJECT No. **TX15901.00** DRAWING No. **C4.00** ISSUE **A**



**BULK EARTHWORKS NOTES**

1. THE CONCEPTUAL BULK EARTHWORK LEVELS SHOWN ARE NOMINAL FINISHED SURFACE LEVEL. FINAL DETAIL TO BE CONFIRMED AT CC STAGE.
2. RETAINING WALL DETAILS AND LEVELS TO BE STRUCTURALLY DESIGNED AND CONFIRMED AT CC STAGE.
3. SITE CONDITIONS, COMPACTION REQUIREMENTS, TEMPORARY BATTERS AND FILLING TO BE IN ACCORDANCE WITH GEOTECHNICAL ENGINEERS REQUIREMENTS.

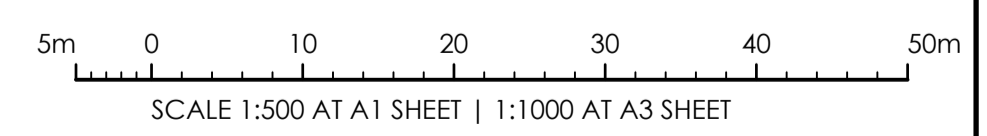
**CONCEPTUAL EARTHWORKS VOLUMES**

STRIP AREA OF WORKS AND STOCKPILE FOR RE-USE IN ACCORDANCE WITH GEOTECH ENGINEERS RECOMMENDATIONS.

CONCEPTUAL BULKEARTHWORKS VOLUMES (m³)

TOTAL SITE CUT VOLUME	= 8,646m³ NOM.
TOTAL SITE FILL VOLUME	= 4,234m³ NOM.

**NOTE:**  
THIS IS A PLANNING DRAWING ONLY, FOR THE PURPOSE OF CONCEPTUAL DESIGN AND/OR PLANNING. FURTHER DETAILED ENGINEERING DESIGN INCLUDING SPECIFICATIONS, SIZING AND STORMWATER INVERTS TO BE PROVIDED PRIOR TO BUILDING RULES ASSESSMENT AND CONSTRUCTION.



**CONCEPT BULK EARTHWORKS PLAN**  
SCALE 1:500 AT A1